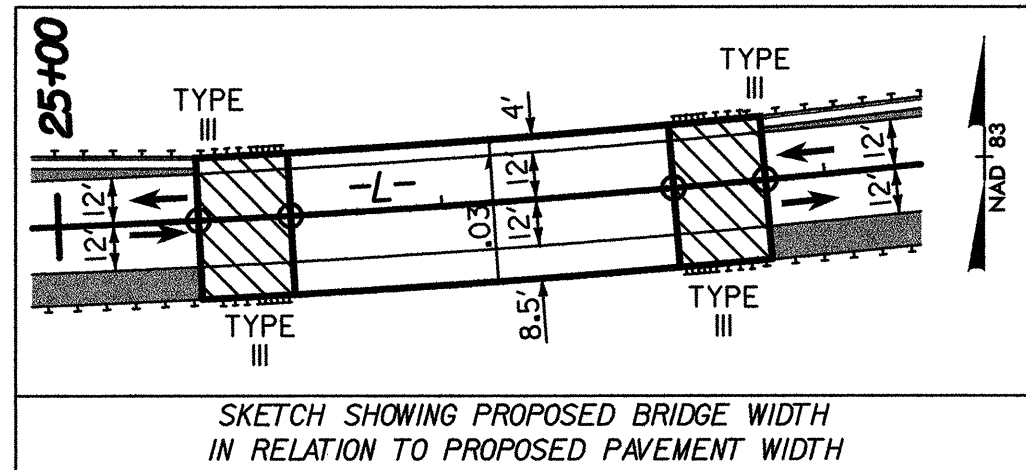


**DATUM DESCRIPTION**

THE LOCALIZED COORDINATE SYSTEM DEVELOPED FOR THIS PROJECT IS BASED ON THE STATE PLANE COORDINATES ESTABLISHED BY NCDOT FOR MONUMENT "B3522-1" WITH NAD 83 STATE PLANE GRID COORDINATES OF NORTHING: 737849.856(FI) EASTING: 2181704.118(FI) THE AVERAGE COMBINED GRID FACTOR USED ON THIS PROJECT (GROUND TO GRID) IS: 0.99990580 THE N.C. LAMBERT GRID BEARING AND LOCALIZED HORIZONTAL GROUND DISTANCE FROM "B3522-1" TO -L- STATION 19+00.00 IS S 87° 30' 06.6" W 412.97' ALL LINEAR DIMENSIONS ARE LOCALIZED HORIZONTAL DISTANCES VERTICAL DATUM USED IS NGVD 29



**-L-**  
 PI Sta 26+09.52  
 D = 17'11" 33.9" (LT)  
 L = 0'38" 13.3"  
 T = 529.10'  
 R = 3,500.00'  
 Sa = 0.03  
 D.S. = 50 mph

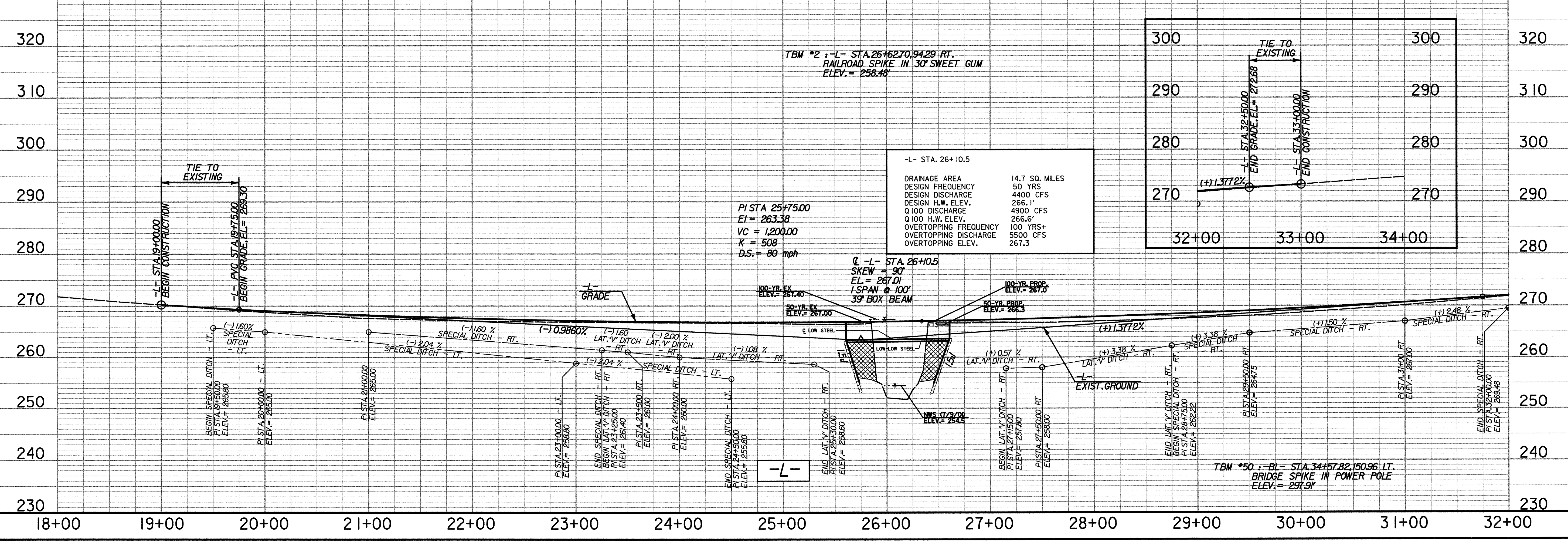
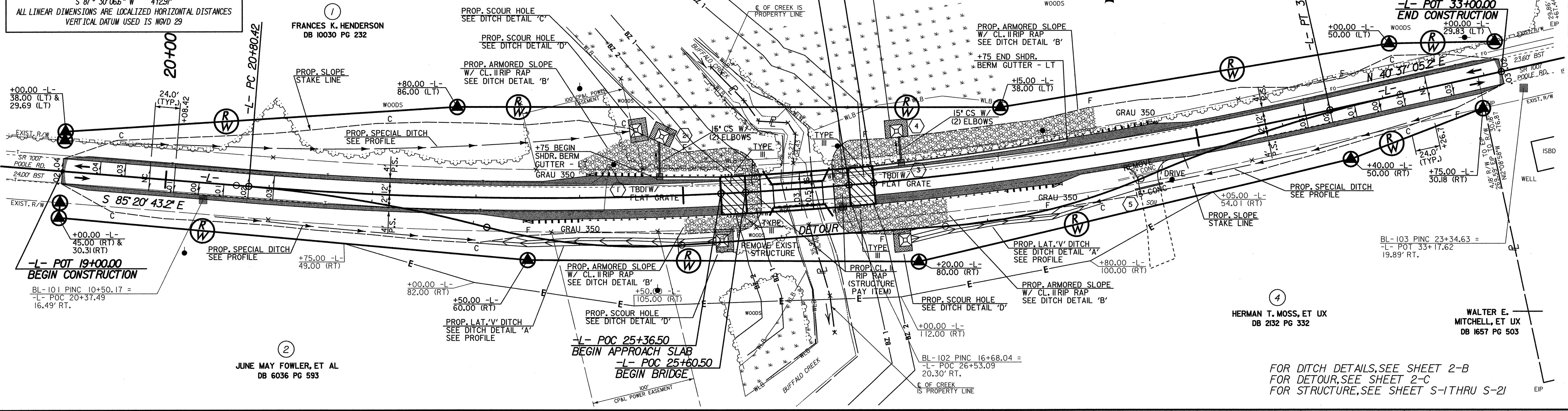


PROJECT REFERENCE NO. B-3522 SHEET NO. 4

HYDRAULICS ENGINEER: NORTH CAROLINA PROFESSIONAL SEAL 25306

HIGHWAY DESIGN ENGINEER: NORTH CAROLINA PROFESSIONAL SEAL 11119/04

REVISIONS



11/19/2004  
 P:\030335\_AW  
 P:\030335\_AW\B3522-101\_S104.DGN