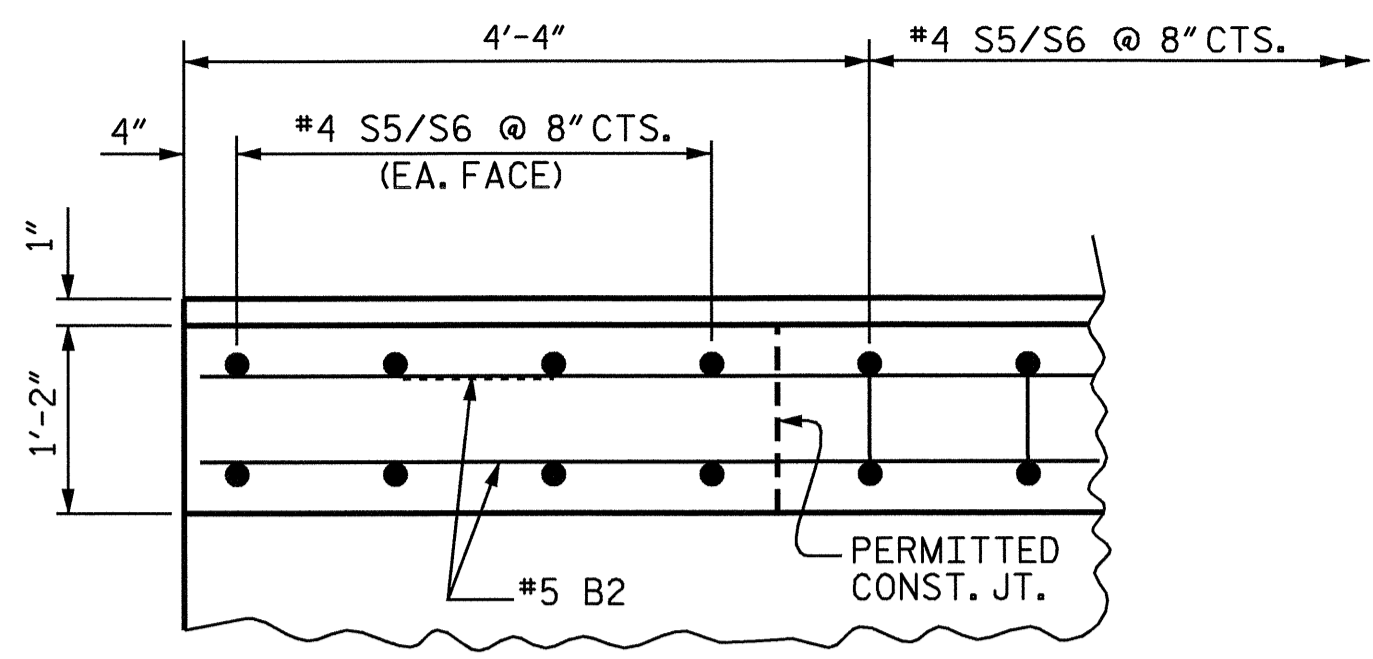


BILL OF MATERIAL

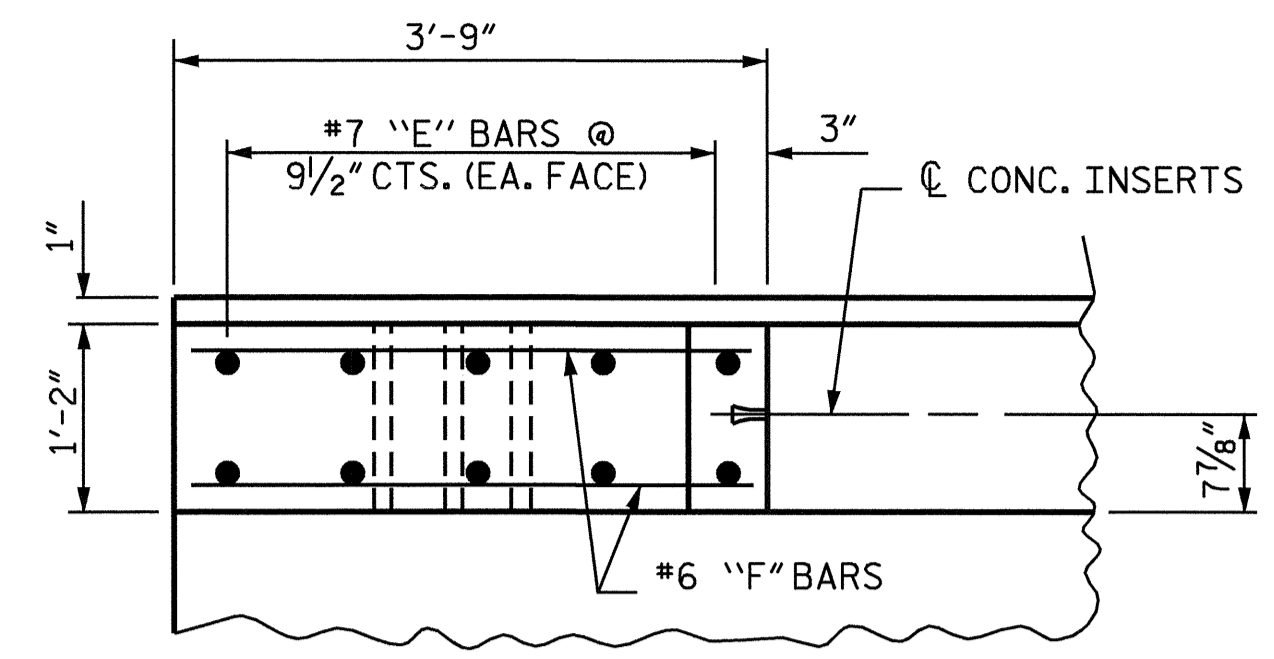
CONCRETE PARAPET & END POSTS

BAR	NO.	SIZE	TYPE	LENGTH	WEIGHT
*B2	64	5	STR	24'-0"	1608
*E1	4	7	STR	2'-11"	24
*E2	4	7	STR	3'-5"	28
*E3	4	7	STR	3'-10"	31
*E4	4	7	STR	4'-4"	35
*E5	4	7	STR	4'-8"	38
*E6	4	7	STR	3'-3"	27
*E7	4	7	STR	3'-9"	31
*E8	4	7	STR	4'-3"	35
*E9	4	7	STR	4'-9"	39
*E10	4	7	STR	5'-1"	42
*F1	4	6	STR	1'-10"	11
*F2	4	6	STR	3'-0"	18
*F3	4	6	STR	3'-4"	20
*F4	4	6	STR	1'-10"	11
*F5	4	6	STR	3'-0"	18
*F6	4	6	STR	3'-4"	20

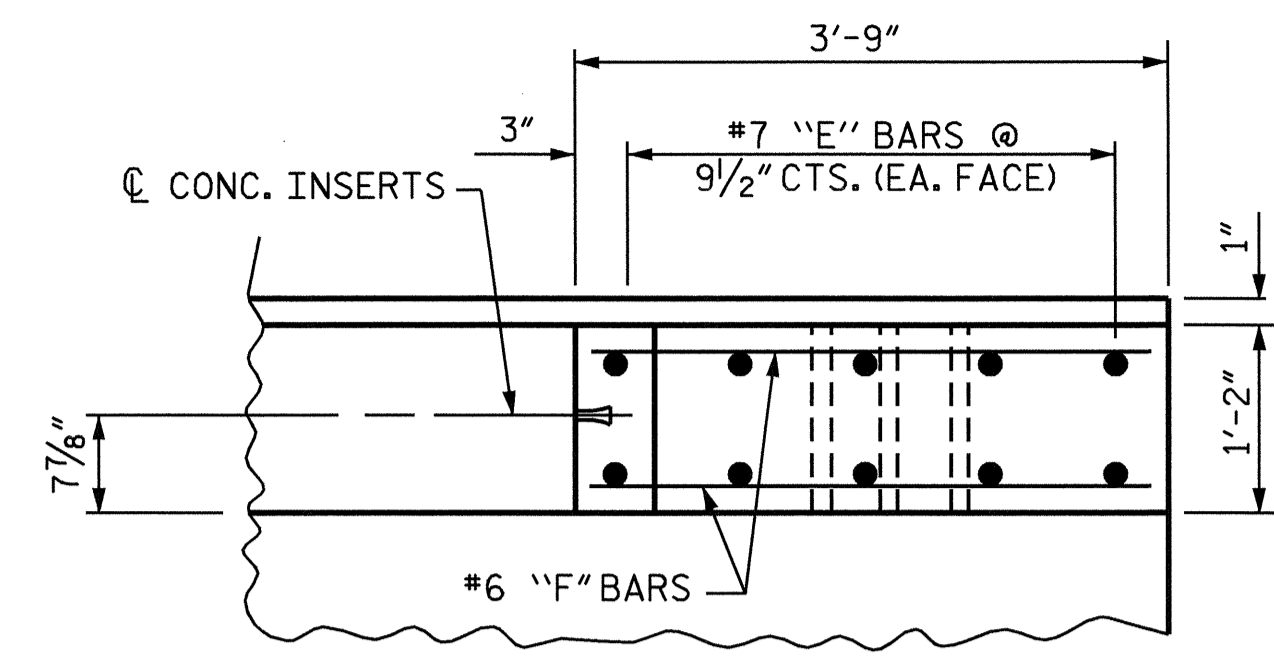
* EPOXY COATED REINFORCING STEEL 2030 LBS.
 CLASS AA CONCRETE 26.8 C.Y.
 1'-2" X 2'-10 1/2" CONCRETE PARAPET 97.67 LIN. FEET
 1'-2" X 3'-3 1/2" CONCRETE PARAPET 97.67 LIN. FEET



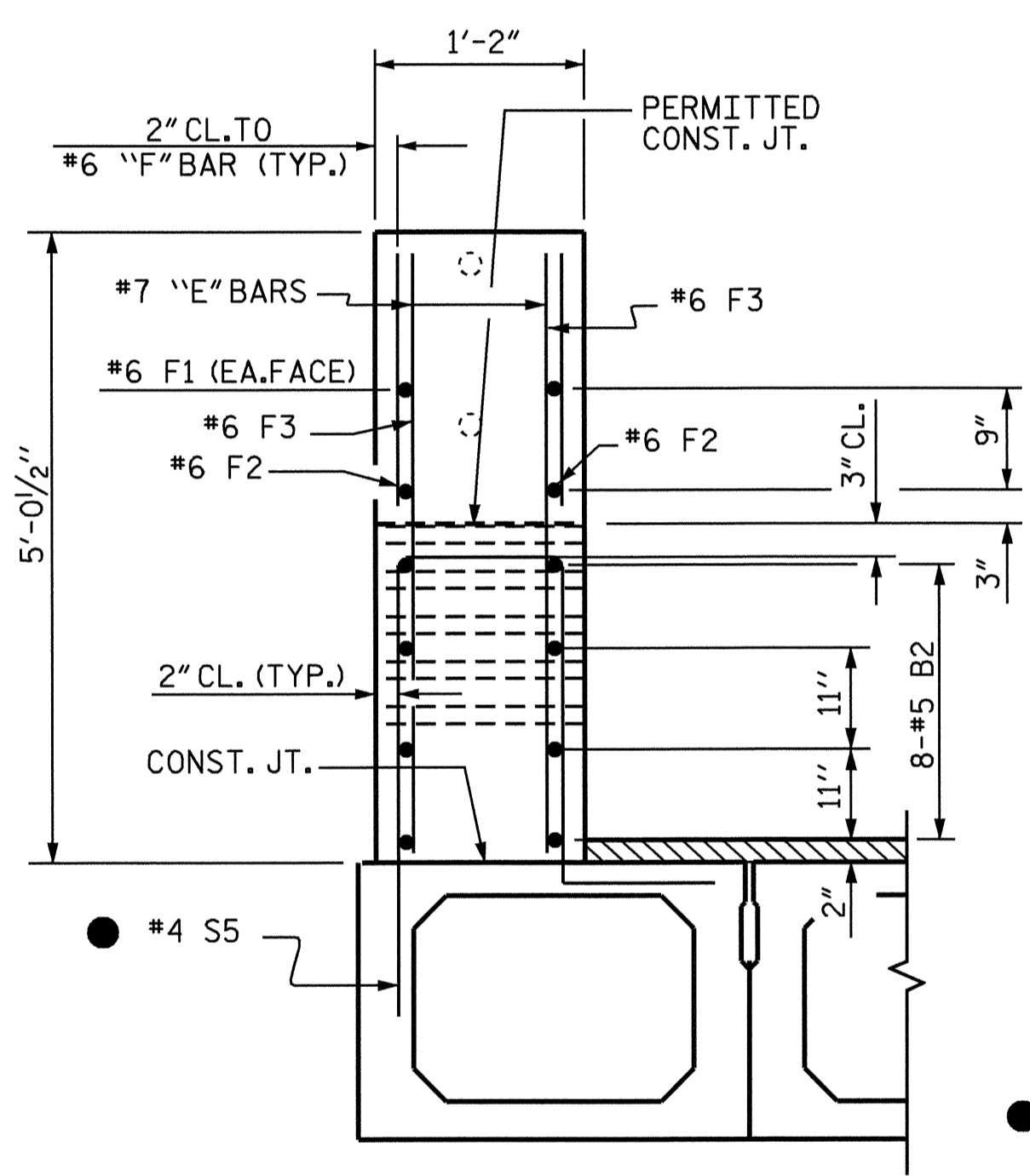
PLAN OF PARAPET



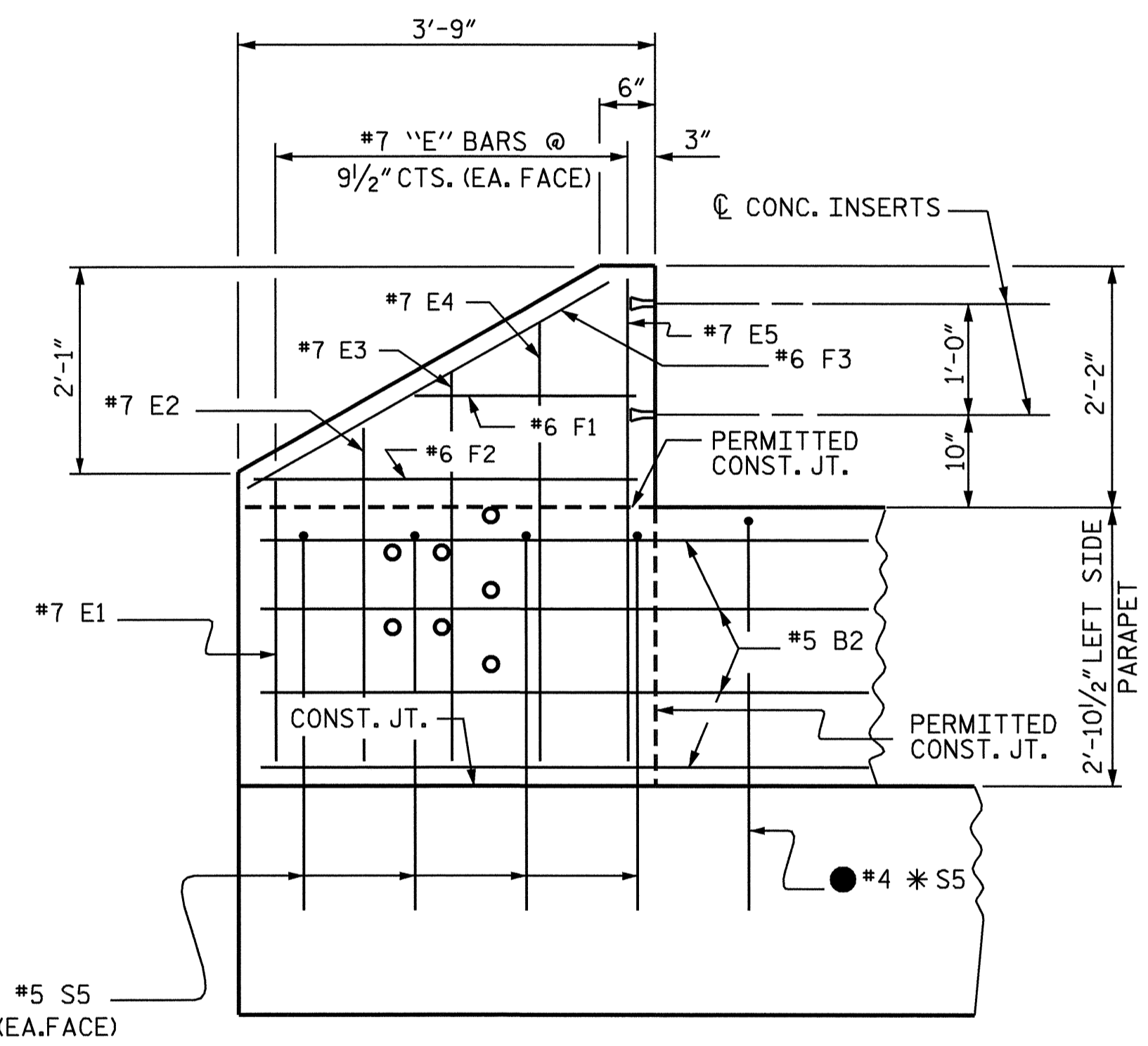
PLAN OF END POST



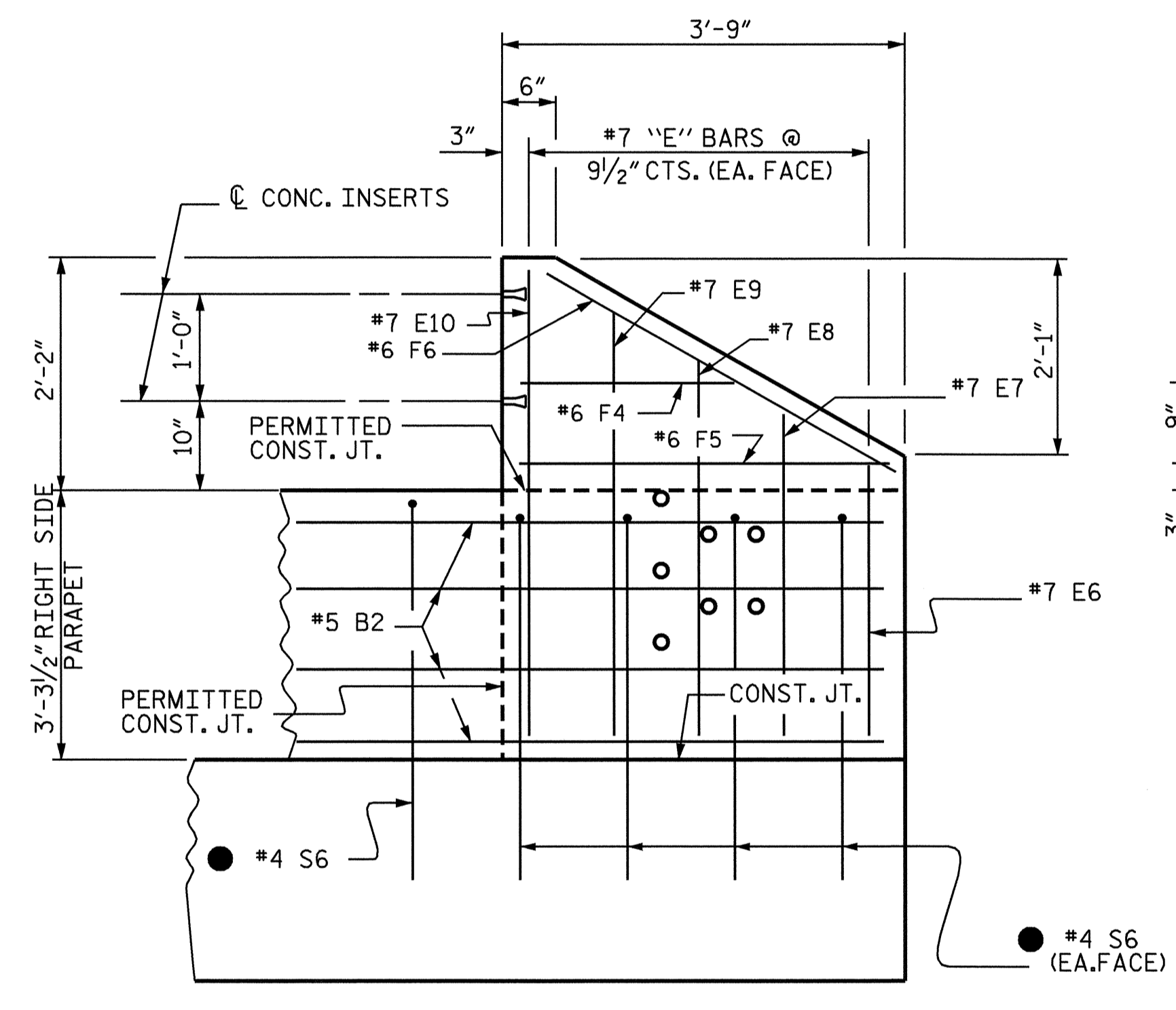
PLAN OF END POST



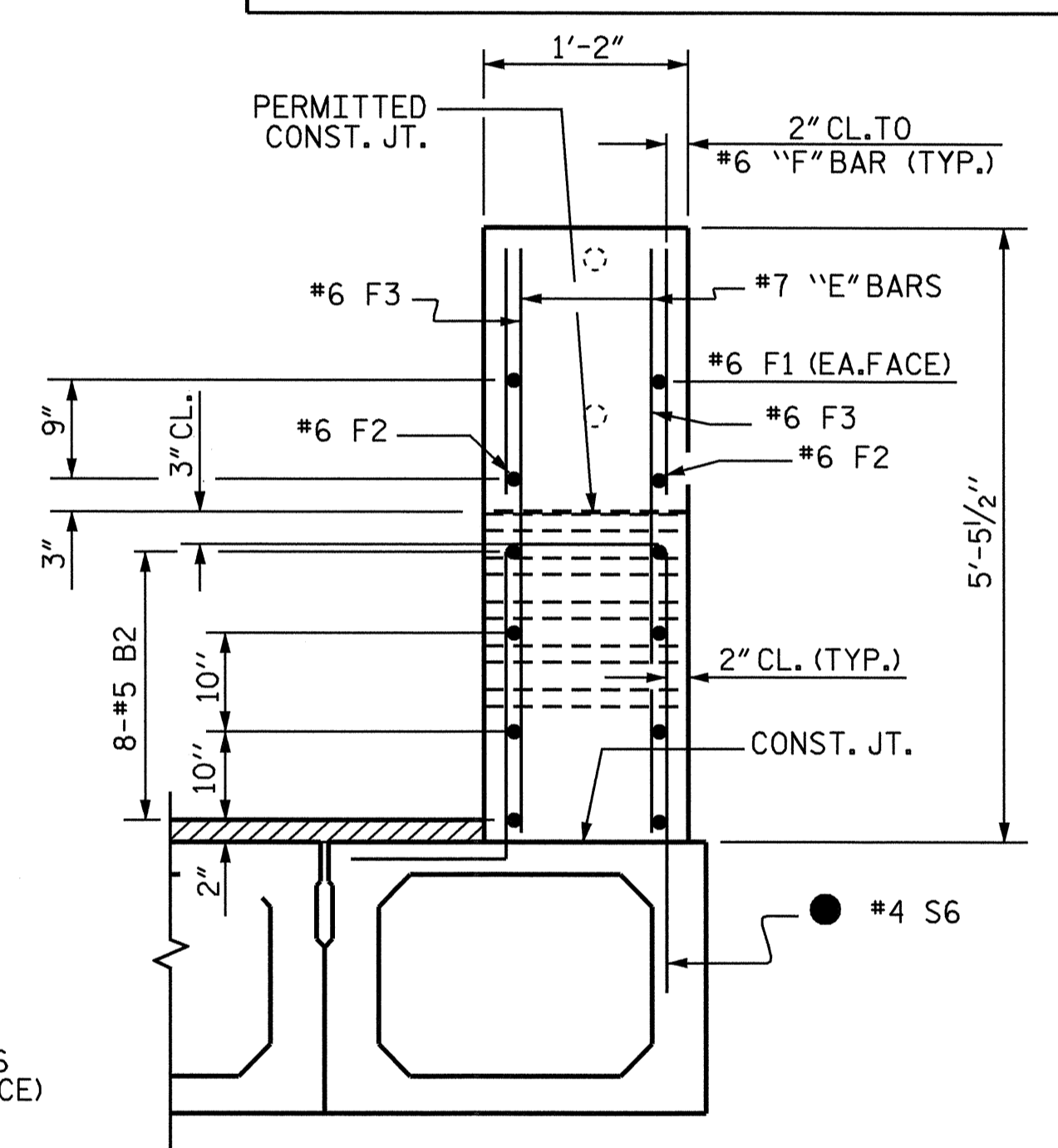
END VIEW - LEFT SIDE



ELEVATION - LEFT SIDE



ELEVATION - RIGHT SIDE



END VIEW - RIGHT SIDE

PARAPET AND END POST FOR TWO BAR RAIL

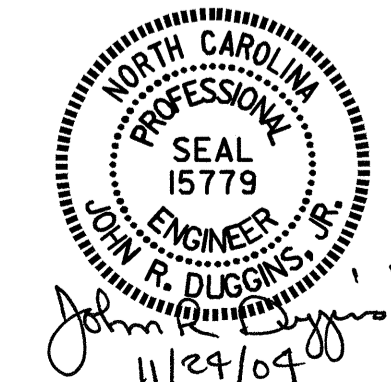
NOTES

FOR DETAILS OF CONCRETE INSERT AND GUARDRAIL ANCHOR ASSEMBLY, SEE "RAIL POST SPACINGS AND END OF RAIL DETAILS" SHEETS.
 ALL DIMENSIONS ARE TAKEN ALONG OUTSIDE EDGE OF PARAPET.
 ALL REINFORCING STEEL IN CONCRETE PARAPET SHALL BE EPOXY COATED.
 THE REINFORCING STEEL & CONCRETE IN THE END POSTS IS INCLUDED IN THE UNIT PRICE BID FOR THE CONCRETE PARAPET.

● FOR #4 S5 & #4 S6 BAR QUANTITIES, SEE "BILL OF MATERIAL FOR ONE BOX BEAM SECTION".

PROJECT NO. B-3522
 WAKE COUNTY
 STATION: 26+10.50 -L-

STATE OF NORTH CAROLINA
 DEPARTMENT OF TRANSPORTATION
 RALEIGH
CONCRETE PARAPET FOR 2 BAR METAL RAIL



REVISIONS						SHEET NO.	
NO.	BY:	DATE:	NO.	BY:	DATE:	S-8	
1			3			TOTAL SHEETS	
2			4			21	

DRAWN BY: M. POOLE DATE: 10/04
 CHECKED BY: J. K. WILKINS DATE: 11/04