

NOTES

THE LATERAL GUIDES ARE NOT TO BE POURED UNTIL AFTER THE BOX GIRDER UNITS ARE IN PLACE.

STIRRUPS IN CAP MAY BE SHIFTED AS NECESSARY TO CLEAR #8 DOWELS.

THE CONTRACTOR SHALL PROVIDE FOR INSTALLATION OF THE 4" Ø DRAIN PIPE THROUGH THE WING WALL AS REQUIRED FOR REINFORCED BRIDGE APPROACH FILLS, SEE THE ROADWAY PLANS. REINFORCING STEEL IN THE WING WALL MAY BE SHIFTED AS NECESSARY TO CLEAR THE DRAIN PIPE.

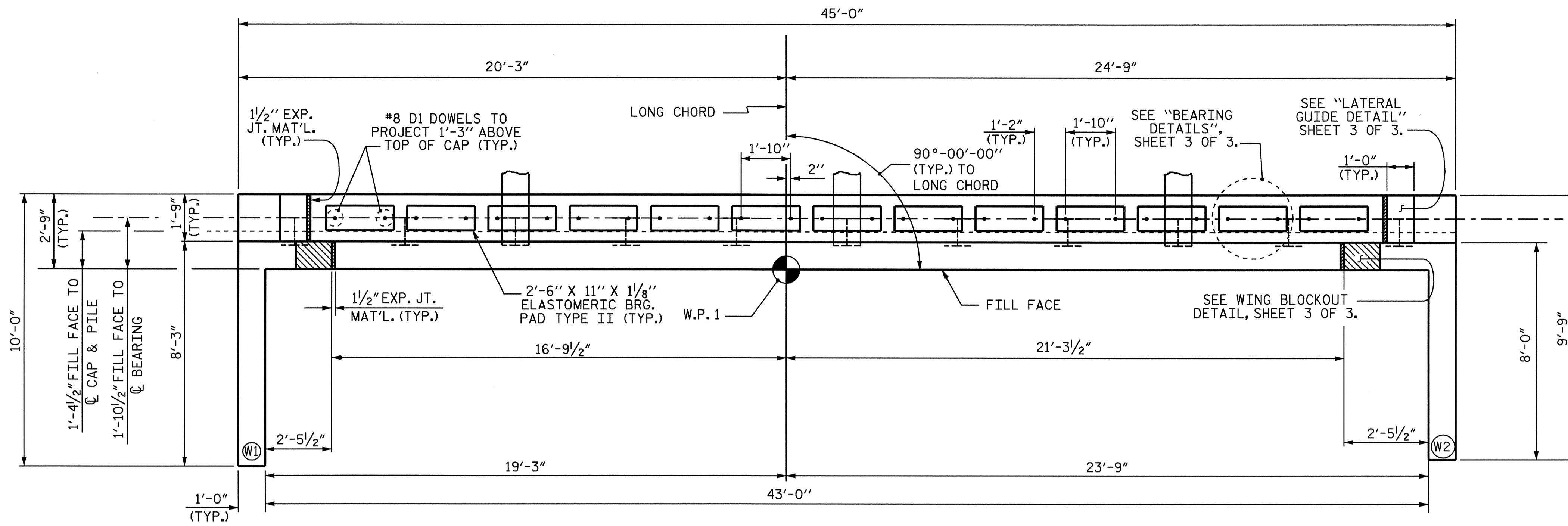
FOR PILE SPLICE DETAILS, SEE END BENT 1 SHEET 3 OF 3.

THE CONCRETE IN THE SHADED AREA OF THE WING SHALL BE POURED AFTER THE PARAPET AND END POST ARE CAST IF SLIP FORMING IS USED.

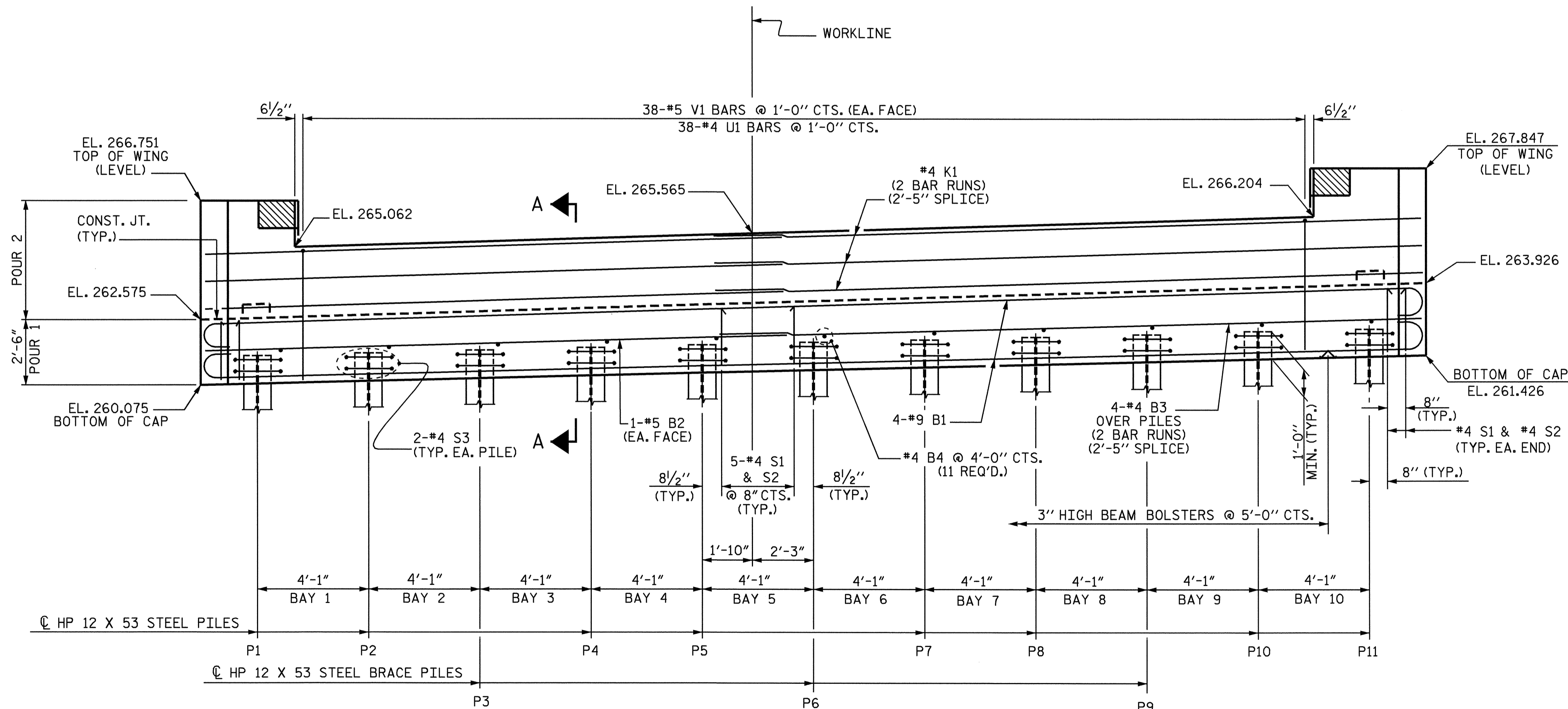
FOR EPOXY PROTECTIVE COATING, SEE SPECIAL PROVISIONS.

BACKWALL SHALL BE PLACED BEFORE APPLYING THE EPOXY PROTECTIVE COATING.

THE TOP SURFACE AREAS OF THE END BENT CAPS SHALL BE CURED IN ACCORDANCE WITH THE STANDARD SPECIFICATIONS EXCEPT THE MEMBRANE CURING COMPOUND METHOD SHALL NOT BE USED.



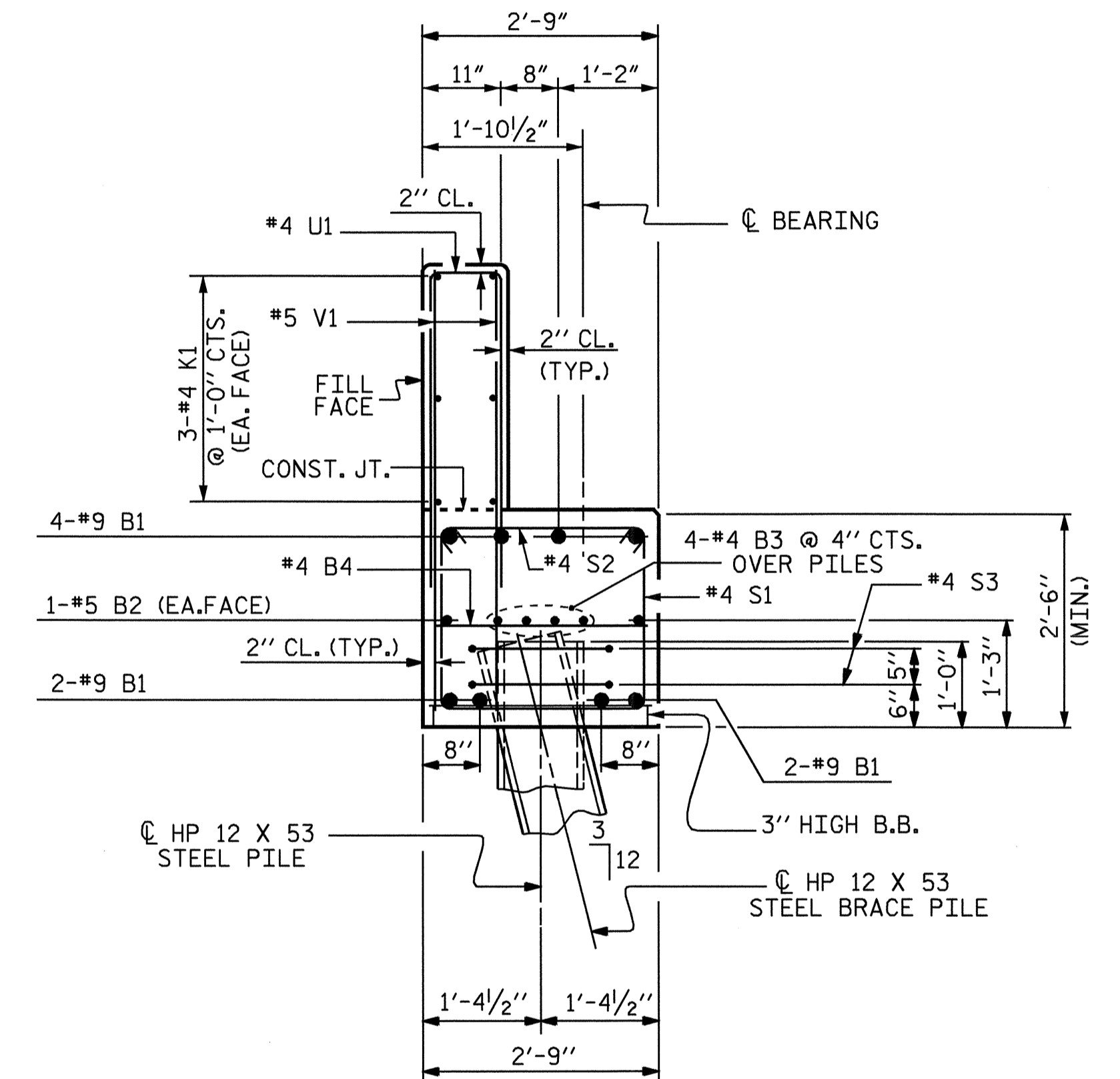
PLAN



ELEVATION

TOP OF PILE ELEVATIONS

P1	P2	P3	P4	P5	P6	P7	P8	P9	P10	P11
261.153	261.275	261.398	261.520	261.643	261.766	261.888	262.011	262.133	262.256	262.378



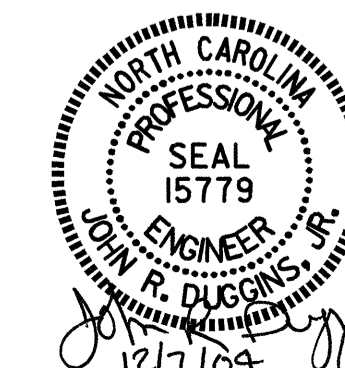
SECTION A-A

PROJECT NO. B-3522
 WAKE COUNTY
 STATION: 26+10.50 -L-

SHEET 1 OF 3

STATE OF NORTH CAROLINA
 DEPARTMENT OF TRANSPORTATION
 RALEIGH

**SUBSTRUCTURE
 END BENT 1**



REVISIONS						TOTAL SHEETS
NO.	BY:	DATE:	NO.	BY:	DATE:	S-13
1			3			21
2			4			

DRAWN BY: M. POOLE DATE: 9/2004
 CHECKED BY: S. W. PEARCE DATE: 10/2004