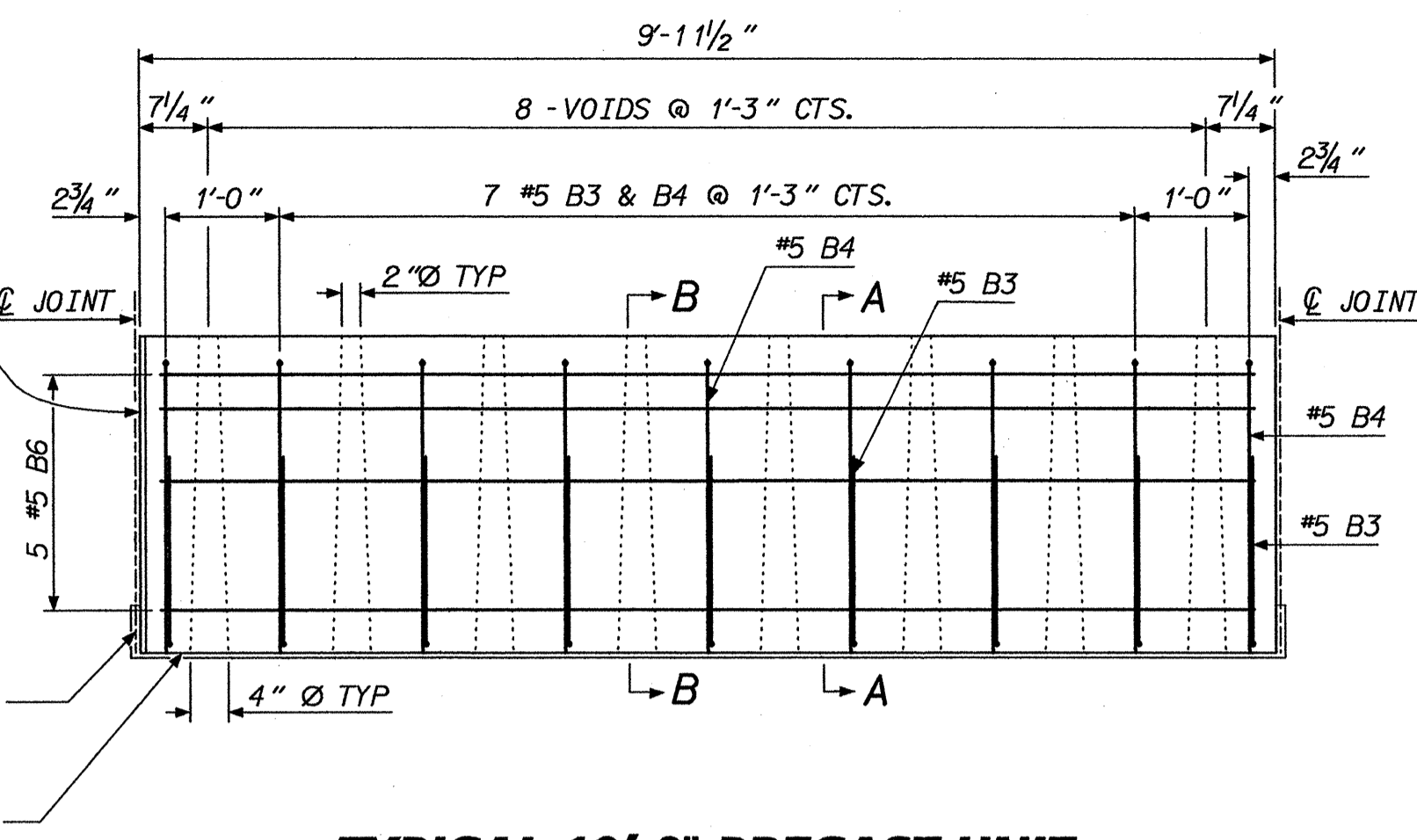


TYPICAL 5'-0" PRECAST UNIT



TYPICAL 10'-0" PRECAST UNIT

BILL OF MATERIAL FOR ONE 5'-0" RAIL SECTION

| BAR | NO. | SIZE | TYPE | LENGTH | WEIGHT |
|-----|-----|------|------|--------|--------|
| B3 | 5 | #5 | 1 | 4'-11" | 26 |
| B4 | 5 | #5 | 2 | 2'-8" | 14 |
| B5 | 5 | #5 | STR | 4'-7" | 24 |

REINFORCING STEEL LBS. = 64
CLASS AA CONCRETE CU. YDS. = 0.5

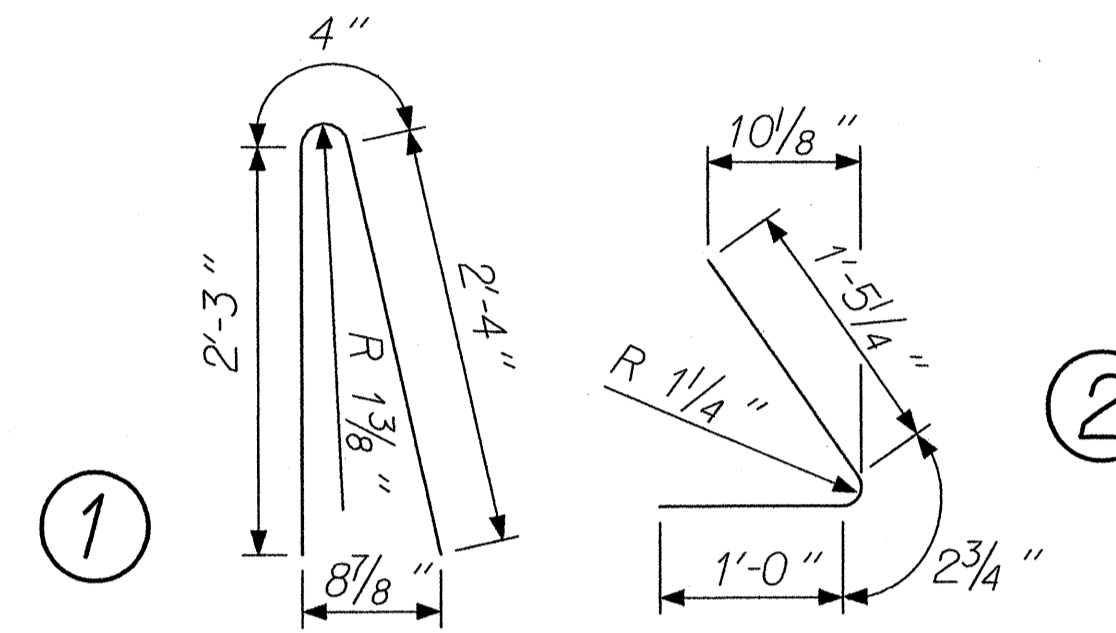
BILL OF MATERIAL FOR ONE 10'-0" RAIL SECTION

| BAR | NO. | SIZE | TYPE | LENGTH | WEIGHT |
|-----|-----|------|------|--------|--------|
| B3 | 9 | #5 | 1 | 4'-11" | 46 |
| B4 | 9 | #5 | 2 | 2'-8" | 25 |
| B6 | 5 | #5 | STR | 9'-7" | 50 |

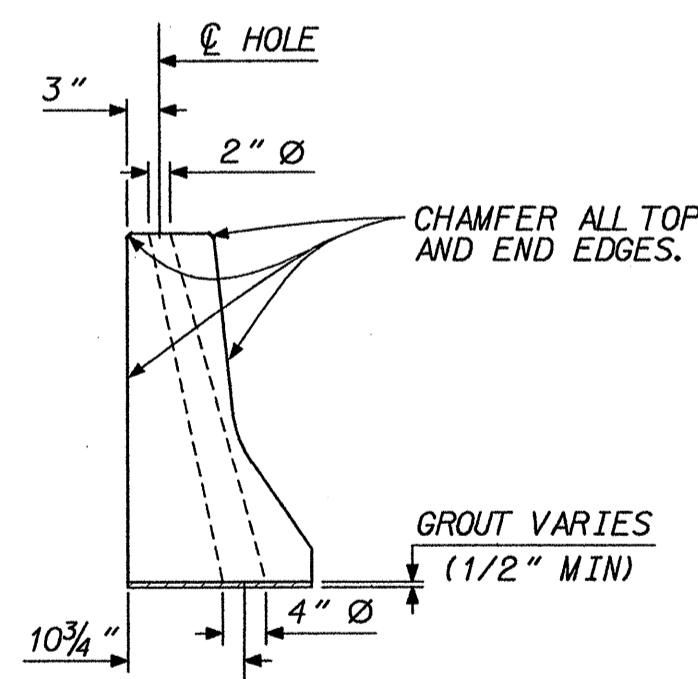
REINFORCING STEEL LBS. = 121
CLASS AA CONCRETE CU. YDS. = 1.0

NOTES

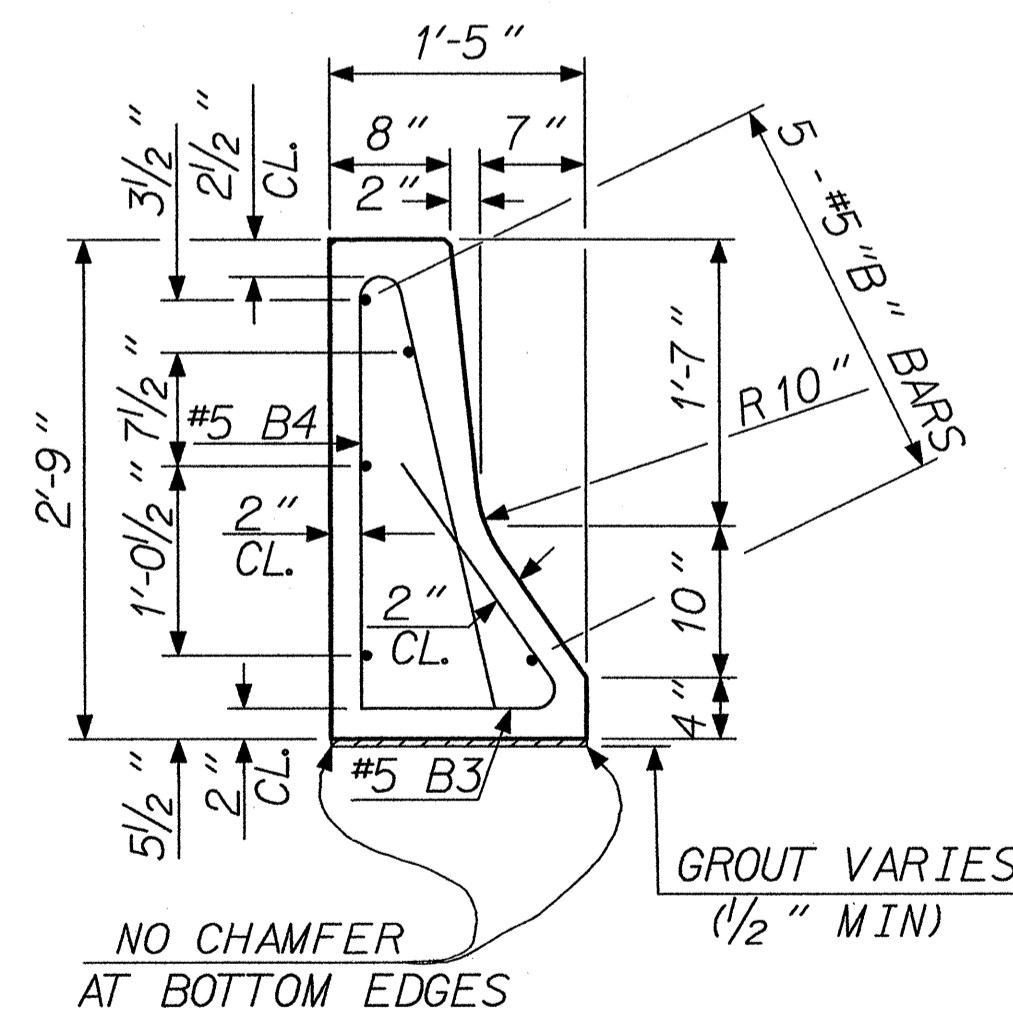
EACH PRECAST RAIL UNIT SHALL BE CAST WITH CLASS AA CONCRETE.
EACH PRECAST RAIL UNIT SHALL BE SUPPLIED WITH LIFTING DEVICE(S). NO CABLES ARE TO BE WRAPPED AROUND THE RAIL UNITS FOR LIFTING.
THE EXPANSION JOINT SEALER SHALL BE LOW MODULUS SILICONE SEALANT. SEE SECTION 1028-4 OF THE STANDARD SPECIFICATIONS.



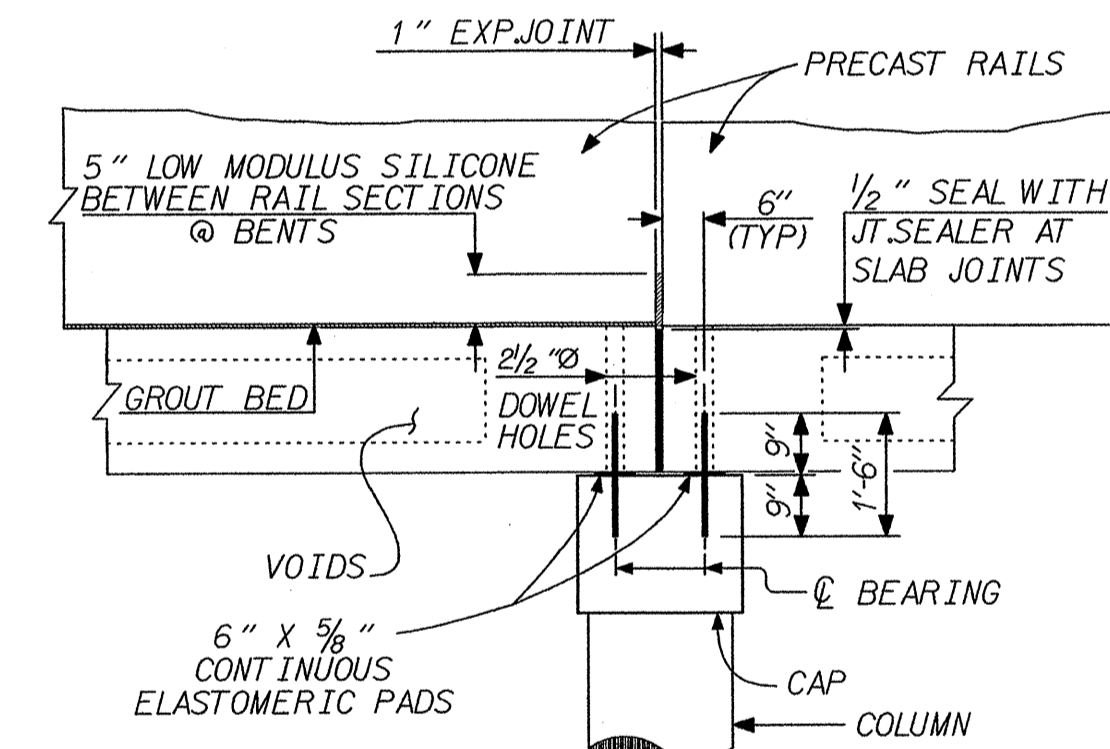
REINFORCING BAR TYPES
BAR DIMENSIONS ARE OUT TO OUT



SECTION B-B



SECTION A-A



SECTION AT BENT

PROJECT NO. 36971
COUNTY: UNION
STATION: 17+51.30
REPLACES BRIDGE NO. 33

STATE OF NORTH CAROLINA
DEPARTMENT OF TRANSPORTATION
RALEIGH

STANDARD PRECAST CONCRETE
BARRIER RAIL SECTIONS
50', 55' AND 60' SPANS
36' CLEAR ROADWAY - 90° SKEW

| REVISIONS | | | | | SHEET NO. |
|-----------|----|------|-----|----|-----------|
| NO. | BY | DATE | NO. | BY | DATE |
| 1 | | | 3 | | |
| 2 | | | 4 | | |

TOTAL SHEETS: 24

Plans prepared by:
KO & ASSOCIATES, P.C.
Consulting Engineers
101 SCHUB DR., SUITE #202
RALEIGH, NC 27606
For Division of Highways

NOT TO SCALE