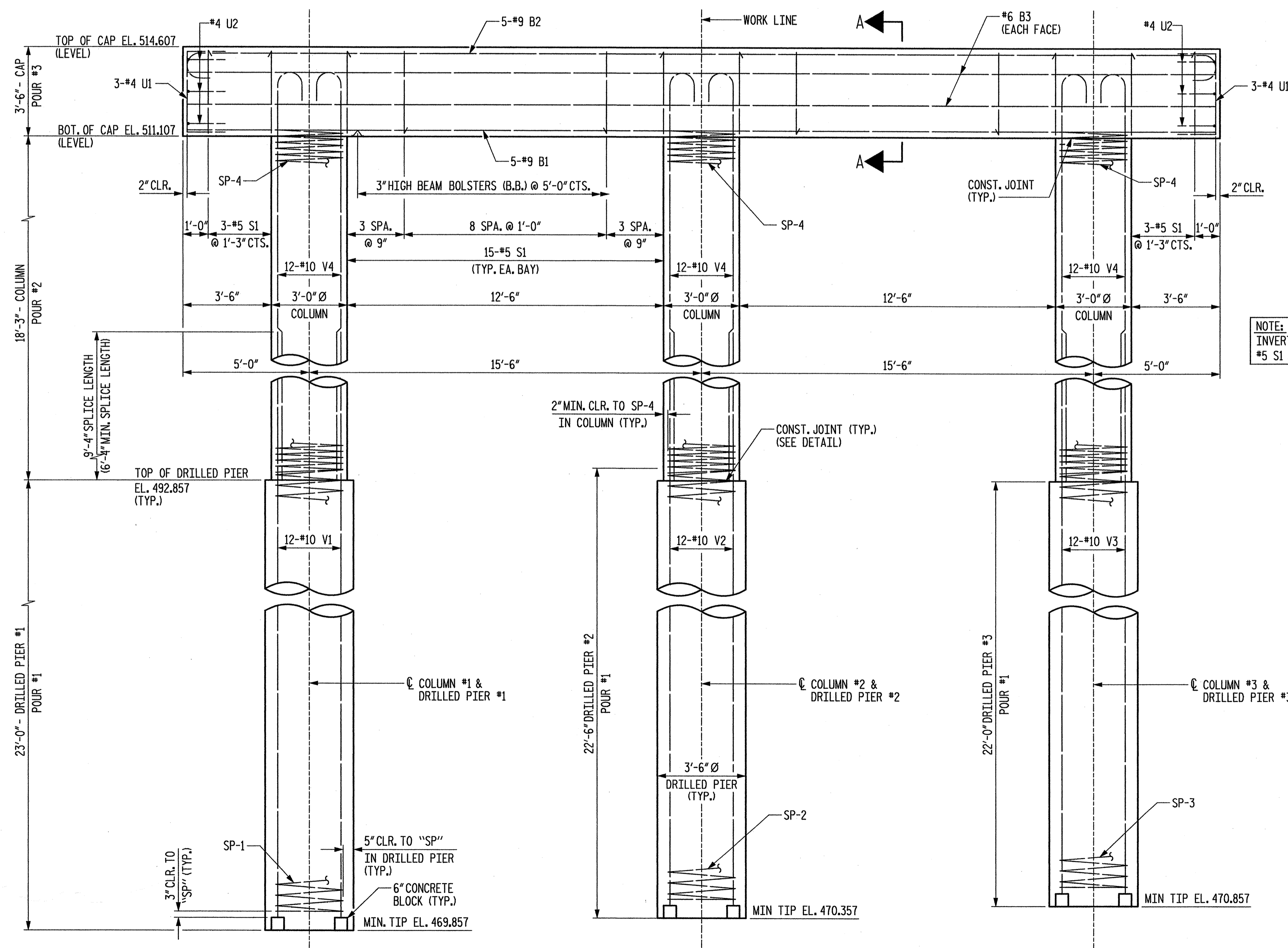
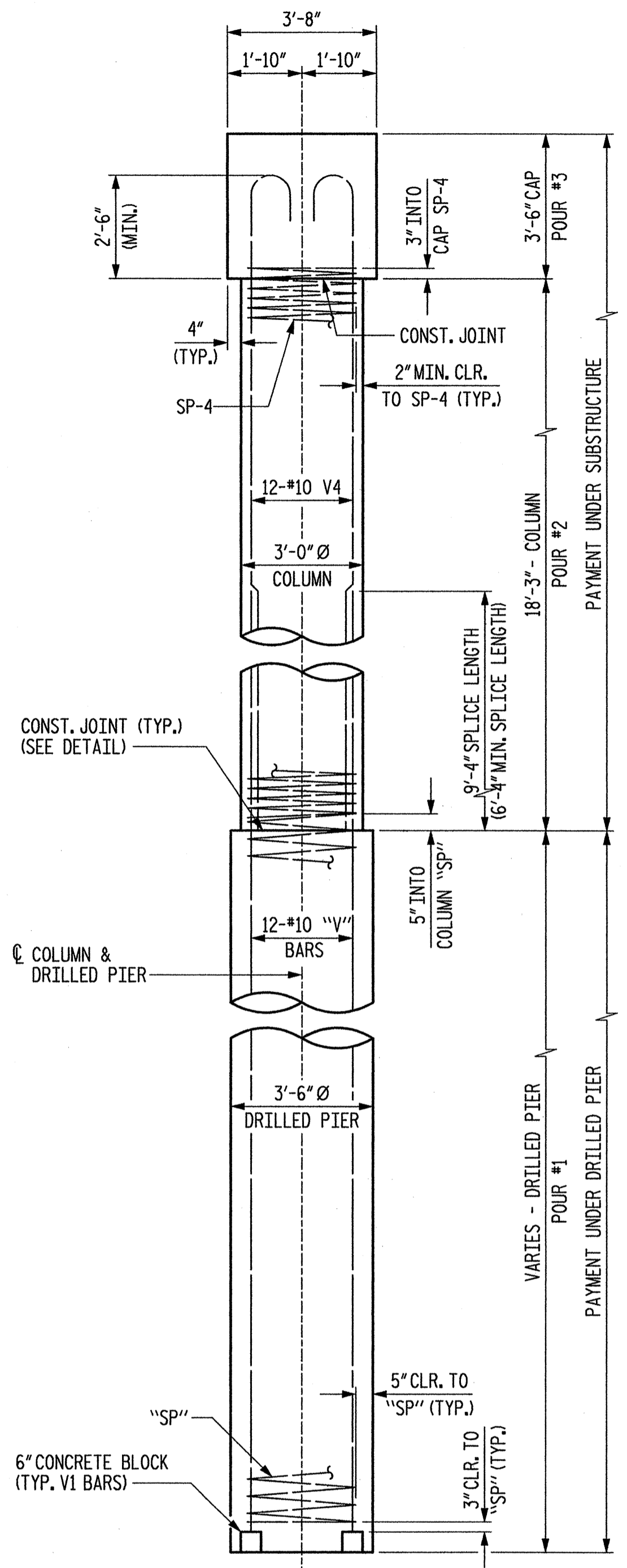


PLAN



ELEVATION



END ELEVATION

NOTE:  
INVERT ALTERNATE #5 S1 STIRRUPS.

NOTES:

- STIRRUPS MAY BE SHIFTED SLIGHTLY AS NECESSARY TO CLEAR DOWELS.
- HOOKS ON "V" BARS MAY BE TURNED AS NECESSARY FOR PLACING REINFORCING STEEL.
- THE CONTRACTOR'S ATTENTION IS CALLED TO THE FACT THAT THE LONGITUDINAL REINFORCEMENT FOR THE DRILLED PIERS IS DETAILED WITH 3 FEET OF EXTRA LENGTH.

PROJECT NO. 36971  
 COUNTY: UNION  
 STATION: 17 + 51.30  
 REPLACES BRIDGE NO. 33

STATE OF NORTH CAROLINA  
 DEPARTMENT OF TRANSPORTATION  
 RALEIGH

CAST - IN - PLACE  
 INTERIOR BENT #2  
 36' CLEAR ROADWAY - 90° SKEW

REVISIONS						SHEET NO.	
NO.	BY	DATE	NO.	BY	DATE	12	
1			3			TOTAL SHEETS	
2			4			24	

Plans prepared by:  
**KO & ASSOCIATES, P.C.**  
 Consulting Engineers  
 1011 SCHUBB DR. SUITE #202  
 RALEIGH, N.C. 27606  
 For Division of Highways

NOT TO SCALE

FILE NAME: P:\Structures\33\_ah12.dgn  
 DRAWN BY: B.E. LANNING DATE: JULY 2004  
 CHECKED BY: J.C. KO DATE: JULY 2004