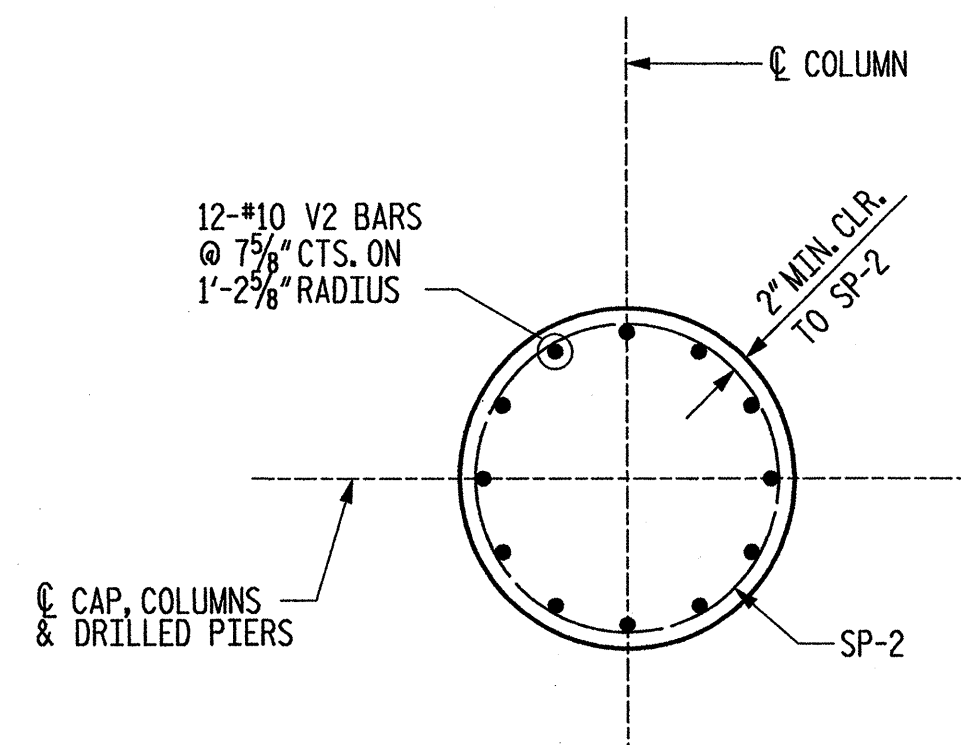
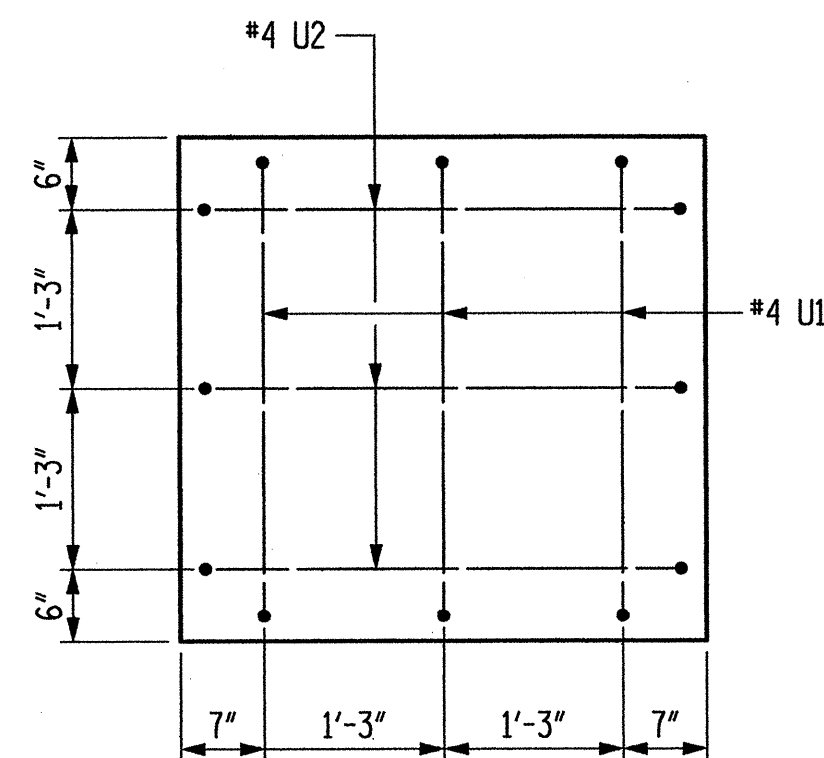


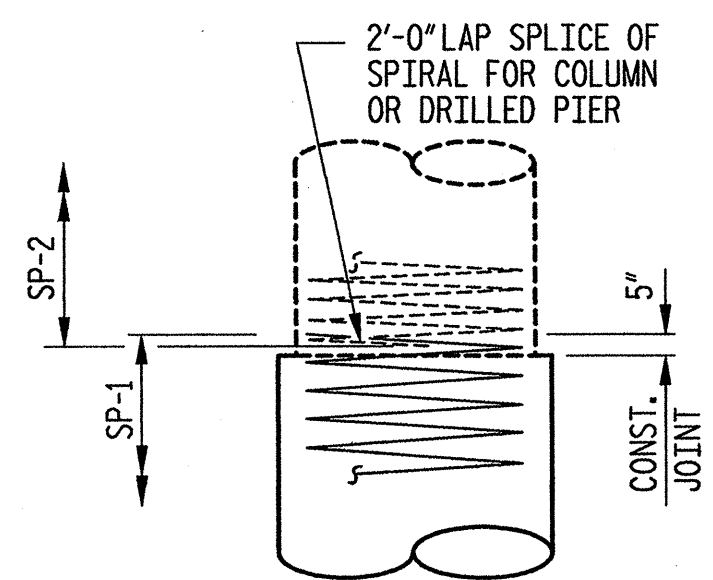
SECTION A-A



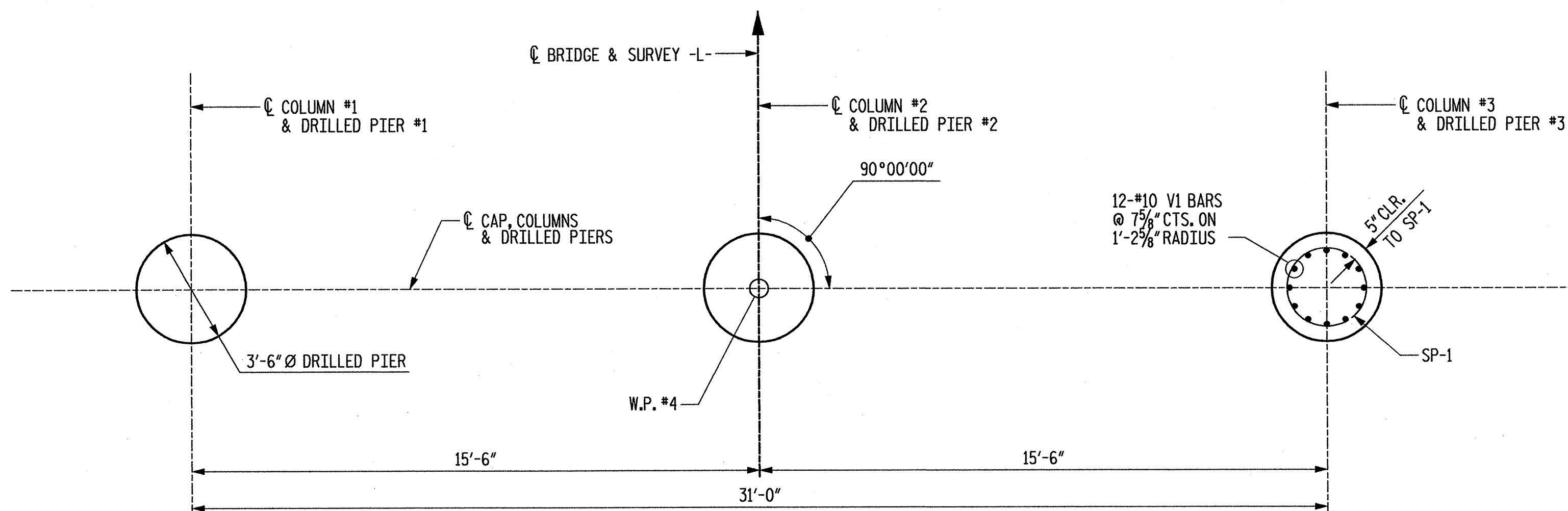
TYPICAL COLUMN SECTION



CAP END VIEW



CONSTRUCTION JOINT DETAIL

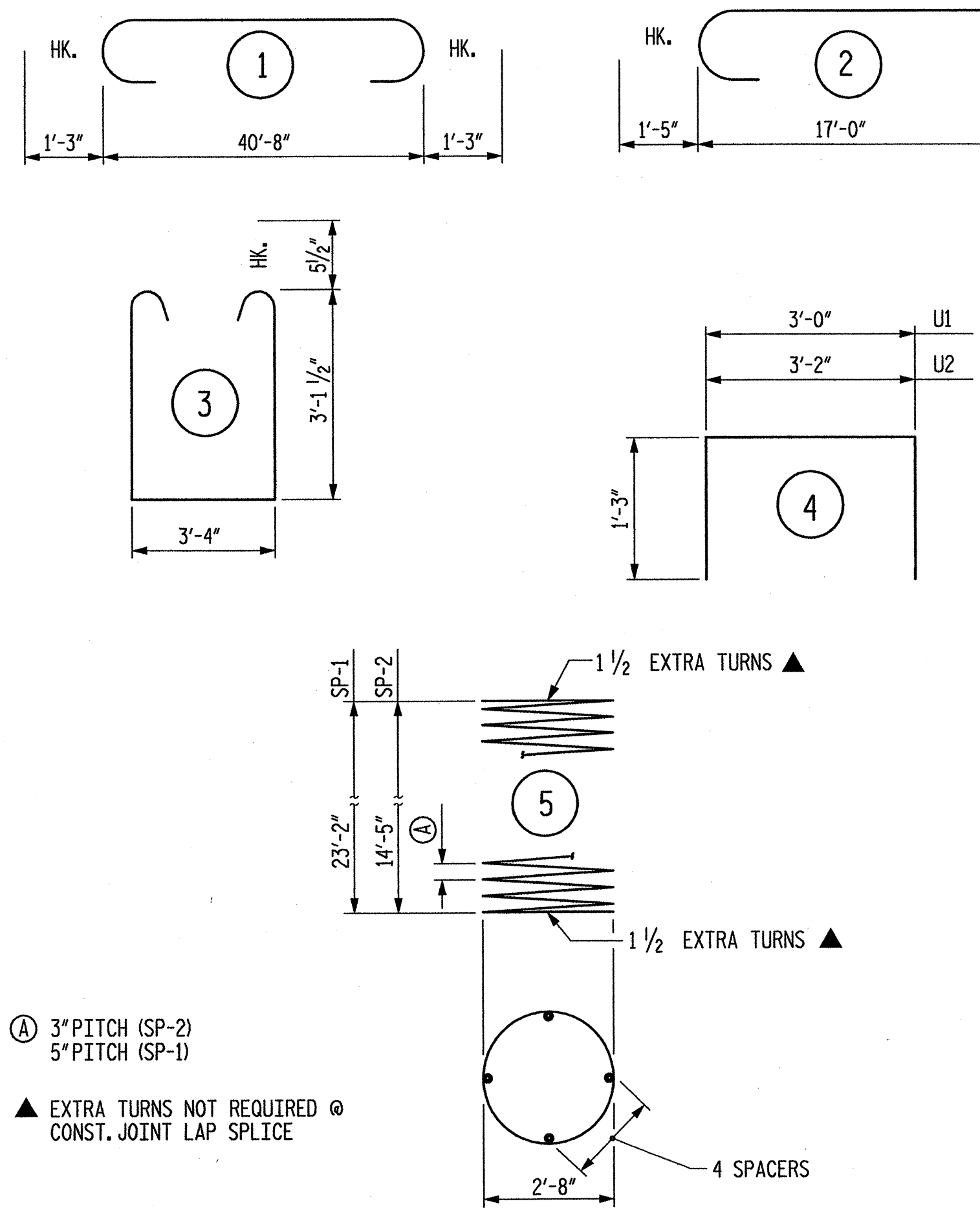


PLAN OF DRILLED PIERS

ALL DIMENSIONS AND DETAILS SHOWN FOR DRILLED PIERS ARE TYPICAL FOR EACH DRILLED PIER.

BAR TYPES

ALL BAR DIMENSIONS ARE OUT TO OUT.



- Ⓐ 3" PITCH (SP-2)
5" PITCH (SP-1)
- ▲ EXTRA TURNS NOT REQUIRED @
CONST. JOINT LAP SPLICE

BILL OF MATERIAL

BENT #3						
BAR	NO.	SIZE	TYPE	LENGTH	WEIGHT	
B1	5	9	STR	40'-8"	691	
B2	5	9	1	43'-2"	734	
B3	4	6	STR	40'-8"	244	
D1	52	6	STR	1'-6"	117	
S1	36	5	3	10'-6"	394	
U1	6	4	4	5'-6"	22	
U2	6	4	4	5'-8"	23	
V1	36	10	STR	32'-4"	5,009	
V2	36	10	2	18'-5"	2,853	
REINFORCING STEEL TOTAL				10,087	LB	
SPIRAL COLUMN REINFORCING STEEL						
BAR	NO.	SIZE	TYPE	LENGTH	WEIGHT	
SP-1	3	***	5	471'-6"	1,475	
SP-2	3	***	5	488'-2"	978	
SPIRAL COLUMN REINF. STEEL TOTAL				2,453	LB	
POUR #1 DRILLED PIER					25.1	CY
POUR #2 COLUMN					11.4	CY
POUR #3 CAP					19.5	CY
TOTAL CY					56.0	
3'-6" Ø DRILLED PIER IN SOIL					36.3	LF
3'-6" Ø DRILLED PIER NOT IN SOIL					34.2	LF
3'-6" Ø PERMANENT STEEL CASING					27.0	LF
*** NOTE: THE SP-1 SPIRAL REINFORCING STEEL SHALL BE W31 OR D-31 COLD DRAWN WIRE OR #5 PLAIN OR DEFORMED BAR.						
*** NOTE: THE SP-2 SPIRAL REINFORCING STEEL SHALL BE W20 OR D-20 COLD DRAWN WIRE OR #4 PLAIN OR DEFORMED BAR.						

PROJECT NO. 36971
 COUNTY: UNION
 STATION: 17+51.30
 REPLACES BRIDGE NO. 33

STATE OF NORTH CAROLINA
 DEPARTMENT OF TRANSPORTATION
 RALEIGH

CAST - IN - PLACE
 INTERIOR BENT #3
 36' CLEAR ROADWAY - 90° SKEW

Plans prepared by:
KO & ASSOCIATES, P.C.
 Consulting Engineers
 101 SCHAUER DR. SUITE #202
 RALEIGH, NC 27606
 For Division of Highways

REVISIONS						SHEET NO.
NO.	BY	DATE	NO.	BY	DATE	15
1			3			TOTAL SHEETS
2			4			24

NOT TO SCALE