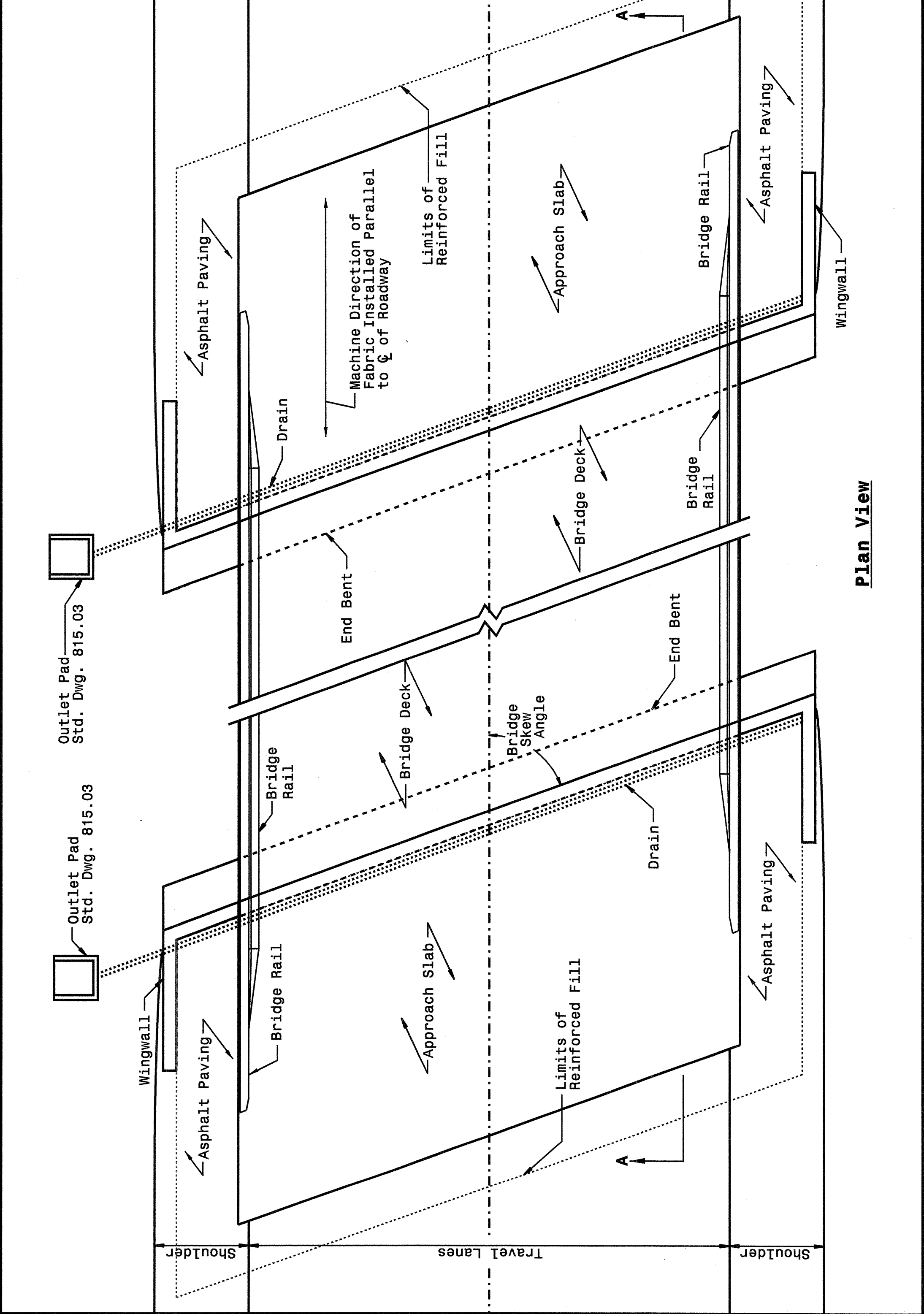


STATE OF NORTH CAROLINA  
DEPT. OF TRANSPORTATION  
DIVISION OF HIGHWAYS  
RALEIGH, N.C.

ENGLISH DETAIL DRAWING FOR  
**REINFORCED BRIDGE APPROACH FILLS**

SHEET 1 OF 4  
**422D10**



STATE OF NORTH CAROLINA  
DEPT. OF TRANSPORTATION  
DIVISION OF HIGHWAYS  
RALEIGH, N.C.

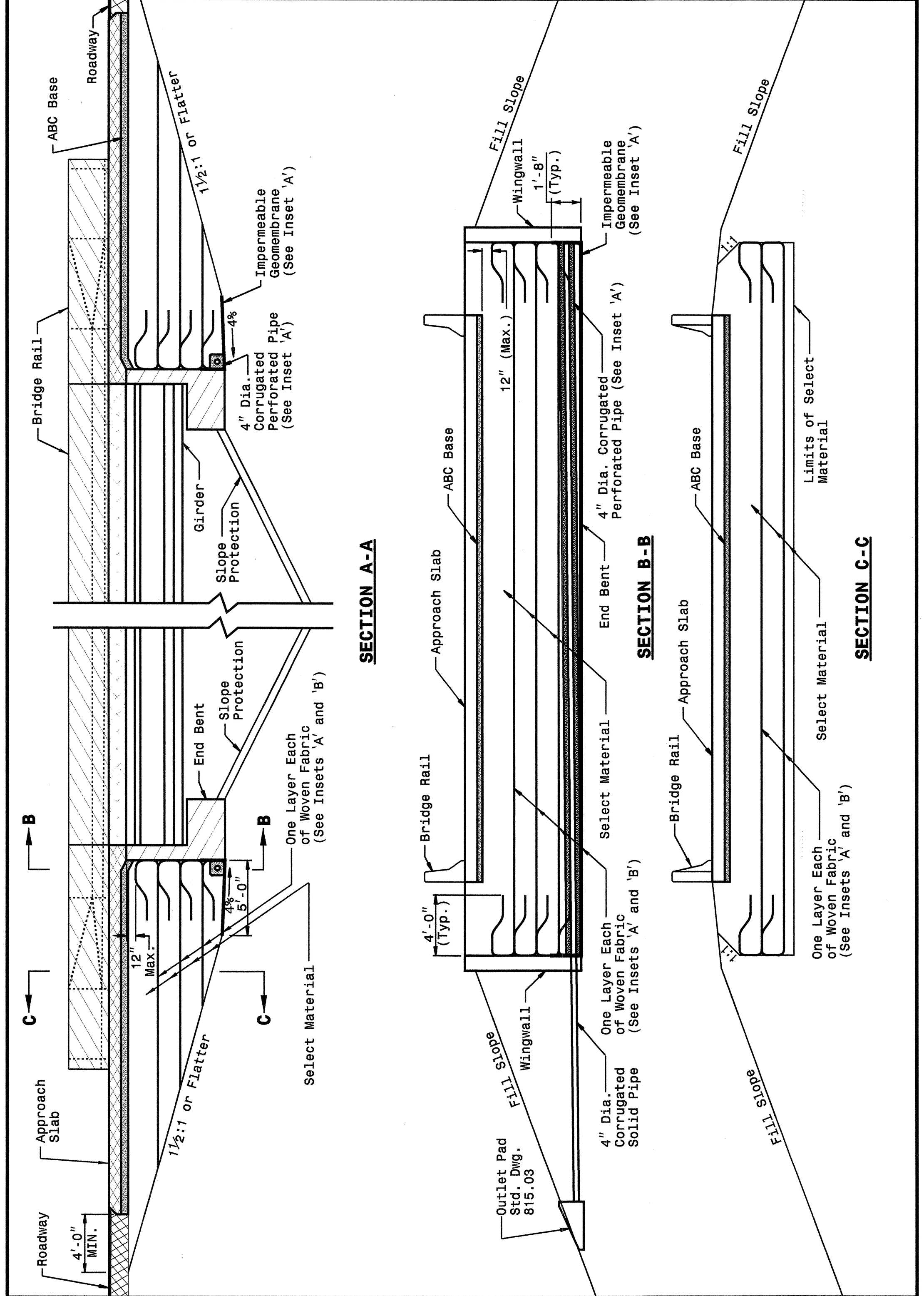
ENGLISH DETAIL DRAWING FOR  
**REINFORCED BRIDGE APPROACH FILLS**

SHEET 1 OF 4  
**422D10**

STATE OF NORTH CAROLINA  
DEPT. OF TRANSPORTATION  
DIVISION OF HIGHWAYS  
RALEIGH, N.C.

ENGLISH DETAIL DRAWING FOR  
**REINFORCED BRIDGE APPROACH FILLS**

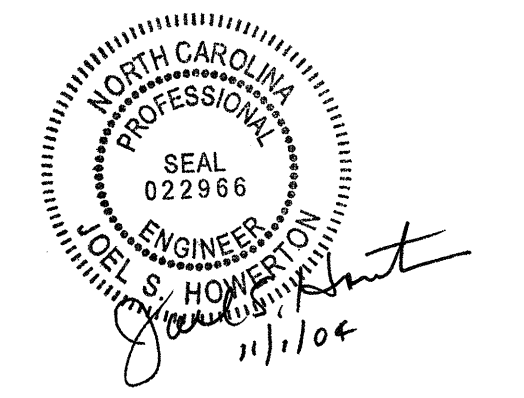
SHEET 2 OF 4  
**422D10**



STATE OF NORTH CAROLINA  
DEPT. OF TRANSPORTATION  
DIVISION OF HIGHWAYS  
RALEIGH, N.C.

ENGLISH DETAIL DRAWING FOR  
**REINFORCED BRIDGE APPROACH FILLS**  
PRESTRESSED AND PLATE GIRDER BRIDGES

SHEET 2 OF 4  
**422D10**



**DESIGN SERVICES UNIT**  
**STANDARDS AND SPECIAL DESIGN**  
Office 919-250-4128 FAX 919-250-4119

**SEE PLATE FOR TITLE**

ORIGINAL BY: 2002 STANDARDS DATE: 01-15-02  
 MODIFIED BY: E.E. WARD DATE: 09-15-04  
 CHECKED BY: [Signature] DATE: 9/16/04  
 FILE SPEC.: stds/02stdstodetails/english/422d10.dgn

16-SEP-2004 10:51  
 M:\Special Details\stds\02stds to Special Details\english\422d10\0422d10.dgn  
 encward AT 05212260