


# TWO LANE, TWO WAY WORK ZONE (L-LINES)

FURNISHED BY THE DEPARTMENT

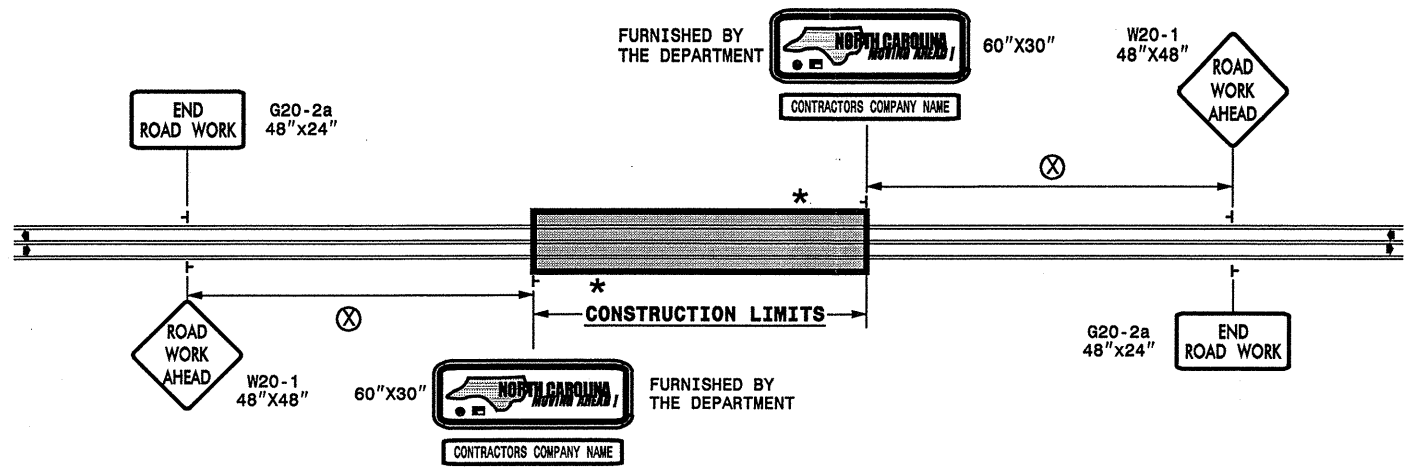


60" X 30"

---

CONTRACTORS COMPANY NAME

60" Max. X 12"



POSTED SPEED LIMIT (M.P.H.)	RECOMMENDED MINIMUM SIGN SPACING
P.S.L. ≤ 50	350'
P.S.L. ≥ 55	500'

**\* ROAD WORK NEXT XX MILES G20-1A 60"X24"**

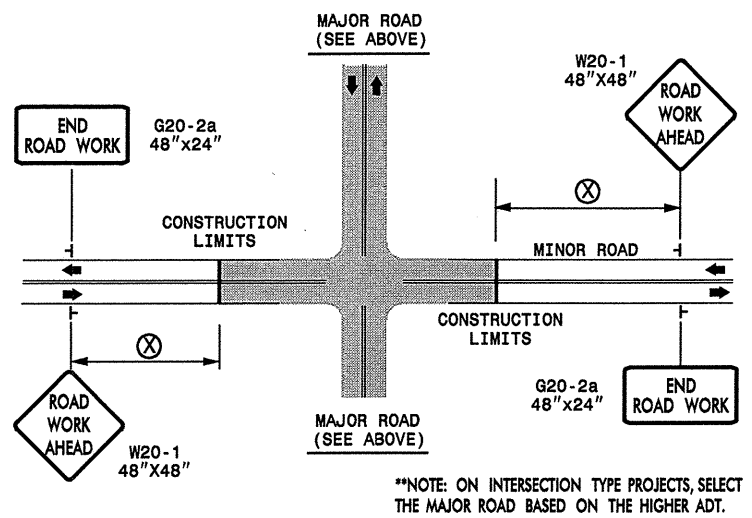
THIS SIGN TO BE USED ON PROJECTS LONGER THAN 2 MILES  
 THE NUMBER DISPLAYED ON THE SIGN IS TO BE A WHOLE NUMBER ROUNDED UP TO THE NEXT MILE  
 IT'S TO BE LOCATED 1,500 FEET INSIDE OF THE CONSTRUCTION LIMITS

PROJ. REFERENCE NO. WBS 37426  
 7 of 14

SHEET NO. NCMA-1

STATE OF NORTH CAROLINA  
 DEPT. OF TRANSPORTATION  
 DIVISION OF HIGHWAYS  
 RALEIGH, N.C.

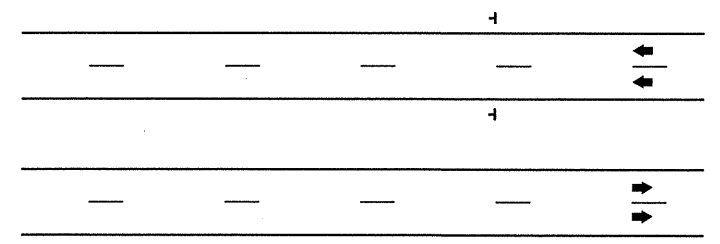
# INTERSECTIONS (-Y- LINES)



# FREEWAYS/INTERSTATES

DUAL MOUNT "ROAD WORK AHEAD" SIGNS 1,000' IN ADVANCE OF PROJECT LIMITS

DUAL MOUNT "MOVING AHEAD" SIGNS 500' IN ADVANCE OF PROJECT LIMITS



DETAIL DRAWING FOR ADVANCE WARNING WORK ZONE SIGNS

SHEET 1 OF 1

# GENERAL NOTES

SEE SPECIAL PROVISIONS FOR "NORTH CAROLINA MOVING AHEAD" REQUIREMENTS.

**LEGEND**


— STATIONARY SIGN

← DIRECTION OF TRAFFIC FLOW

APPROVED: \_\_\_\_\_ DATE: \_\_\_\_\_

SEAL

**ADVANCE WARNING WORK ZONE SIGNS FOR "MOVING AHEAD"**

SCALE: NONE		REVISIONS
DATE: 07/03		11/04
DWG. BY: JSK		
DESIGN BY: JSK		
REVIEWED BY: SK		