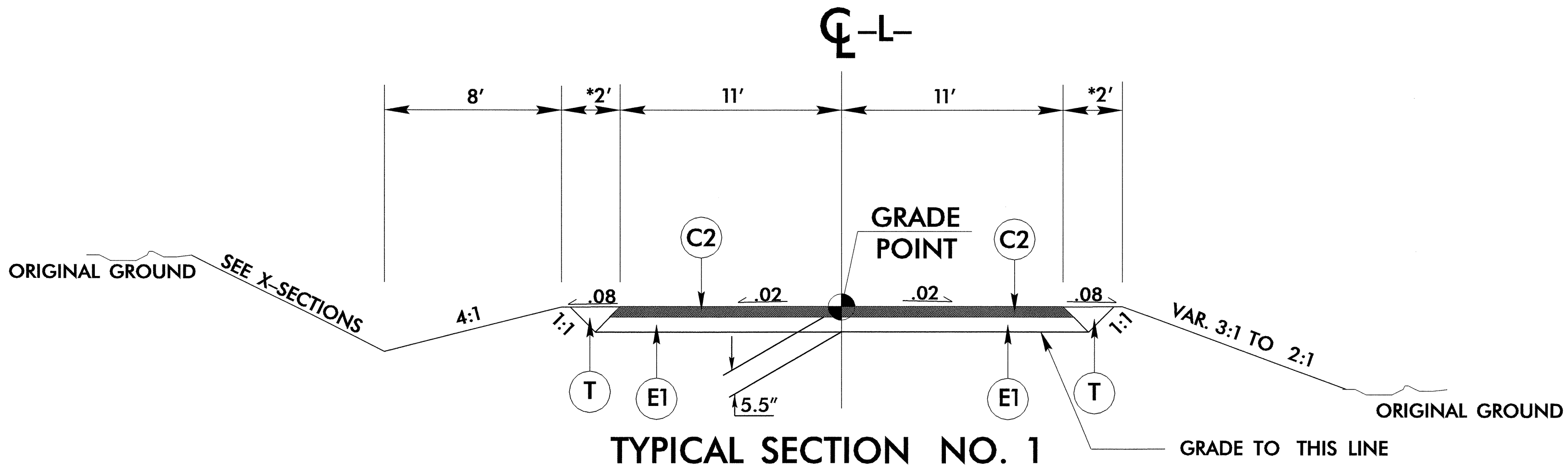


6/2/99

PAVEMENT SCHEDULE	
C1	PROPOSED APPROX. 1/4" ASPHALT CONCRETE SURFACE COURSE, TYPE SF9.5A, AT AN AVERAGE RATE OF 137.5 LBS. PER SQ. YD.
C2	PROPOSED APPROX. 2 1/2" ASPHALT CONCRETE SURFACE COURSE, TYPE SF9.5A, AT AN AVERAGE RATE OF 137.5 LBS. PER SQ. YD. IN EACH OF TWO LAYERS.
C3	PROPOSED VARIABLE DEPTH ASPHALT CONCRETE SURFACE COURSE, TYPE SF9.5A, AT AN AVERAGE RATE OF 110 LBS. PER SQ. YD. PER 1" DEPTH, TO BE PLACED IN LAYERS NOT TO EXCEED 1 1/2" IN DEPTH.
E1	PROPOSED APPROX. 3" ASPHALT CONCRETE BASE COURSE, TYPE B25.0B, AN AVERAGE RATE OF 342 LBS. PER SQ. YD.
J	PROPOSED 6" AGGREGATE BASE COURSE
P	PRIME COAT (0.35 GAL. PER SQ. YD.)
T	EARTH MATERIAL
U	EXISTING PAVEMENT

(ALL SLOPES 1H UNLESS NOTED)



TYPICAL SECTION NO. 1

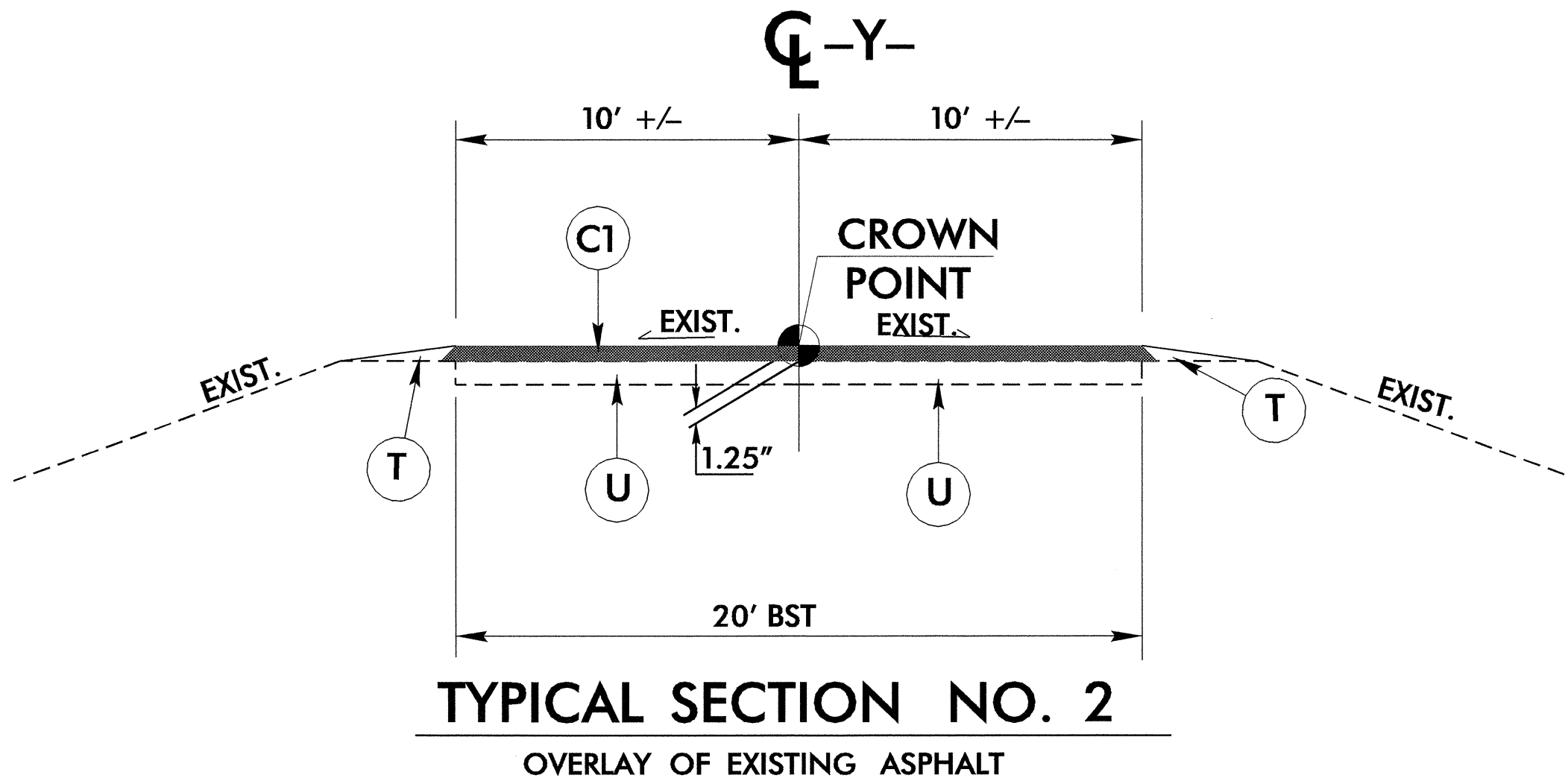
* 5' - 7' WITH GUARDRAIL
(SEE X-SECTIONS)

*NOTE: WHEN GUARDRAIL IS WARRANTED LEFT AND RIGHT OF -L-, THE MINIMUM OFFSET FROM THE EDGE OF THE TRAVEL LANE TO THE FACE OF THE GUARDRAIL IS 4'-0"

USE TYPICAL SECTION NO.1 AS FOLLOWS:

-L- 11+00 TO 15+15.00 (BEGIN BRIDGE)
-L- 15+67.00 (END BRIDGE) TO 20+26.43

NOTE: USE DITCH DETAIL A IN CONJUNCTION WITH TS NO. 1 -L- LT. 19+03 TO 20+00
USE DITCH DETAIL B IN CONJUNCTION WITH TS NO. 1 -L- RT. 12+00 TO 13+50
USE DITCH DETAIL C IN CONJUNCTION WITH TS NO. 1 -L- LT. 15+60 TO 17+03

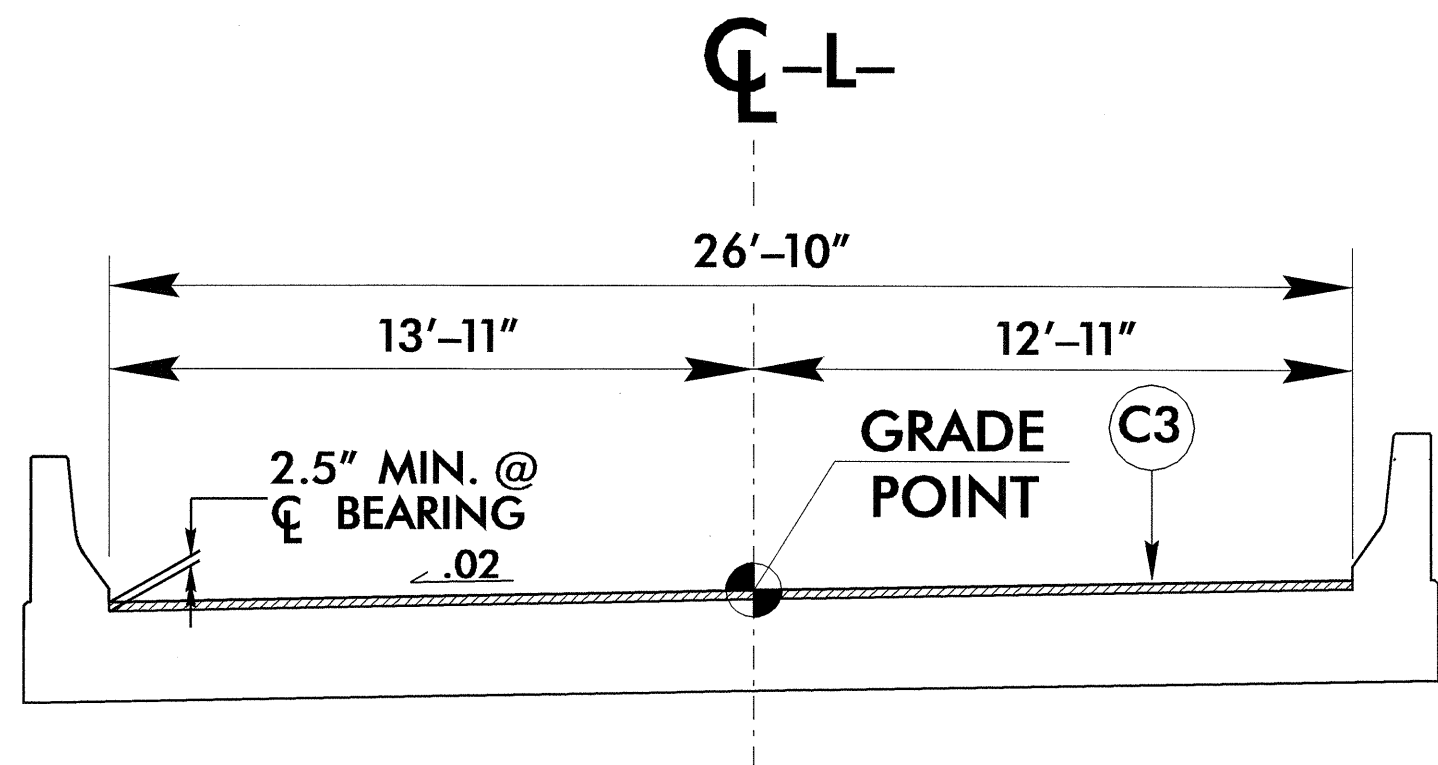


TYPICAL SECTION NO. 2

OVERLAY OF EXISTING ASPHALT

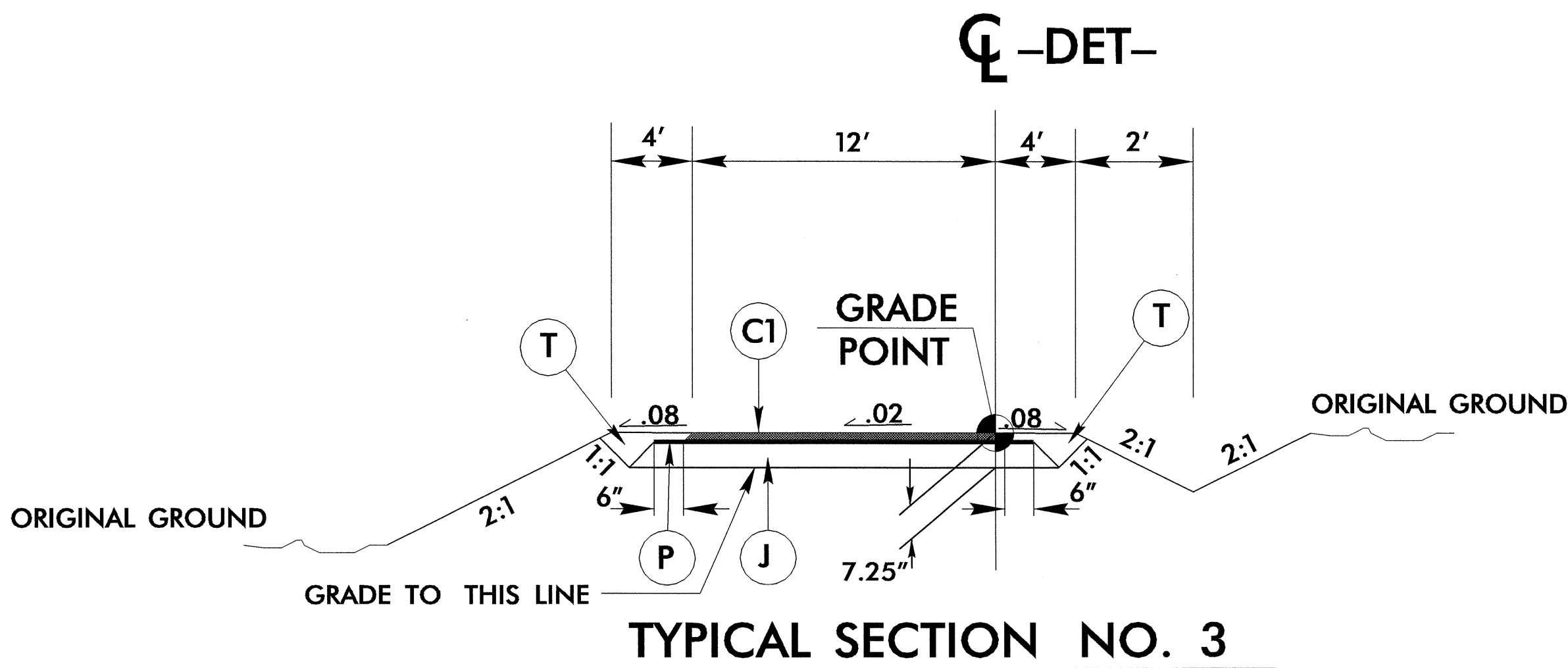
USE TYPICAL SECTION NO. 2 AS FOLLOWS:

-Y- 12+00.00 TO 15+00.00 (RESURFACE ONLY)



DETAIL OF CORED SLAB BRIDGE

-L- STA. 15+15.00 TO STA. 15+67.00



TYPICAL SECTION NO. 3

USE TYPICAL SECTION NO.3 AS FOLLOWS:

-DET- 10+00.00 TO 14+52.48

NOTE: USE DITCH DETAIL C IN CONJUNCTION WITH TS NO. 1 -DET- LT. 13+28 TO 14+52.48

PROJECT REFERENCE NO.	SHEET NO.
B-3670	2
ROADWAY DESIGN ENGINEER NORTH CAROLINA PROFESSIONAL SEAL 24912 KEVIN E. MOORE 9/16/04	PAVEMENT DESIGN ENGINEER NORTH CAROLINA PROFESSIONAL SEAL 22698 CLARK S. MORRISON 9/16/04

15 SEP-2004 14:11
C:\p01\85370\000
2460