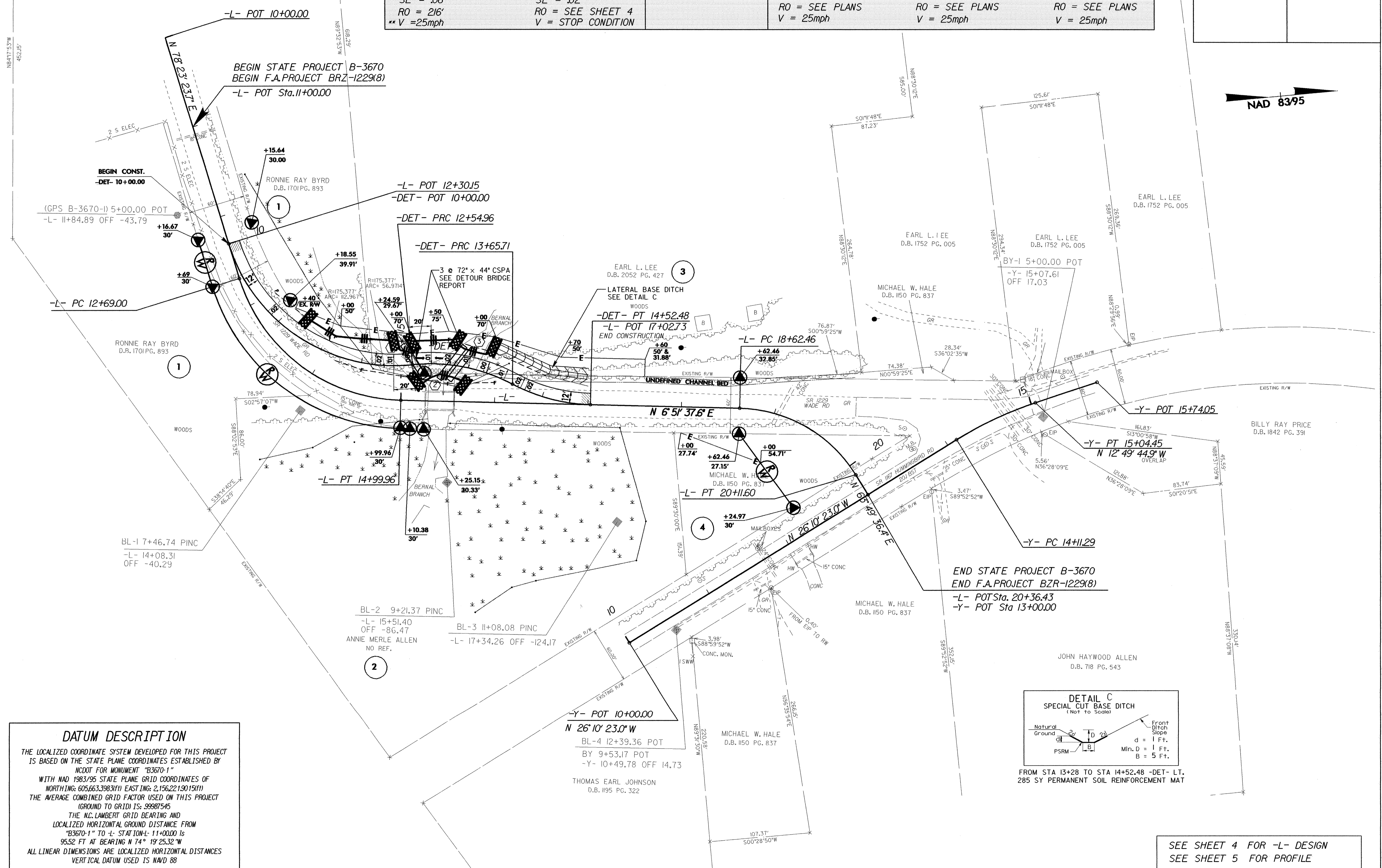
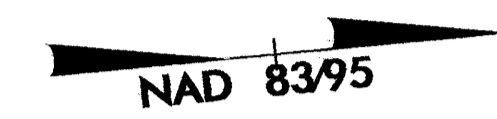


NOTE
TEMPORARY SILT FENCE SHALL BE INSTALLED A MINIMUM
OF 3 FEET FROM TOE OF FILL IN WETLAND AREAS

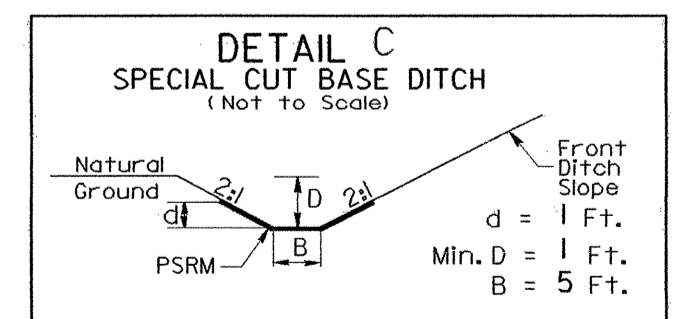
-L-		-Y- EXISTING		-DET-	
PI Sta 14+02.25	PI Sta 19+43.85	PI Sta 14+58.08	PI Sta 11+52.40	PI Sta 13+12.05	PI Sta 14+09.91
$\Delta = 71^{\circ} 31' 46.1''$ (LT)	$\Delta = 56^{\circ} 57' 58.8''$ (RT)	$\Delta = 13^{\circ} 20' 38.1''$ (RT)	$\Delta = 78^{\circ} 57' 27.3''$ (LT)	$\Delta = 34^{\circ} 18' 05.7''$ (RT)	$\Delta = 26^{\circ} 52' 16.2''$ (LT)
D = 30' 58" 14.5"	D = 38' 11" 49.9"	D = 14' 19" 26.2"	D = 30' 58" 14.5"	D = 30' 58" 14.5"	D = 30' 58" 14.5"
L = 230.96'	L = 149.14'	L = 93.16'	L = 254.94'	L = 110.76'	L = 86.76'
T = 133.25'	T = 81.39'	T = 46.79'	T = 152.39'	T = 57.09'	T = 44.19'
R = 185.00'	R = 150.00'	R = 400.00'	R = 185.00'	R = 185.00'	R = 185.00'
SE = .06	SE = .02		RO = SEE PLANS	RO = SEE PLANS	RO = SEE PLANS
RO = 216'	RO = SEE SHEET 4		V = 25mph	V = 25mph	V = 25mph
** V = 25mph	V = STOP CONDITION				

PROJECT REFERENCE NO. B-3670	SHEET NO. EC-6/CONST. 4-A
RW SHEET NO.	HYDRAULICS ENGINEER
ROADWAY DESIGN ENGINEER	



DATUM DESCRIPTION

THE LOCALIZED COORDINATE SYSTEM DEVELOPED FOR THIS PROJECT IS BASED ON THE STATE PLANE COORDINATES ESTABLISHED BY NCDOT FOR MONUMENT "B3670-1" WITH NAD 1983/95 STATE PLANE GRID COORDINATES OF NORTHING: 605663.3983(11) EASTING: 2,156221.9015(11) THE AVERAGE COMBINED GRID FACTOR USED ON THIS PROJECT (GROUND TO GRID) IS: 99887545 THE N.C. LAMBERT GRID BEARING AND LOCALIZED HORIZONTAL GROUND DISTANCE FROM "B3670-1" TO -L- STATION-L- 11+00.00 IS 95.52 FT AT BEARING N 74° 19' 25.32" W ALL LINEAR DIMENSIONS ARE LOCALIZED HORIZONTAL DISTANCES VERTICAL DATUM USED IS NAVD 88



FROM STA 13+28 TO STA 14+52.48 -DET- LT. 285 SY PERMANENT SOIL REINFORCEMENT MAT

SEE SHEET 4 FOR -L- DESIGN
SEE SHEET 5 FOR PROFILE