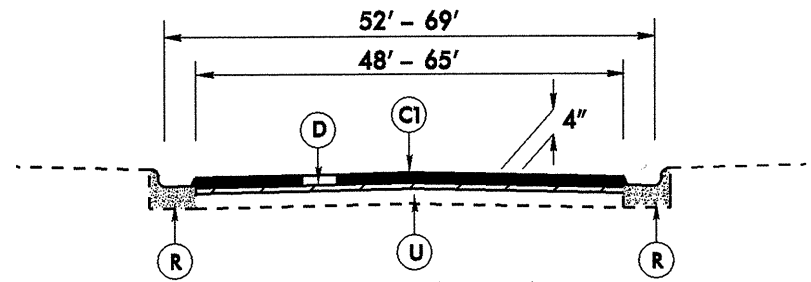
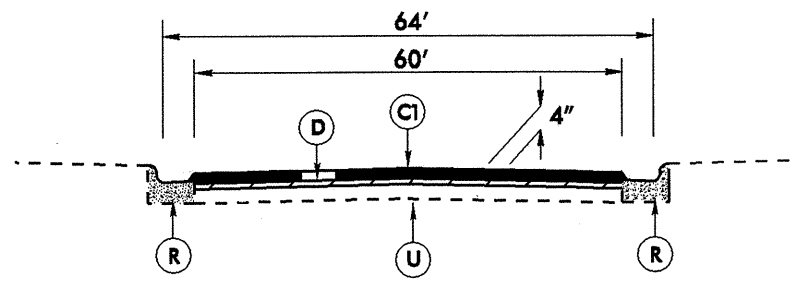


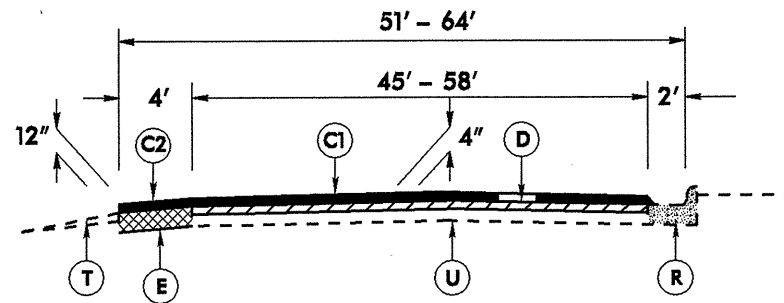
STATIONS START AT SR 4121 (HIGH POINT RD) AND INCREASE TOWARD MERRITT DRIVE (NON-SYSTEM)



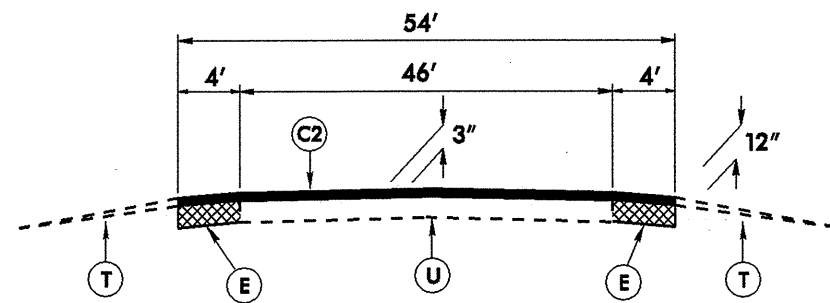
TYPICAL SECTION NO. 1
FROM STA. 0+00 TO STA. 41+33



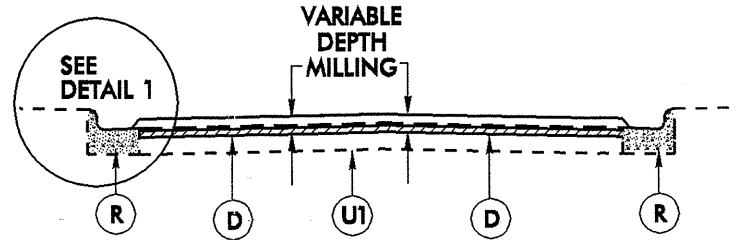
TYPICAL SECTION NO. 2
FROM STA. 41+33 TO STA. 47+33



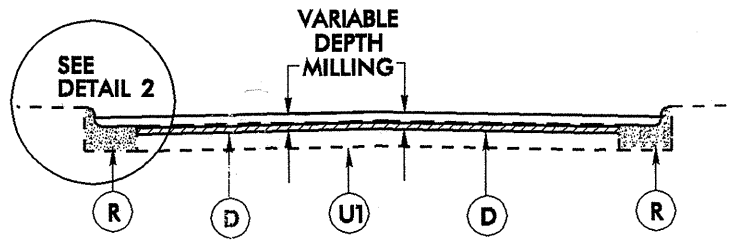
TYPICAL SECTION NO. 3
FROM STA. 47+33 TO STA. 71+73



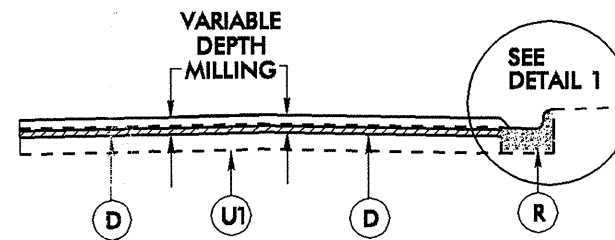
TYPICAL SECTION NO. 4
FROM STA. 71+73 TO STA. 72+80



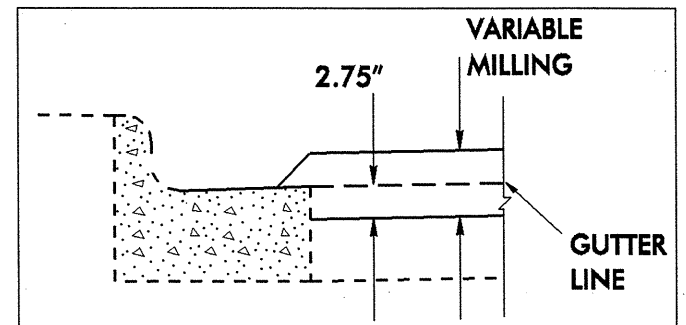
MILL EXISTING ASPHALT PAVEMENT AS SHOWN FOR ENTIRE TRAVELWAY TO BE USED IN CONJUNCTION WITH T.S. NO. 1 ON MAP NO. 1 FILL AS NOTED WITH D (INTERMEDIATE COURSE)
MILLING DETAIL 1



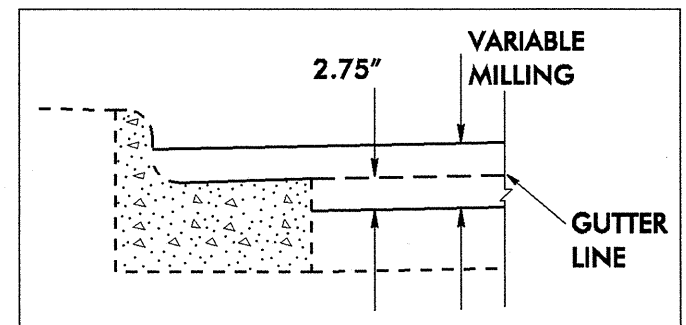
MILL EXISTING ASPHALT PAVEMENT AS SHOWN FOR ENTIRE TRAVELWAY TO BE USED IN CONJUNCTION WITH T.S. NO. 2 ON MAP NO. 1 FILL AS NOTED WITH D (INTERMEDIATE COURSE)
MILLING DETAIL 2



MILL EXISTING ASPHALT PAVEMENT AS SHOWN FOR ENTIRE TRAVELWAY TO BE USED IN CONJUNCTION WITH T.S. NO. 3 ON MAP NO. 1 FILL AS NOTED WITH D (INTERMEDIATE COURSE)
MILLING DETAIL 3



DETAIL 1



DETAIL 2

NOTE: D (INTERMEDIATE COURSE), FINAL SURFACE ELEVATION MUST BE 1/4" LOWER THAN THE GUTTER LINE.

PAVEMENT SCHEDULE	
C1	PROP. APPROX. 1.5" ASPHALT CONCRETE SURFACE COURSE, TYPE S9.5B, AT AN AVERAGE RATE OF 168 LBS. PER SQ. YD.
C2	PROP. APPROX. 3" ASPHALT CONCRETE SURFACE COURSE, TYPE S9.5B, AT AN AVERAGE RATE OF 168 LBS. PER SQ. YD. IN EACH OF TWO LAYERS
D	PROP. APPROX. 2.5" ASPHALT CONCRETE INTERMEDIATE COURSE, TYPE I19.0B, AT AN AVERAGE RATE OF 285 LBS. PER SQ. YD.
E	PROP. APPROX. 9" ASPHALT CONCRETE BASE COURSE, TYPE B25.0B, AT AN AVERAGE RATE OF 513 LBS. PER SQ. YD. IN EACH OF TWO LAYERS
R	2'-6" EXISTING CONCRETE CURB AND GUTTER
T	SHOULDER RECONSTRUCTION
U	EXISTING ASPHALT PAVEMENT