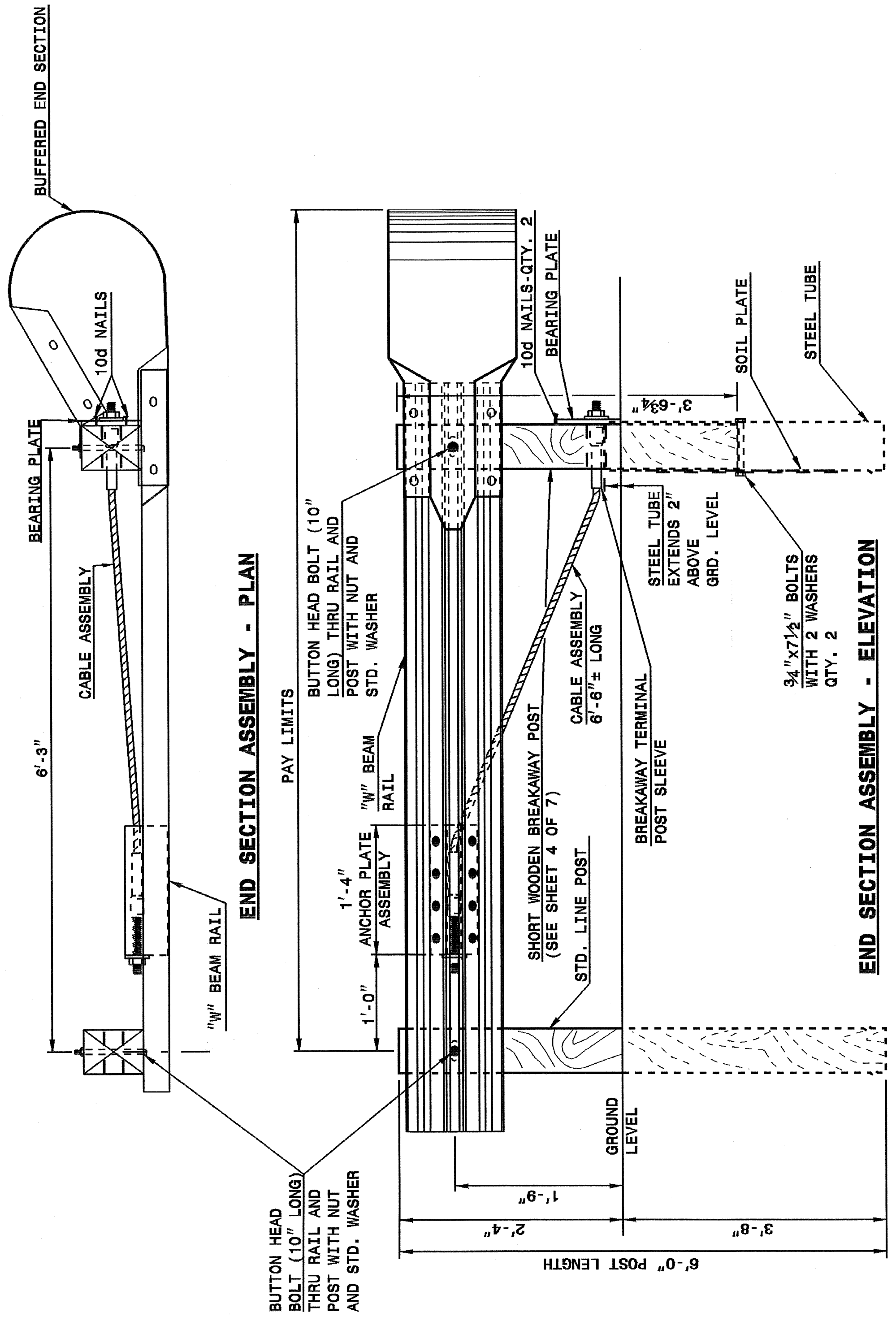


22-MAY-2003 13:39 W:\Special Details\ward\stds to Special Details\english\862d02\0862d02.dgn 5/14/99

STATE OF NORTH CAROLINA DEPT. OF TRANSPORTATION DIVISION OF HIGHWAYS RALEIGH, N.C.

STATE OF NORTH CAROLINA DEPT. OF TRANSPORTATION DIVISION OF HIGHWAYS RALEIGH, N.C.



END SECTION ASSEMBLY - PLAN

END SECTION ASSEMBLY - ELEVATION

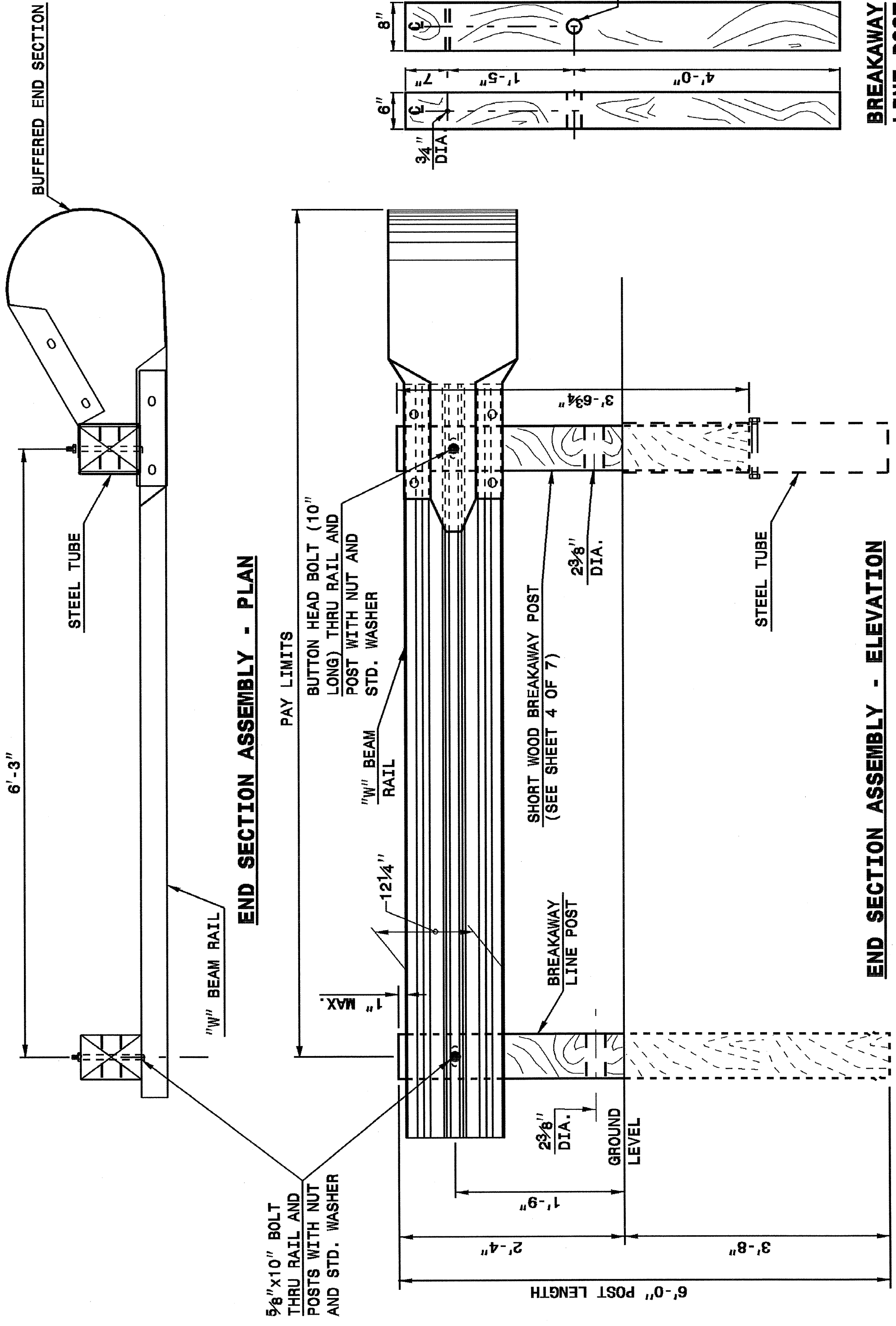
C.A.T.-1 SYSTEM

SHEET 1 OF 7 862D02

ENGLISH DETAIL DRAWING FOR GUARDRAIL INSTALLATION

STATE OF NORTH CAROLINA DEPT. OF TRANSPORTATION DIVISION OF HIGHWAYS RALEIGH, N.C.

STATE OF NORTH CAROLINA DEPT. OF TRANSPORTATION DIVISION OF HIGHWAYS RALEIGH, N.C.



END SECTION ASSEMBLY - PLAN

END SECTION ASSEMBLY - ELEVATION

A.T.-1 SYSTEM

SHEET 2 OF 7 862D02

ENGLISH DETAIL DRAWING FOR GUARDRAIL INSTALLATION

DESIGN SERVICES UNIT STANDARDS AND SPECIAL DESIGN Office 919-250-4128 FAX 919-250-4119

SEE PLATE FOR TITLE

ORIGINAL BY: 2002 STD. 862.02 DATE: MODIFIED BY: E.E. WARD DATE: 02-09-03 CHECKED BY: DATE: FILE SPEC.: usr/stds/02stdetail/english/862d02/862d02.dgn

