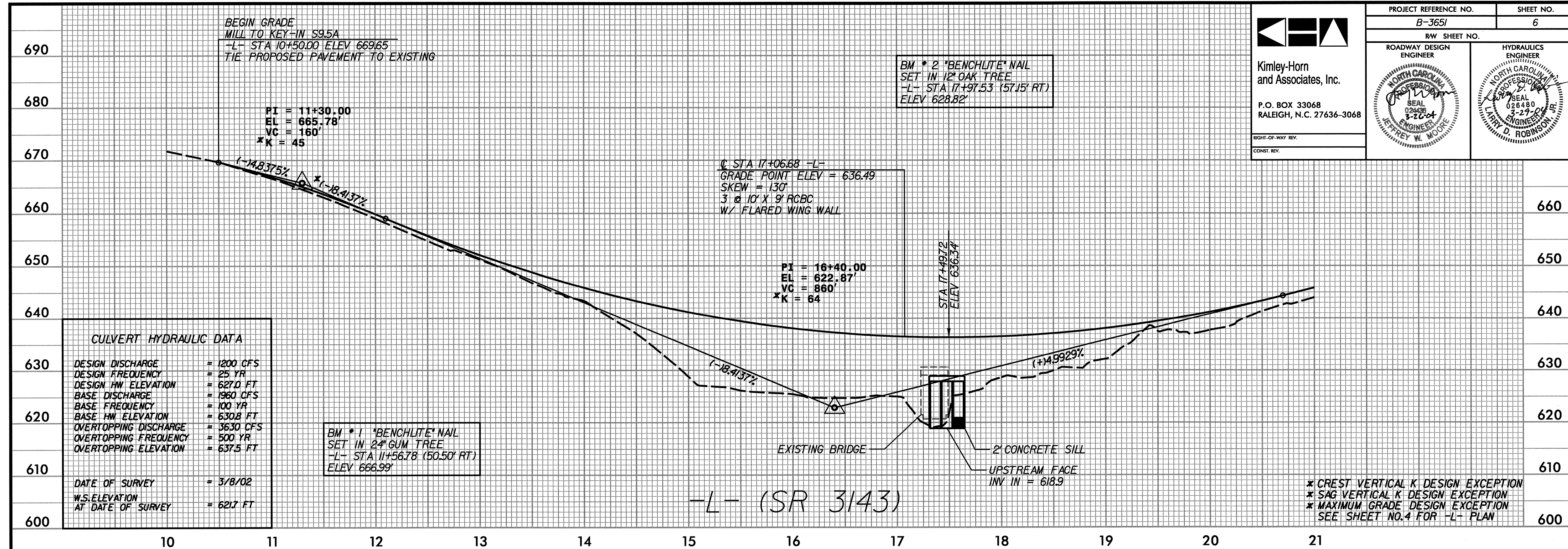


Kimley-Horn
and Associates, Inc.

P.O. BOX 33068
RALEIGH, N.C. 27636-3068

RIGHT-OF-WAY REV.
CONST. REV.

| | |
|---------------------------------|---------------------|
| PROJECT REFERENCE NO. B-3651 | SHEET NO. 6 |
| RW SHEET NO. | |
| ROADWAY DESIGN ENGINEER | HYDRAULICS ENGINEER |
| | |

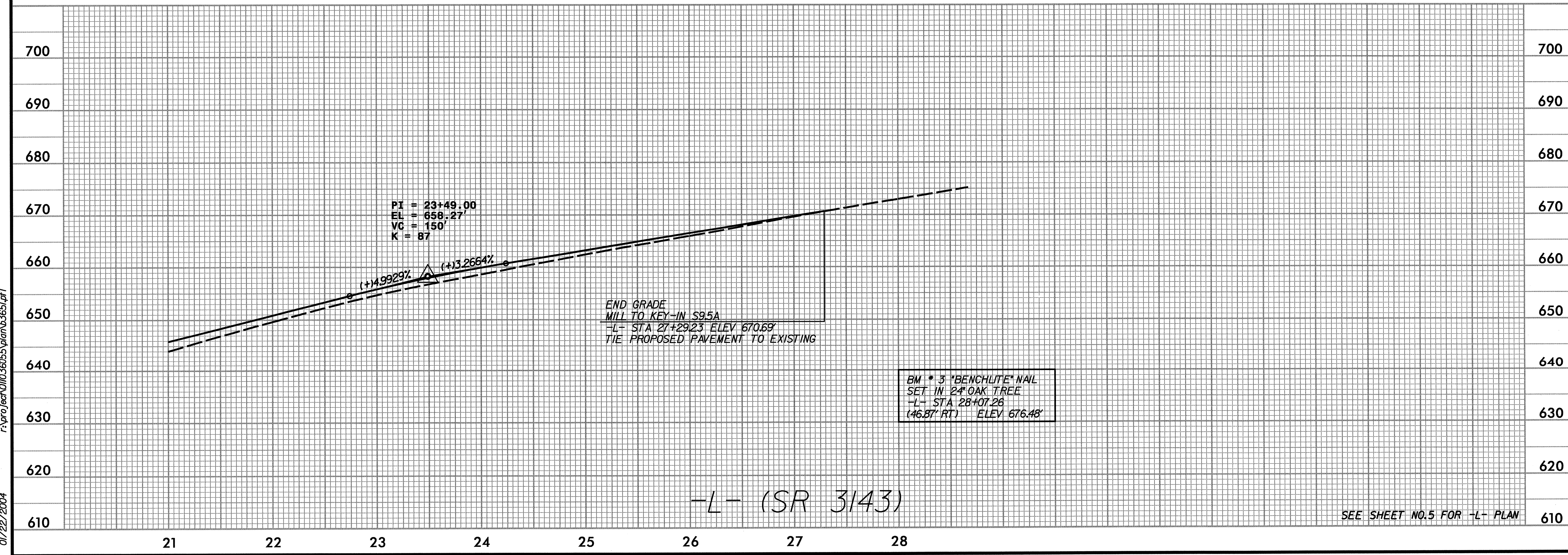


| CULVERT HYDRAULIC DATA | |
|----------------------------------|------------|
| DESIGN DISCHARGE | = 1200 CFS |
| DESIGN FREQUENCY | = 25 YR |
| DESIGN HW ELEVATION | = 627.0 FT |
| BASE DISCHARGE | = 1960 CFS |
| BASE FREQUENCY | = 100 YR |
| BASE HW ELEVATION | = 630.8 FT |
| OVERTOPPING DISCHARGE | = 3630 CFS |
| OVERTOPPING FREQUENCY | = 500 YR |
| OVERTOPPING ELEVATION | = 637.5 FT |
| DATE OF SURVEY | = 3/8/02 |
| W.S. ELEVATION AT DATE OF SURVEY | = 621.7 FT |

BM * 1 *BENCHLITE* NAIL
SET IN 24" GUM TREE
-L- STA 11+56.78 (50.50' RT)
ELEV 666.99

-L- (SR 3143)

* CREST VERTICAL K DESIGN EXCEPTION
* SAG VERTICAL K DESIGN EXCEPTION
* MAXIMUM GRADE DESIGN EXCEPTION
SEE SHEET NO. 4 FOR -L- PLAN



END GRADE
MILL TO KEY-IN S9.5A
-L- STA 27+29.23 ELEV 670.69
TIE PROPOSED PAVEMENT TO EXISTING

BM * 3 *BENCHLITE* NAIL
SET IN 24" OAK TREE
-L- STA 28+07.26
(46.87' RT) ELEV 676.48

-L- (SR 3143)

SEE SHEET NO. 5 FOR -L- PLAN

01/22/2004 r:\proj\act\11036055\plan\3651.plt