

PROJECT REFERENCE NO.	SHEET NO.
B-3651	EC-3/CONST.4
RW SHEET NO.	
ROADWAY DESIGN ENGINEER	HYDRAULICS ENGINEER

-L-
 PI Sta 11+95.12
 $\Delta = 1' 23' 57.1''$ (RT)
 $D = 5' 00' 00.0''$
 $L = 227.98'$
 $T = 114.37'$
 $R = 1,145.92'$
 $SE = 0.04$
 $RO = 120'$

TRAFFIC DIAGRAM

1999 ADT	WINTERSET DR (-Y1-)	DHV = 11%
2025 ADT		DIR = 65%
		TTST = 1%
		DUAL = 2%

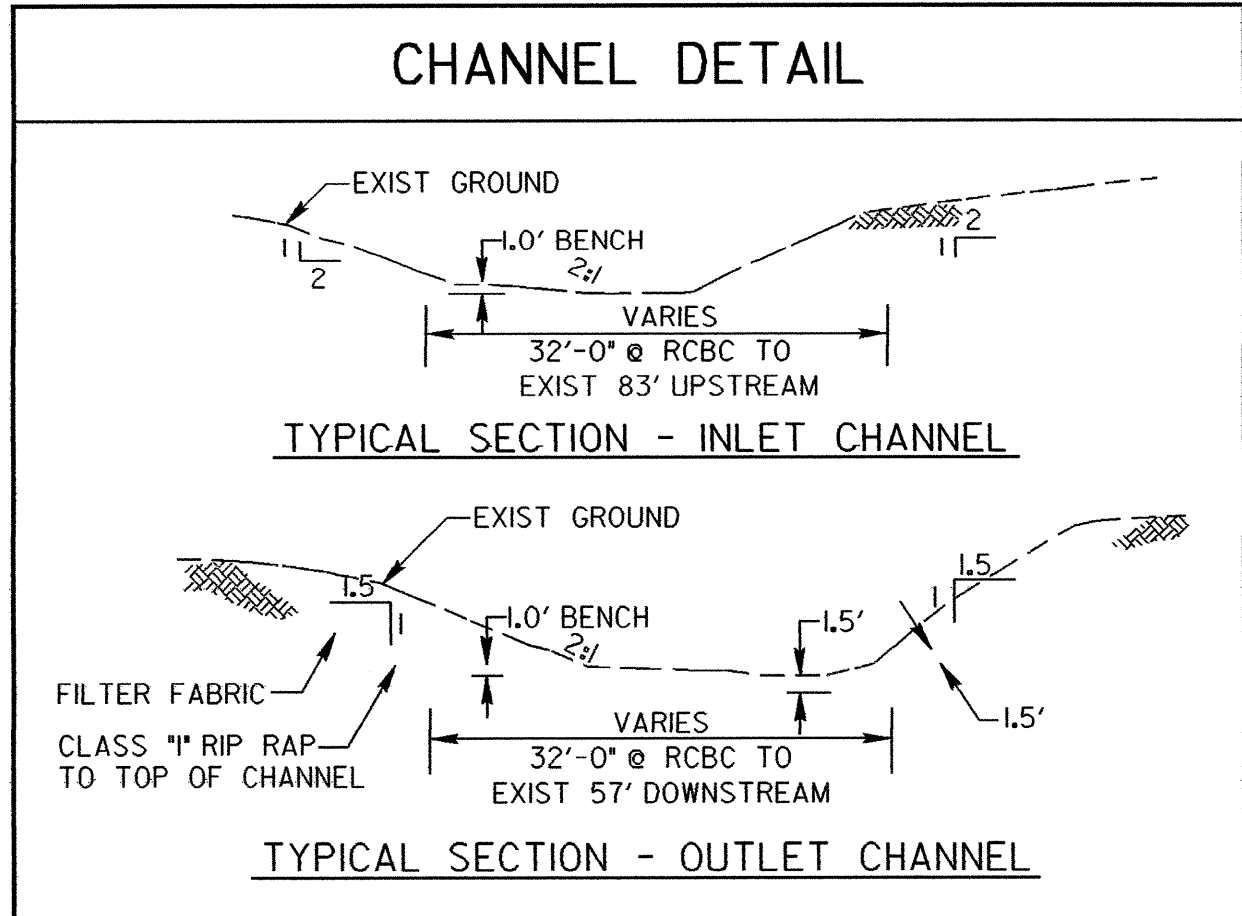
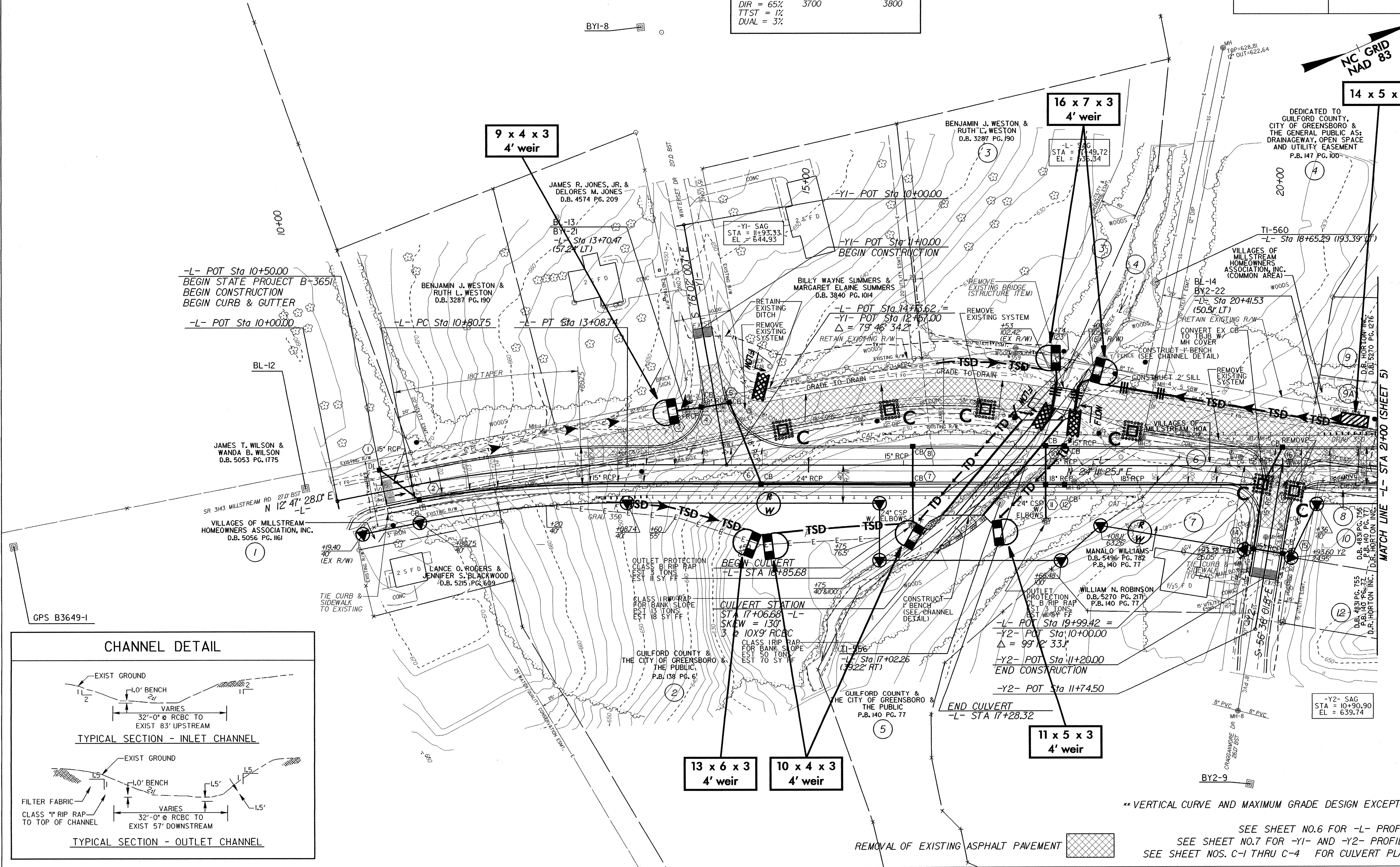
SR 3143 (-L-)	1500	1500
	3700	3800

DHV = 11%
 DIR = 65%
 TTST = 1%
 DUAL = 3%

NOTE:
 PLACE TEMPORARY ROCK SEDIMENT DAMS TYPE-B AND TEMPORARY ROCK SILT CHECKS TYPE-A AT DRAINAGE OUTLETS.

CLEARING AND GRUBBING EROSION CONTROL FOR CONSTRUCTION SHEET 4

NC GRID NAD 83



REMOVAL OF EXISTING ASPHALT PAVEMENT

** VERTICAL CURVE AND MAXIMUM GRADE DESIGN EXCEPTION

SEE SHEET NO.6 FOR -L- PROFILE
 SEE SHEET NO.7 FOR -Y1- AND -Y2- PROFILES
 SEE SHEET NOS. C-1 THRU C-4 FOR CULVERT PLANS

MATCH LINE -L- STA 21+00 (SHEET 5)