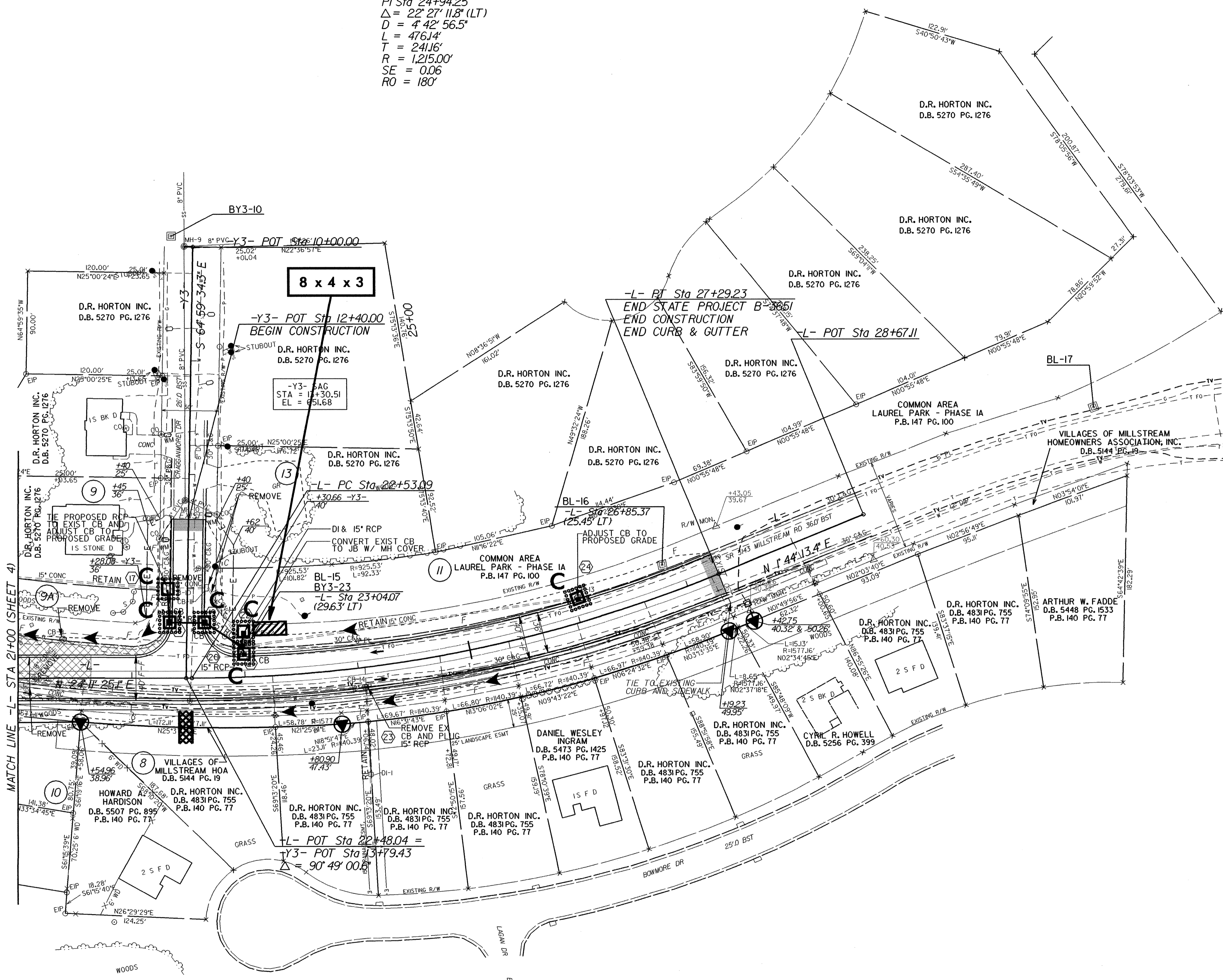


PROJECT REFERENCE NO.		SHEET NO.	
B-3651		EC-7/CONST.5	
RW SHEET NO.			
ROADWAY DESIGN ENGINEER		HYDRAULICS ENGINEER	



-L-
 PI Sta 24+94.25
 $\Delta = 22^\circ 27' 11.8''$ (LT)
 $D = 4' 42'' 56.5''$
 $L = 476.14'$
 $T = 241.16'$
 $R = 1,215.00'$
 $SE = 0.06$
 $RO = 180'$



REMOVAL OF EXISTING ASPHALT PAVEMENT

** VERTICAL CURVE AND MAXIMUM GRADE DESIGN EXCEPTION

SEE SHEET NO.6 FOR -L- PROFILE
 SEE SHEET NO.7 FOR -Y3- PROFILE