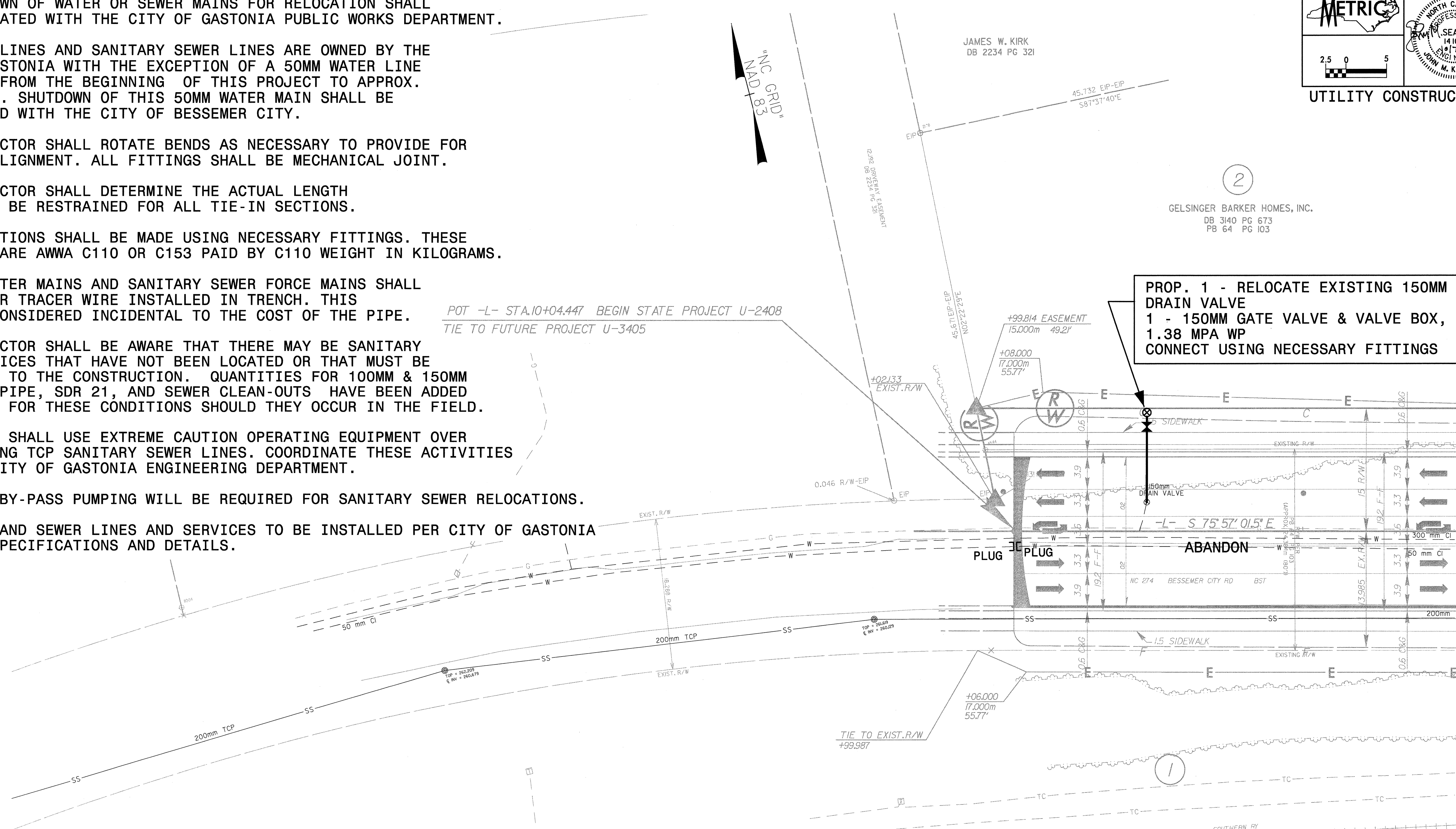


GENERAL NOTES:

1. THE SHUTDOWN OF WATER OR SEWER MAINS FOR RELOCATION SHALL BE COORDINATED WITH THE CITY OF GASTONIA PUBLIC WORKS DEPARTMENT.
2. ALL WATER LINES AND SANITARY SEWER LINES ARE OWNED BY THE CITY OF GASTONIA WITH THE EXCEPTION OF A 50MM WATER LINE THAT RUNS FROM THE BEGINNING OF THIS PROJECT TO APPROX. STA. 12+40. SHUTDOWN OF THIS 50MM WATER MAIN SHALL BE COORDINATED WITH THE CITY OF BESSEMER CITY.
2. THE CONTRACTOR SHALL ROTATE BENDS AS NECESSARY TO PROVIDE FOR VERTICAL ALIGNMENT. ALL FITTINGS SHALL BE MECHANICAL JOINT.
3. THE CONTRACTOR SHALL DETERMINE THE ACTUAL LENGTH OF PIPE TO BE RESTRAINED FOR ALL TIE-IN SECTIONS.
4. ALL CONNECTIONS SHALL BE MADE USING NECESSARY FITTINGS. THESE FITTINGS ARE AWWA C110 OR C153 PAID BY C110 WEIGHT IN KILOGRAMS.
5. ALL PVC WATER MAINS AND SANITARY SEWER FORCE MAINS SHALL HAVE COPPER TRACER WIRE INSTALLED IN TRENCH. THIS SHALL BE CONSIDERED INCIDENTAL TO THE COST OF THE PIPE.
6. THE CONTRACTOR SHALL BE AWARE THAT THERE MAY BE SANITARY SEWER SERVICES THAT HAVE NOT BEEN LOCATED OR THAT MUST BE RELAID DUE TO THE CONSTRUCTION. QUANTITIES FOR 100MM & 150MM PVC SEWER PIPE, SDR 21, AND SEWER CLEAN-OUTS HAVE BEEN ADDED TO ACCOUNT FOR THESE CONDITIONS SHOULD THEY OCCUR IN THE FIELD.
7. CONTRACTOR SHALL USE EXTREME CAUTION OPERATING EQUIPMENT OVER THE EXISTING TCP SANITARY SEWER LINES. COORDINATE THESE ACTIVITIES WITH THE CITY OF GASTONIA ENGINEERING DEPARTMENT.
8. TEMPORARY BY-PASS PUMPING WILL BE REQUIRED FOR SANITARY SEWER RELOCATIONS.
9. ALL WATER AND SEWER LINES AND SERVICES TO BE INSTALLED PER CITY OF GASTONIA STANDARD SPECIFICATIONS AND DETAILS.

POT -L- STA.10+04.447 BEGIN STATE PROJECT U-2408
TIE TO FUTURE PROJECT U-3405



PROP. 1 - RELOCATE EXISTING 150MM DRAIN VALVE
1 - 150MM GATE VALVE & VALVE BOX, 1.38 MPA WP
CONNECT USING NECESSARY FITTINGS

DATUM DESCRIPTION
 THE LOCALIZED COORDINATE SYSTEM DEVELOPED FOR THIS PROJECT IS BASED ON THE STATE PLANE COORDINATES ESTABLISHED BY NCDOT FOR MONUMENT "U2408-4"
 WITH NAD 83 STATE PLANE GRID COORDINATES OF
 NORTHING: 171660798(m) EASTING: 406739240(m)
 THE AVERAGE COMBINED GRID FACTOR USED ON THIS PROJECT (GROUND TO GRID) IS: 0.999838033
 THE N.C. LAMBERT GRID BEARING AND LOCALIZED HORIZONTAL GROUND DISTANCE FROM "U2408-4" TO -L- STATION 10+04.447 IS
2,117.706m BEARING N 50° 28' 54.3" W
 ALL LINEAR DIMENSIONS ARE LOCALIZED HORIZONTAL DISTANCES
 VERTICAL DATUM USED IS NGVD 29

GASTONIA CORPORATE LIMITS (PB 39 PG 6)
 (LIMITS = CENTERLINE OF EXISTING TRACK)
 CROWDERS MOUNTAIN TOWNSHIP

PROJECT REFERENCE NO. U-2408	SHEET NO. UC-2
METRIC	PROFESSIONAL SEAL 14101 1971 JOHN M. KAMPPITT
2.5 0 5	UTILITY CONSTRUCTION

Prepared In the Office of:
EARTH TECH
 701 Corporate Center Drive, Suite 475
 Raleigh, NC 27607
 (919) 854-6200 - (919) 854-6259(FAX)

MATCHLINE -L- STA 10+60 SHEET UC-3