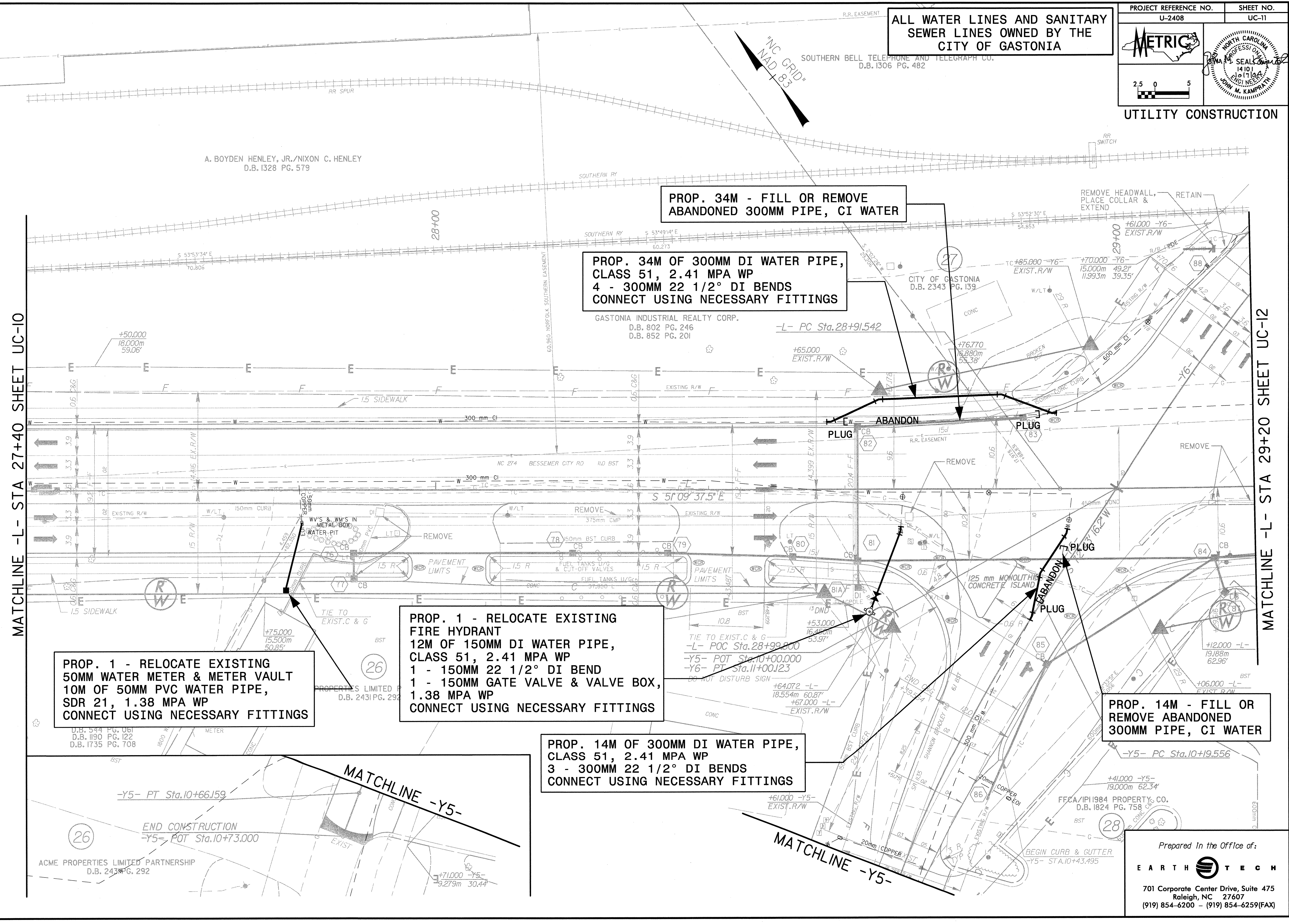
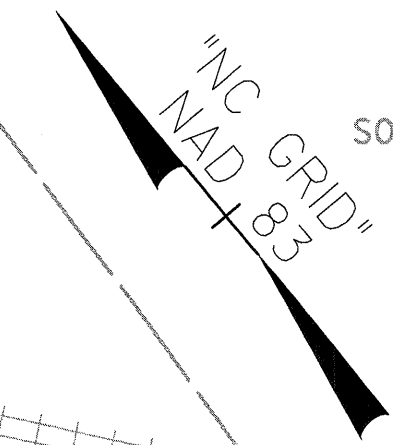


ALL WATER LINES AND SANITARY SEWER LINES OWNED BY THE CITY OF GASTONIA



PROP. 34M - FILL OR REMOVE ABANDONED 300MM PIPE, CI WATER

PROP. 34M OF 300MM DI WATER PIPE, CLASS 51, 2.41 MPA WP
4 - 300MM 22 1/2° DI BENDS
CONNECT USING NECESSARY FITTINGS

PROP. 1 - RELOCATE EXISTING 50MM WATER METER & METER VAULT
10M OF 50MM PVC WATER PIPE, SDR 21, 1.38 MPA WP
CONNECT USING NECESSARY FITTINGS

PROP. 1 - RELOCATE EXISTING FIRE HYDRANT
12M OF 150MM DI WATER PIPE, CLASS 51, 2.41 MPA WP
1 - 150MM 22 1/2° DI BEND
1 - 150MM GATE VALVE & VALVE BOX, 1.38 MPA WP
CONNECT USING NECESSARY FITTINGS

PROP. 14M OF 300MM DI WATER PIPE, CLASS 51, 2.41 MPA WP
3 - 300MM 22 1/2° DI BENDS
CONNECT USING NECESSARY FITTINGS

PROP. 14M - FILL OR REMOVE ABANDONED 300MM PIPE, CI WATER

MATCHLINE -L- STA 27+40 SHEET UC-10

MATCHLINE -L- STA 29+20 SHEET UC-12

-Y5- PT Sta.10+66.159

END CONSTRUCTION
-Y5- POT Sta.10+73.000

ACME PROPERTIES LIMITED PARTNERSHIP
D.B. 243 PG. 292

G:\76645\roadway\proj\UC-11\UC-11.dwg
 11:43:13 AM
 01/17/2004