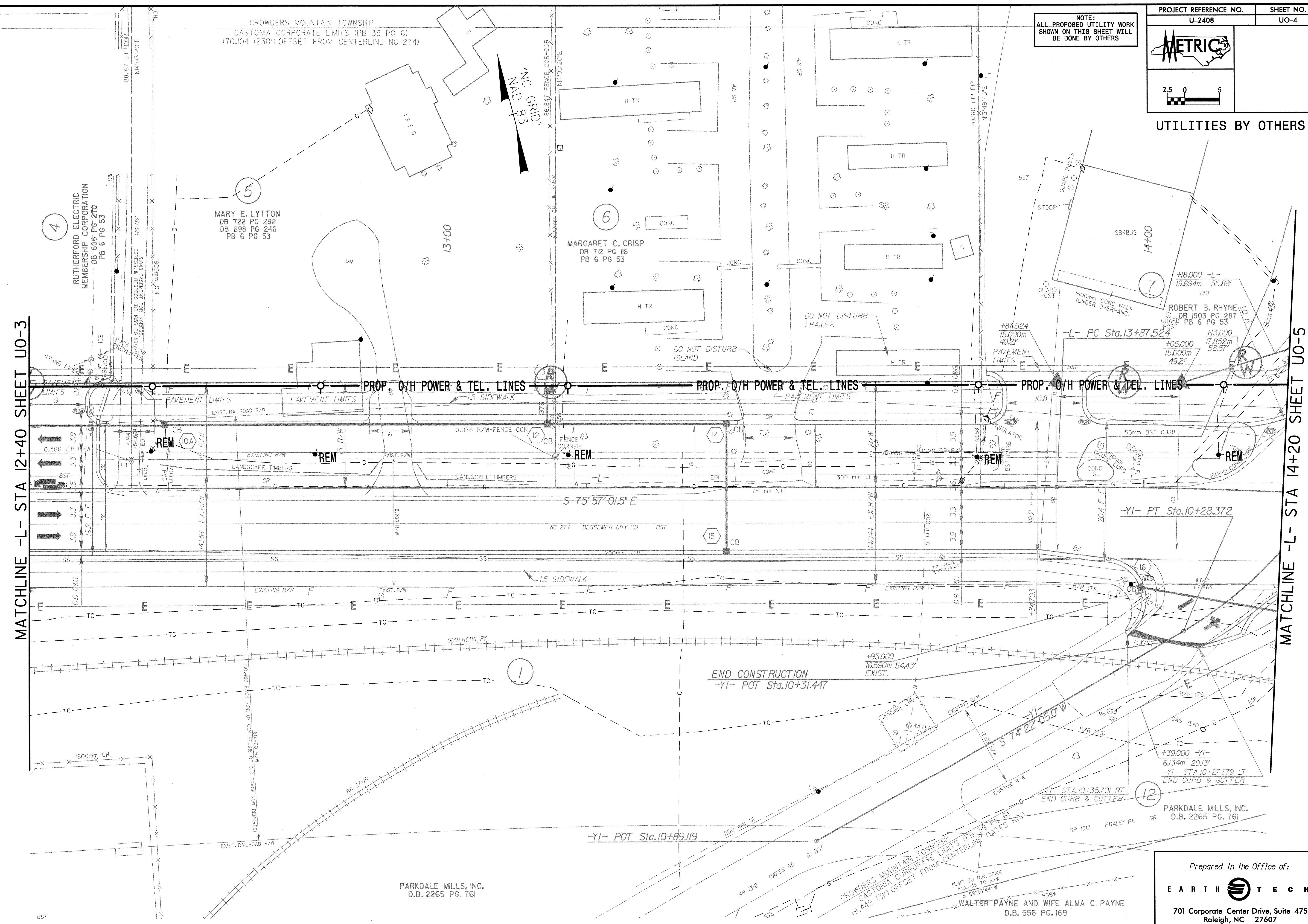


NOTE:  
ALL PROPOSED UTILITY WORK  
SHOWN ON THIS SHEET WILL  
BE DONE BY OTHERS

UTILITIES BY OTHERS



MATCHLINE -L- STA 12+40 SHEET UO-3

MATCHLINE -L- STA 14+20 SHEET UO-5

PARKDALE MILLS, INC.  
D.B. 2265 PG. 761

CROWDERS MOUNTAIN TOWNSHIP  
GASTONIA CORPORATE LIMITS (PB 39 PG 6)  
(19.449 (31') OFFSET FROM CENTERLINE DATES RD.)

WALTER PAYNE AND WIFE ALMA C. PAYNE  
D.B. 558 PG. 169

Prepared in the Office of:

**EARTH TECH**

701 Corporate Center Drive, Suite 475  
Raleigh, NC 27607  
(919) 854-6200 - (919) 854-6259(FAX)

65.76845\ccocway\pco\1\2408\UO-4.dwg  
05/17/2004 10:02:58 AM