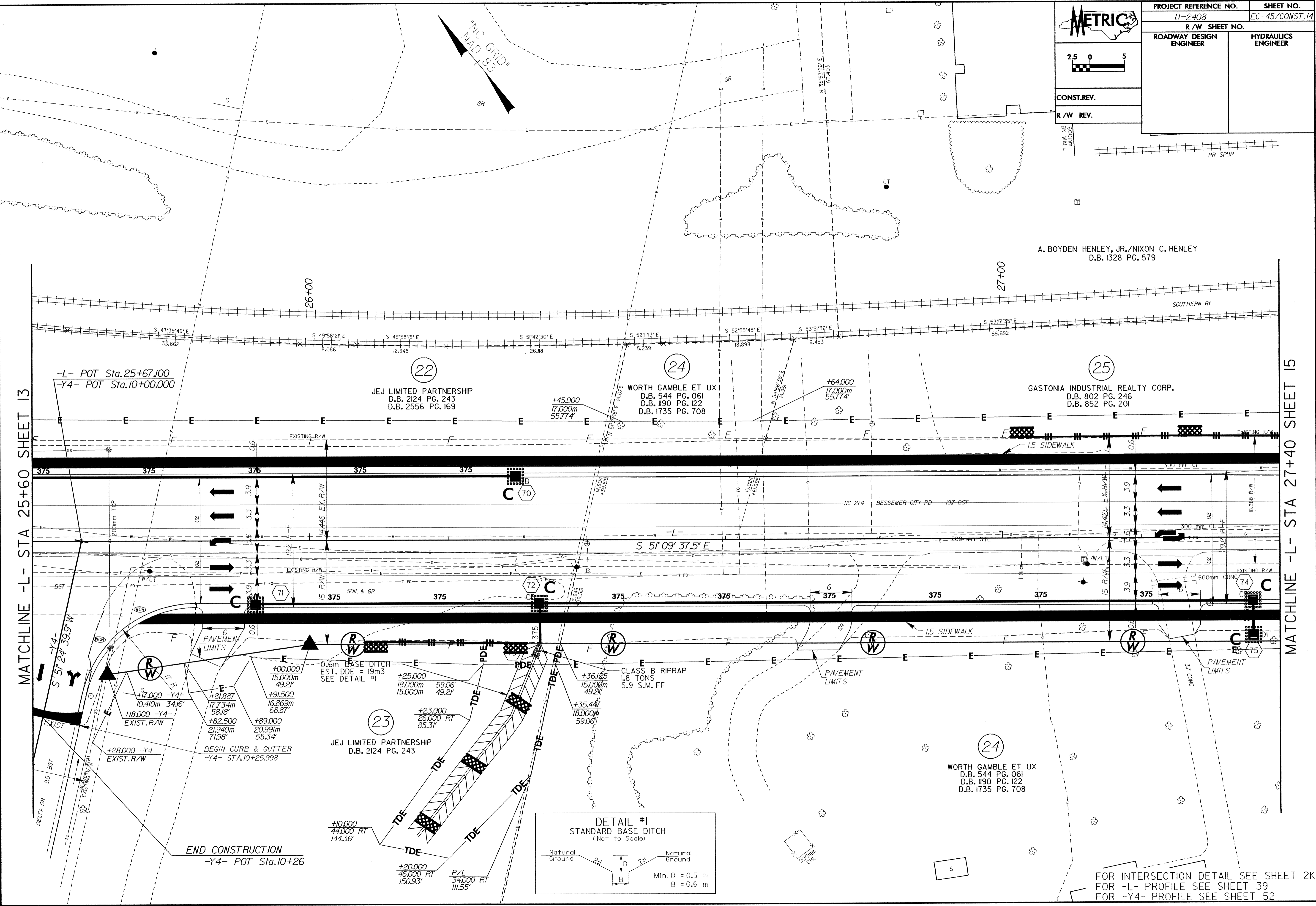
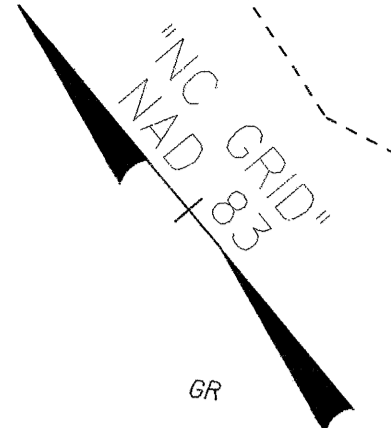


2.5 0 5

CONST.REV.

R/W REV.

PROJECT REFERENCE NO. U-2408	SHEET NO. EC-45/CONST.14
R/W SHEET NO.	
ROADWAY DESIGN ENGINEER	HYDRAULICS ENGINEER



MATCHLINE -L- STA 25+60 SHEET 13

MATCHLINE -L- STA 27+40 SHEET 15

A. BOYDEN HENLEY, JR./NIXON C. HENLEY
D.B. 1328 PG. 579

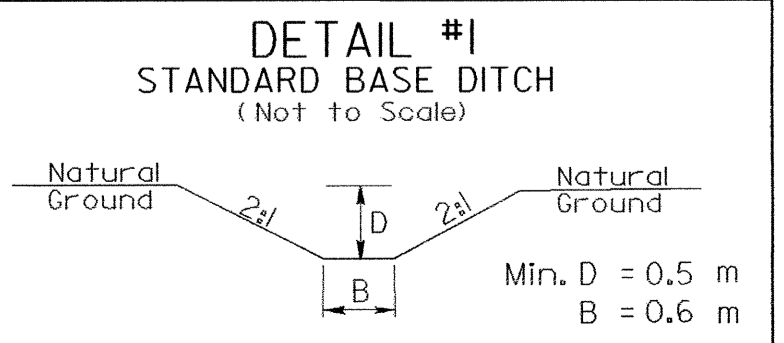
JEJ LIMITED PARTNERSHIP
D.B. 2124 PG. 243
D.B. 2556 PG. 169

WORTH GAMBLE ET UX
D.B. 544 PG. 061
D.B. 1190 PG. 122
D.B. 1735 PG. 708

GASTONIA INDUSTRIAL REALTY CORP.
D.B. 802 PG. 246
D.B. 852 PG. 201

JEJ LIMITED PARTNERSHIP
D.B. 2124 PG. 243

WORTH GAMBLE ET UX
D.B. 544 PG. 061
D.B. 1190 PG. 122
D.B. 1735 PG. 708



END CONSTRUCTION
-Y4- POT Sta.10+26

FOR INTERSECTION DETAIL SEE SHEET 2K
FOR -L- PROFILE SEE SHEET 39
FOR -Y4- PROFILE SEE SHEET 52