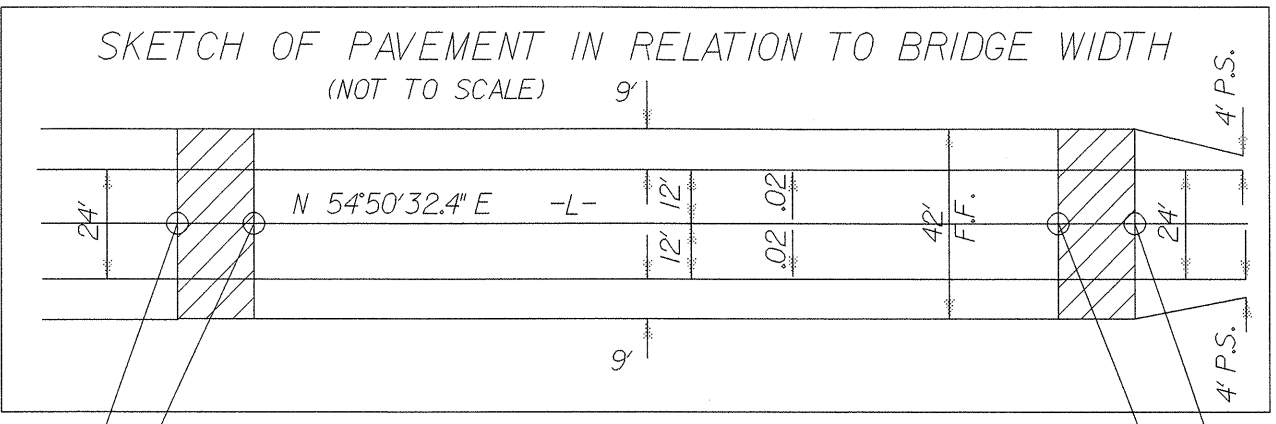
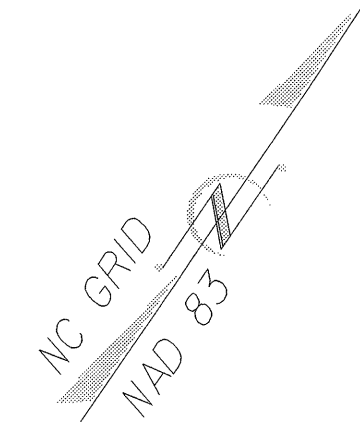
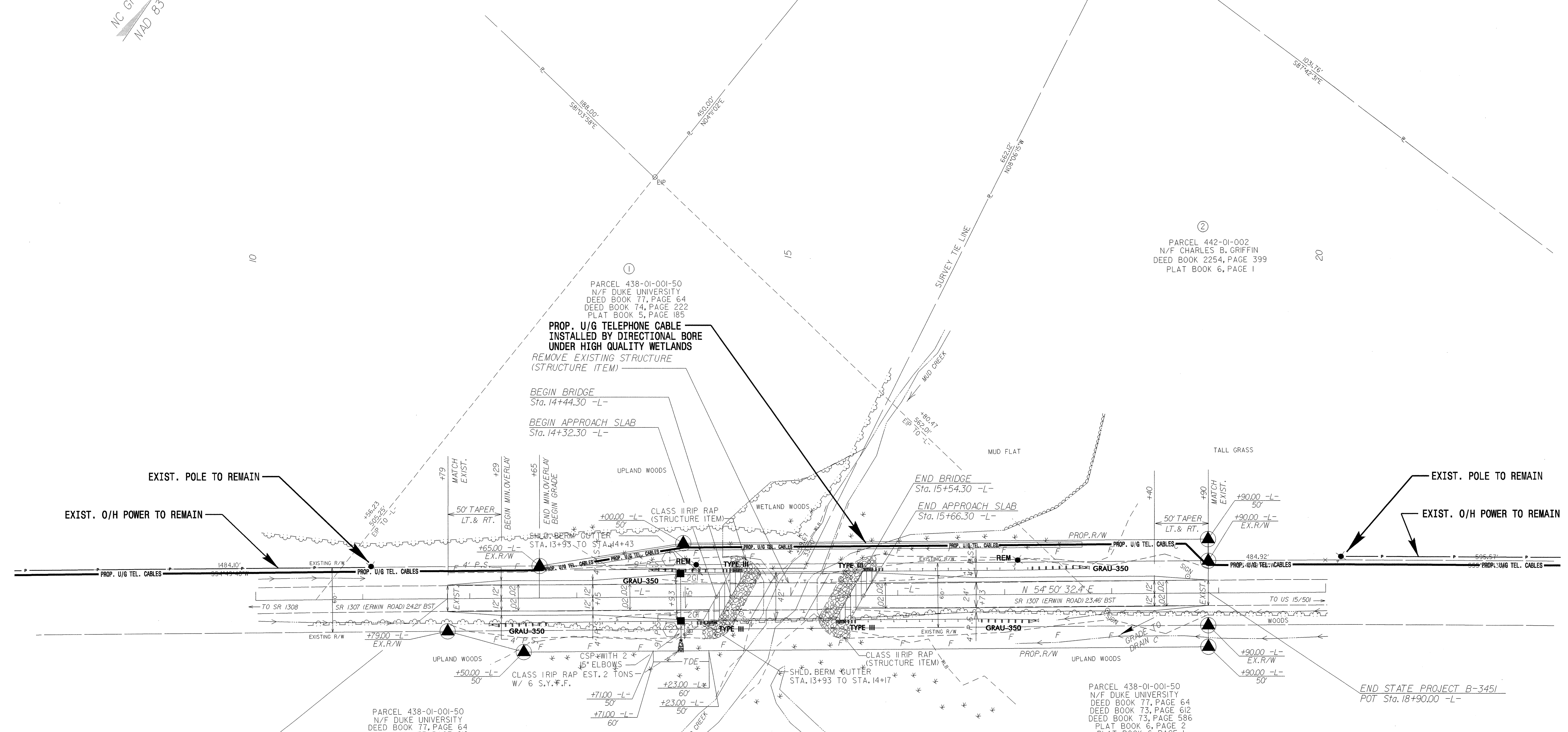


### UTILITIES BY OTHERS

**NOTE:**  
ALL PROPOSED UTILITY WORK SHOWN ON THIS SHEET WILL BE DONE BY OTHERS



BEGIN APPROACH SLAB Sta. 14+32.30 -L-  
 END APPROACH SLAB Sta. 15+66.30 -L-  
 BEGIN BRIDGE Sta. 14+44.30 -L-  
 END BRIDGE Sta. 15+54.30 -L-



EXIST. POLE TO REMAIN  
 EXIST. O/H POWER TO REMAIN

EXIST. POLE TO REMAIN  
 EXIST. O/H POWER TO REMAIN

PARCEL 438-01-001-50  
 N/F DUKE UNIVERSITY  
 DEED BOOK 77, PAGE 64  
 DEED BOOK 74, PAGE 222  
 PLAT BOOK 5, PAGE 185

PARCEL 442-01-002  
 N/F CHARLES B. GRIFFIN  
 DEED BOOK 2254, PAGE 399  
 PLAT BOOK 6, PAGE 1

PARCEL 438-01-001-50  
 N/F DUKE UNIVERSITY  
 DEED BOOK 77, PAGE 64  
 DEED BOOK 73, PAGE 612  
 DEED BOOK 73, PAGE 586  
 PLAT BOOK 6, PAGE 2  
 PLAT BOOK 6, PAGE 1

PARCEL 438-01-001-50  
 N/F DUKE UNIVERSITY  
 DEED BOOK 77, PAGE 64  
 DEED BOOK 73, PAGE 612  
 DEED BOOK 73, PAGE 586  
 PLAT BOOK 6, PAGE 2  
 PLAT BOOK 6, PAGE 1

BEGIN STATE PROJECT B-3451  
 POT Sta. 11+79.00 -L-

END STATE PROJECT B-3451  
 POT Sta. 18+90.00 -L-

DENOTES APPROACH SLAB

NOTES:  
 1. SEE SHEETS S-1 THRU S-? FOR STRUCTURE PLANS.  
 2. SEE SHEET 5 FOR GRADE AND PROFILE.

**DATUM DESCRIPTION**  
 THE LOCALIZED COORDINATE SYSTEM DEVELOPED FOR THIS PROJECT IS BASED ON THE STATE PLANE COORDINATES ESTABLISHED BY NCDOT FOR MONUMENT "B3451-1"  
 WITH NAD 1983/95 STATE PLANE GRID COORDINATES OF NORTHING: 818,126.5626(ft) EASTING: 2,009,213.3044(ft)  
 THE AVERAGE COMBINED GRID FACTOR USED ON THIS PROJECT (GROUND TO GRID) IS: 0.999994774  
 THE N.C. LAMBERT GRID BEARING AND LOCALIZED HORIZONTAL GROUND DISTANCE FROM "B3451-1" TO -L- STATION 11+79.00 IS S 52°39'18" W, 859.88'  
 ALL LINEAR DIMENSIONS ARE LOCALIZED HORIZONTAL DISTANCES  
 VERTICAL DATUM USED IS NAVD 88

8/17/99  
 05-AUG-2003 14:47  
 R:\U001\003\RA\U001\U001\B3451\4\_U002...rt..PSH.dgn  
 10521453