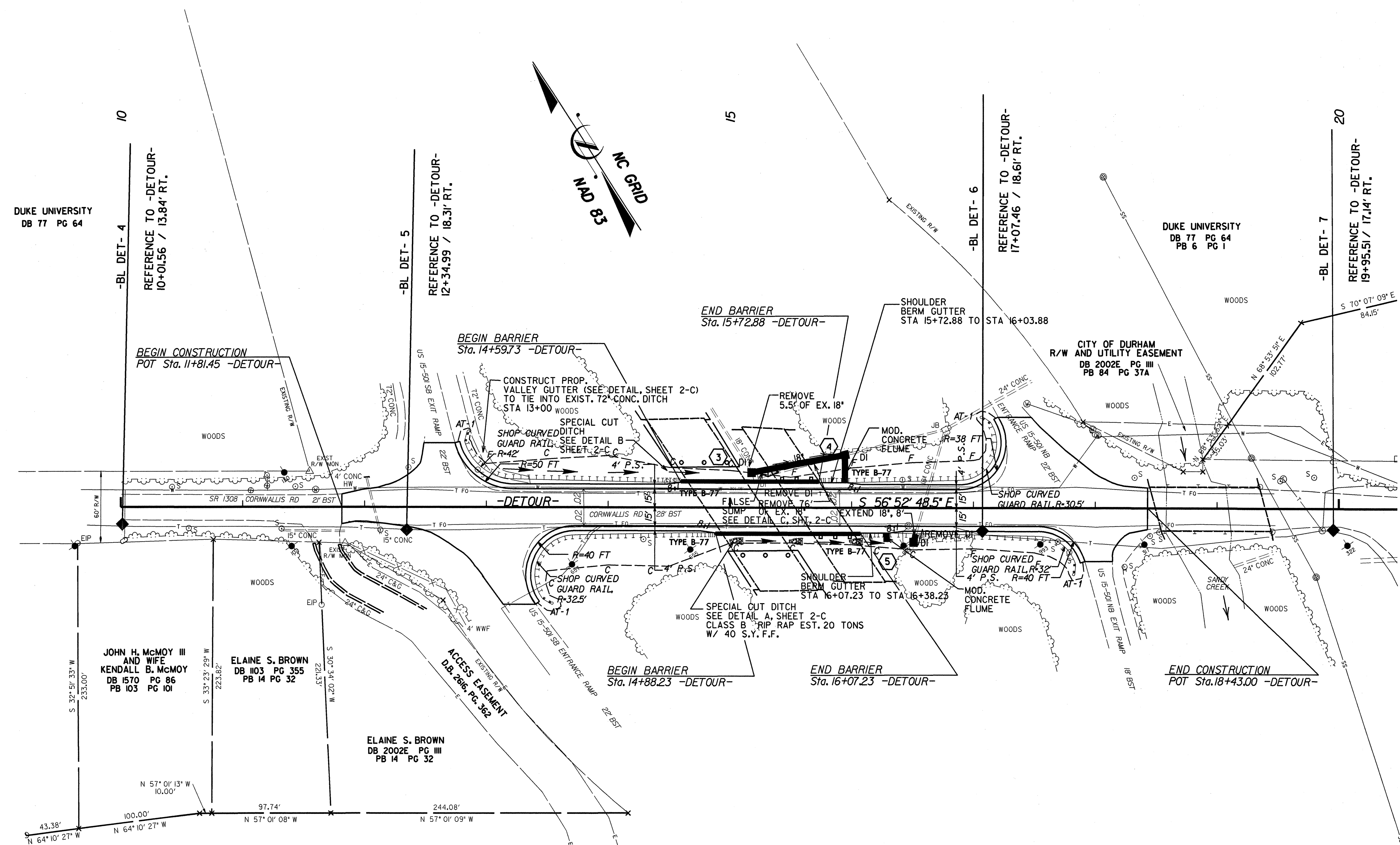




KCI Associates
of North Carolina, P.A.
RALEIGH OFFICE
ENGINEERS • PLANNERS • ECOLOGISTS

SUITE 220, LANDMARK CENTER II
460 SIX FORKS RD.
RALEIGH, N.C. 27609-5210
(919) 783-9214

PROJECT REFERENCE NO. B-3451	SHEET NO. 2-B
RW SHEET NO.	
ROADWAY DESIGN ENGINEER	HYDRAULICS ENGINEER



REVISIONS

NOTES:
1. SEE SHEET 6 FOR -DETOUR- GRADE & PROFILE.
2. DESIGN EXCEPTION FOR SHOULDER WIDTH REQUIRED.

DATUM DESCRIPTION
THE LOCALIZED COORDINATE SYSTEM DEVELOPED FOR THIS PROJECT IS BASED ON THE STATE PLANE COORDINATES ESTABLISHED BY NCDOT FOR MONUMENT "B3451-1" WITH NAD 1983/95 STATE PLANE GRID COORDINATES OF NORTHING: 818,126,562.5(1) EASTING: 2,009,213,304.4(1) THE AVERAGE COMBINED GRID FACTOR USED ON THIS PROJECT (GROUND TO GRID) IS: 0.9999474 THE N.C. LAMBERT GRID BEARING AND LOCALIZED HORIZONTAL GROUND DISTANCE FROM "B3451-1" TO -DETOUR- STATION 11+81.45 IS S 30°36'53.66" E, 5729.47' ALL LINEAR DIMENSIONS ARE LOCALIZED HORIZONTAL DISTANCES VERTICAL DATUM USED IS NAVD 88

8/17/95