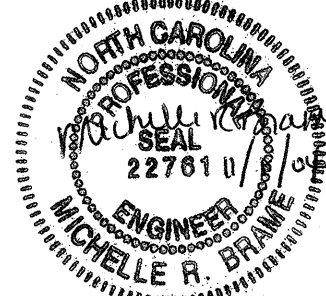
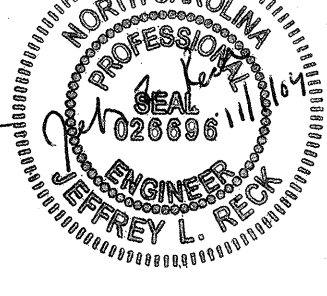
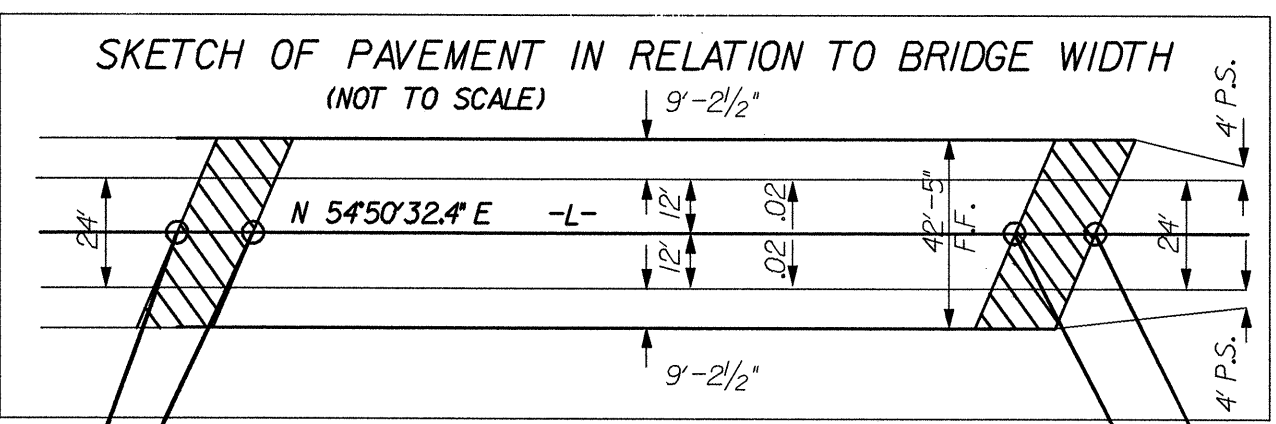
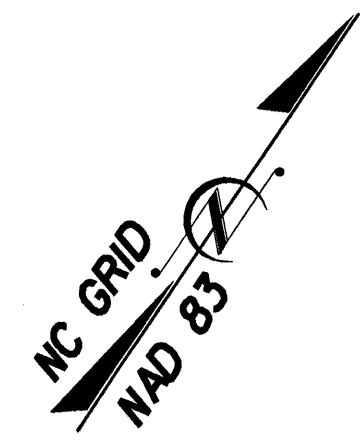
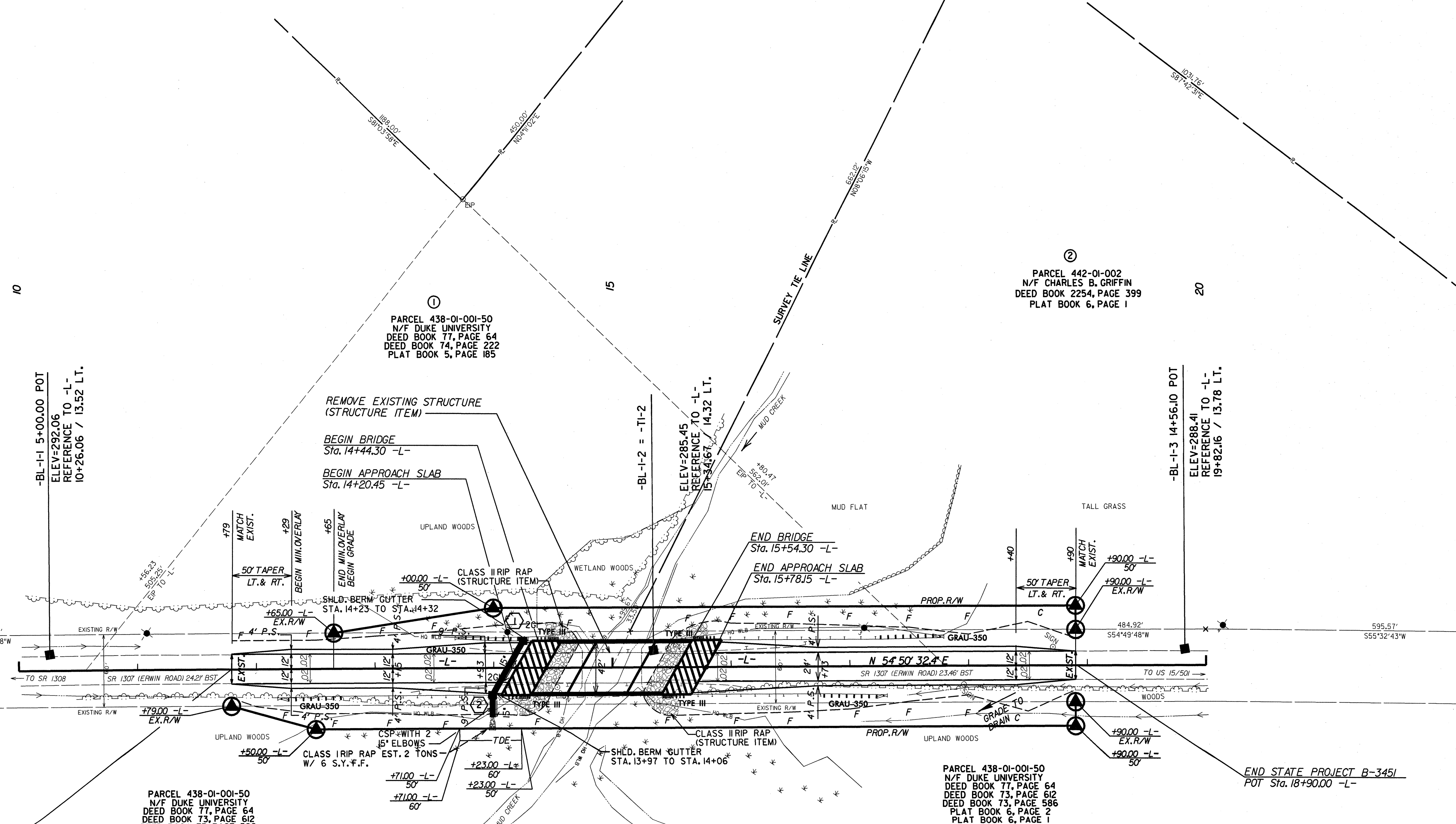


PROJECT REFERENCE NO. B-3451		SHEET NO. 4	
RW SHEET NO.			
ROADWAY DESIGN ENGINEER		HYDRAULICS ENGINEER	
			



BEGIN APPROACH SLAB Sta. 14+20.45 -L-
 END APPROACH SLAB Sta. 15+78.15 -L-
 BEGIN BRIDGE Sta. 14+44.30 -L-
 END BRIDGE Sta. 15+54.30 -L-




BEGIN STATE PROJECT B-3451
POT Sta. 11+79.00 -L-

PARCEL 438-01-001-50
N/F DUKE UNIVERSITY
DEED BOOK 77, PAGE 64
DEED BOOK 73, PAGE 612
DEED BOOK 73, PAGE 586
PLAT BOOK 6, PAGE 2
PLAT BOOK 6, PAGE 1

PARCEL 438-01-001-50
N/F DUKE UNIVERSITY
DEED BOOK 77, PAGE 64
DEED BOOK 73, PAGE 612
DEED BOOK 73, PAGE 586
PLAT BOOK 6, PAGE 2
PLAT BOOK 6, PAGE 1

END STATE PROJECT B-3451
POT Sta. 18+90.00 -L-

 DENOTES APPROACH SLAB

NOTES:
1. SEE SHEETS S-1 THRU S-2 FOR STRUCTURE PLANS.
2. SEE SHEET 5 FOR GRADE AND PROFILE.

DATUM DESCRIPTION
 THE LOCALIZED COORDINATE SYSTEM DEVELOPED FOR THIS PROJECT IS BASED ON THE STATE PLANE COORDINATES ESTABLISHED BY NCDOT FOR MONUMENT "B3451-1" WITH NAD 1983/95 STATE PLANE GRID COORDINATES OF NORTHING: 818,126,5626(ft) EASTING: 2,009,213,304(ft). THE AVERAGE COMBINED GRID FACTOR USED ON THIS PROJECT (GROUND TO GRID) IS: 0.99994774. THE N.C. LAMBERT GRID BEARING AND LOCALIZED HORIZONTAL GROUND DISTANCE FROM "B3451-1" TO -L- STATION 11+79.00 IS S 52°39'18" W, 859.88'. ALL LINEAR DIMENSIONS ARE LOCALIZED HORIZONTAL DISTANCES. VERTICAL DATUM USED IS NAVD 88.

REVISIONS