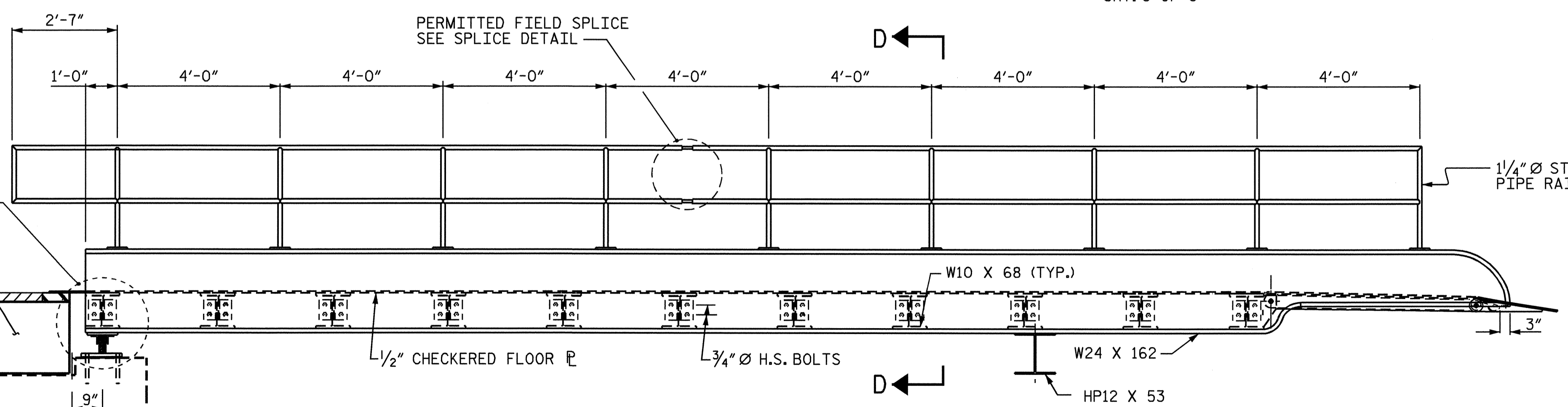


PLAN



ELEVATION

NOTES

ALL BOLTS, WASHERS, NUTS, AND OTHER HARDWARE TO BE METALLIZED.

ALL BOLTS TO BE HIGH STRENGTH (AASHTO M164) UNLESS NOTED OTHERWISE.

DECK BOLTS TO BE A307 CARRIAGE BOLTS, SQUARE NECK WITH WASHER, NUT, AND JAM NUT.

ALL DECK PLATES TO BE METALLIZED AFTER FABRICATION. ALL WELDING REQUIRED ON RAMPS TO BE COMPLETED BEFORE METALLIZATION.

ALL STEEL M270 GRADE A36 UNLESS NOTED OTHERWISE.

ALL GIRDETS, BEAMS, ANGLES, CHANNELS, PLATES, RODS, AND PIPES TO BE METALLIZED.

ALL DIMENSIONS SHOWN ARE HORIZONTAL OR VERTICAL, UNLESS OTHERWISE NOTED.

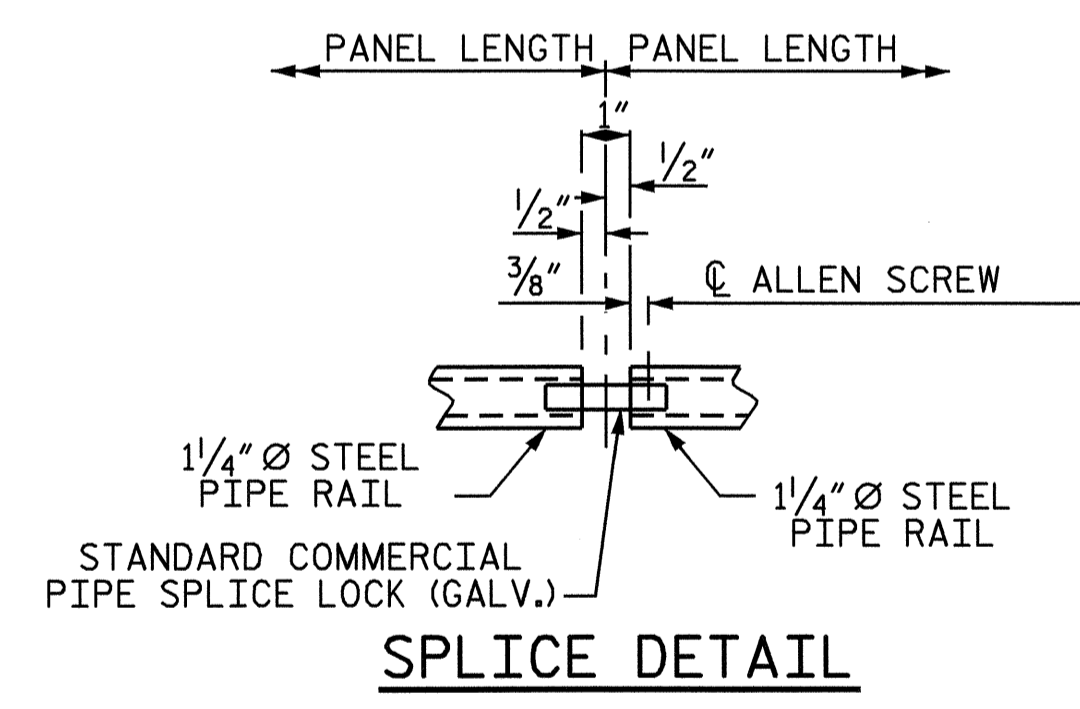
AT FIXED POINTS OF SUPPORT, NUTS FOR ANCHOR BOLTS SHALL BE TIGHTENED FINGER TIGHT AND THEN BACKED OFF 1/2 TURN. THE THREAD OF THE NUT AND BOLT SHALL THEN BE BURRED WITH A SHARP POINTED TOOL.

DECK PLATES SHALL RECEIVE AN EPOXY SKID RESISTANT OVERLAY. SEE SPECIAL PROVISIONS.

FOR METALLIZATION, SEE SPECIAL PROVISIONS.

FOR FINISH PAINT FOR METALLIZED STRUCTURAL STEEL, SEE SPECIAL PROVISIONS.

THE RAMP SHALL BE METALLIZED WITH A W-Zn-2 ZINC ALLOY. SEE SPECIAL PROVISION FOR THERMAL SPRAYED COATING (METALLIZATION).



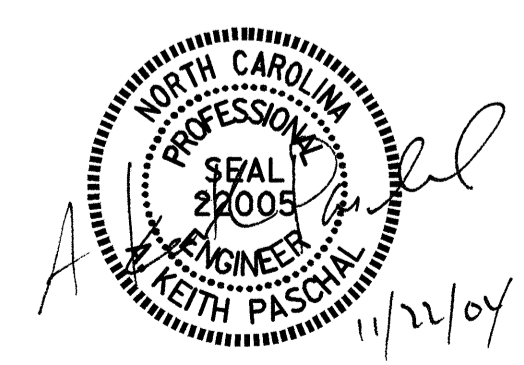
SPLICE DETAIL

PROJECT NO. F-4700
 CURRITUCK COUNTY
 STATION: 10+00.00 -RP1-

SHEET 1 OF 8

STATE OF NORTH CAROLINA
 DEPARTMENT OF TRANSPORTATION
 RALEIGH

CURRITUCK FERRY RAMP



DRAWN BY : K. McCAULEY DATE : 9/13/04
 CHECKED BY : O. PUIGSERVER DATE : 9/24/04

REVISIONS						SHEET NO.	
NO.	BY:	DATE:	NO.	BY:	DATE:	S-11	
1			3			TOTAL SHEETS	56
2			4				