

NOTES

APPROXIMATE WEIGHT OF ONE COUNTERWEIGHT (MADE UP OF CONCRETE AND STEEL PLATES) IS BASED ON CONCRETE WEIGHT OF 150 LBS. PER CUBIC FOOT = 11,630 LBS.

REACTION ON ONE HYDRAULIC CYLINDER APPROXIMATELY = 1,500 LBS.

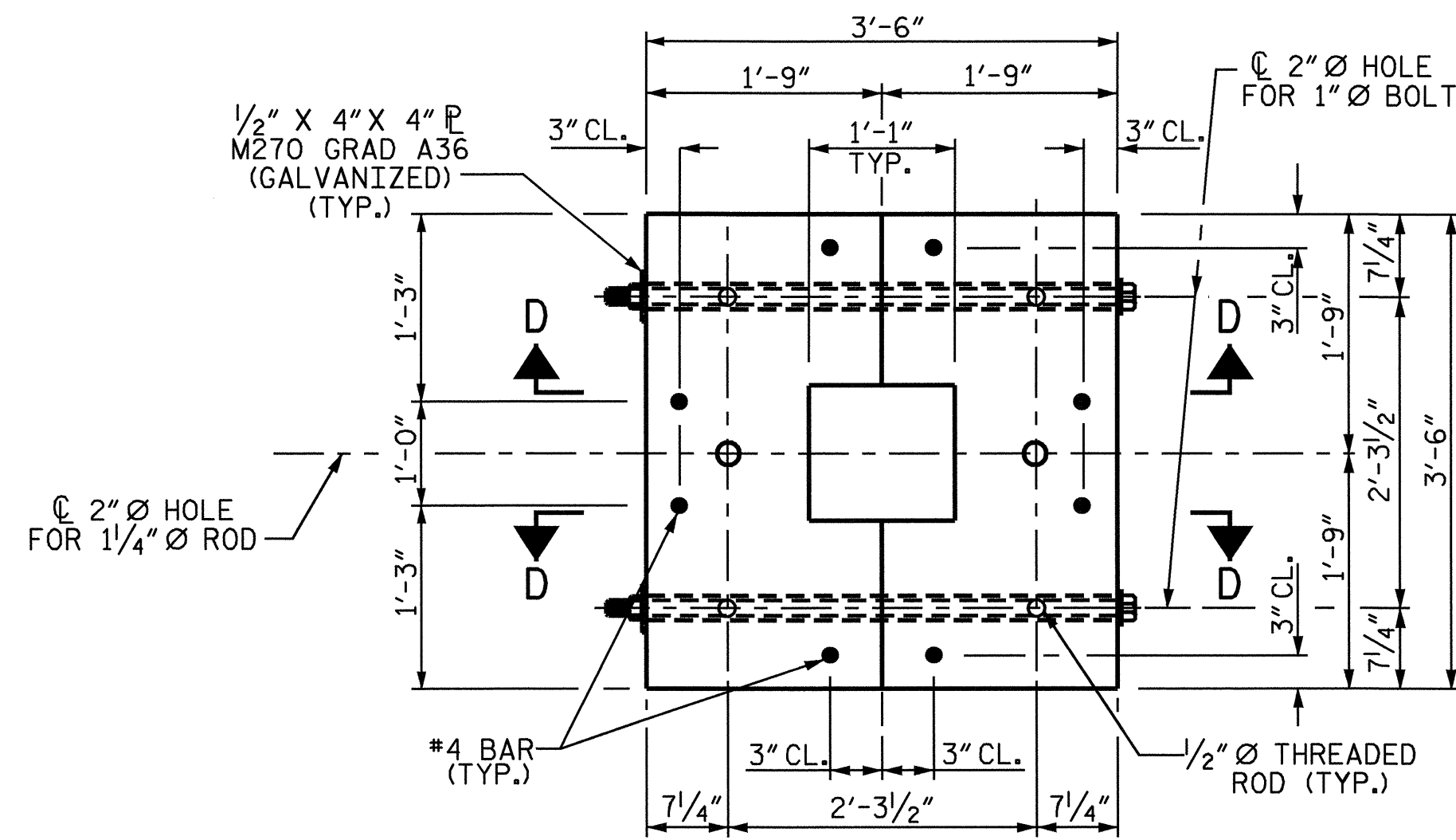
FOR ADHESIVELY ANCHORED ANCHOR BOLTS AND DOWELS, SEE SPECIAL PROVISIONS.

ALL STEEL SHALL BE GALVANIZED.

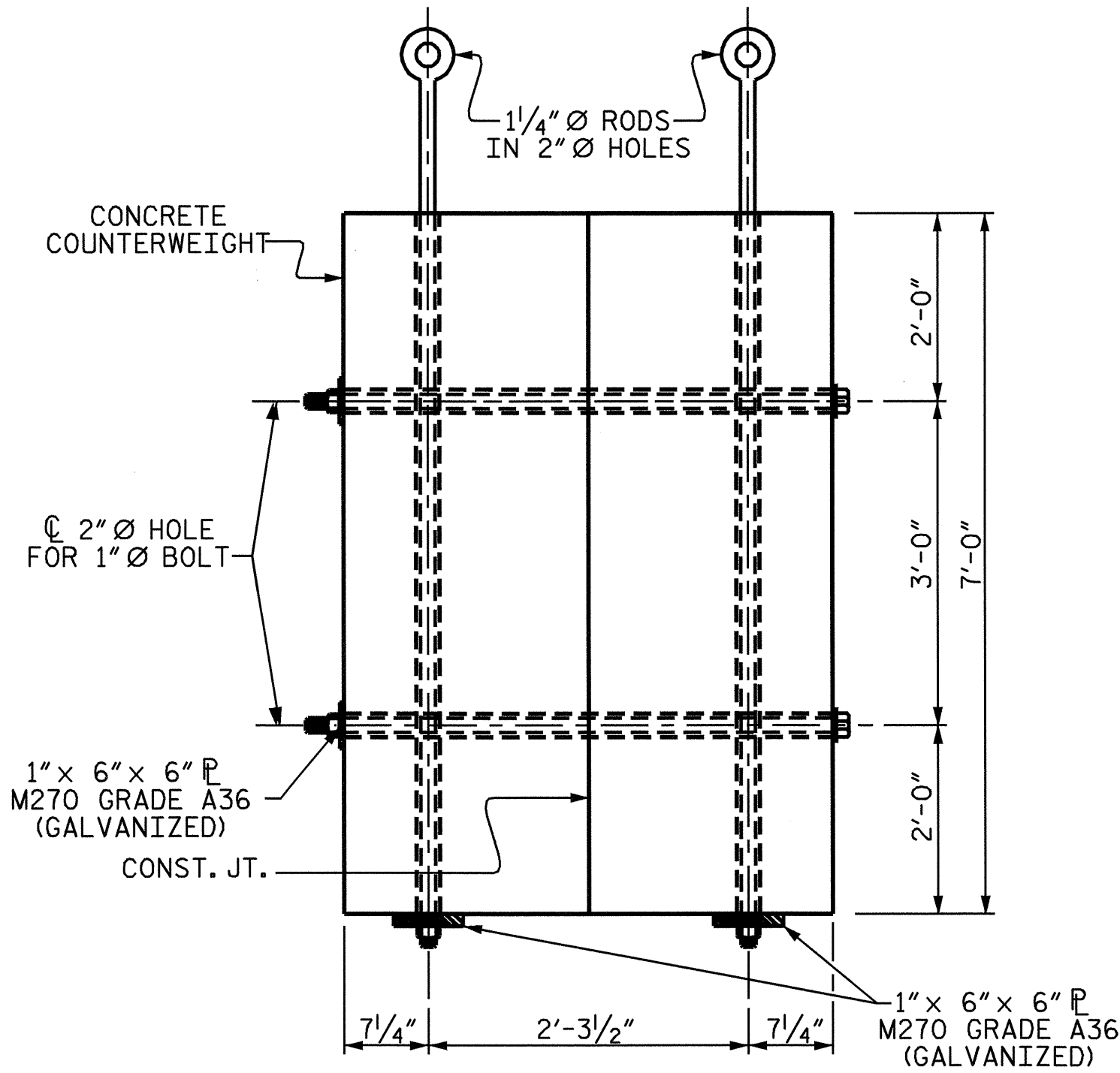
FOR CONCRETE COUNTERWEIGHT, SEE SPECIAL PROVISIONS.

ALL STEEL M270 GRADE A36 UNLESS NOTED OTHERWISE.

1/2 RAMP REACTION AT LIFT BENT APPROXIMATELY = 13,130 LBS.

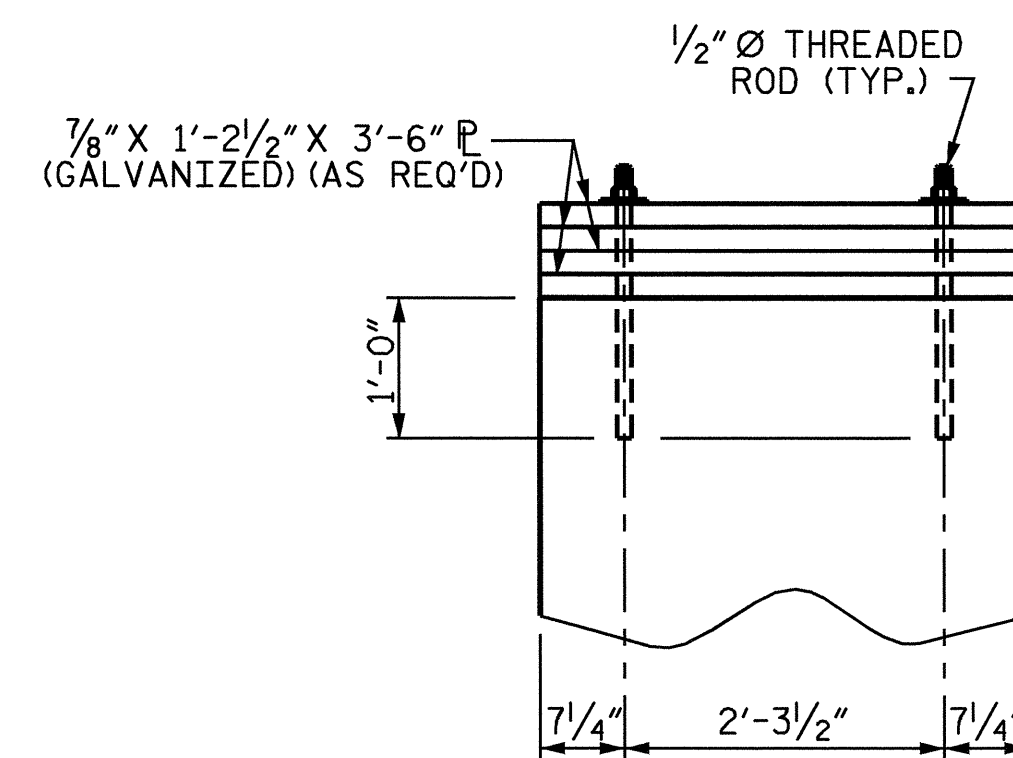


PLAN



ELEVATION

(STEEL PLATES AND THREADED ROD DELETED FOR CLARITY)



SECTION D-D

NOTE: GALVANIZED PLATES MAY REQUIRE ADJUSTMENT TO MEET DESIRED WEIGHT.

BILL OF MATERIAL	
CLASS AA CONCRETE	6.4 CU. YDS.

COUNTERWEIGHT DETAIL

(COUNTERWEIGHT DETAILS, ALL HARDWARE TO BE GALVANIZED)

THE 1/4" Ø ROD, 1/2" Ø THREADED ROD & 1" Ø BOLT FOR THE COUNTERWEIGHT SHALL BE IN ACCORDANCE WITH ASTM F-593 GROUP 2 (TYPE 316 STAINLESS STEEL.)

PROJECT NO. F-4700
CURRITUCK COUNTY
 STATION: 10+00.00 -RP1-

STATE OF NORTH CAROLINA
 DEPARTMENT OF TRANSPORTATION
 RALEIGH

COUNTERWEIGHT
 DETAILS



DRAWN BY: K. McCAULEY DATE: 11/30/04
 CHECKED BY: A. K. PASCHAL DATE: 11/30/04

30-NOV-2004 17:01
 W:\squadp\F4700\kmccauley\Str. 1\Microstation\F4700.sd.FR.01.dgn
 kmccauley

REVISIONS						SHEET NO.
NO.	BY:	DATE:	NO.	BY:	DATE:	S-18A
1			3			TOTAL SHEETS
2			4			56