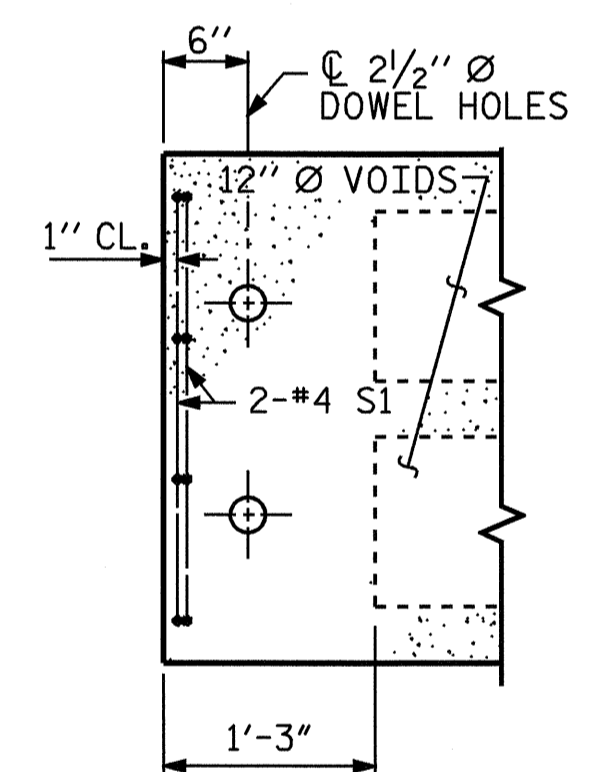


GROUTED RECESS AT END OF POST TENSIONED STRAND CORED SLABS

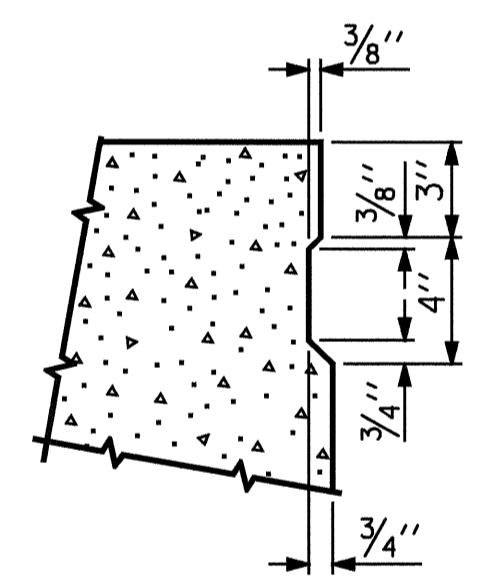
HALF SECTION @ INTERMEDIATE DIAPHRAGM

TYPICAL SECTION

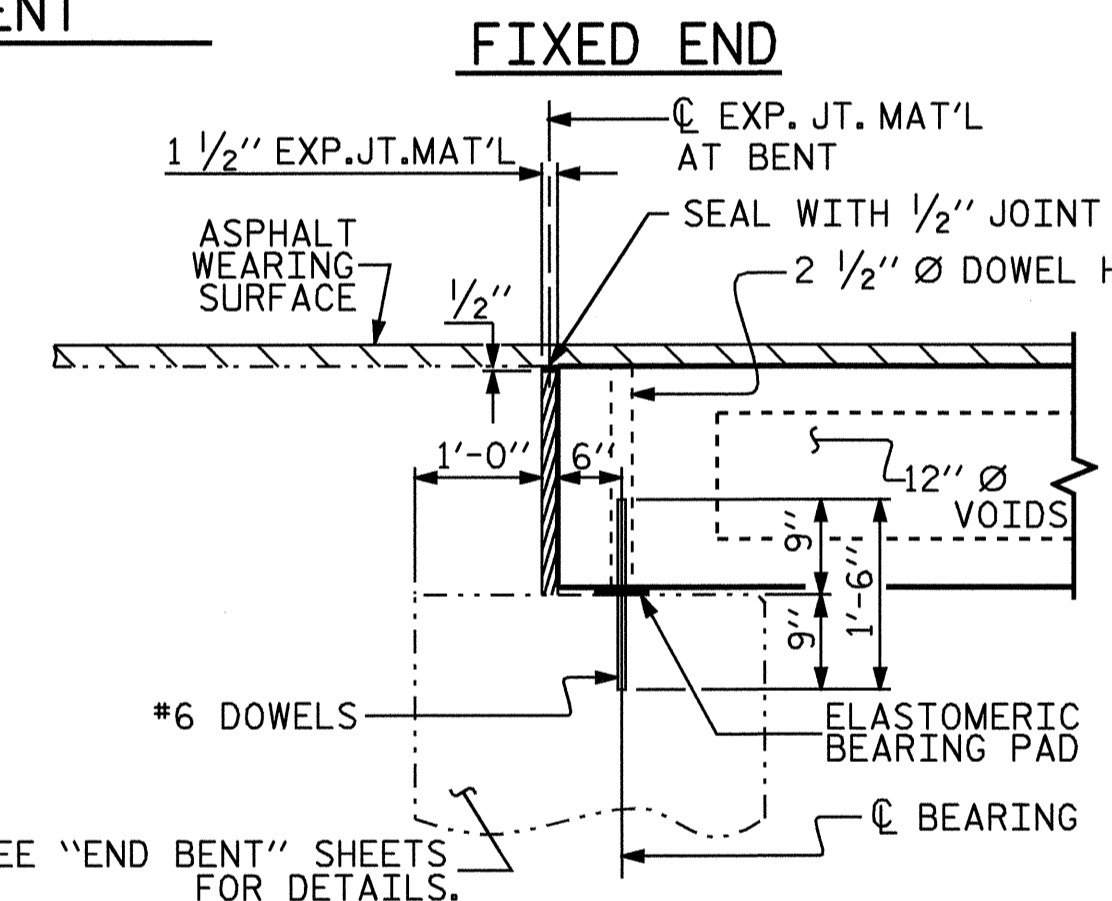
HALF SECTION @ END BENT AND BENT



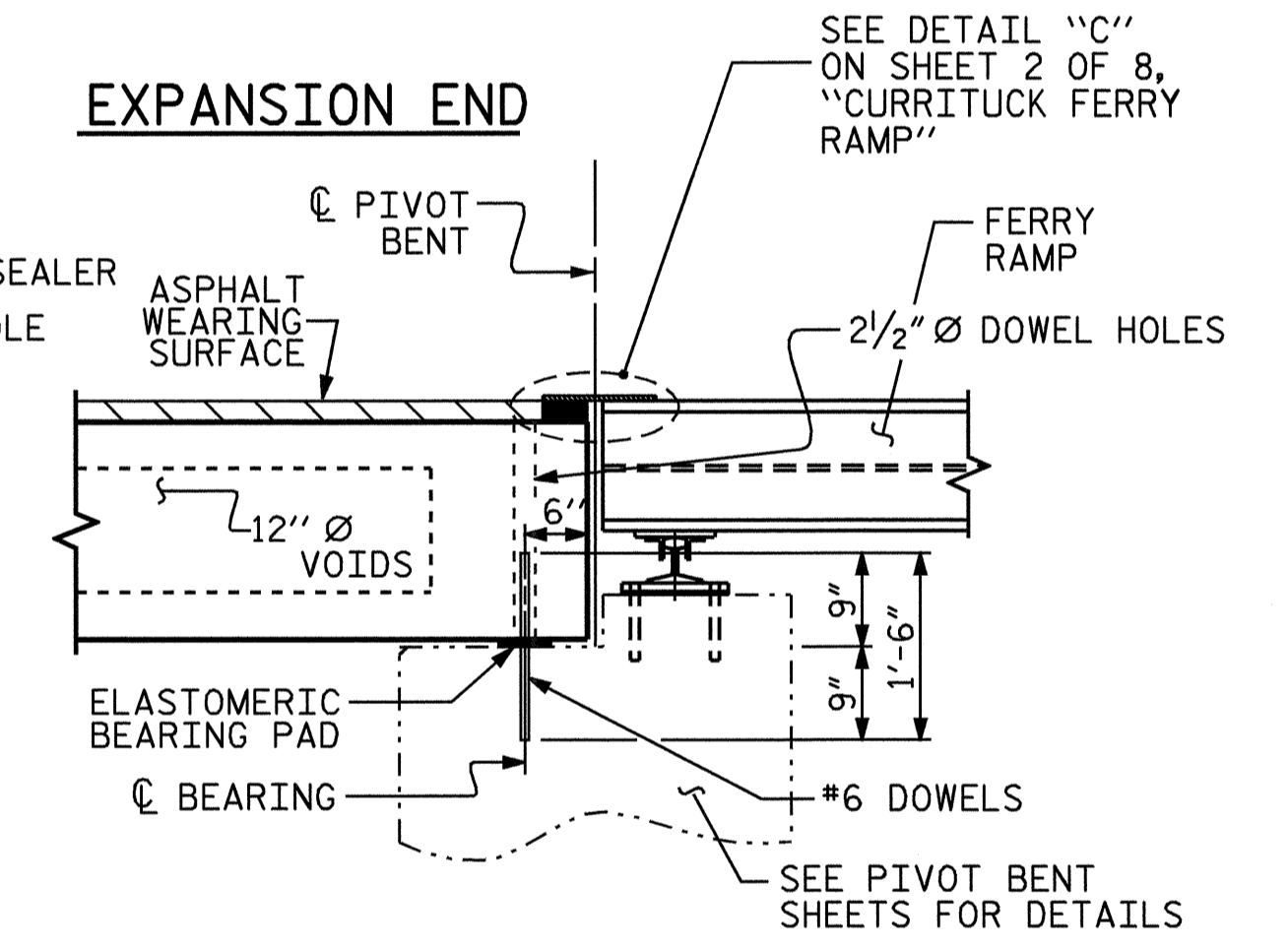
PART PLAN CORED SLAB UNIT



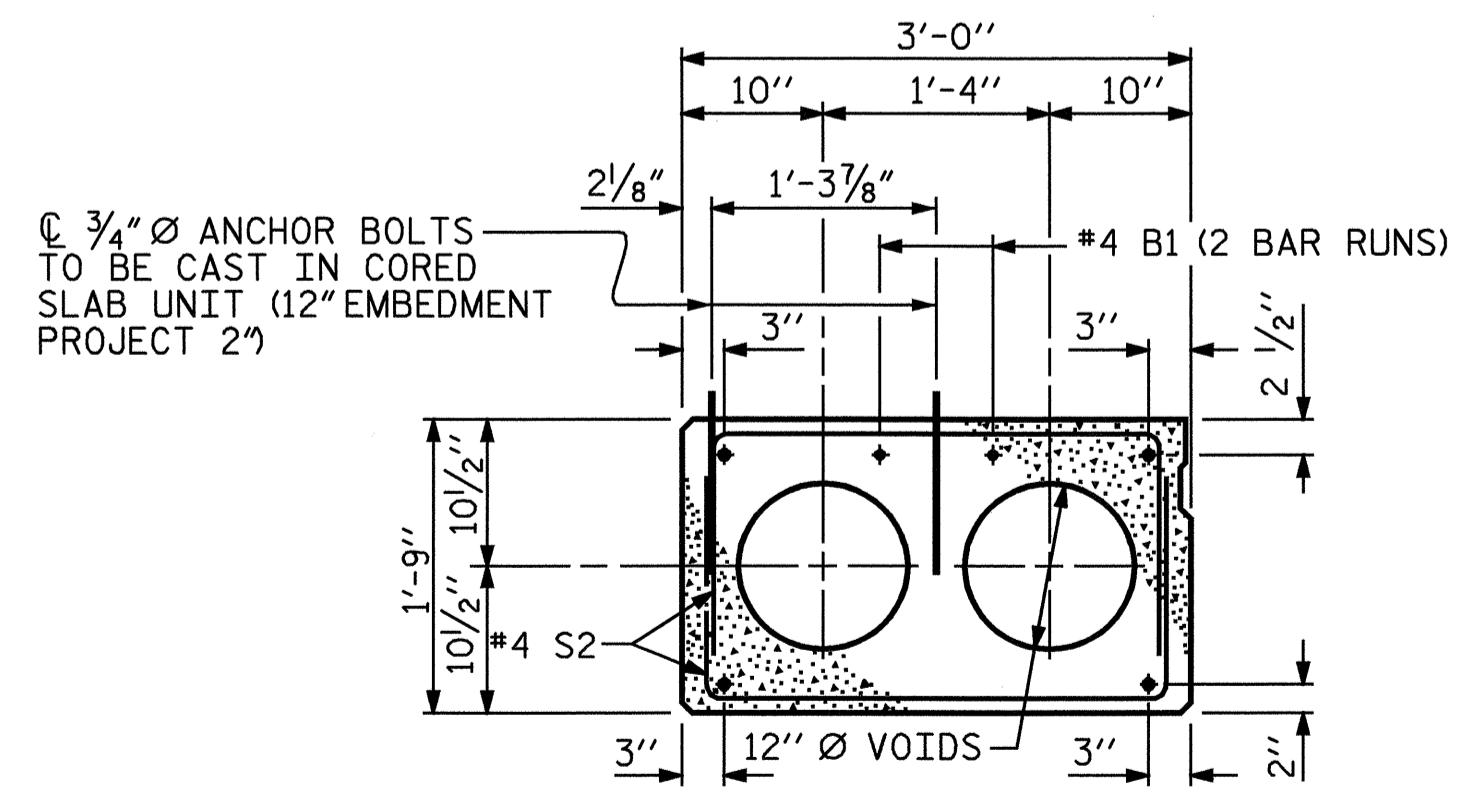
SHEAR KEY DETAIL
NOTE: OMIT SHEAR KEY ON OUTSIDE FACE OF EXTERIOR CORED SLABS.



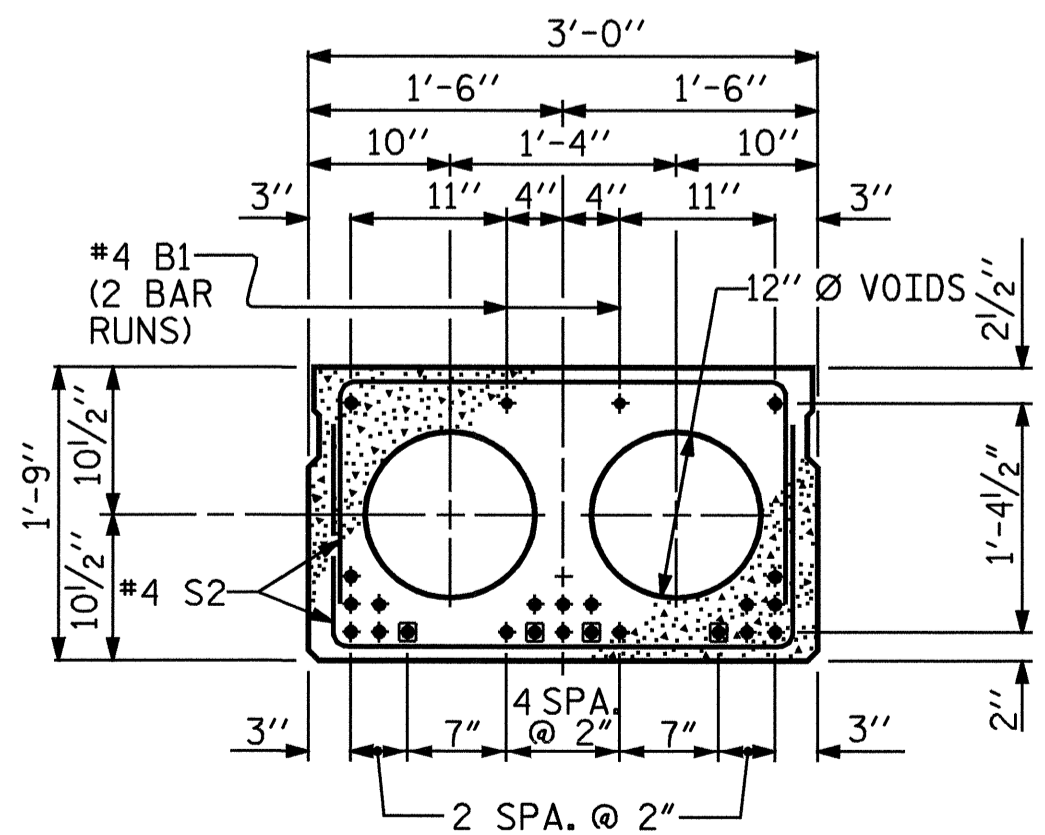
SECTION AT END BENT



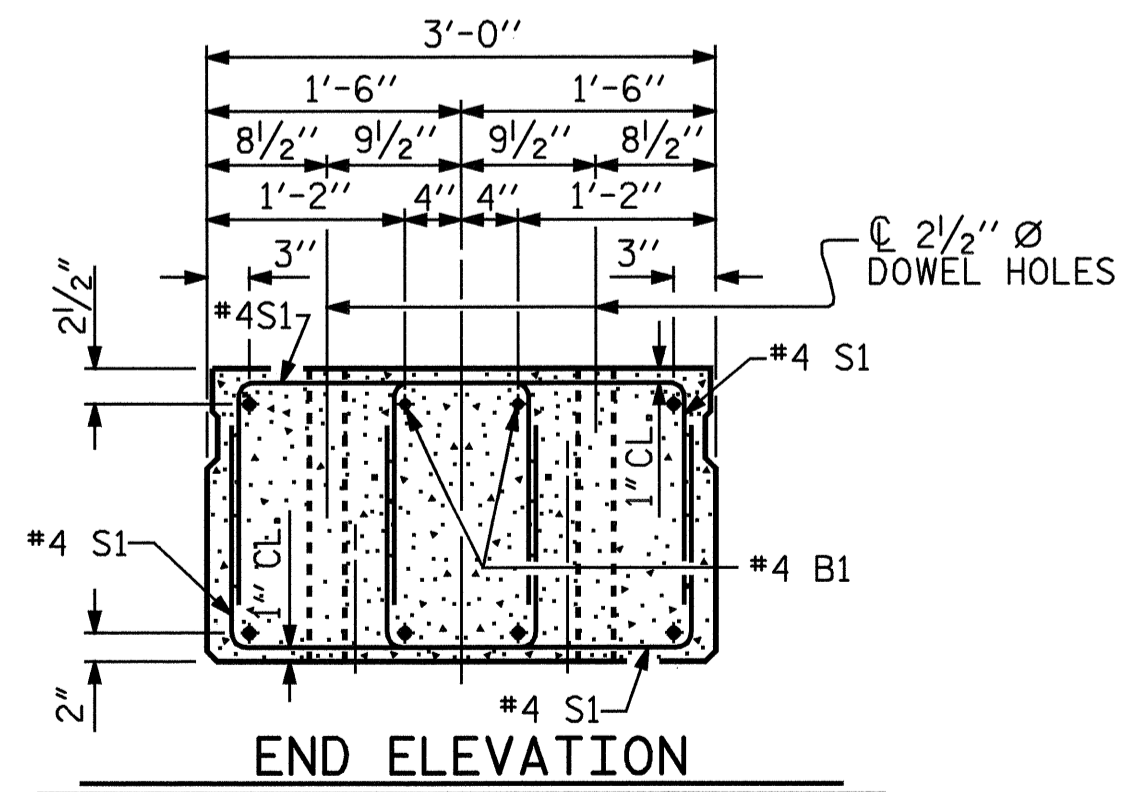
SECTION AT PIVOT BENT



EXTERIOR SLAB SECTION
(FOR PRESTRESSED STRAND LAYOUT, SEE INTERIOR SLAB SECTION.)



INTERIOR SLAB SECTION
1/2" Ø LOW RELAXATION STRAND LAYOUT
(22 STRANDS)

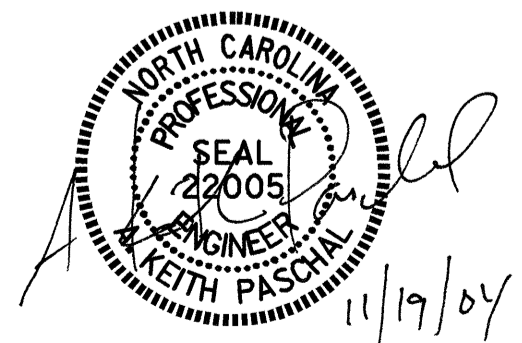


END ELEVATION
SHOWING PLACEMENT OF DOUBLE STIRRUPS AND LOCATION OF DOWEL HOLES. (STRAND LAYOUT NOT SHOWN) INTERIOR SLAB SECTION SHOWN-EXTERIOR SLAB SECTION SIMILAR EXCEPT SHEAR KEY LOCATION.

PROJECT NO. F-4700
CURRITUCK COUNTY
STATION: 10+00.00 -RP2-

SHEET 1 OF 3

STATE OF NORTH CAROLINA
DEPARTMENT OF TRANSPORTATION
RALEIGH
SUPERSTRUCTURE
3'-0" X 1'-9"
PRESTRESSED CONCRETE
CORED SLAB UNIT
KNOTTS ISLAND
FERRY BASIN
OCTOBER 1981



ASSEMBLED BY : K. McCAULEY	DATE : 8/30/04
CHECKED BY : O. PUIGSERVER	DATE : 10/5/04
DRAWN BY : WJH	4/89
CHECKED BY : FCJ	5/89
REV. 8/16/99	RWW/LES
REV. 10/17/00	RWW/LES
REV. 7/10/01	RWW/LES

Ⓢ BOND SHALL BE BROKEN FOR THESE STRANDS FOR A DISTANCE OF 4'-0" FROM END OF CORED SLAB UNIT, SEE STANDARD SPECIFICATIONS ARTICLE 1078-7.

REVISIONS						SHEET NO.
NO.	BY:	DATE:	NO.	BY:	DATE:	S-33
1			3			TOTAL SHEETS
2			4			56