

NOTES

APPROXIMATE WEIGHT OF ONE COUNTERWEIGHT (MADE UP OF CONCRETE AND STEEL PLATES) IS BASED ON CONCRETE WEIGHT OF 150 LBS. PER CUBIC FOOT = 11,630 LBS.

REACTION ON ONE HYDRAULIC CYLINDER APPROXIMATELY = 1,500 LBS.

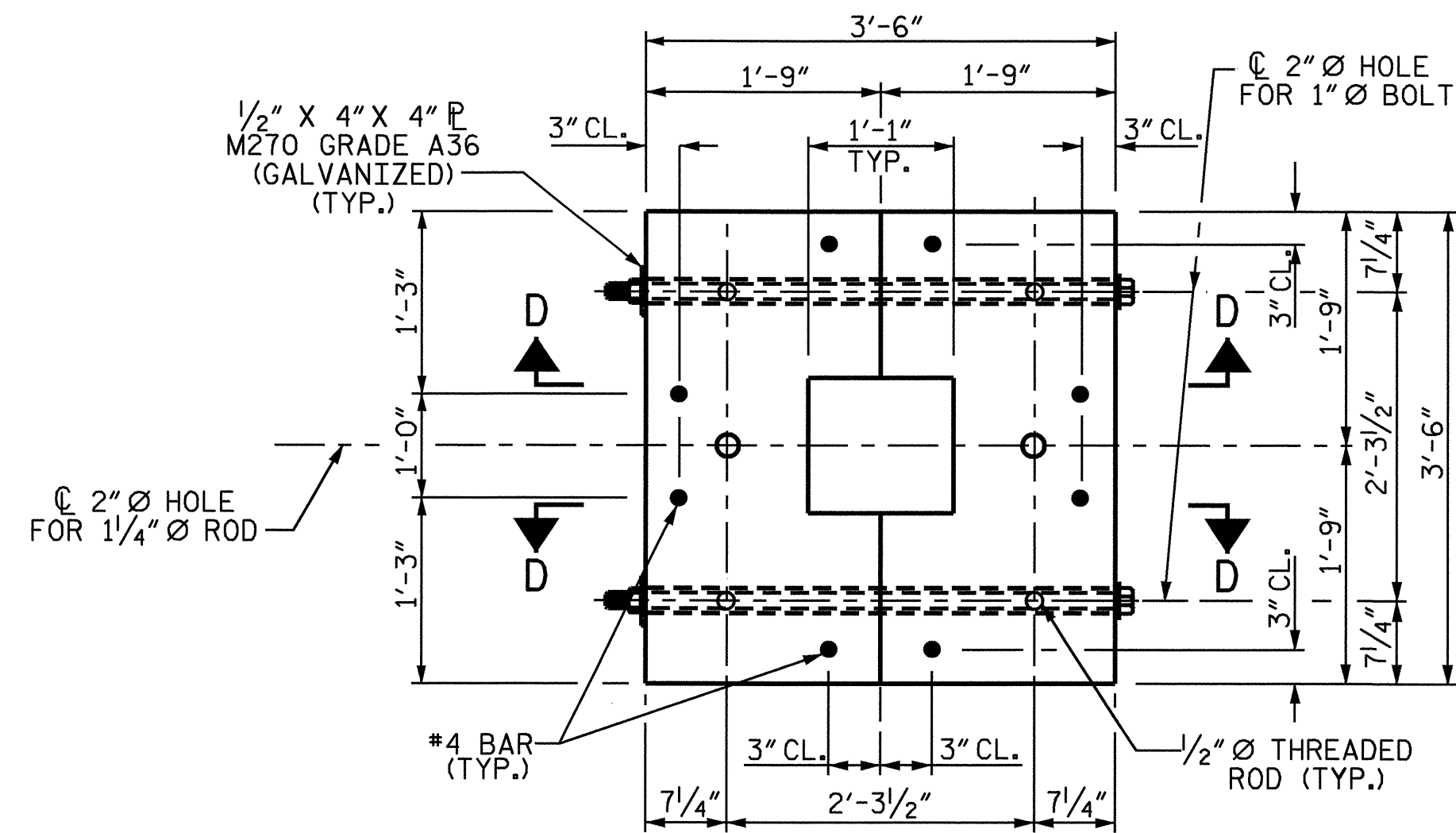
FOR ADHESIVELY ANCHORED ANCHOR BOLTS AND DOWELS, SEE SPECIAL PROVISIONS.

ALL STEEL SHALL BE GALVANIZED.

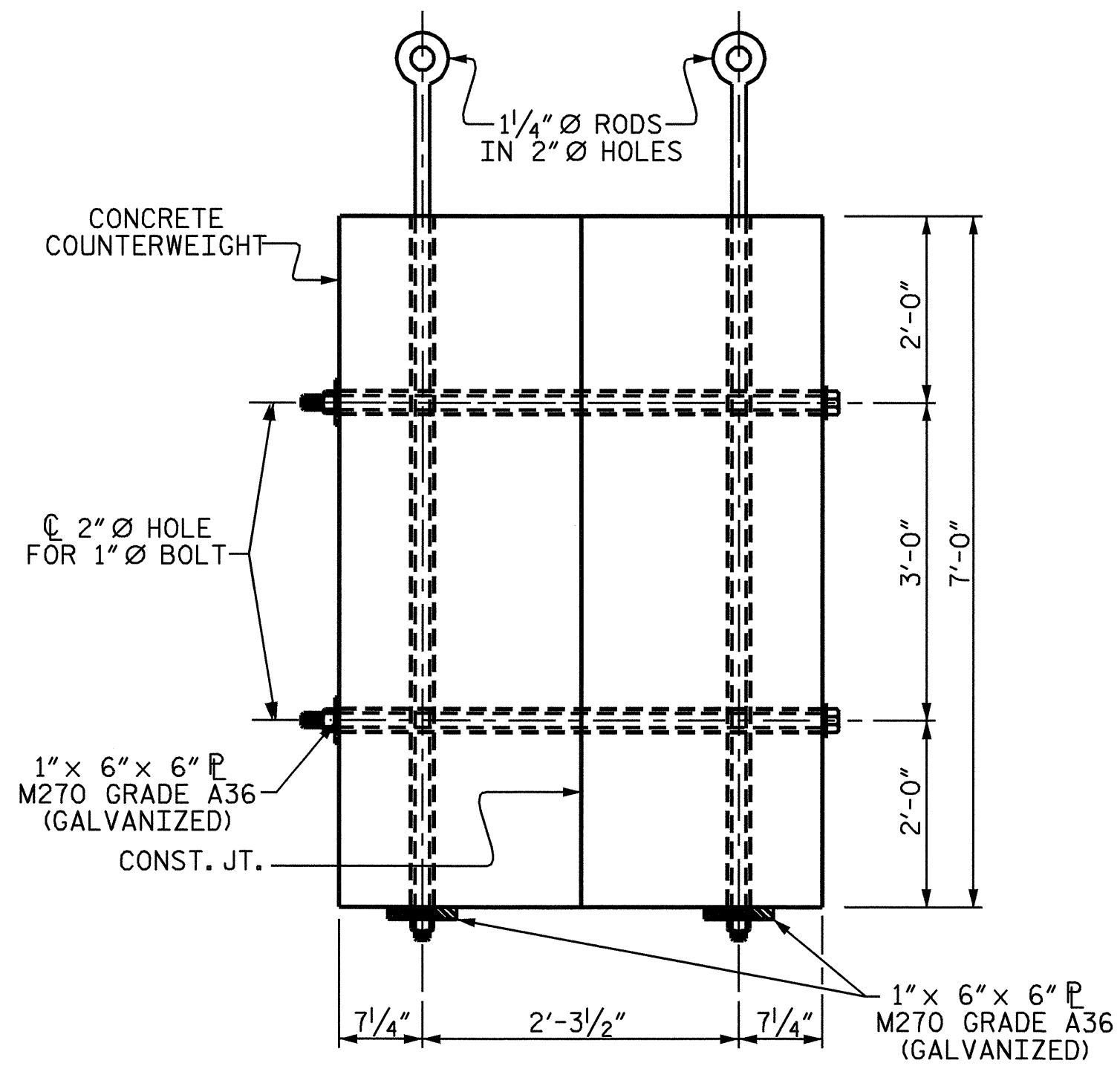
FOR CONCRETE COUNTERWEIGHT, SEE SPECIAL PROVISIONS.

ALL STEEL M270 GRADE A36 UNLESS NOTED OTHERWISE.

1/2 RAMP REACTION AT LIFT BENT APPROXIMATELY = 13,130 LBS.

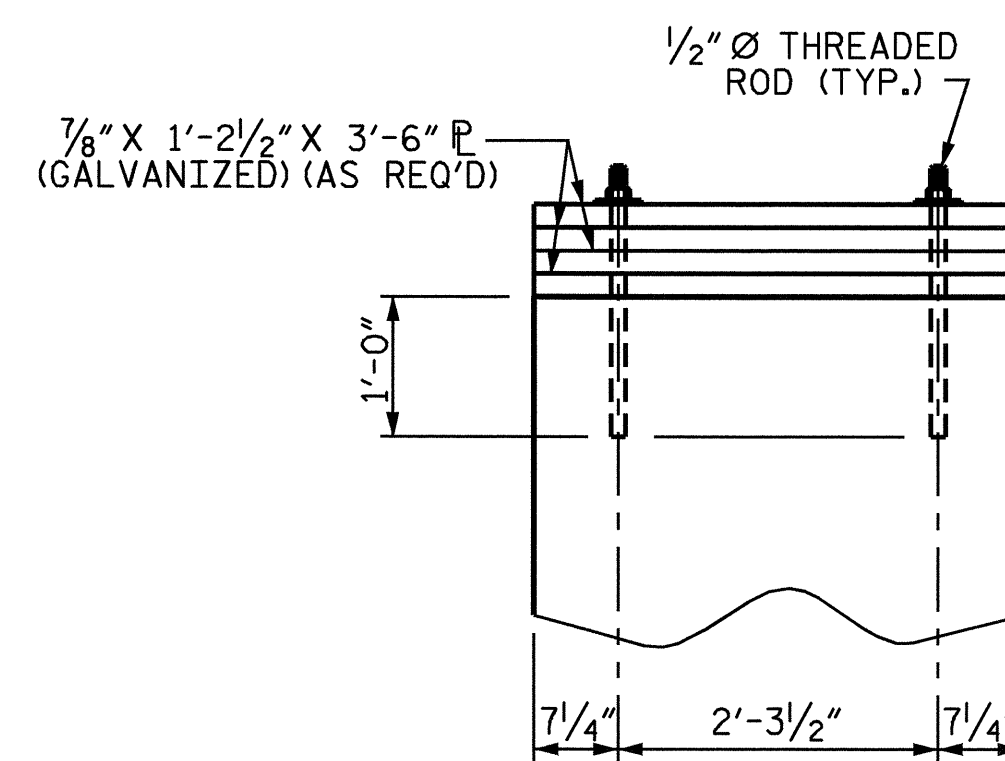


PLAN



ELEVATION

(STEEL PLATES AND THREADED ROD DELETED FOR CLARITY)



SECTION D-D

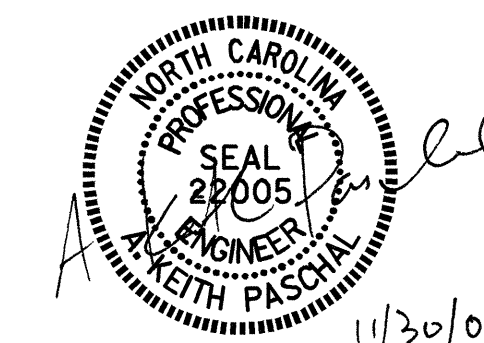
NOTE: GALVANIZED PLATES MAY REQUIRE ADJUSTMENT TO MEET DESIRED WEIGHT.

BILL OF MATERIAL	
CLASS AA CONCRETE	6.4 CU. YDS.

COUNTERWEIGHT DETAIL
(COUNTERWEIGHT DETAILS, ALL HARDWARE TO BE GALVANIZED)

THE 1 1/4" Ø ROD, 1/2" Ø THREADED ROD & 1" Ø BOLT FOR THE COUNTERWEIGHT SHALL BE IN ACCORDANCE WITH ASTM F-593 GROUP 2 (TYPE 316 STAINLESS STEEL.)

PROJECT NO. F-4700
CURRITUCK COUNTY
STATION: 10+00.00 -RP2-



STATE OF NORTH CAROLINA DEPARTMENT OF TRANSPORTATION RALEIGH					
COUNTERWEIGHT DETAILS					
REVISIONS					
NO.	BY:	DATE:	NO.	BY:	DATE:
1			3		
2			4		
SHEET NO. S-45A					TOTAL SHEETS 56

DRAWN BY : K. McCAULEY DATE : 11/30/04
CHECKED BY : A. K. PASCHAL DATE : 11/30/04