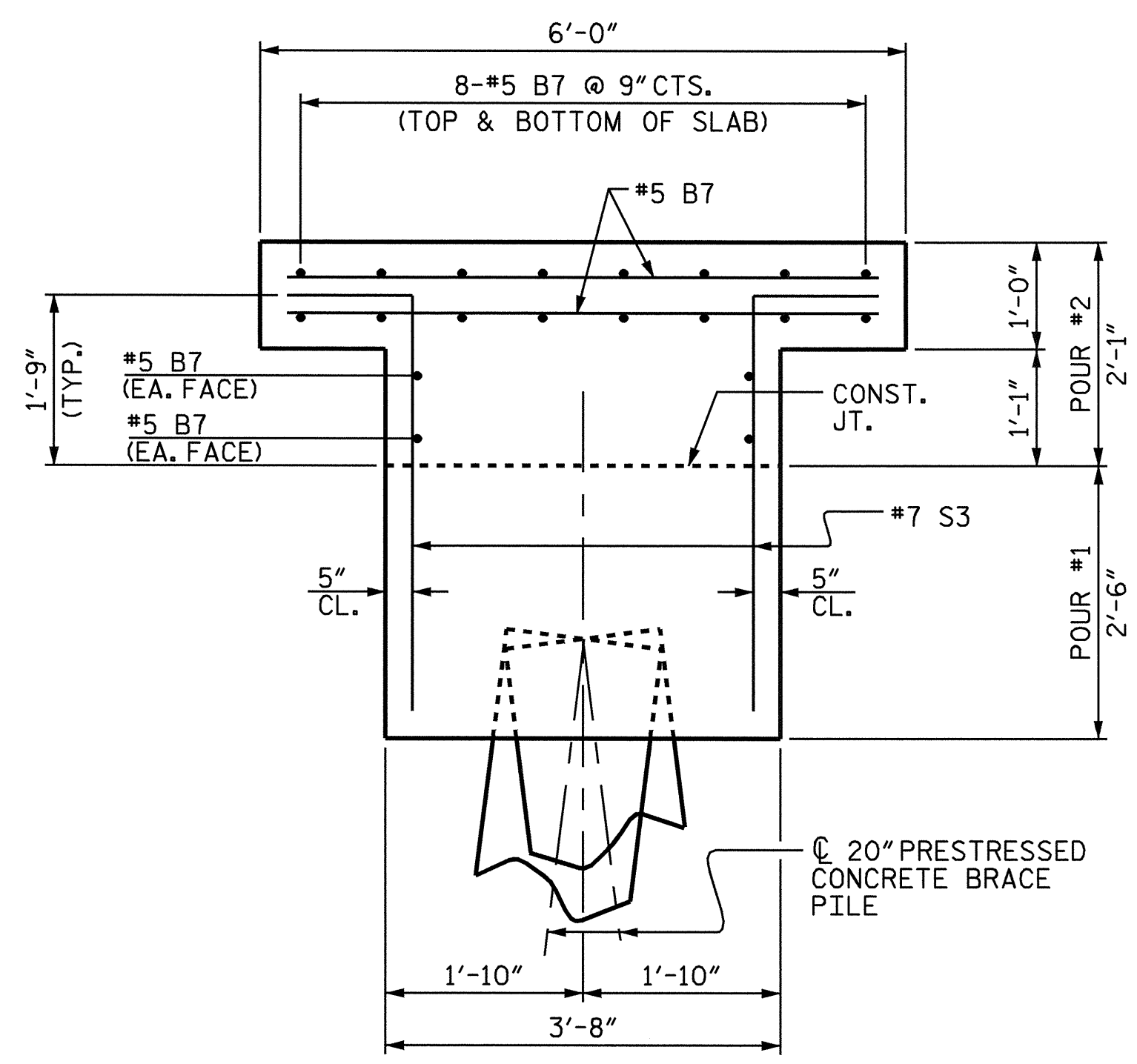
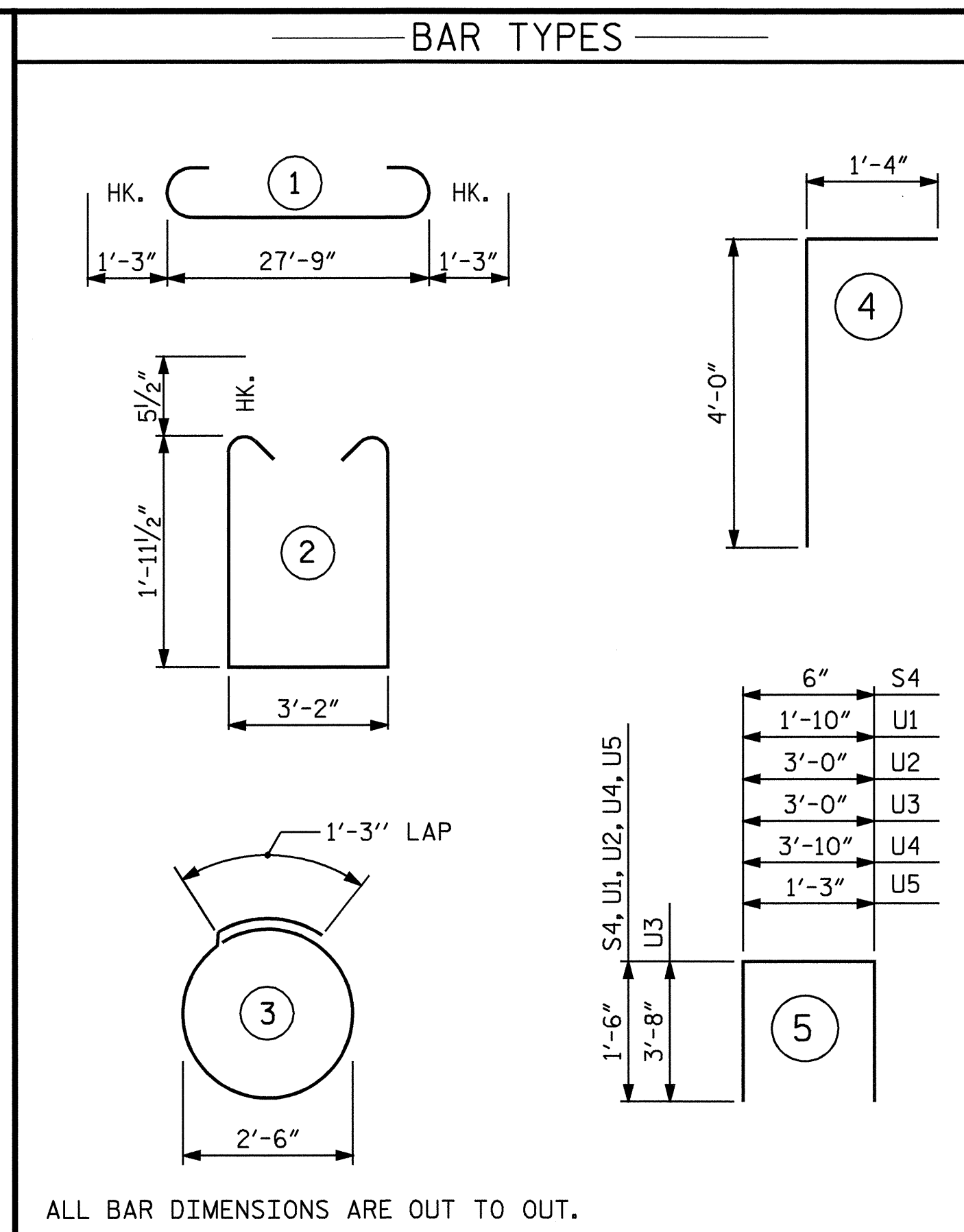


SECTION A-A



SECTION B-B

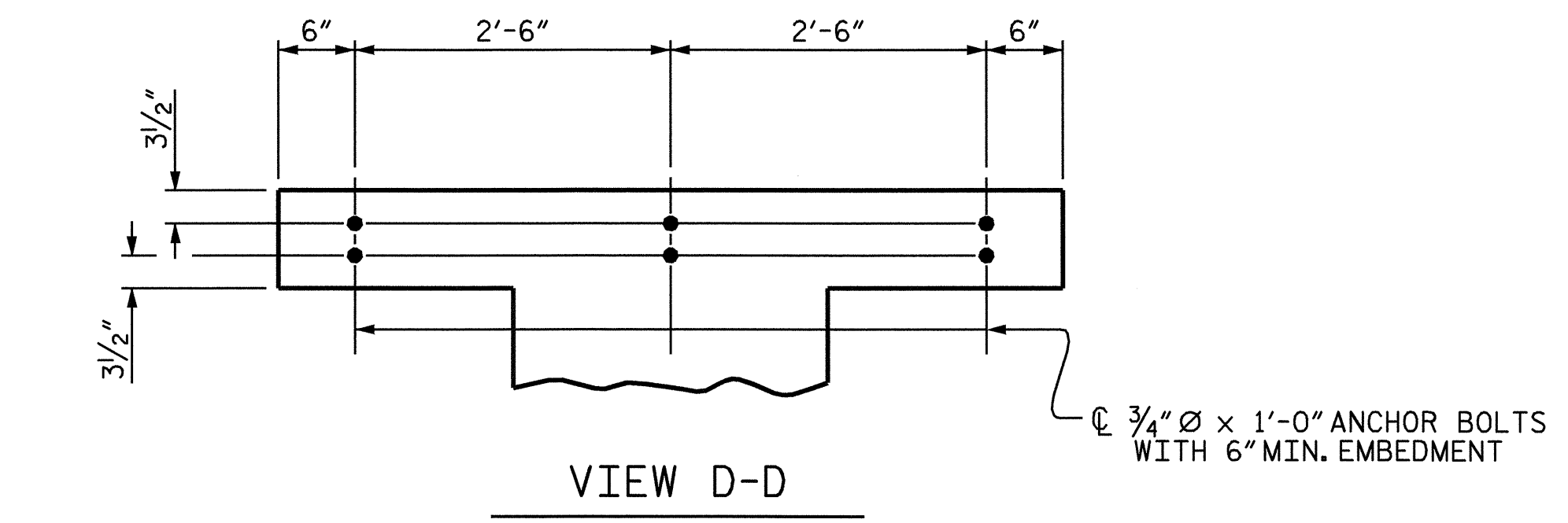
(CAP STEEL NOT SHOWN FOR CLARITY)



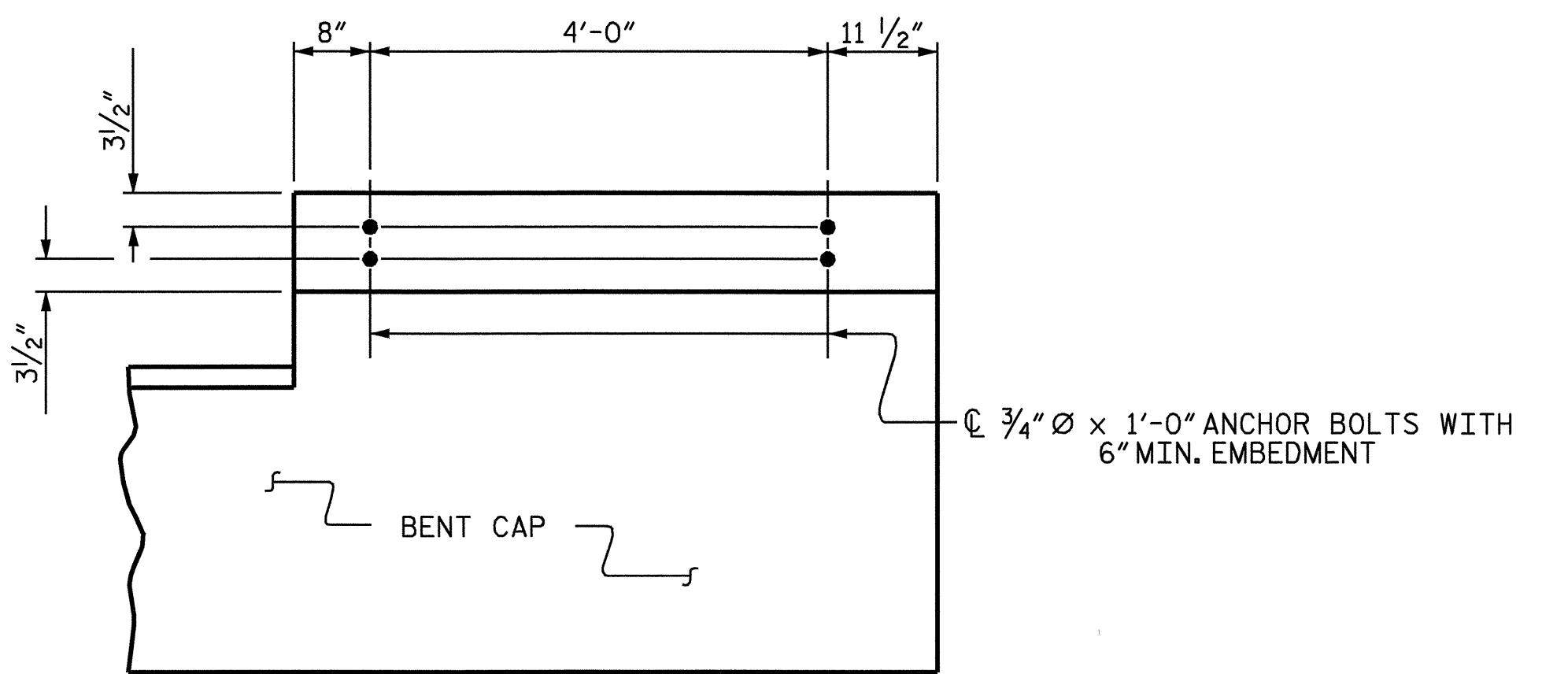
ALL BAR DIMENSIONS ARE OUT TO OUT.

BILL OF MATERIAL					
PIVOT BENT					
BAR	NO.	SIZE	TYPE	LENGTH	WEIGHT
B1	5	9		30-3	514
B2	4	10	STR	27-11	481
B3	4	4	STR	27-11	75
B4	7	4	STR	3-2	15
B5	2	5	STR	27-11	58
B6	6	4	STR	1-6	6
B7	36	5	STR	5-6	207
B8	2	4	STR	1-4	2
D1	14	6	STR	1-6	32
S1	20	5	2	8-0	167
S2	10	4	3	9-2	61
S3	12	7	4	5-4	131
S4	2	4	5	3-6	5
U1	4	4	5	4-10	13
U2	6	4	5	6-0	24
U3	2	9	5	10-4	70
U4	4	4	5	6-10	18
U5	6	4	5	4-3	17
EPOXY COATED REINFORCING STEEL					1896 LBS.
CLASS AA CONCRETE (CU. YDS.)					
POUR #1 ▲ CAP & BUILD UPS					9.2
POUR #2 CONCRETE PLATFORM DECK & LATERAL GUIDES					2.8
TOTAL					12.0
20" PRESTRESSED CONCRETE PILES					
NO. 5 (LIN. FT.)					125.0

▲ CONCRETE THAT IS DISPLACED BY THE 20" PRESTRESSED CONCRETE PILES HAS BEEN DEDUCTED FROM THIS QUANTITY.

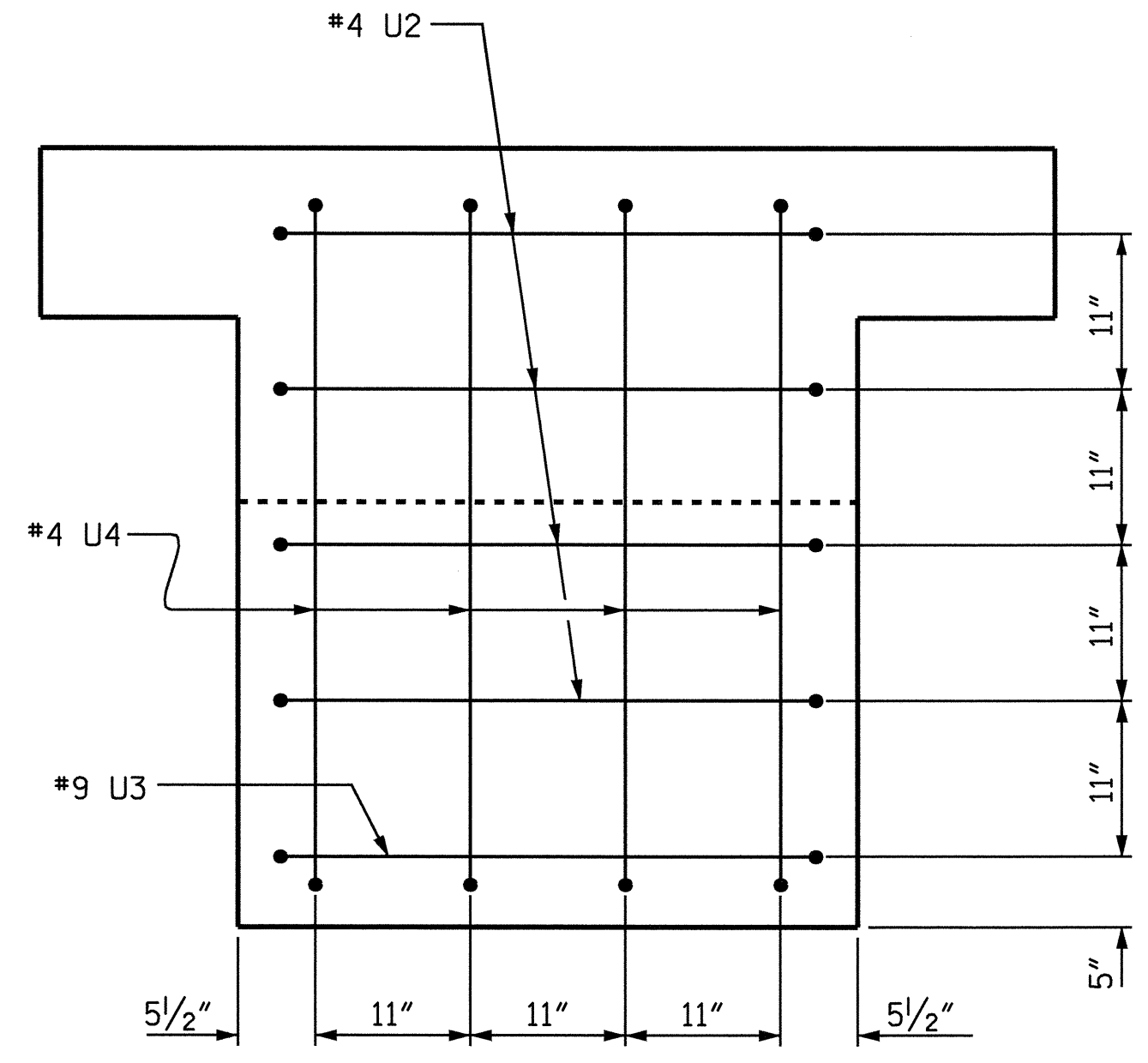


VIEW D-D

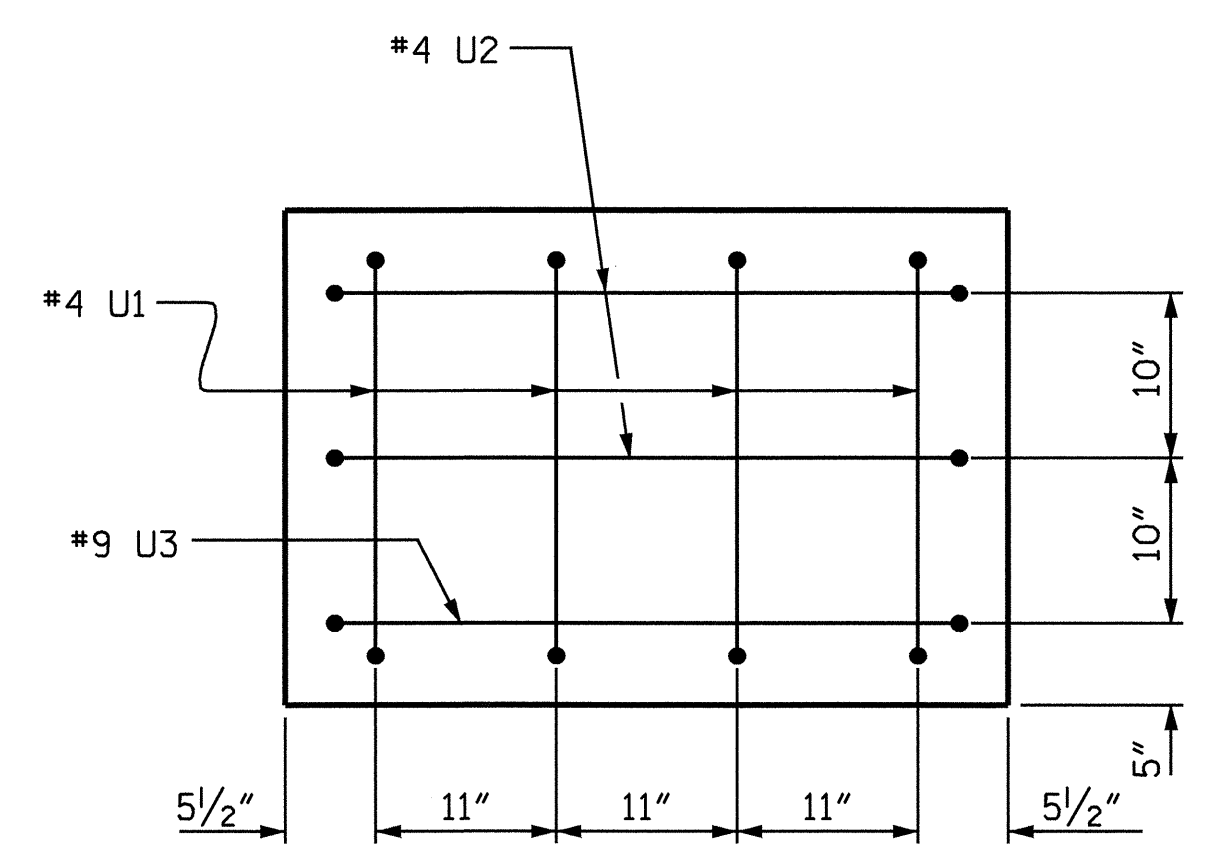


VIEW C-C

RAIL ANCHOR DETAILS FOR CONCRETE PLATFORM PLATFORM



VIEW Z-Z



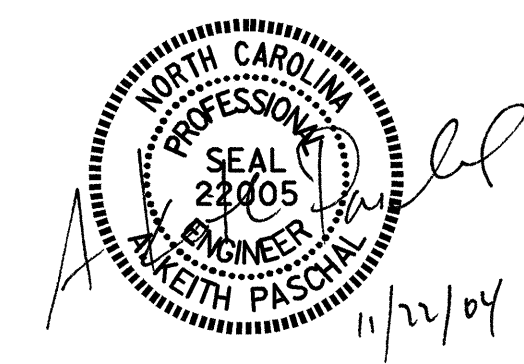
VIEW Y-Y

PROJECT NO. F-4700
CURRITUCK COUNTY
STATION: 10+00.00 -RP2-

SHEET 2 OF 2

STATE OF NORTH CAROLINA
DEPARTMENT OF TRANSPORTATION
RALEIGH

SUBSTRUCTURE
PIVOT BENT
KNOTTS ISLAND FERRY BASIN



DRAWN BY: K. McCAULEY DATE: 9/21/04
CHECKED BY: O. PUIGCERVER DATE: 10/5/04

REVISIONS						SHEET NO.	
NO.	BY:	DATE:	NO.	BY:	DATE:	S-47	
1			3			TOTAL SHEETS	
2			4			56	