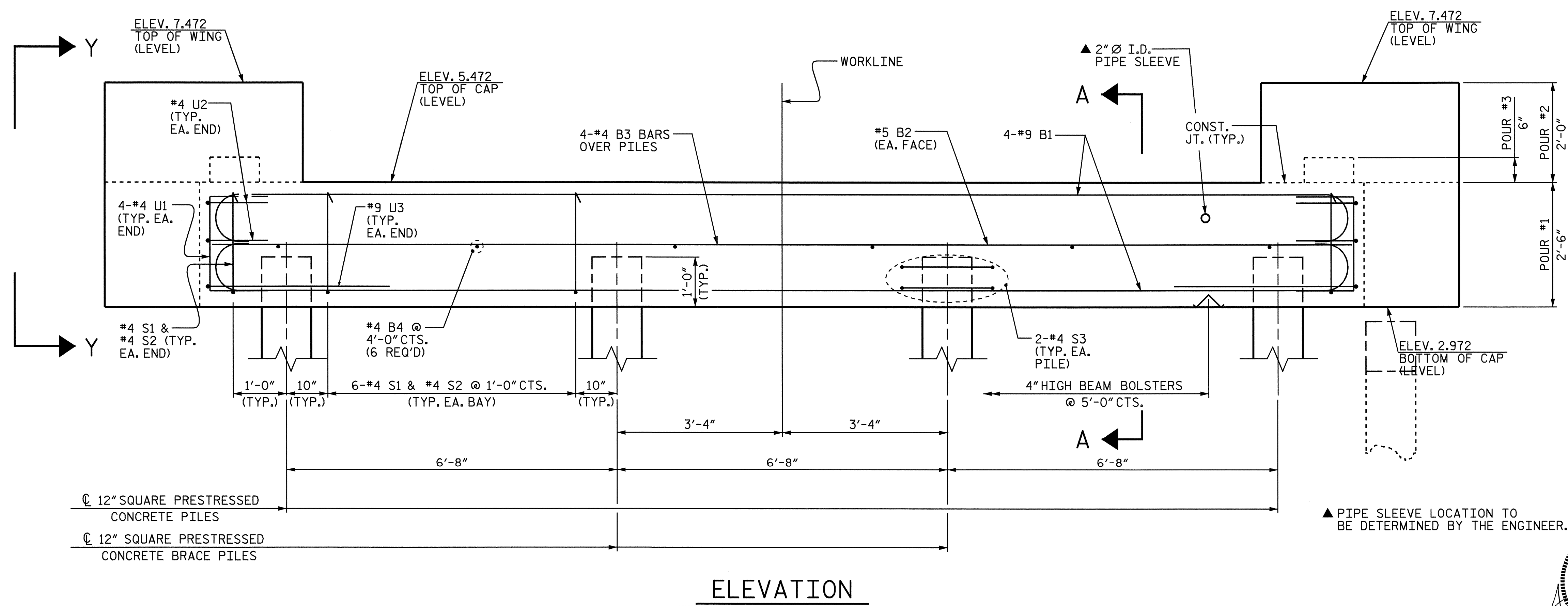
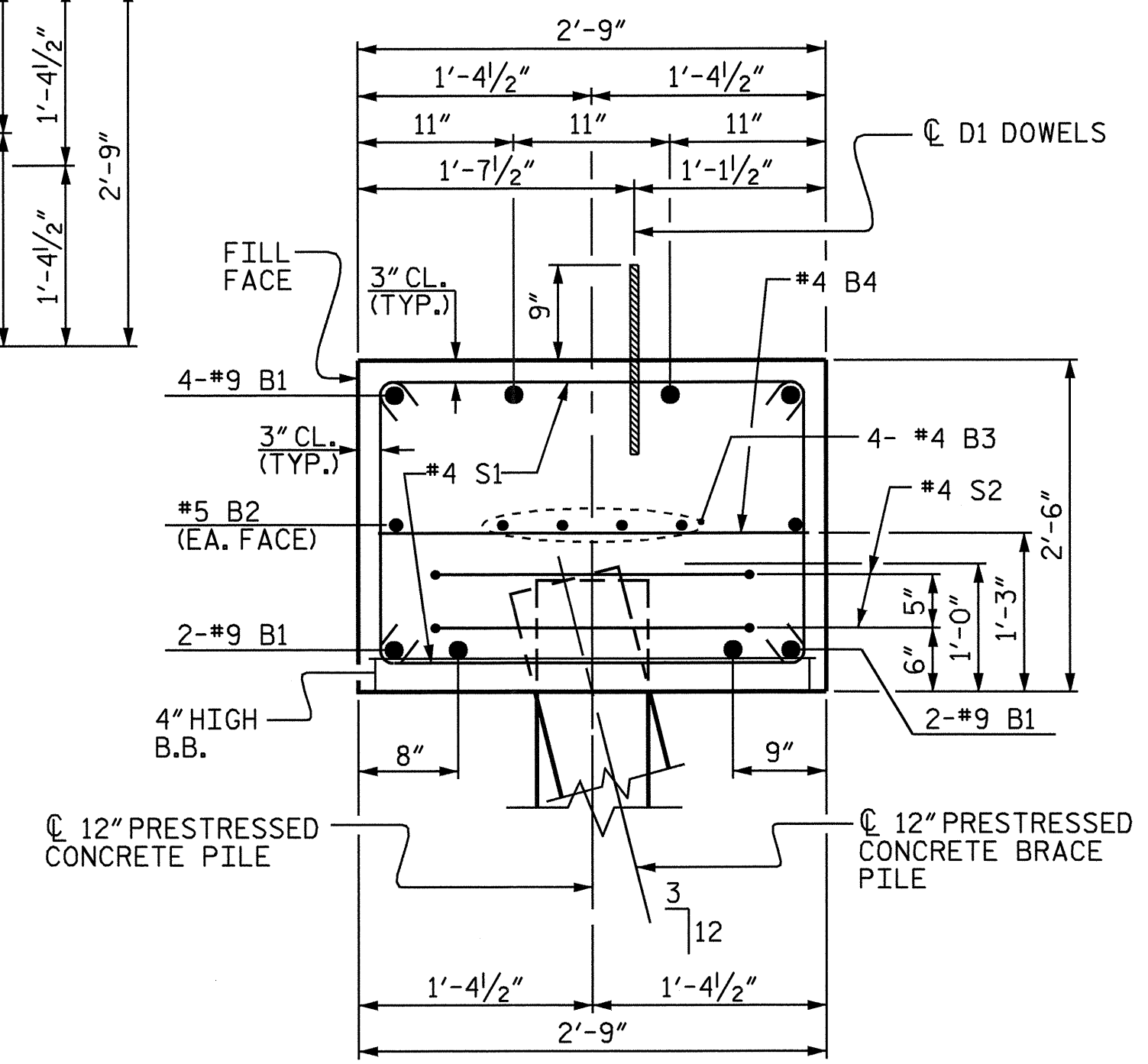
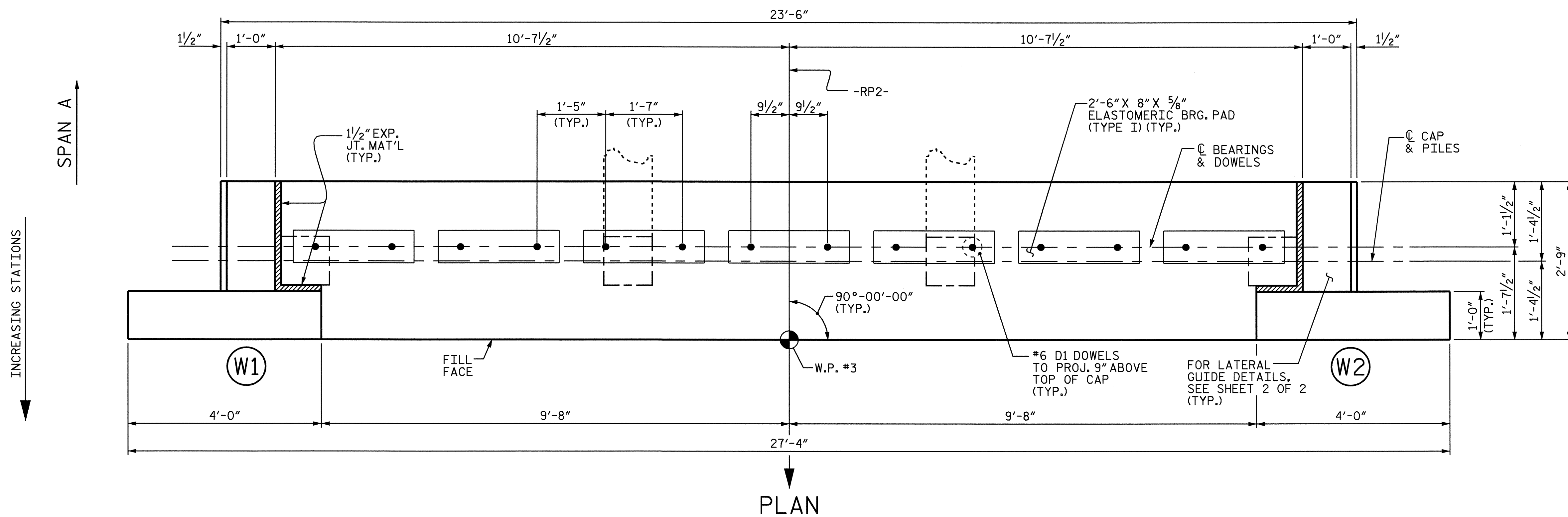
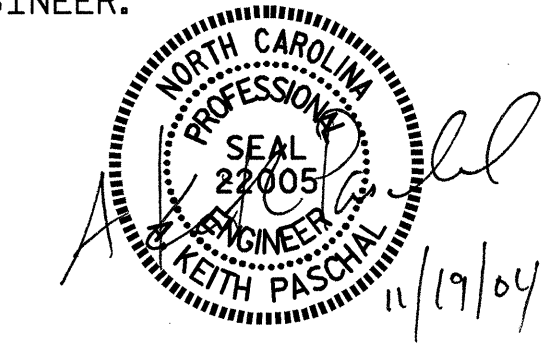


NOTES

STIRRUPS IN CAP MAY BE SHIFTED AS NECESSARY TO CLEAR DOWELS.
 ALL REINFORCING STEEL SHALL BE EPOXY COATED.
 THE LATERAL GUIDE AT EACH END OF THE CAP IS NOT TO BE POURED UNTIL AFTER THE CORED SLAB UNITS ARE IN PLACE.
 FOR EPOXY PROTECTIVE COATING, SEE SPECIAL PROVISIONS.



▲ PIPE SLEEVE LOCATION TO BE DETERMINED BY THE ENGINEER.



PROJECT NO. F-4700
 CURRITUCK COUNTY
 STATION: 10+00.00 -RP2-

SHEET 1 OF 2

STATE OF NORTH CAROLINA
 DEPARTMENT OF TRANSPORTATION
 RALEIGH

SUBSTRUCTURE
 END BENT
 KNOTTS ISLAND FERRY BASIN

REVISIONS						SHEET NO. S-49
NO.	BY:	DATE:	NO.	BY:	DATE:	
1			3			TOTAL SHEETS 56
2			4			

DRAWN BY: K. McCAULEY DATE: 9/17/04
 CHECKED BY: O. PUIGCERVER DATE: 9/17/04