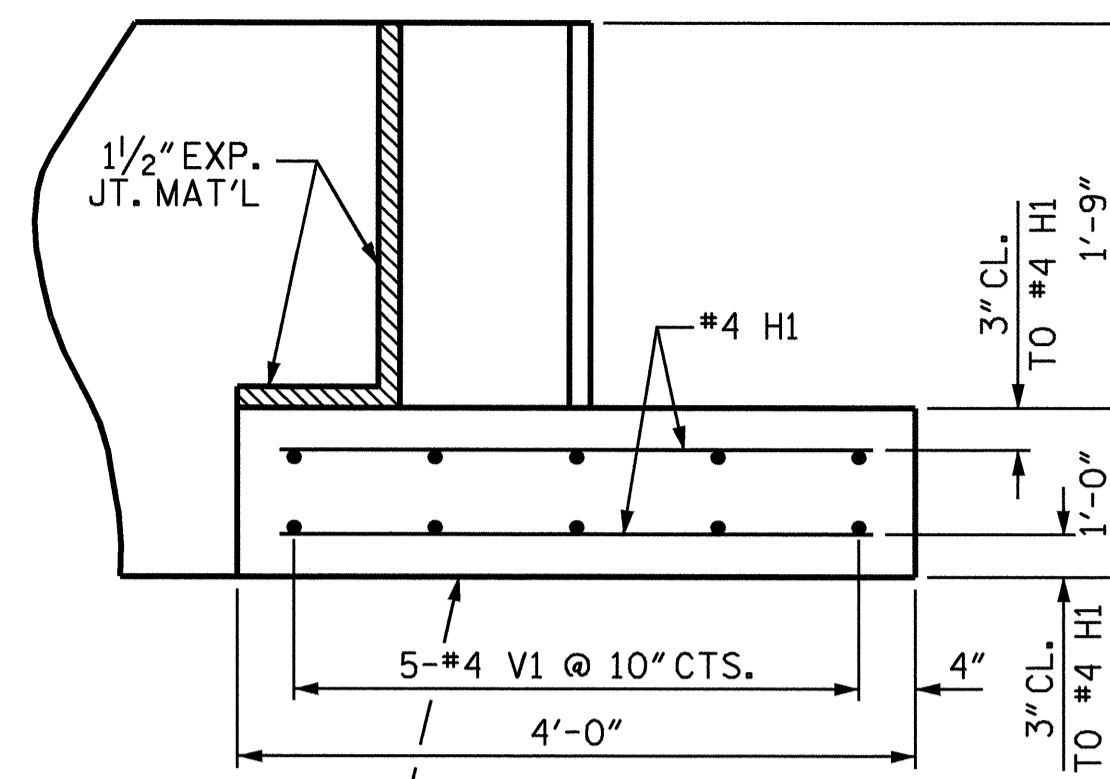
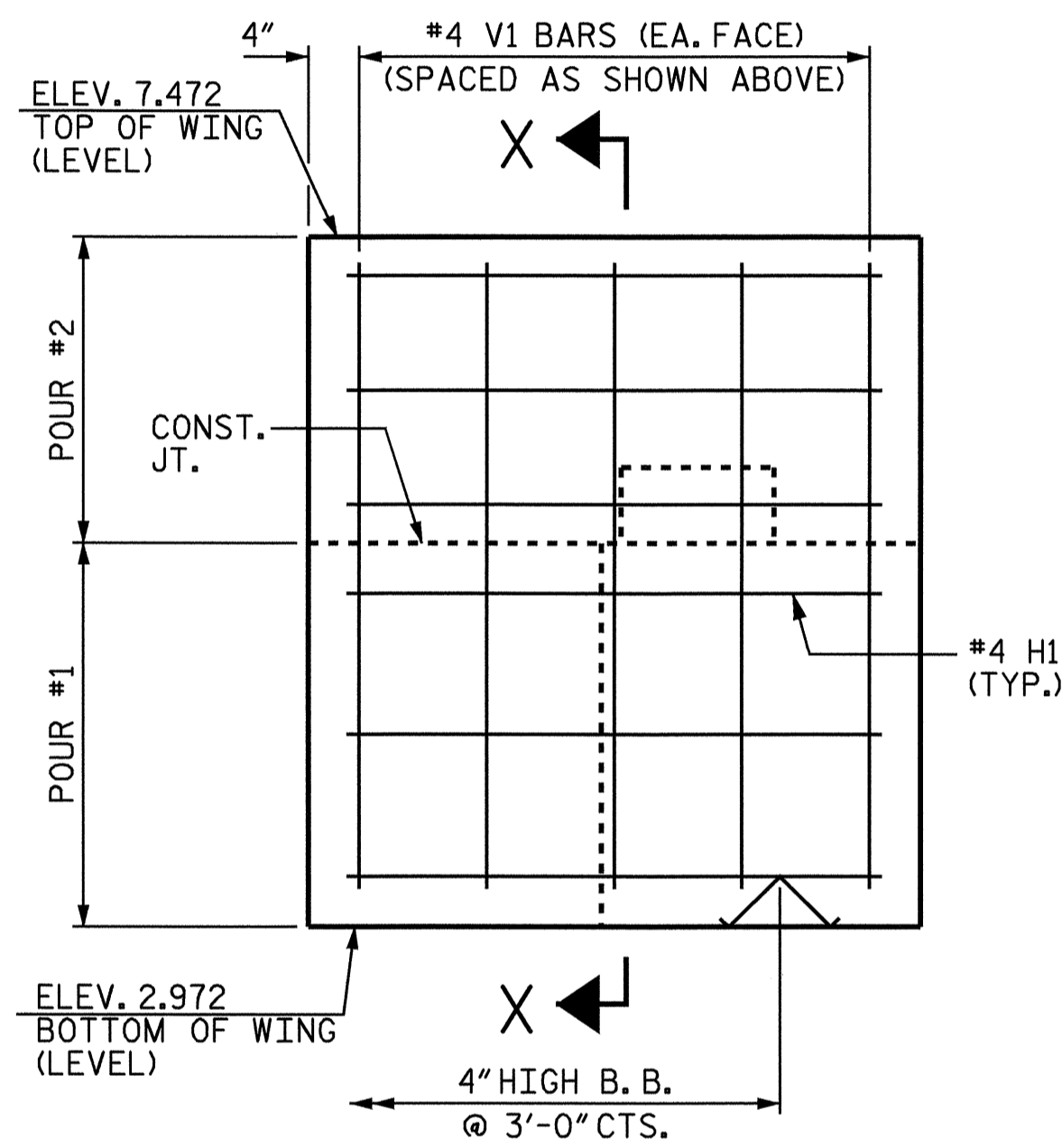


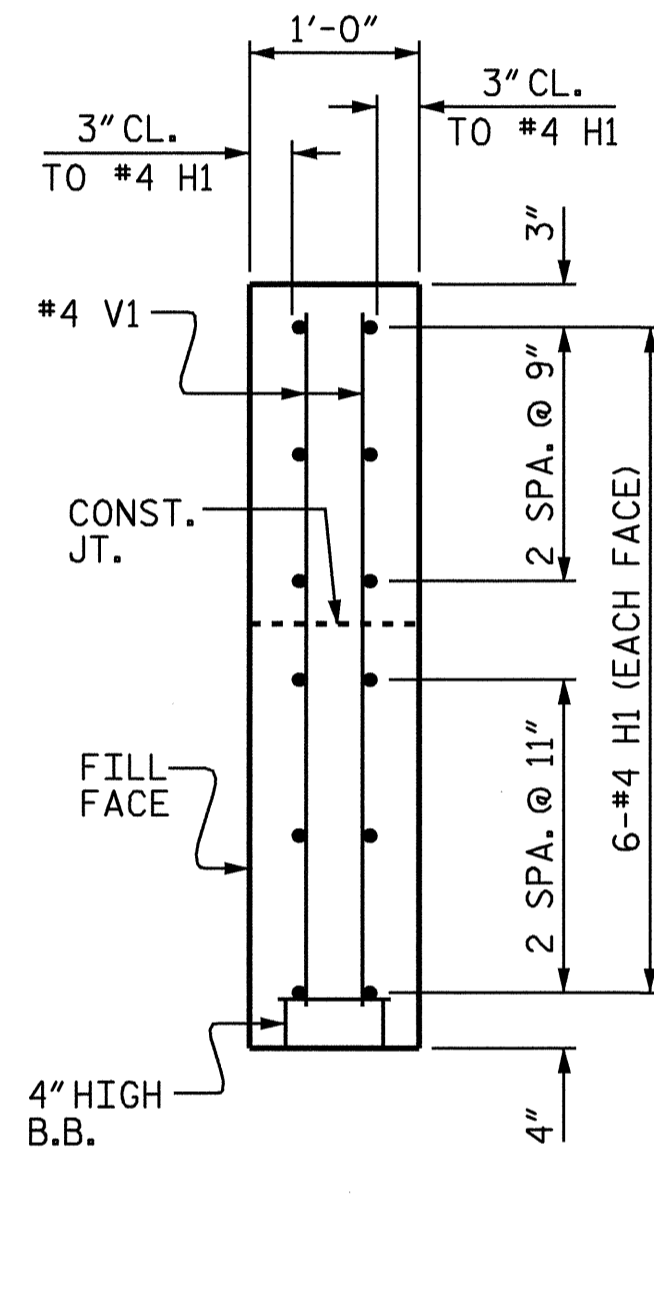
PLAN (W1)



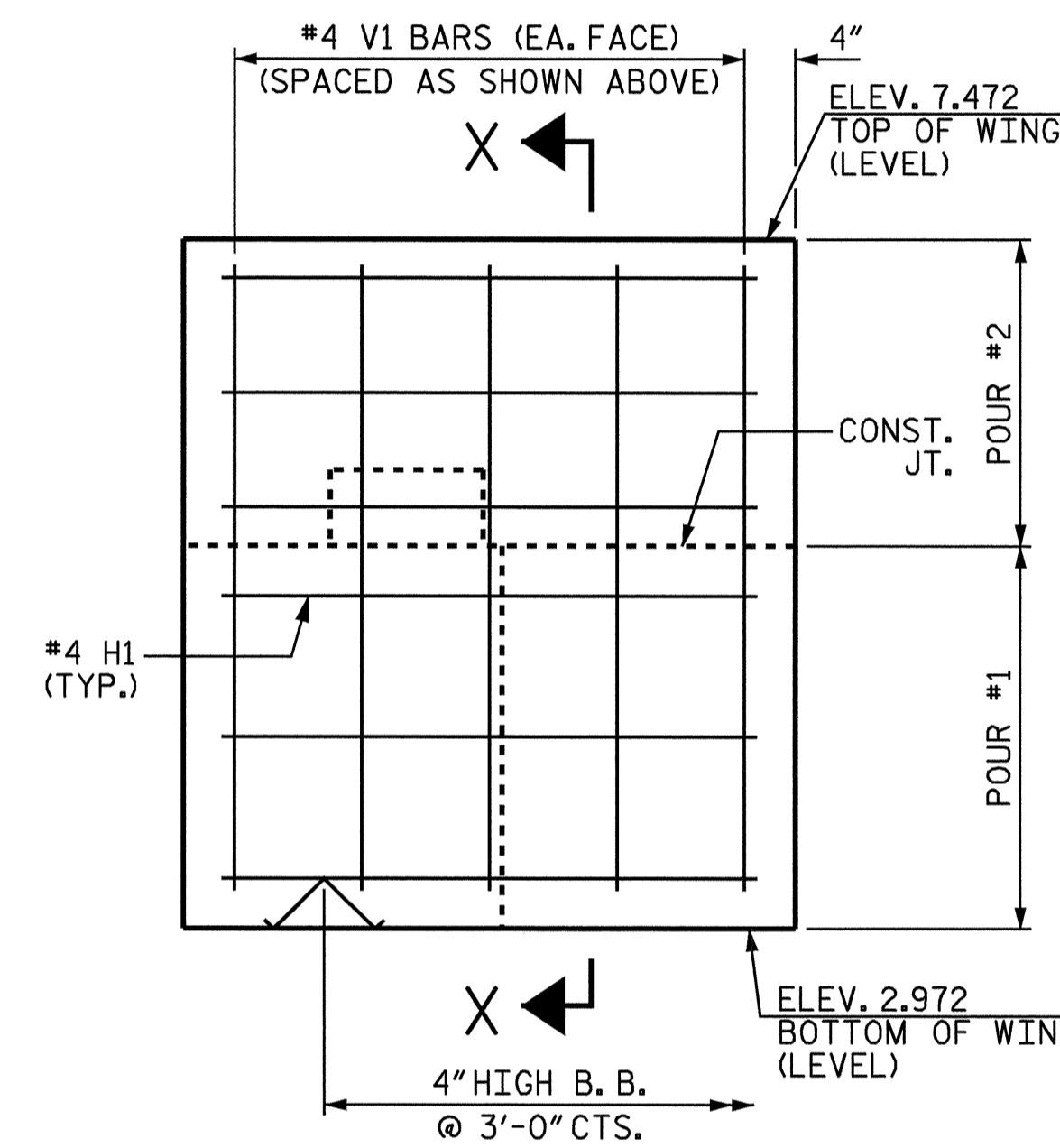
PLAN (W2)



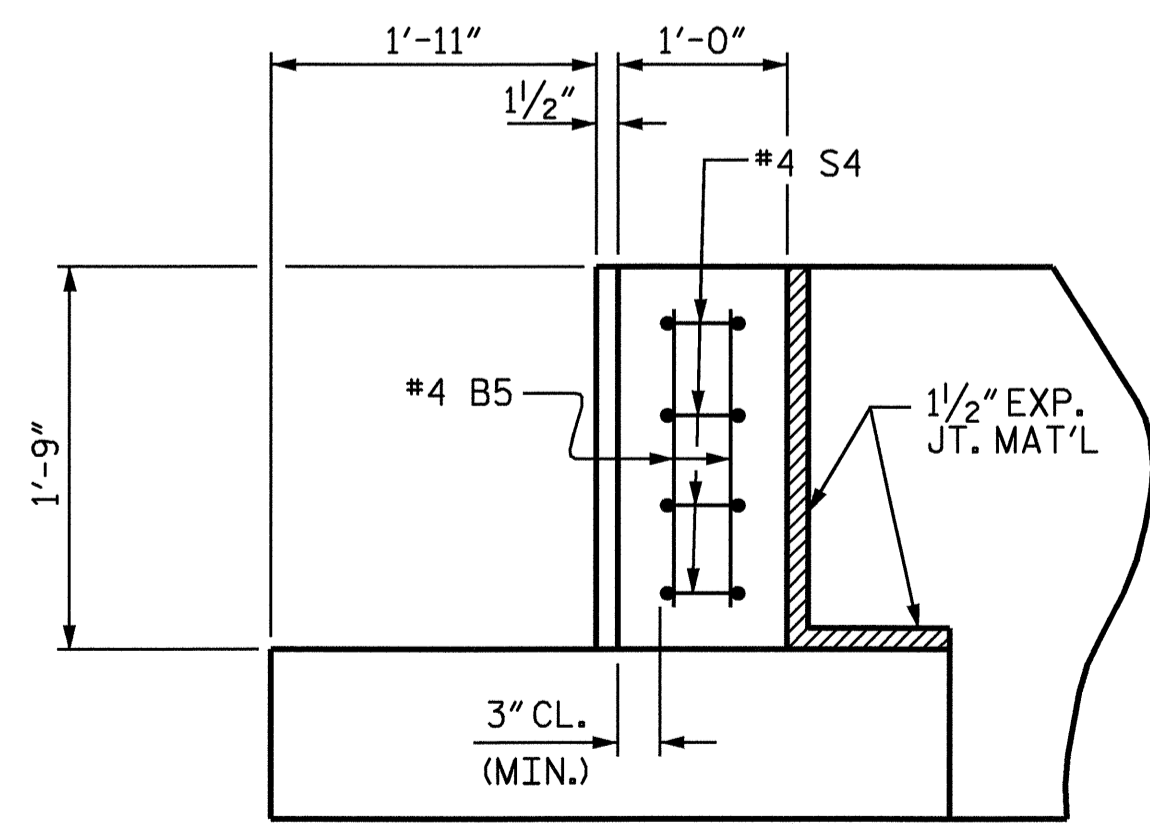
ELEVATION (W1)



SECTION X-X

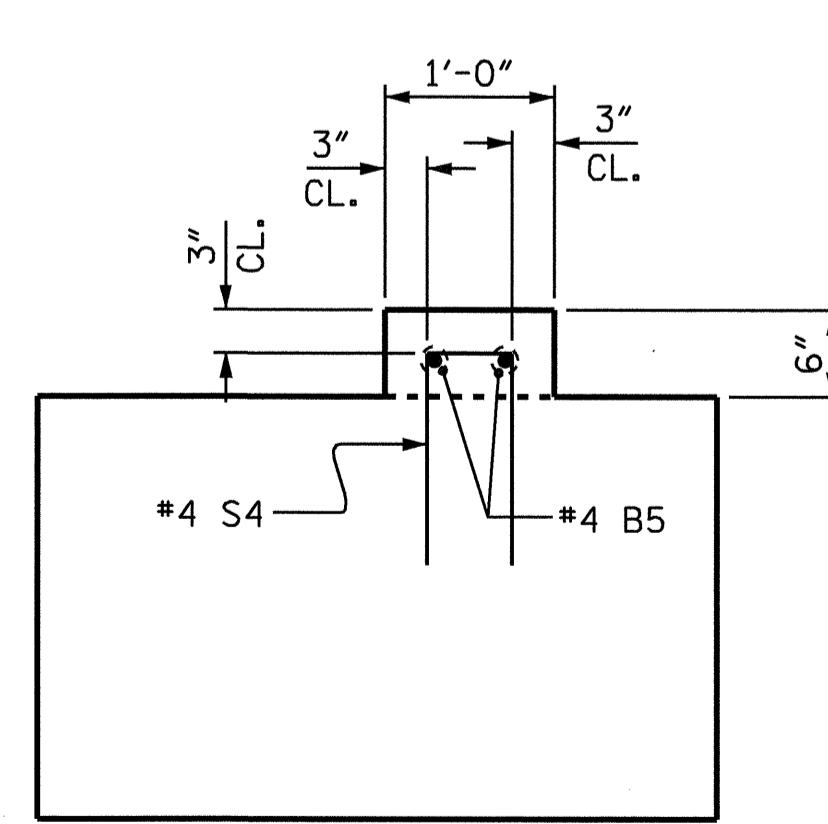


ELEVATION (W2)



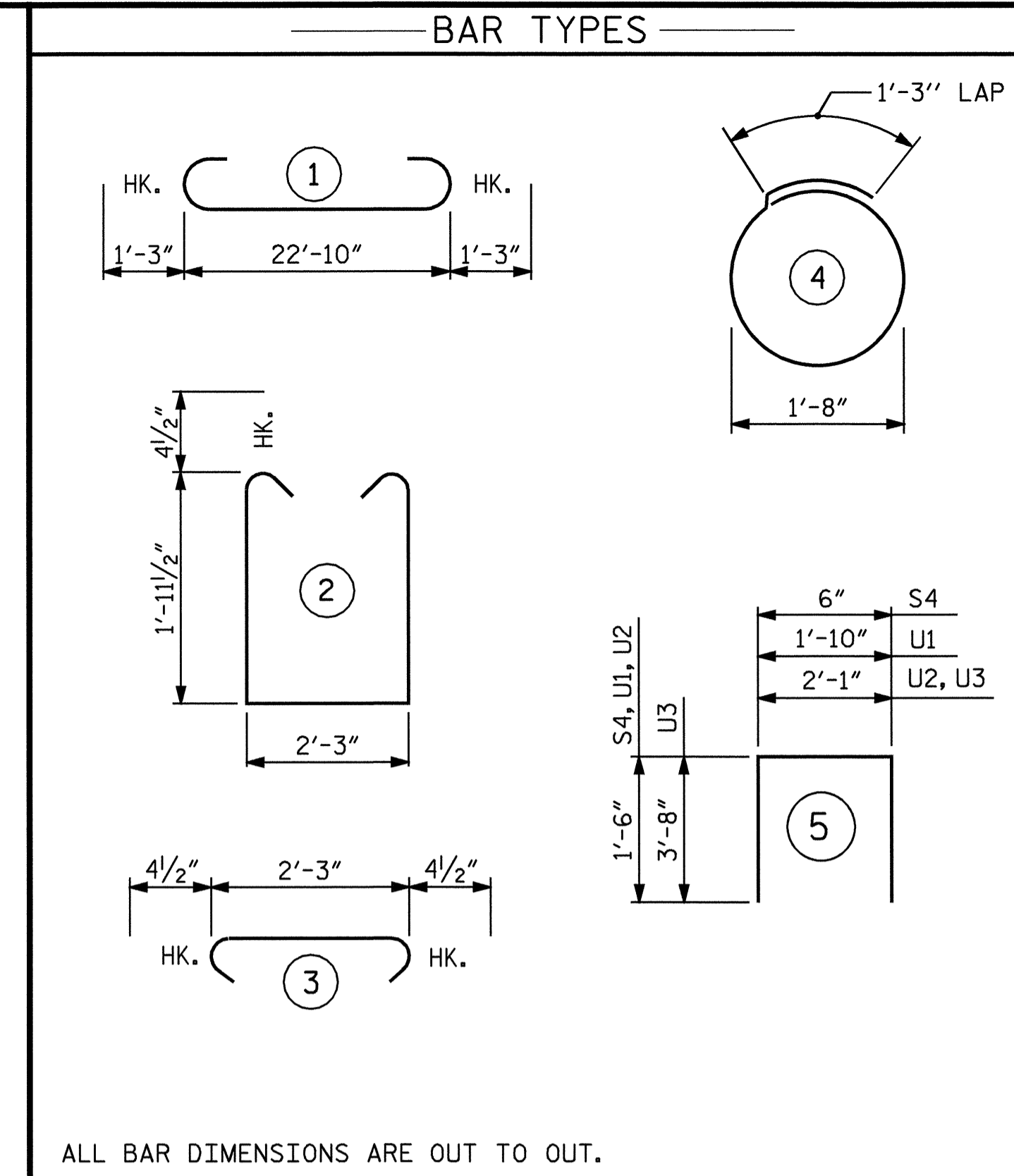
PLAN

(RIGHT SIDE SHOWN, LEFT SIDE SIMILAR)



ELEVATION

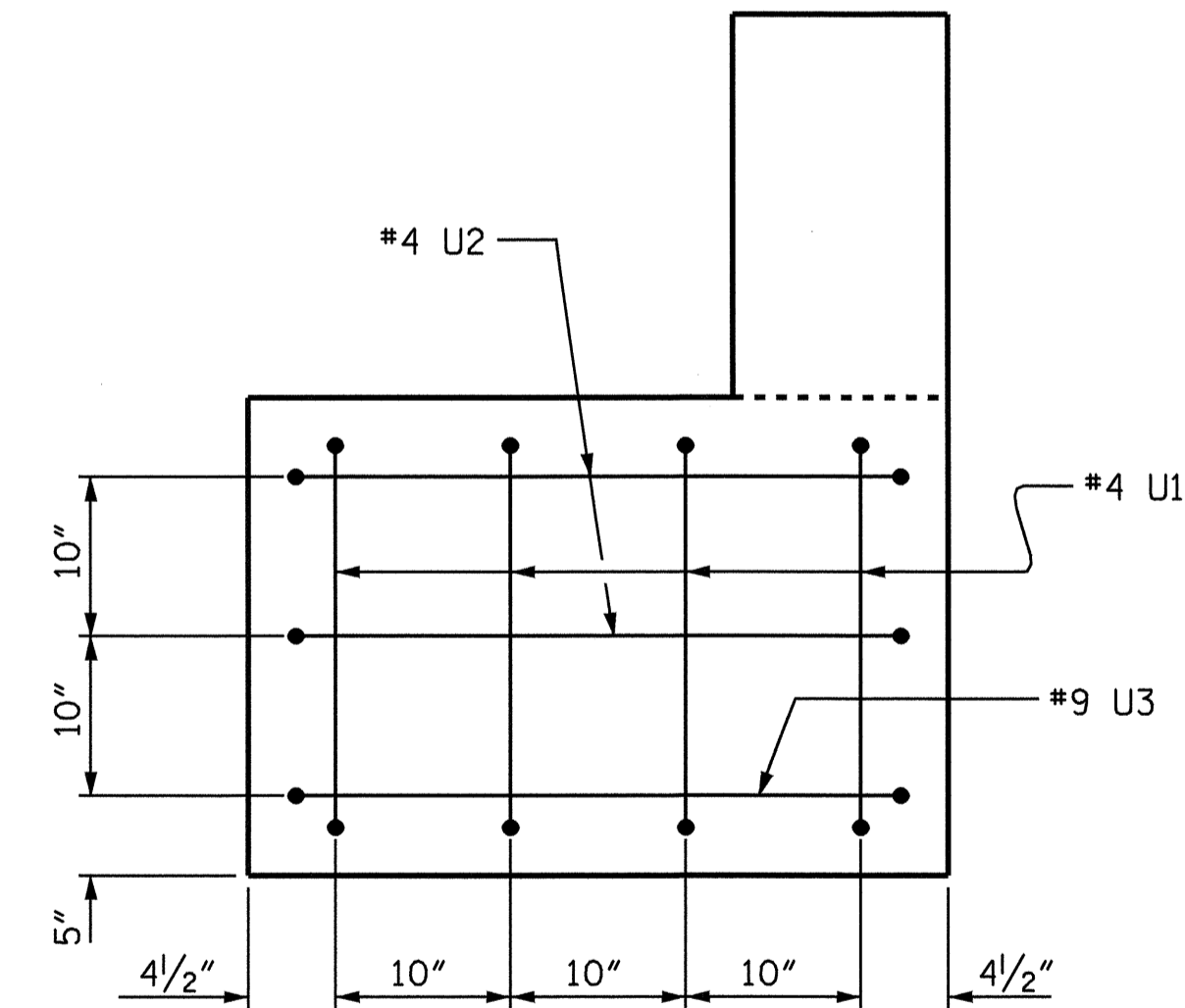
LATERAL GUIDE



ALL BAR DIMENSIONS ARE OUT TO OUT.

BILL OF MATERIAL					
END BENT					
BAR	NO.	SIZE	TYPE	LENGTH	WEIGHT
B1	8	9	1	25- 4	689
B2	2	5	STR	23- 0	48
B3	4	4	STR	23- 0	61
B4	6	4	STR	2- 3	9
B5	4	4	STR	1- 3	3
D1	14	6	STR	1- 6	32
H1	24	4	STR	3- 6	56
S1	20	4	2	6-11	92
S2	20	4	3	3- 0	40
S3	8	4	4	6- 6	35
S4	8	4	5	3- 6	19
U1	8	4	5	4-10	26
U2	4	4	5	5- 2	14
U3	2	9	5	9 -5	64
V1	20	4	STR	4- 0	53
REINFORCING STEEL				1241 LBS.	
CLASS AA CONCRETE (CU. YDS.)					
POUR #1 ▲ CAP & LOWER WING				6.2	
POUR #2 UPPER WING				0.6	
POUR #3 LATERAL GUIDES				0.1	
TOTAL				6.9	
12" SQUARE PRESTRESSED CONC. PILES					
NO. 4 (LIN. FT.)				40.0	

▲ CONCRETE THAT IS DISPLACED BY THE 12" PRESTRESSED CONCRETE PILES HAS BEEN DEDUCTED FROM THIS QUANTITY.

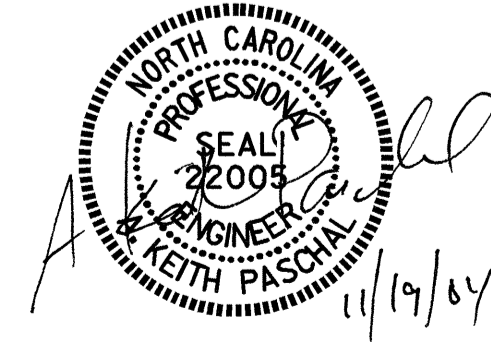


VIEW Y-Y

PROJECT NO. F-4700
 CURRITUCK COUNTY
 STATION: 10+00.00 -RP2-

SHEET 2 OF 2

STATE OF NORTH CAROLINA
 DEPARTMENT OF TRANSPORTATION
 RALEIGH
 SUBSTRUCTURE
 END BENT
 KNOTTS ISLAND FERRY BASIN



REVISIONS						SHEET NO. S-50
NO.	BY:	DATE:	NO.	BY:	DATE:	
1			3			TOTAL SHEETS
2			4			56

DRAWN BY: K. MCCAULEY DATE: 9/17/04
 CHECKED BY: O. PUIGSERVER DATE: 10/5/04