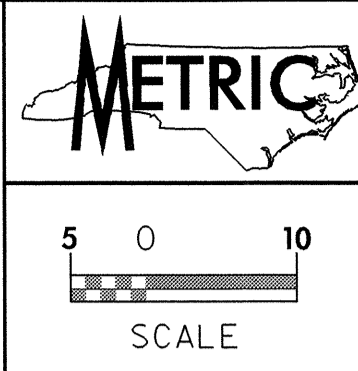


PROJECT REFERENCE NO.	U-2912	SHEET NO.	UC-2
DESIGNED BY:	CSG		
DRAWN BY:	MRB		
CHECKED BY:	RBW		
APPROVED BY:	RBW		
REVISED:			
NORTH CAROLINA DEPARTMENT OF TRANSPORTATION			
DESIGN SERVICES UNIT PHONE: (919) 250-4128 FAX: (919) 250-4119			
UTILITY CONSTRUCTION PLANS ONLY			



UTILITY CONSTRUCTION

COUNTY OF CUMBERLAND
DB 4732 PG 281
DB 4609 PG 420
DB 4628 PG 828

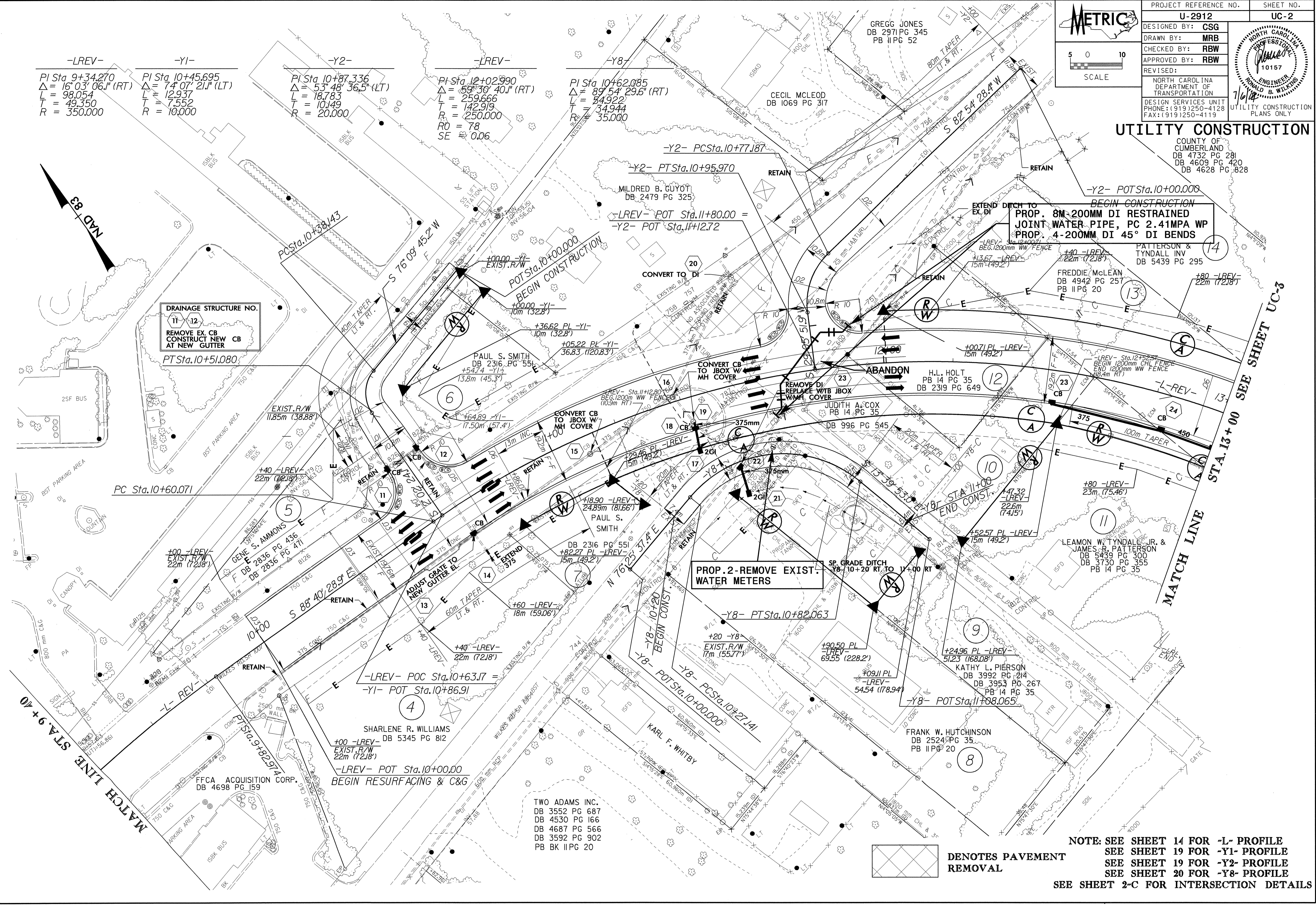
-LREV-
PI Sta 9+34.270
Δ = 16° 03' 06.1" (RT)
L = 98.054
T = 49.350
R = 350.000

-Y1-
PI Sta 10+45.695
Δ = 74° 07' 21.1" (LT)
L = 12.937
T = 7.552
R = 10.000

-Y2-
PI Sta 10+87.336
Δ = 53° 48' 36.5" (LT)
L = 18.783
T = 10.149
R = 20.000

-LREV-
PI Sta 10+02.990
Δ = 58° 30' 40.1" (RT)
L = 259.666
T = 142.919
R = 250.000
RO = 78
SE = 0.06

-Y8-
PI Sta 10+62.085
Δ = 89° 54' 29.6" (RT)
L = 34.922
T = 34.944
R = 35.000

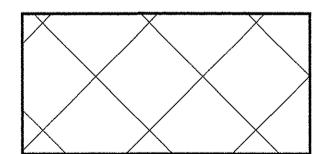


DRAINAGE STRUCTURE NO.
11-12
REMOVE EX. CB
CONSTRUCT NEW CB
AT NEW GUTTER

PROP. 2-REMOVE EXIST. WATER METERS

BEGIN CONSTRUCTION
PROP. 8M-200MM DI RESTRAINED JOINT WATER PIPE, PC 2.41MPA WP
PROP. 4-200MM DI 45° DI BENDS

NOTE: SEE SHEET 14 FOR -L- PROFILE
SEE SHEET 19 FOR -Y1- PROFILE
SEE SHEET 19 FOR -Y2- PROFILE
SEE SHEET 20 FOR -Y8- PROFILE
SEE SHEET 2-C FOR INTERSECTION DETAILS



DENOTES PAVEMENT REMOVAL