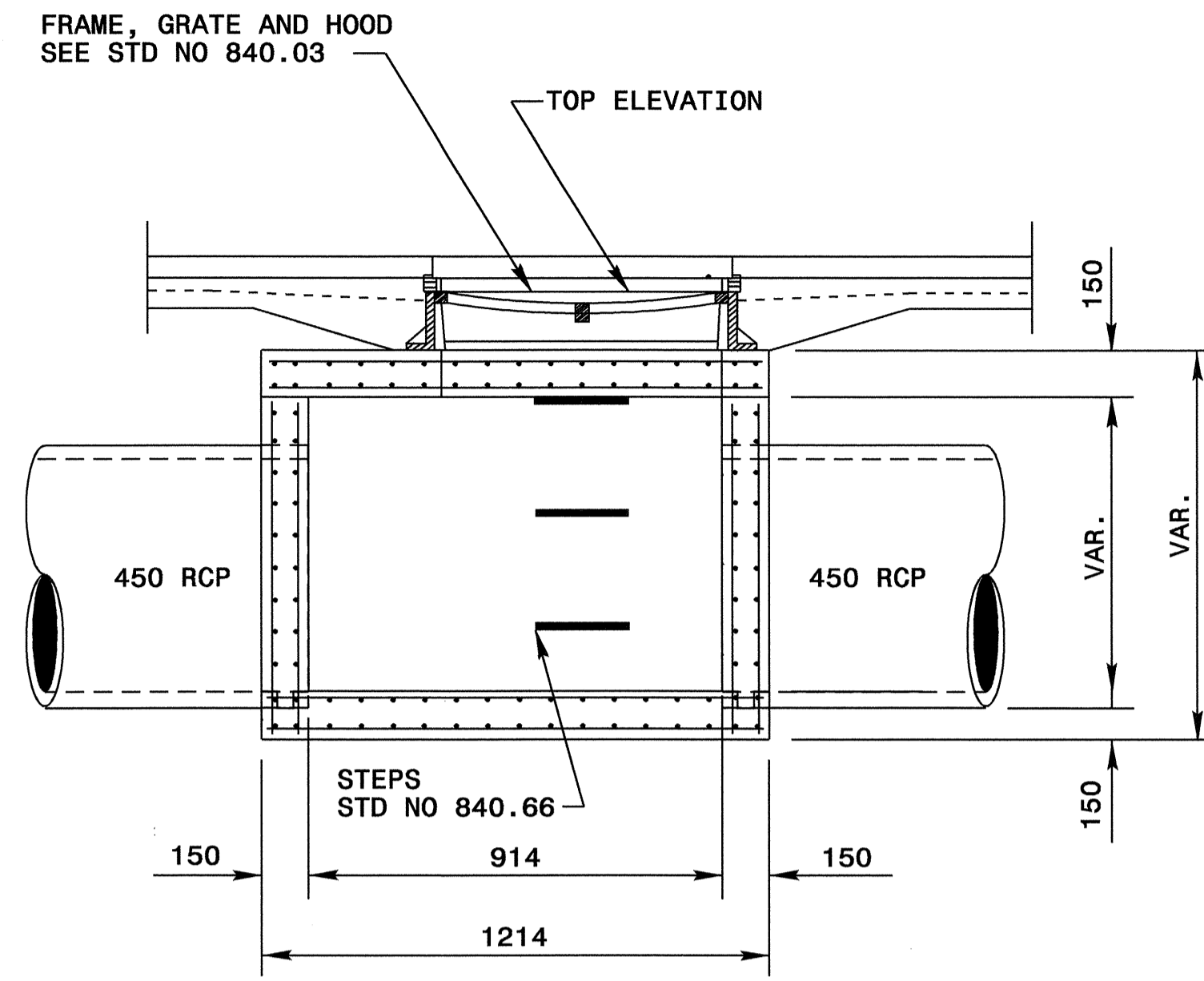
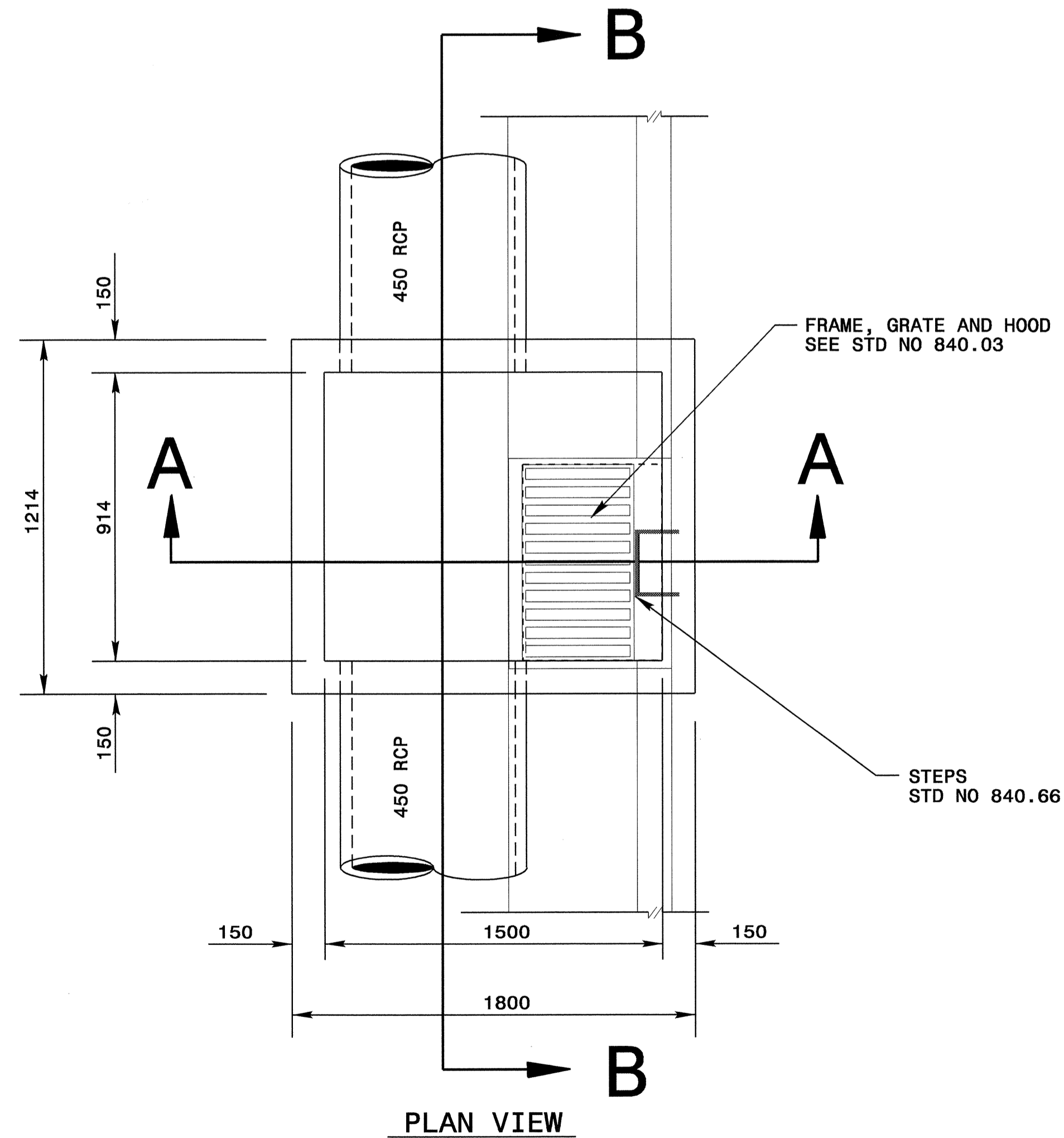


SECTION A-A



SECTION B-B



PLAN VIEW

- NOTES:**
1. USE CLASS 'B' CONCRETE THROUGHOUT.
  2. CONSTRUCT CONCRETE BOX IN ACCORDANCE WITH SECTION 825 OF THE STANDARD SPECIFICATIONS AND MAY BE ADJUSTED TO FIT PIPE CONDITION.
  3. USE FORMS FOR CONSTRUCTION OF THE BOTTOM SLAB.
  4. ADJUST LENGTH OF STEEL BARS AS NEEDED TO COMPENSATE FOR PIPES.
  5. CONFORM REINFORCING STEEL TO ASTM A615, GRADE 400.
  6. CUT OR BEND STEEL BARS AS NEEDED TO PROVIDE 50mm CLEARANCE AROUND PIPES OR AS DIRECTED BY THE ENGINEER.
  7. ADJUST HEIGHT, WIDTH AND DEPTH DIMENSIONS OF CATCH BASIN IN THE FIELD AS DIRECTED BY THE ENGINEER.
  8. SLAB AND WALL THICKNESS CAN NOT BE ADJUSTED.
  9. FRAME AND GRATE LOCATED AS FIELD CONDITION DICTATES AND DIRECTED BY THE ENGINEER.
  10. USE TEMPORARY STEEL COVER FOR TRAFFIC CONTROL AS DIRECTED BY THE ENGINEER.

**BILL OF MATERIALS**

BAR	NO.	SIZE	LENGTH	WEIGHT
A	104	#5	176.8m	266
B	112	#5	124.8m	188
C	36	#5	28.8m	44
			<b>TOTAL REINF. STEEL (kilos)</b>	<b>498</b>
			<b>CONC. (cu.m)</b>	
<b>DEDUCTIONS FOR PIPES</b>				
			2-450mm RCP @ 0.03 cu.m	-0.06
			<b>TOTAL CONC. (cu.m)</b>	<b>1.2</b>

NO DEDUCTIONS HAVE BEEN MADE TO ACCOMMODATE CATCH BASIN OPENING.



**DESIGN SERVICES UNIT  
STANDARDS AND SPECIAL DESIGN**  
Office 919-250-4128 FAX 919-250-4119

**CB DETAIL**

ORIGINAL BY: rnbritt DATE: 07-23-04  
 MODIFIED BY: rnbritt DATE: 07-23-04  
 CHECKED BY: J.S. Howerton DATE: 9/17/04  
 FILE SPEC.: details/nbritt/metric/murban/u2912cb.dgn

**Note:**  
 This drawing is dimensioned in millimeters unless otherwise depicted within the drawing.