

METRIC

PROJECT REFERENCE NO. U-2912 SHEET NO. 6

R/W SHEET NO.

ROADWAY DESIGN ENGINEER
 NORTH CAROLINA PROFESSIONAL ENGINEER
 SEAL 14493
 JAMES SAFFORD GOODRICH

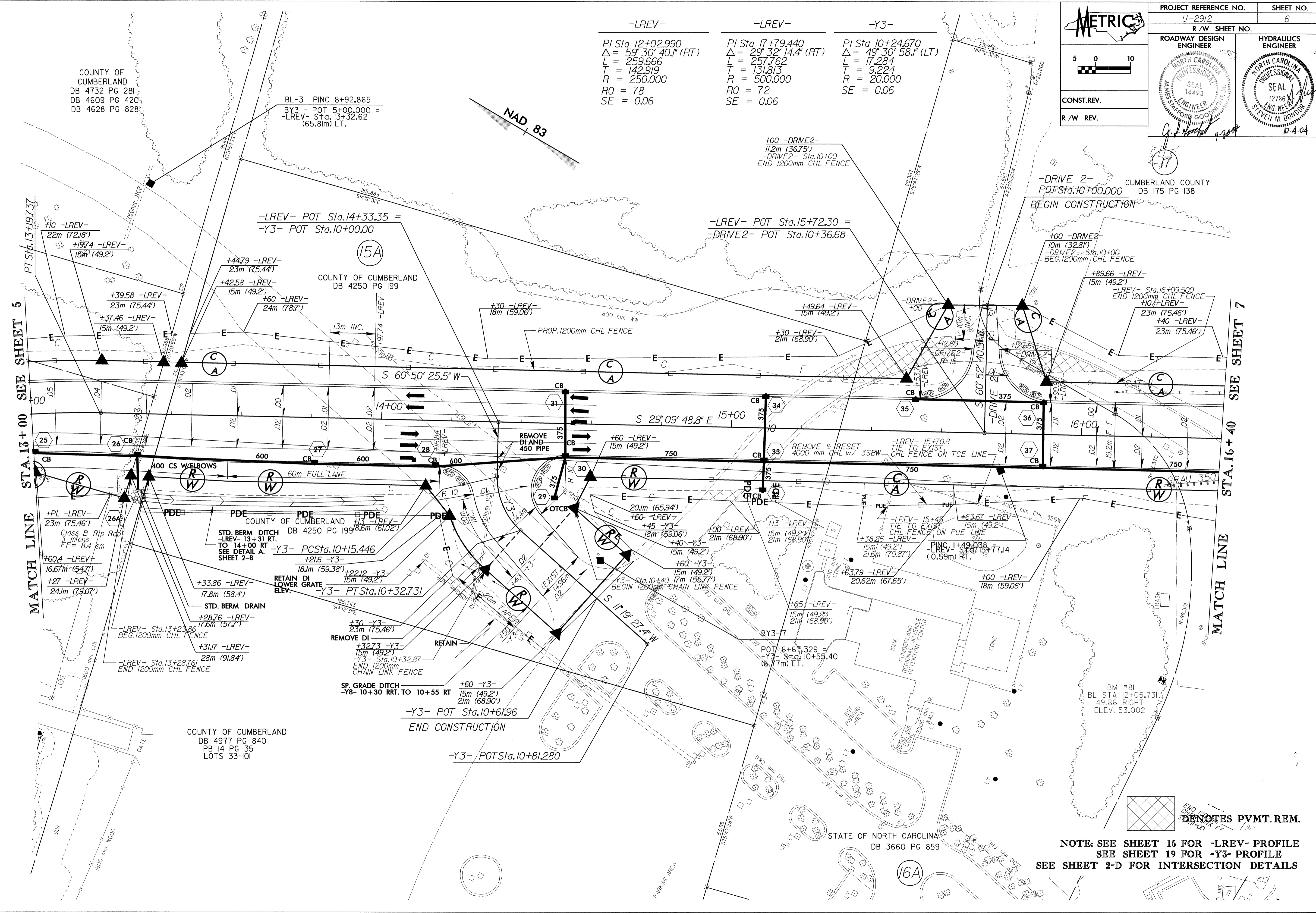
HYDRAULICS ENGINEER
 NORTH CAROLINA PROFESSIONAL ENGINEER
 SEAL 12786
 STEVEN M. BONTOR

CONST. REV.

R/W REV.

SCALE: 5 0 10

-LREV-	-LREV-	-Y3-
PI Sta 12+02.990	PI Sta 17+79.440	PI Sta 10+24.670
$\Delta = 59^\circ 30' 40.1''$ (RT)	$\Delta = 29^\circ 32' 14.4''$ (RT)	$\Delta = 49^\circ 30' 58.1''$ (LT)
L = 259.666	L = 257.762	L = 17.284
T = 142.919	T = 131.813	T = 9.224
R = 250.000	R = 500.000	R = 20.000
RO = 78	RO = 72	SE = 0.06
SE = 0.06	SE = 0.06	



REVISIONS

MATCH LINE STA. 13+00 SEE SHEET 5

MATCH LINE STA. 16+40 SEE SHEET 7

END OF DRIVE 2 DENOTES PVMT. REM.

NOTE: SEE SHEET 15 FOR -LREV- PROFILE
 SEE SHEET 19 FOR -Y3- PROFILE
 SEE SHEET 2-D FOR INTERSECTION DETAILS

9-OCT-2004 09:31
 T:\2912\RD203024