

**METRIC**

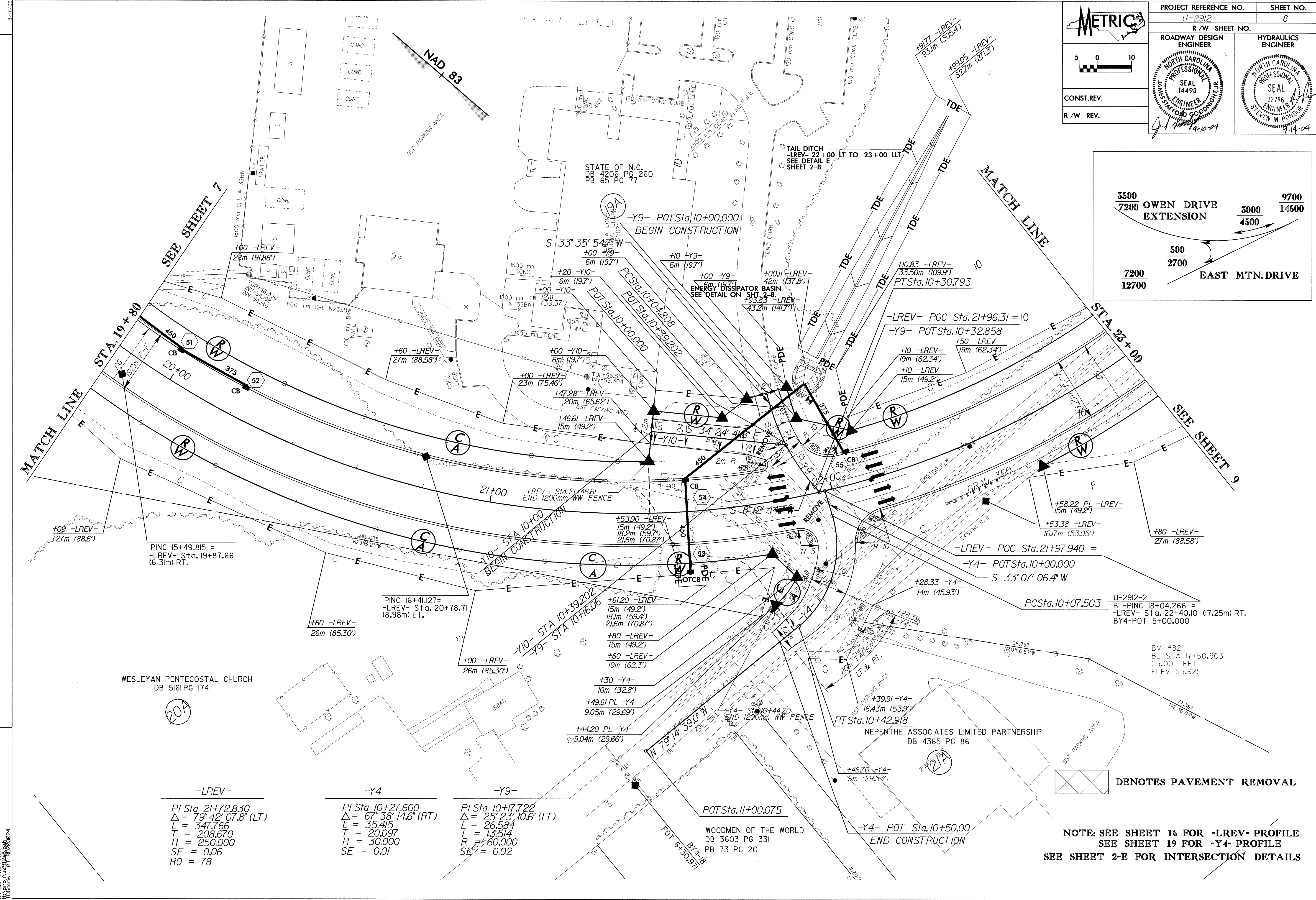
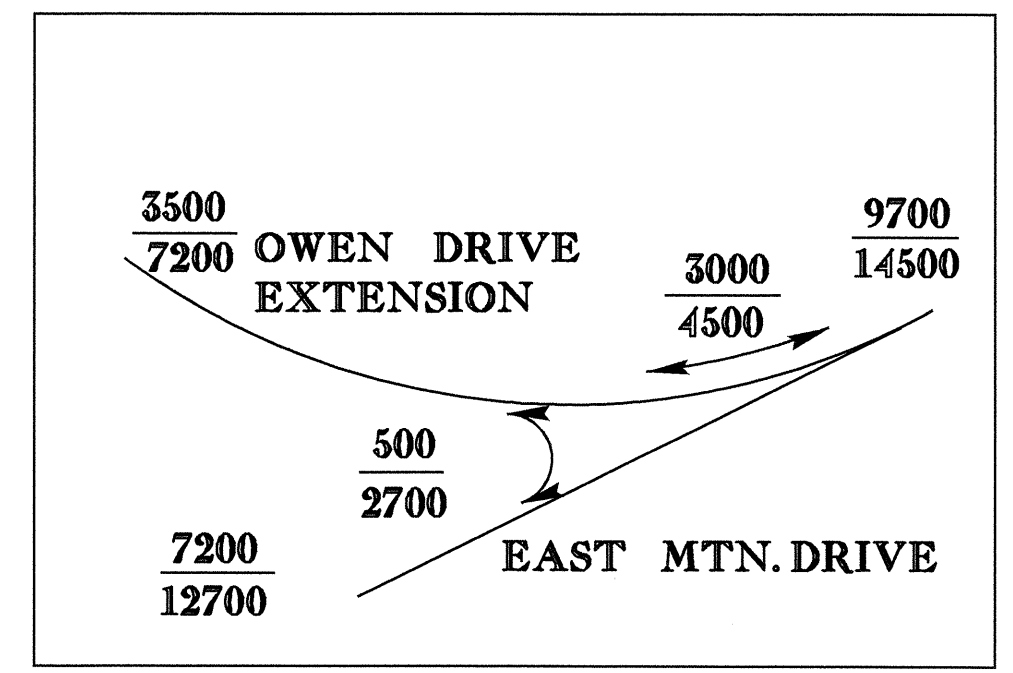
PROJECT REFERENCE NO. U-2912 SHEET NO. 8

R/W SHEET NO.

ROADWAY DESIGN ENGINEER  
 NORTH CAROLINA PROFESSIONAL SEAL  
 JAMES STAFFORD GODDING JR.  
 14493  
 9-10-04

HYDRAULICS ENGINEER  
 NORTH CAROLINA PROFESSIONAL SEAL  
 STEVEN M. BONDUR  
 12786  
 9-14-04

CONST. REV.  
 R/W REV.



-LREV-	-Y4-	-Y9-
PI Sta 21+72.830	PI Sta 10+27.600	PI Sta 10+17.722
$\Delta = 79^\circ 42' 07.8''$ (LT)	$\Delta = 67^\circ 38' 14.6''$ (RT)	$\Delta = 25^\circ 23' 10.6''$ (LT)
L = 347.766	L = 35.415	L = 26.584
T = 208.670	T = 20.097	T = 13.514
R = 250.000	R = 30.000	R = 60.000
SE = 0.06	SE = 0.01	SE <sub>EXT</sub> = 0.02
RO = 78		

DENOTES PAVEMENT REMOVAL

NOTE: SEE SHEET 16 FOR -LREV- PROFILE  
 SEE SHEET 19 FOR -Y4- PROFILE  
 SEE SHEET 2-E FOR INTERSECTION DETAILS

REVISIONS

09-SEP-2004 1451  
 RD203024  
 TDGoins AT R12282824