

	PROJECT REFERENCE NO.	SHEET NO.
	U-2912	9
ROADWAY DESIGN ENGINEER		HYDRAULICS ENGINEER
CONST. REV.		R/W REV.

-LREV-
 PI Sta 21+72.830
 $\Delta = 79^{\circ} 42' 07.8''$ (LT)
 L = 347.766
 T = 208.670
 R = 250.000
 RO = 72
 SE = 0.06

-Y5-
 PI Sta 11+79.969
 $\Delta = 66^{\circ} 14' 35.3''$ (LT)
 L = 173.424
 T = 97.864
 R = 150.000
 SE = EXIST.

-LREV-
 PI Sta 24+18.033
 $\Delta = 0^{\circ} 36' 56.7''$ (LT)
 L = 75.228
 T = 37.614
 R = 7,000.000
 SE = NC

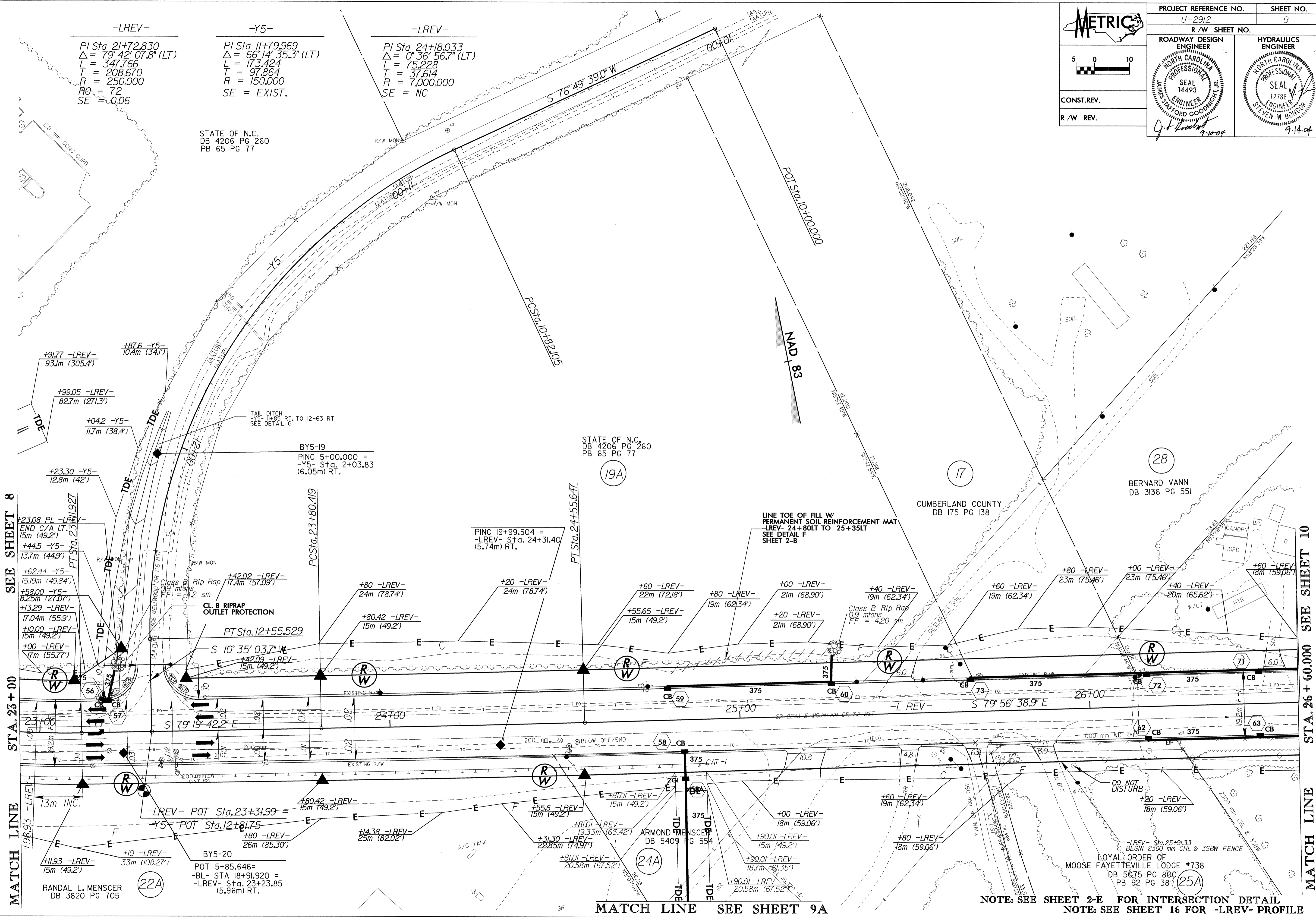
STATE OF N.C.
 DB 4206 PG 260
 PB 65 PG 77

STATE OF N.C.
 DB 4206 PG 260
 PB 65 PG 77

CUMBERLAND COUNTY
 DB 175 PG 138

BERNARD VANN
 DB 3136 PG 551

LOYAL ORDER OF
 MOOSE FAYETTEVILLE LODGE #738
 DB 5075 PG 800
 PB 92 PG 38



REVISIONS

SEE SHEET 8

SEE SHEET 10

MATCH LINE

MATCH LINE

MATCH LINE SEE SHEET 9A

NOTE: SEE SHEET 2-E FOR INTERSECTION DETAIL
 NOTE: SEE SHEET 16 FOR -LREV- PROFILE

08-SEP-2004 14:53
 R:\Projects\U-2912\RD203024