



PROJECT REFERENCE NO. U-2912	SHEET NO. 4
R/W SHEET NO.	
ROADWAY DESIGN ENGINEER	HYDRAULICS ENGINEER
PRELIMINARY PLANS DO NOT USE FOR CONSTRUCTION INCOMPLETE PLANS DO NOT USE FOR R/W ACQUISITION	
CONST. REV.	
R/W REV.	



DATUM DESCRIPTION

THE LOCALIZED COORDINATE SYSTEM DEVELOPED FOR THIS PROJECT IS BASED ON THE STATE PLANE COORDINATES ESTABLISHED BY NCGS FOR MONUMENT "SEVEN"

WITH NAD 83 STATE PLANE GRID COORDINATES OF
 NORTHING: 138173.482(m) EASTING: 622122.922(m)

THE AVERAGE COMBINED GRID FACTOR USED ON THIS PROJECT (GROUND TO GRID) IS: 0.99988431

THE N.C. LAMBERT GRID BEARING AND LOCALIZED HORIZONTAL GROUND DISTANCE FROM "SEVEN" TO -LREV- STATION 6+00.00 IS
 N 50 57' 12.934" W AT 4216.18m

ALL LINEAR DIMENSIONS ARE LOCALIZED HORIZONTAL DISTANCES
 VERTICAL DATUM USED IS NAVD 88

-LREV-

PI Sta 9+34.270
 $\Delta = 16' 03' 06.1''$ (RT)
 L = 98.054
 T = 49.350
 R = 350.000

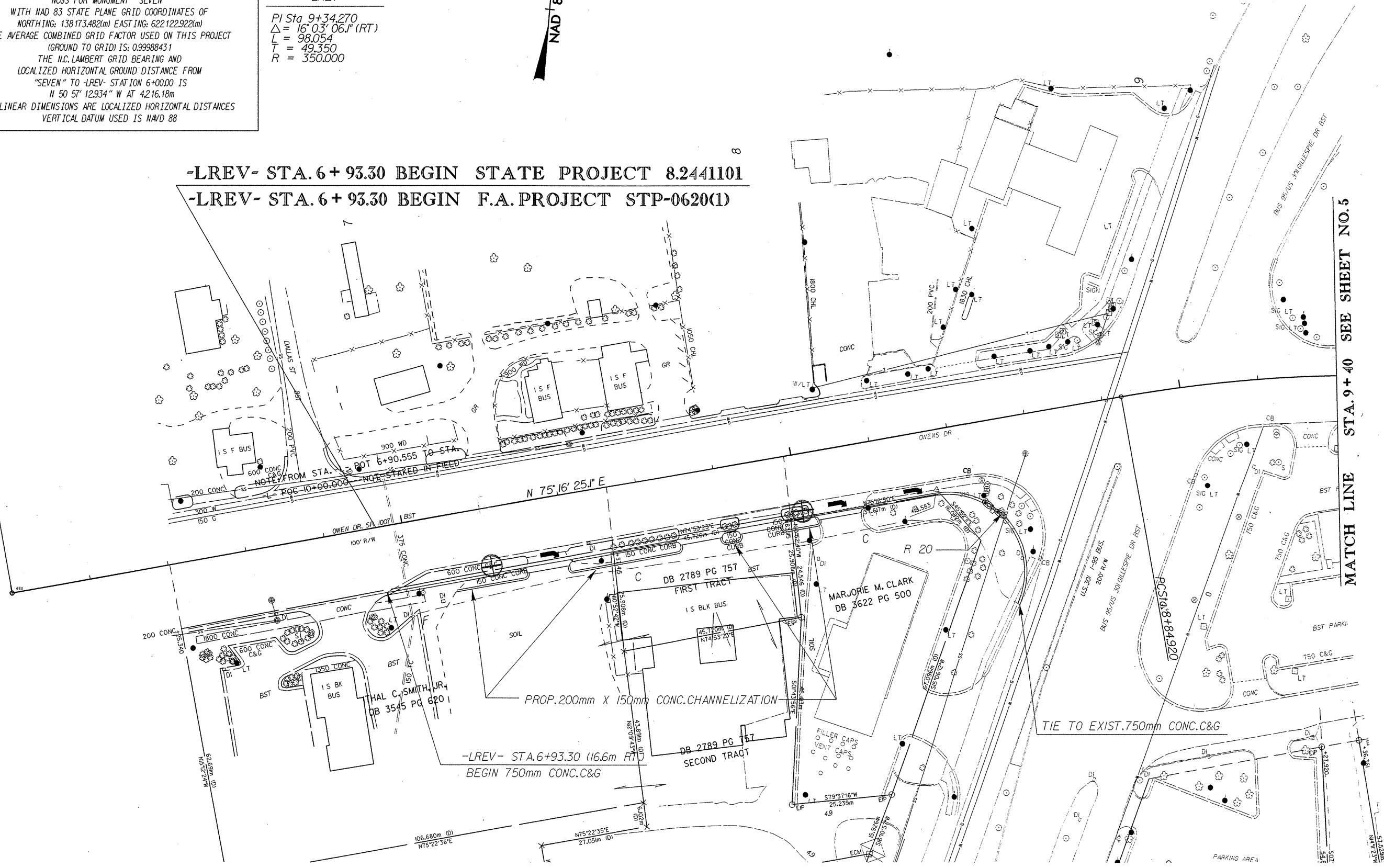


-LREV- STA. 6+93.30 BEGIN STATE PROJECT 8.2441101

-LREV- STA. 6+93.30 BEGIN F.A. PROJECT STP-0620(1)

POT Sta. 6+00.000

6



MATCH LINE STA. 9+40 SEE SHEET NO. 5

REVISIONS

25-APR-2002 09:06
 C:\p01\2002\station\U-2912\4.psh
 10:01:41 AM