

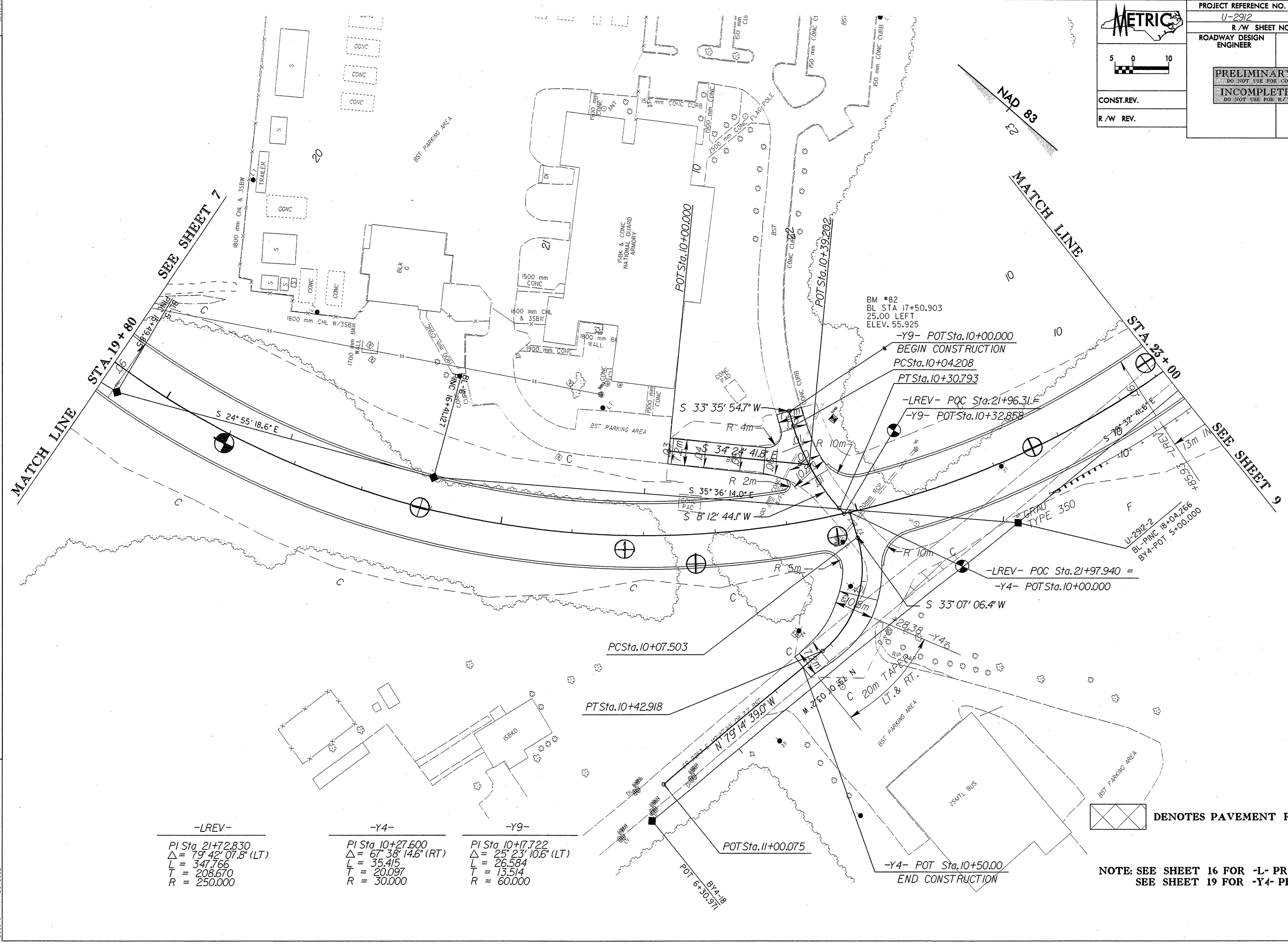
METRIC

5 0 10

CONST.REV.

R/W REV.

| | |
|--|---------------------|
| PROJECT REFERENCE NO. | SHEET NO. |
| U-2912 | 8 |
| R/W SHEET NO. | |
| ROADWAY DESIGN ENGINEER | HYDRAULICS ENGINEER |
| PRELIMINARY PLANS DO NOT USE FOR CONSTRUCTION INCOMPLETE PLANS DO NOT USE FOR R/W ACQUISITION | |



REVISIONS

| | | |
|------------------------|------------------------|------------------------|
| -LREV- | -Y4- | -Y9- |
| PI Sta 21+72.830 | PI Sta 10+27.600 | PI Sta 10+17.722 |
| Δ = 79° 42' 07.8" (LT) | Δ = 67° 38' 14.6" (RT) | Δ = 25° 23' 10.6" (LT) |
| L = 347.766 | L = 35.415 | L = 26.584 |
| T = 208.670 | T = 20.097 | T = 13.514 |
| R = 250.000 | R = 30.000 | R = 60.000 |

DENOTES PAVEMENT REMOVAL

NOTE: SEE SHEET 16 FOR -L- PROFILE
SEE SHEET 19 FOR -Y4- PROFILE

23-APR-2002 09:08
 C:\arc\veg\1\proj\2912\plan\2912_8.plt
 10:00:00 AM 11/18/05