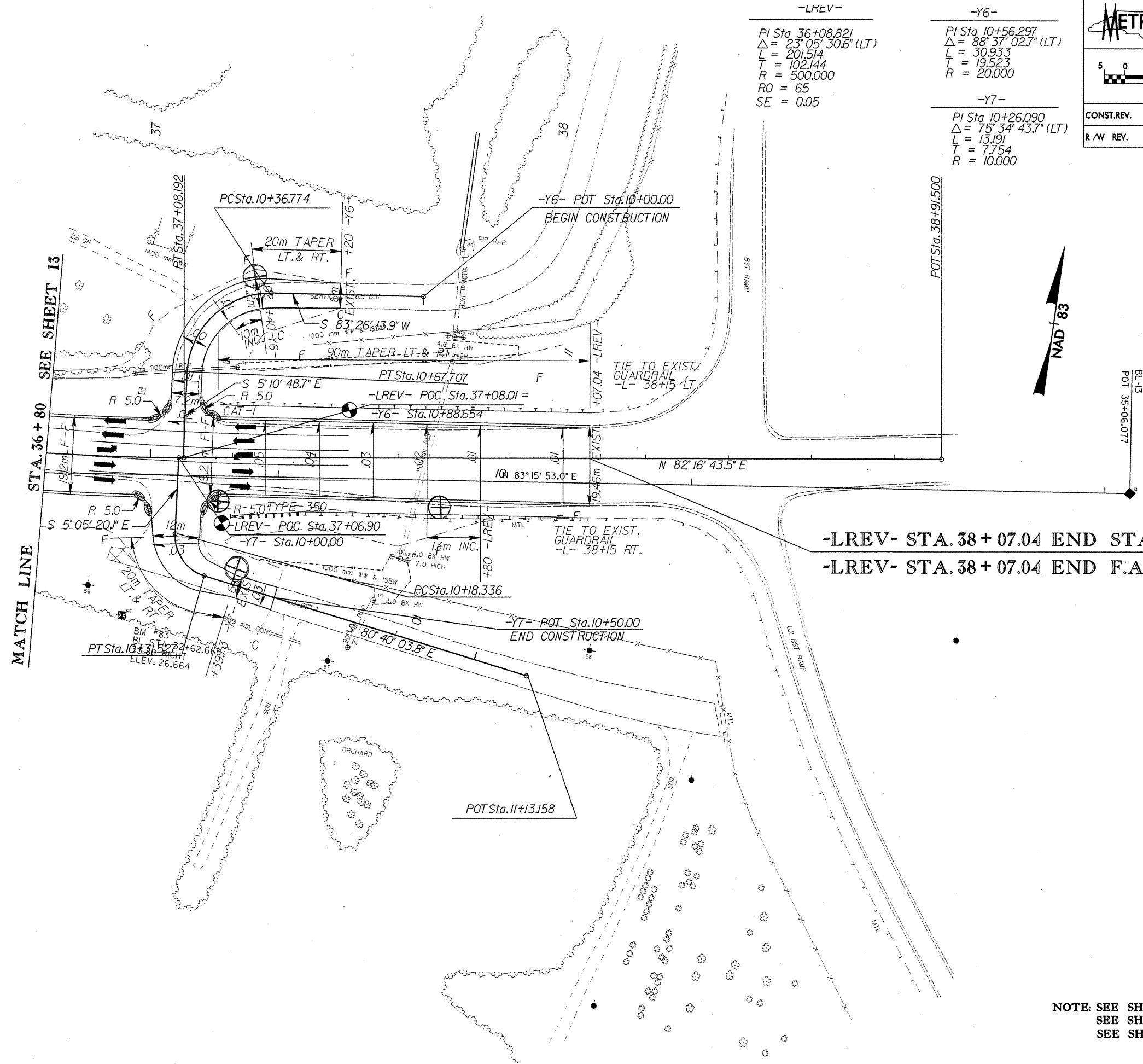


| | |
|--|---------------------|
| PROJECT REFERENCE NO. U-2912 | SHEET NO. 13 |
| R/W SHEET NO. | |
| ROADWAY DESIGN ENGINEER | HYDRAULICS ENGINEER |
| PRELIMINARY PLANS <small>DO NOT USE FOR CONSTRUCTION</small> INCOMPLETE PLANS <small>DO NOT USE FOR R/W ACQUISITION</small> | |
| CONST. REV. | |
| R/W REV. | |

-LREV-
 PI Sta 36+08.821
 $\Delta = 23^{\circ} 05' 30.6" (LT)$
 L = 201.514
 T = 102.144
 R = 500.000
 RO = 65
 SE = 0.05

-Y6-
 PI Sta 10+56.297
 $\Delta = 88^{\circ} 37' 02.7" (LT)$
 L = 30.933
 T = 19.523
 R = 20.000

-Y7-
 PI Sta 10+26.090
 $\Delta = 75^{\circ} 34' 43.7" (LT)$
 L = 13.191
 T = 7.754
 R = 10.000



-LREV- STA. 38 + 07.04 END STATE PROJECT 8.244
-LREV- STA. 38 + 07.04 END F.A. PROJECT STP-06200



REVISIONS

23-APR-2002 09:10
 C:\pco\work\10048835\10048835.dwg
 10048835

NOTE: SEE SHEET 18 FOR -L- PROFILE
 SEE SHEET 20 FOR -Y6- PROFILE
 SEE SHEET 20 FOR -Y7- PROFILE