

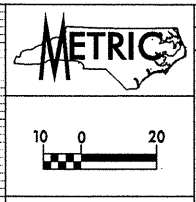
55
54
53
52
51
50
49
48
47
46
45
44
43
42
41
40
39
38
37
36
35
34
33
32
31
30

Soil Sample Test Results

SAMPLE NO.	STATION	OFFSET	DEPTH INTERVAL	AASHTO CLASS.	L.L.	P.I.	% BY WEIGHT				% PASSING (SIEVES)			MOISTURE %	ORGANIC %
							C.SAND	F.SAND	SILT	CLAY	2.0 mm	425 µm	75 µm		
S-6	26+72	7MLT	0.40-0.85	A-7-6(32)	62	35	8.7	7.5	19.2	64.6	99	94	84	31.8	
S-7	26+72	7MLT	0.85-1.20	A-2-7(4)	66	40	58.2	11.7	3.8	26.3	86	39	27		
S-8	26+72	7MLT	1.20-1.90	A-2-6(0)	40	20	67.1	11.3	5.5	16.2	86	39	19		
S-9	28+51	6.5MLT	0.30-1.80	A-2-4(0)	16	NP	28.5	57.2	3.2	11.1	100	88	16		

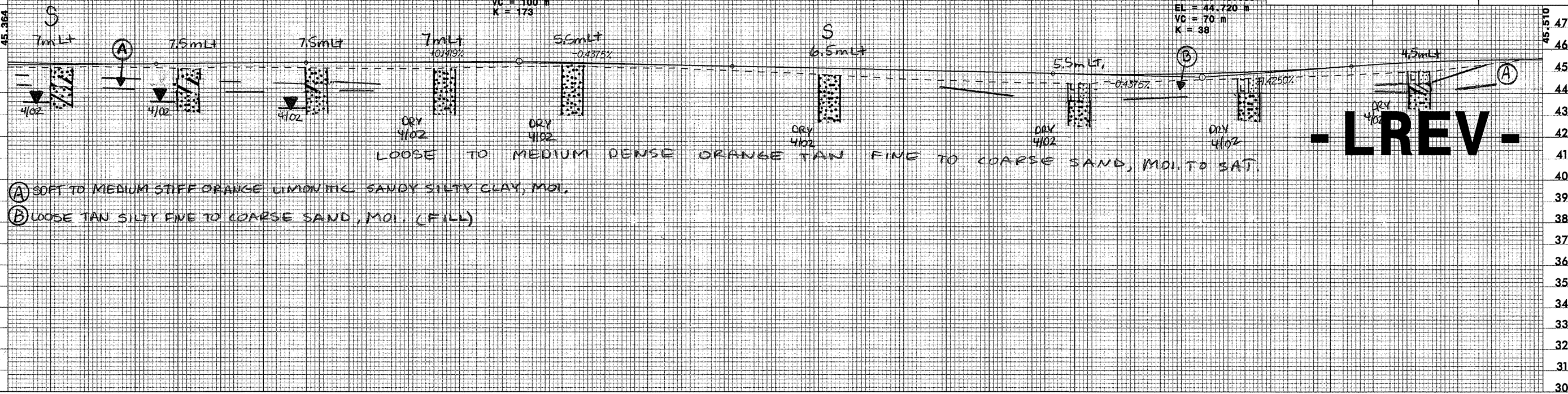
EL = 45.420 m
VC = 100 m
K = 173

PI = 29+40.000
EL = 44.720 m
VC = 70 m
K = 38



PROJECT REFERENCE NO. U-2912
ROADWAY DESIGN ENGINEER
SHEET NO. 17
HYDRAULICS ENGINEER

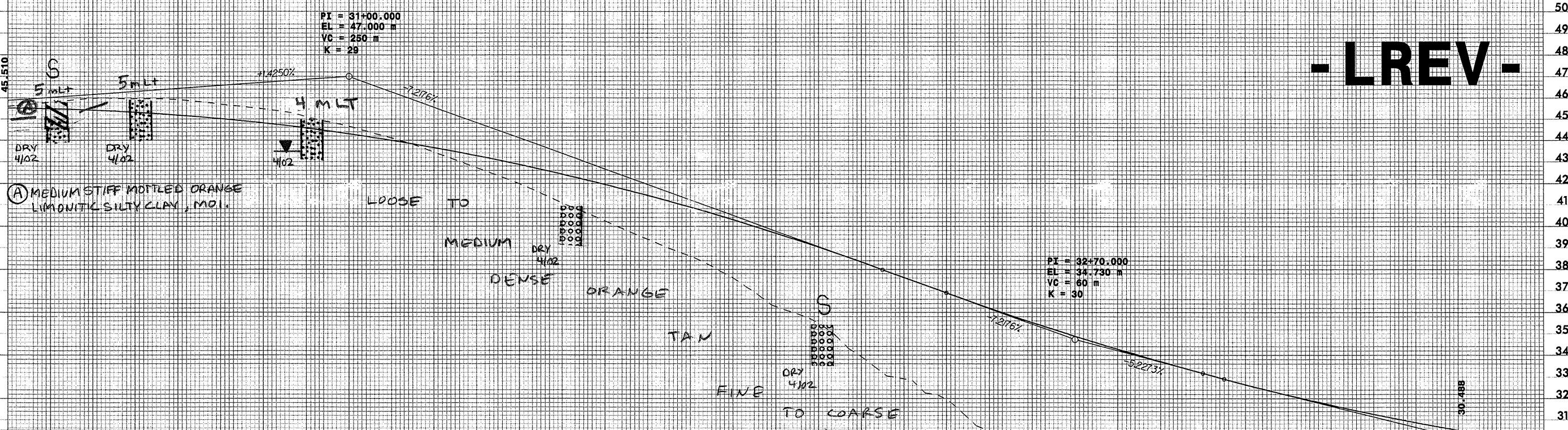
INCOMPLETE PLANS
DO NOT USE FOR R/W ACQUISITION
PRELIMINARY PLANS
DO NOT USE FOR CONSTRUCTION



-LREV-

51 +60 +80 27 +20 +40 +60 +80 28 +20 +40 +60 +80 29 +20 +40 +60 +80 30 +20

23-APR-2002 09:22
R:\proj\real\gpc\compstation\U2912.pfl
ID:joins AI:10045038



-LREV-

Soil Sample Test Results

SAMPLE NO.	STATION	OFFSET	DEPTH INTERVAL	AASHTO CLASS.	L.L.	P.I.	% BY WEIGHT				% PASSING (SIEVES)			MOISTURE %	ORGANIC %
							C.SAND	F.SAND	SILT	CLAY	2.0 mm	425 µm	75 µm		
S-11	30+31	5MLT	0.30-0.60	A-7-6(23)	52	27	14.5	6.3	22.6	56.6	100	94	80		
S-12	32+11	CL	0.30-1.90	A-1-b(0)	25	NP	86.0	7.7	2.2	4.0	90	19	6		

49 +20 +40 +60 +80 31 +20 +40 +60 +80 32 +20 +40 +60 +80 33 +20 +40 +60

48