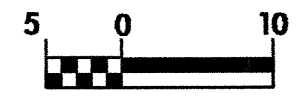
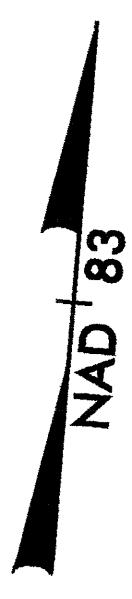
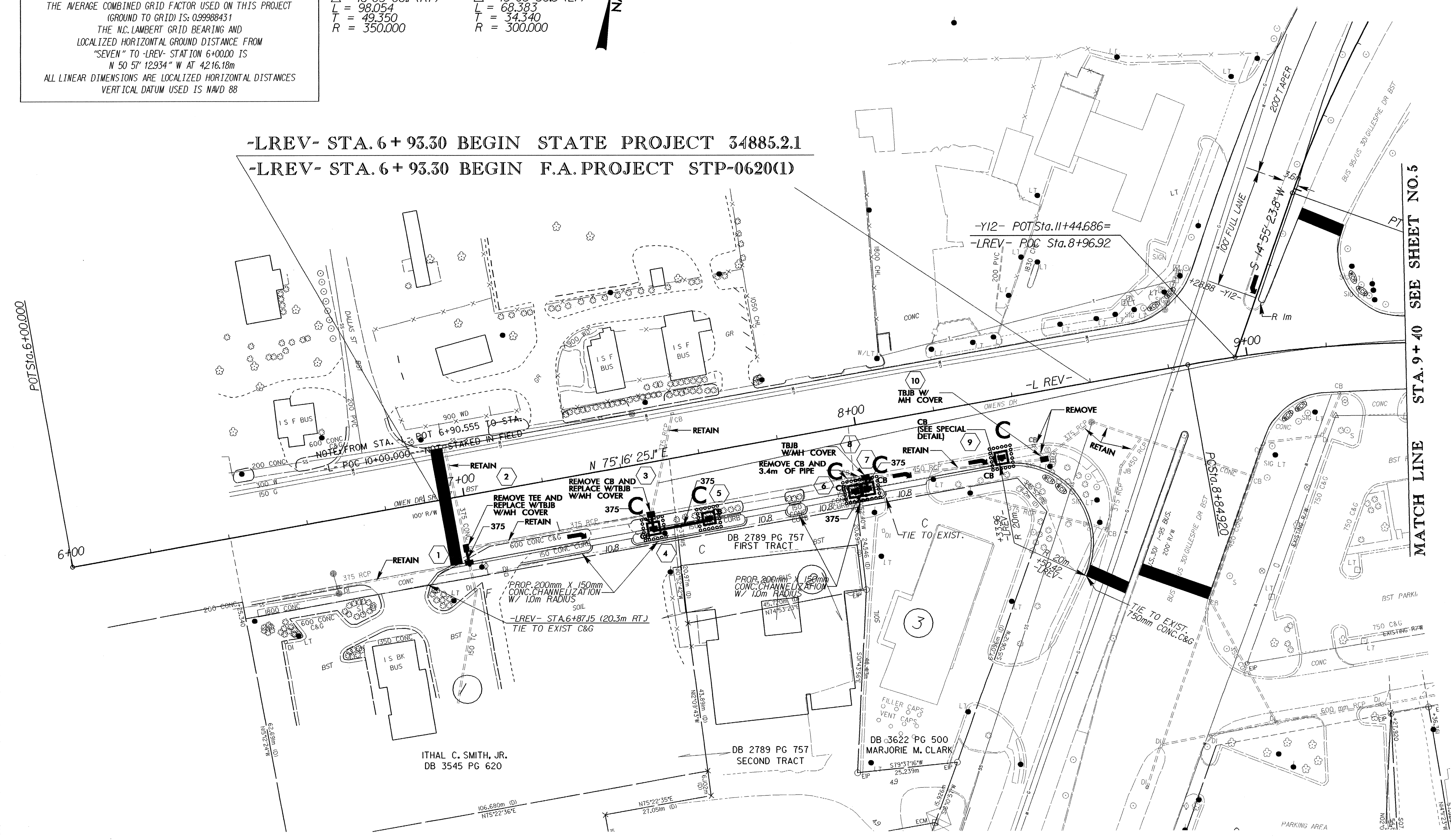
	PROJECT REFERENCE NO.	SHEET NO.
	U-2912	EC-13/CONST.4
	R/W SHEET NO.	
	ROADWAY DESIGN ENGINEER	HYDRAULICS ENGINEER
CONST. REV.		
R/W REV.		

DATUM DESCRIPTION
 THE LOCALIZED COORDINATE SYSTEM DEVELOPED FOR THIS PROJECT IS BASED ON THE STATE PLANE COORDINATES ESTABLISHED BY NCGS FOR MONUMENT "SEVEN"
 WITH NAD 83 STATE PLANE GRID COORDINATES OF
 NORTHING: 138173.482(m) EASTING: 622122.922(m)
 THE AVERAGE COMBINED GRID FACTOR USED ON THIS PROJECT (GROUND TO GRID) IS: 0.99988431
 THE N.C. LAMBERT GRID BEARING AND LOCALIZED HORIZONTAL GROUND DISTANCE FROM "SEVEN" TO -LREV- STATION 6+00.00 IS
 N 50 57' 12.934" W AT 4216.18m
 ALL LINEAR DIMENSIONS ARE LOCALIZED HORIZONTAL DISTANCES
 VERTICAL DATUM USED IS NAVD 88

-LREV-	-Y12-
PI Sta 9+34.270	PI Sta 10+67.154
$\Delta = 16' 03' 06.1" (RT)$	$\Delta = 13' 03' 36.5" (LT)$
L = 98.054	L = 68.383
T = 49.350	T = 34.340
R = 350.000	R = 300.000



-LREV- STA. 6+93.30 BEGIN STATE PROJECT 34885.2.1
 -LREV- STA. 6+93.30 BEGIN F.A. PROJECT STP-0620(1)



MATCH LINE STA. 9+40 SEE SHEET NO. 5