

METRIC

CONST. REV.
R/W REV.

PROJECT REFERENCE NO. U-2912	SHEET NO. EC-14/CONST.5
R/W SHEET NO.	HYDRAULICS ENGINEER
ROADWAY DESIGN ENGINEER	

-LREV-	-Y1-	-Y2-	-LREV-
PI Sta 9+34.270 Δ = 16° 03' 06.1" (RT) L = 98.054 T = 49.350 R = 350.000	PI Sta 10+45.695 Δ = 74° 07' 21.1" (LT) L = 12.937 T = 7.552 R = 10.000 SE = SEE PLANS	PI Sta 10+87.336 Δ = 53° 48' 36.5" (LT) L = 18.783 T = 10.149 R = 20.000 SE = SEE PLANS	PI Sta 12+02.990 Δ = 59° 30' 40.1" (RT) L = 259.666 T = 142.919 R = 250.000 RO = 78 SE = 0.06

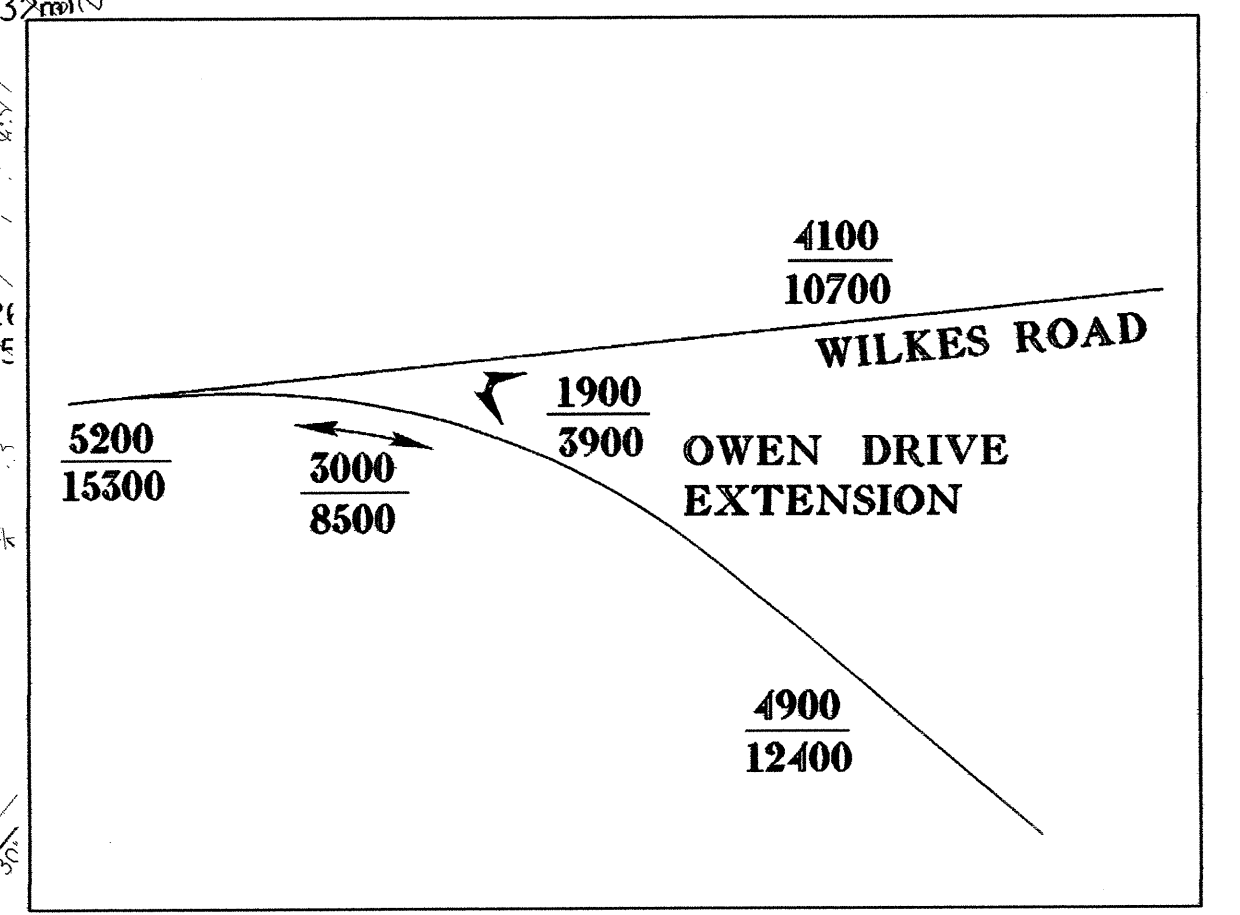
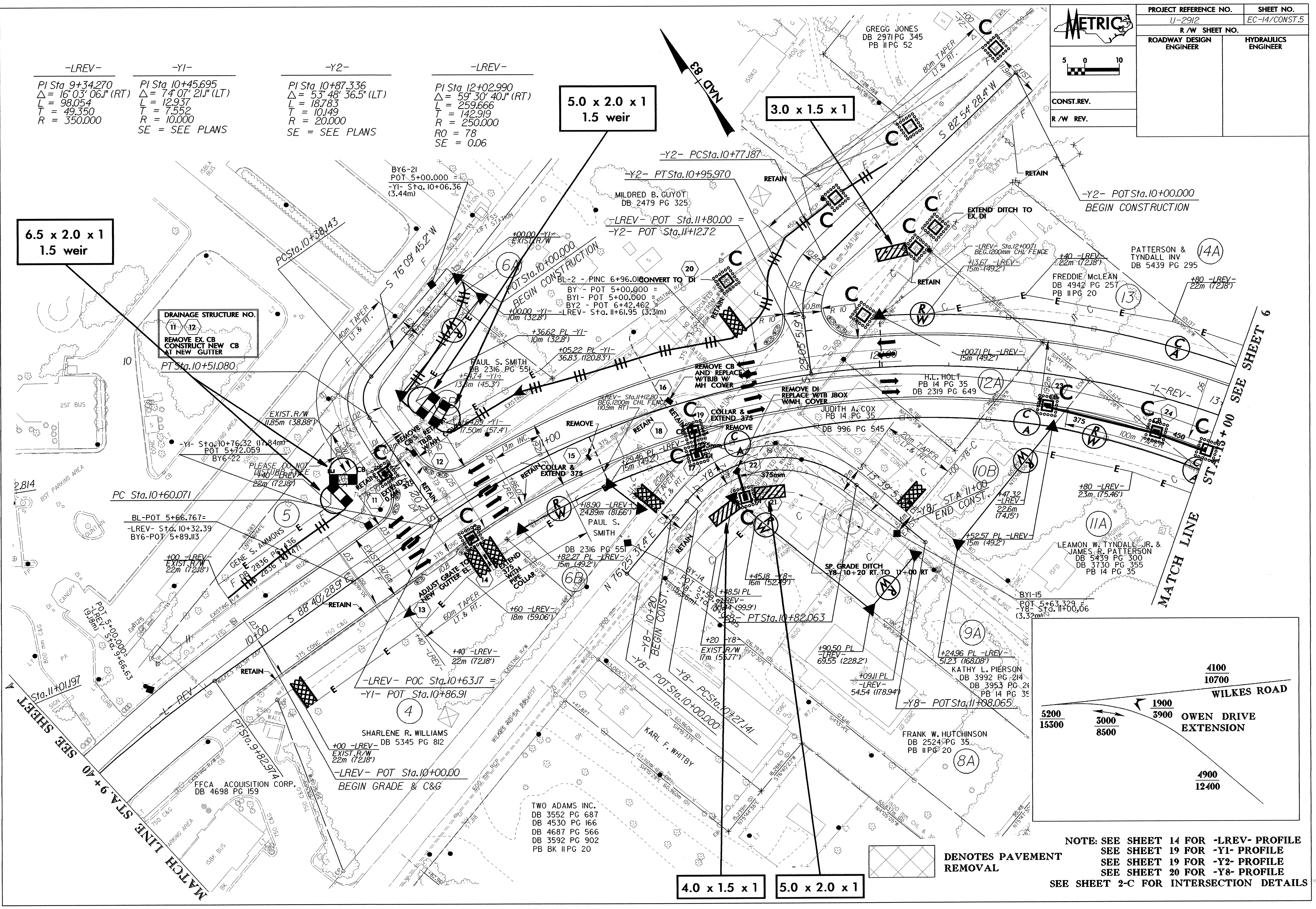
**6.5 x 2.0 x 1
1.5 weir**

**5.0 x 2.0 x 1
1.5 weir**

3.0 x 1.5 x 1

4.0 x 1.5 x 1

5.0 x 2.0 x 1



DENOTES PAVEMENT REMOVAL

NOTE: SEE SHEET 14 FOR -LREV- PROFILE
SEE SHEET 19 FOR -Y1- PROFILE
SEE SHEET 19 FOR -Y2- PROFILE
SEE SHEET 20 FOR -Y8- PROFILE
SEE SHEET 2-C FOR INTERSECTION DETAILS