

# TWO LANE, TWO WAY WORK ZONE (L-LINES)

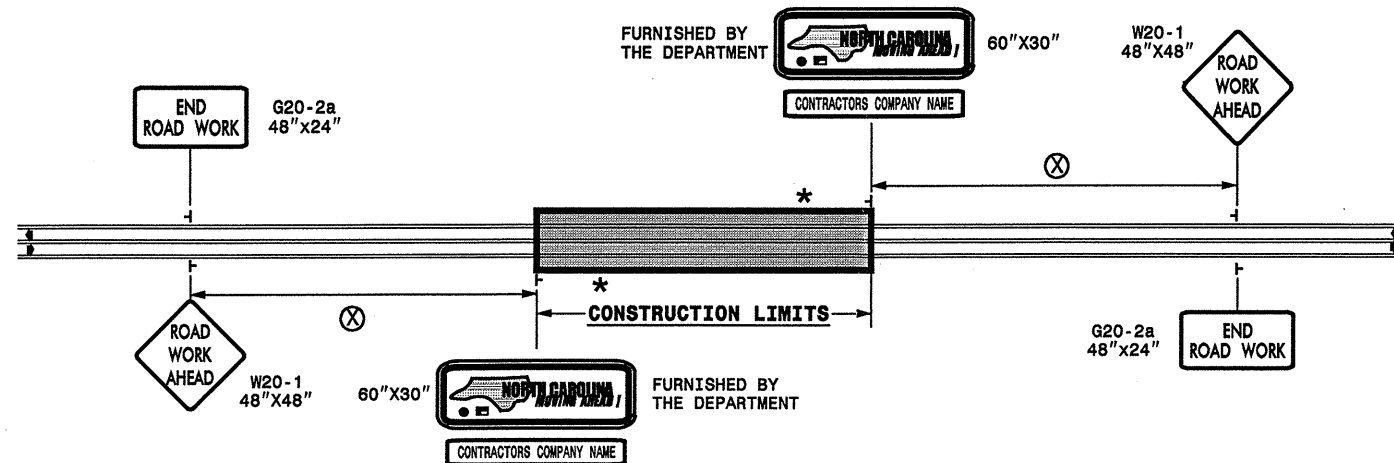
FURNISHED BY THE DEPARTMENT



60"X30"

CONTRACTORS COMPANY NAME

60" Max. X 12"



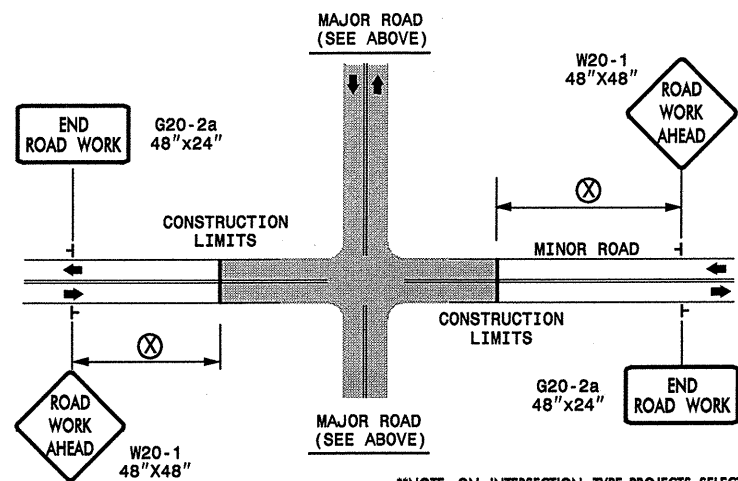
POSTED SPEED LIMIT (M.P.H.)	RECOMMENDED MINIMUM SIGN SPACING
P.S.L. ≤ 50	350'
P.S.L. ≥ 55	500'

\* ROAD WORK NEXT XX MILES G20-1A 60"X24"  
 THIS SIGN TO BE USED ON PROJECTS LONGER THAN 2 MILES  
 THE NUMBER DISPLAYED ON THE SIGN IS TO BE A WHOLE NUMBER ROUNDED UP TO THE NEXT MILE  
 IT'S TO BE LOCATED 1,500 FEET INSIDE OF THE CONSTRUCTION LIMITS

PROJ. REFERENCE NO. WBS 39281 6 of 10	SHEET NO. NCMA-1
---	---------------------

STATE OF NORTH CAROLINA  
 DEPT. OF TRANSPORTATION  
 DIVISION OF HIGHWAYS  
 RALEIGH, N.C.

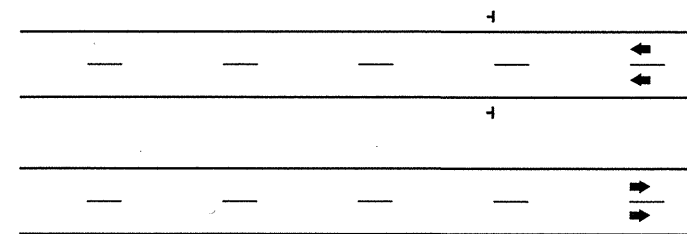
# INTERSECTIONS (-Y- LINES)



\*\*NOTE: ON INTERSECTION TYPE PROJECTS, SELECT THE MAJOR ROAD BASED ON THE HIGHER ADT.

# FREEWAYS/INTERSTATES

DUAL MOUNT "ROAD WORK AHEAD" SIGNS 1,000' IN ADVANCE OF PROJECT LIMITS  
 DUAL MOUNT "MOVING AHEAD" SIGNS 500' IN ADVANCE OF PROJECT LIMITS



DETAIL DRAWING FOR ADVANCE WARNING WORK ZONE SIGNS

# GENERAL NOTES

SEE SPECIAL PROVISIONS FOR "NORTH CAROLINA MOVING AHEAD" REQUIREMENTS.

**LEGEND**

┆ STATIONARY SIGN  
 ◄ DIRECTION OF TRAFFIC FLOW

SHEET 1 OF 1

APPROVED: _____ DATE: _____	<b>ADVANCE WARNING WORK ZONE SIGNS FOR "MOVING AHEAD"</b>	
SEAL	SCALE: NONE	REVISIONS
	DATE: 07/03	11/04
	DWG. BY: JSK	
	DESIGN BY: JSK	
	REVIEWED BY: SK	