

CREEK CENTERLINE DESCRIPTION

LINE NO.	BEARING	DISTANCE
1	S32°07'58"W	17.58'
2	S23°31'47"W	46.20'
3	S72°16'07"W	20.58'
4	S45°43'45"W	33.89'
5	S69°22'59"W	29.68'
6	S34°16'53"W	38.95'
7	S59°12'00"W	42.34'
8	S30°02'31"W	33.92'
9	S71°03'25"W	8.13'
10		

POINT NO.	ELEVATION	COURSE	BEARING	DISTANCE	-L- STATION	OFFSET TO -L-
BL-3	637.59'	BL-PINC 16+60.73			13+44.04	18.67 LT
BL-4	634.67'	BL-3 TO BL-4	N 1° 49' 38.5" W	408.49'	17+52.53	19.87 LT
T-640	634.67'	BL-3 TO T-640	N 58° 48' 16.5" E	113.86'		
T-1647	638.73'	BL-3 TO T-1647	S35° 32' 45.1"E	83.31'		
T-1648	635.77'	T-1647 TO T-1648	N 25° 53' 26.5" E	166.38'		

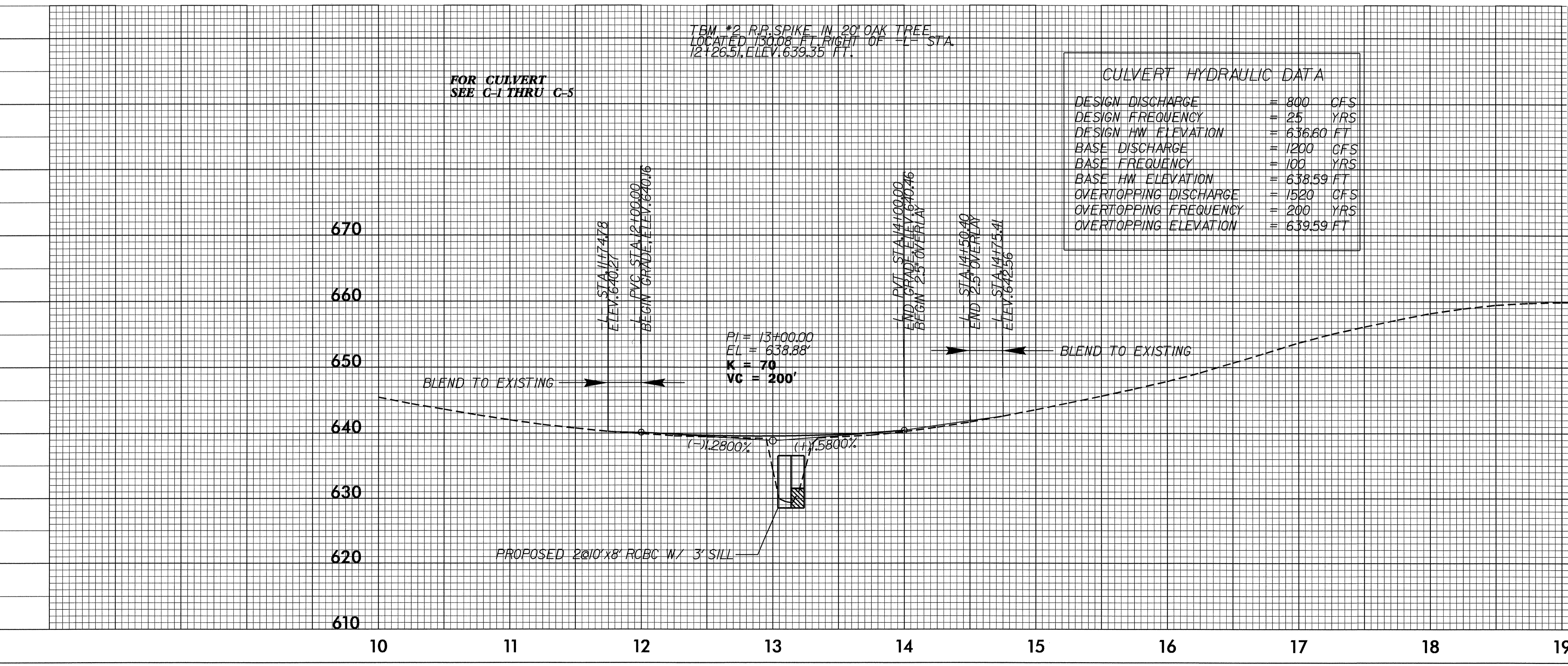
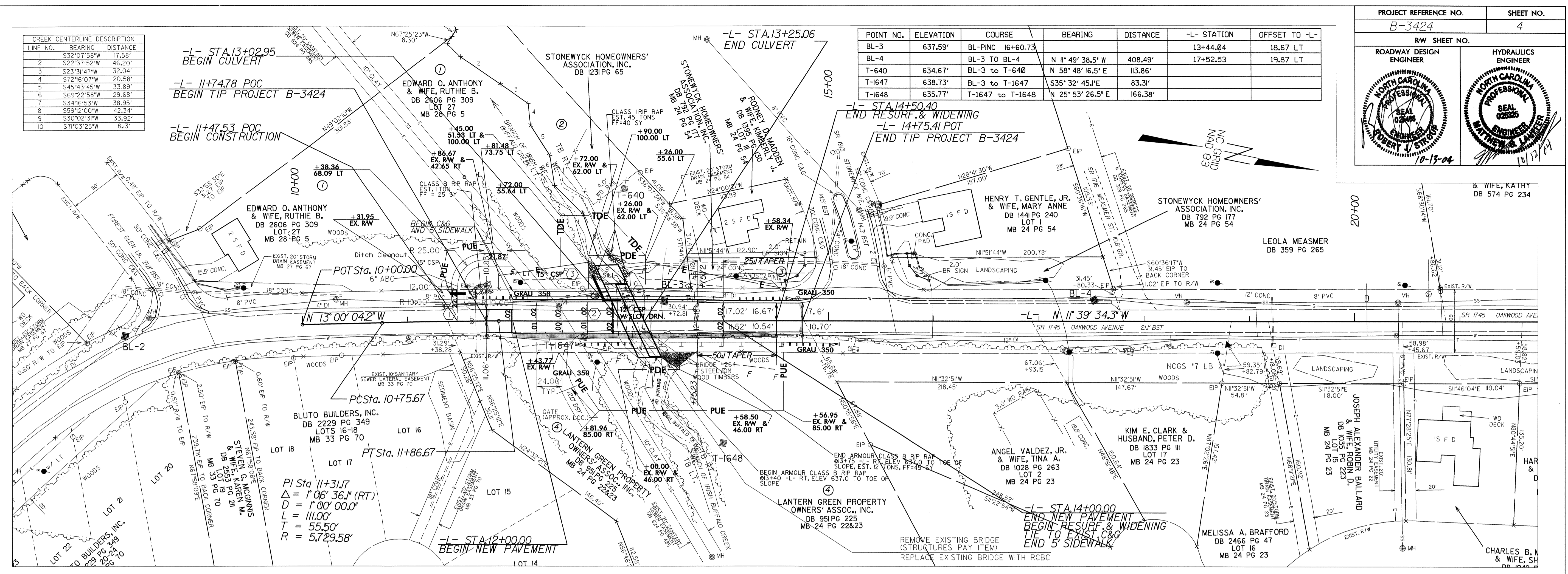
PROJECT REFERENCE NO. B-3424 SHEET NO. 4

RW SHEET NO.

ROADWAY DESIGN ENGINEER: NORTH CAROLINA PROFESSIONAL SEAL 02825 ROBERT J. STROUP

HYDRAULICS ENGINEER: NORTH CAROLINA PROFESSIONAL SEAL 02825 B. T. WATNEY

10-13-04



CULVERT HYDRAULIC DATA

DESIGN DISCHARGE	= 800 CFS
DESIGN FREQUENCY	= 25 YRS
DESIGN HW ELEVATION	= 636.60 FT
BASE DISCHARGE	= 1200 CFS
BASE FREQUENCY	= 100 YRS
BASE HW ELEVATION	= 638.59 FT
OVERTOPPING DISCHARGE	= 1520 CFS
OVERTOPPING FREQUENCY	= 200 YRS
OVERTOPPING ELEVATION	= 639.59 FT

DATUM DESCRIPTION

THE LOCALIZED COORDINATE SYSTEM DEVELOPED FOR THIS PROJECT IS BASED ON THE STATE PLANE COORDINATES ESTABLISHED BY NCGS FOR MONUMENT "7 LB 2" WITH NAD 83 STATE PLANE GRID COORDINATES OF NORTHING: 6246247416811 EASTING: 15112296678111 THE AVERAGE COMBINED GRID FACTOR USED ON THIS PROJECT (GROUND TO GRID) IS: 0.99985186 THE NC LAMBERT GRID BEARING AND LOCALIZED HORIZONTAL GROUND DISTANCE FROM "7 LB 2" TO -L- STATION 11+74.78 IS S 9° 51' 48" E . 704951373 Feet ALL LINEAR DIMENSIONS ARE LOCALIZED HORIZONTAL DISTANCES VERTICAL DATUM USED IS NAVD 88