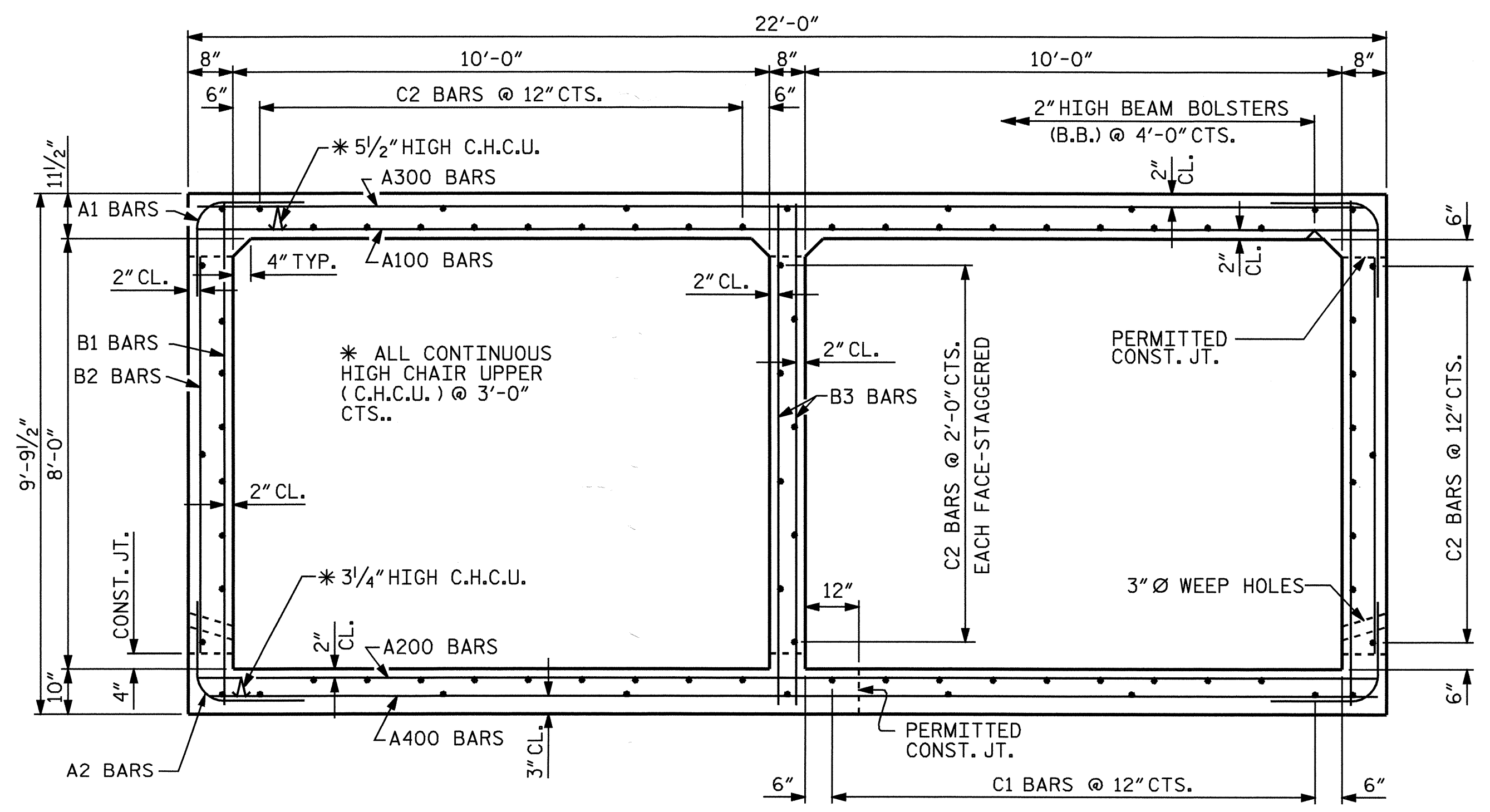


ELEVATION SECTION THROUGH SILL

CULVERT SILL DETAILS

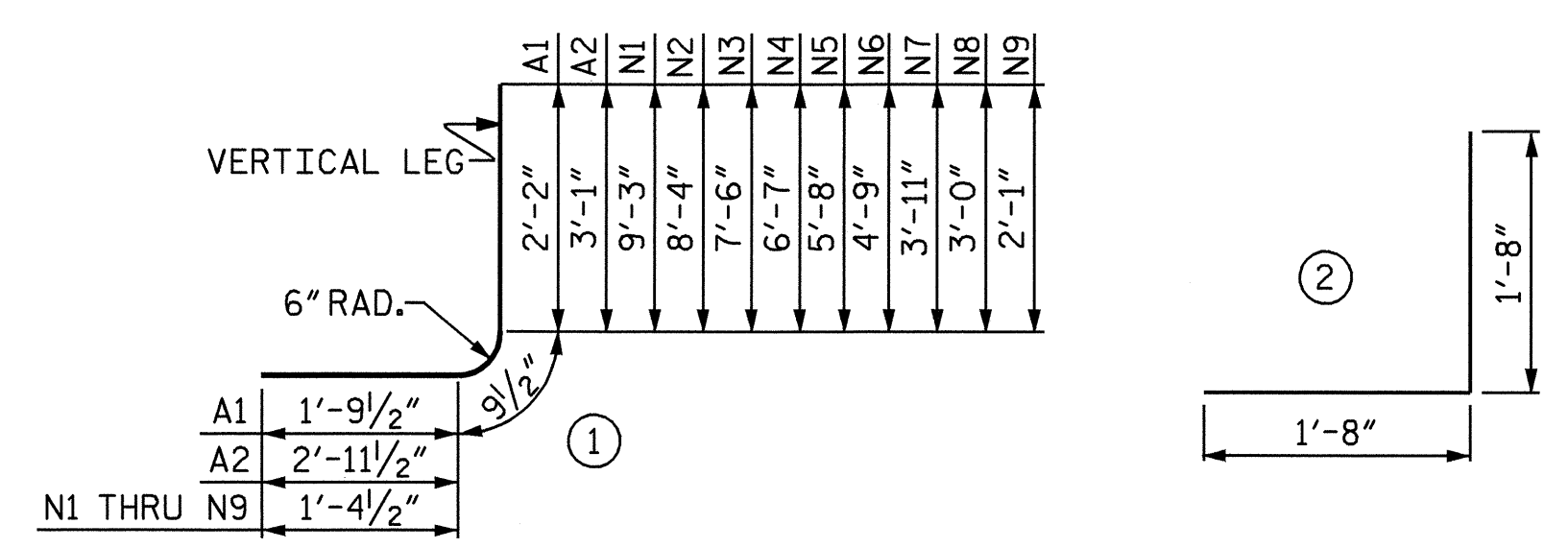


RIGHT ANGLE SECTION OF BARREL

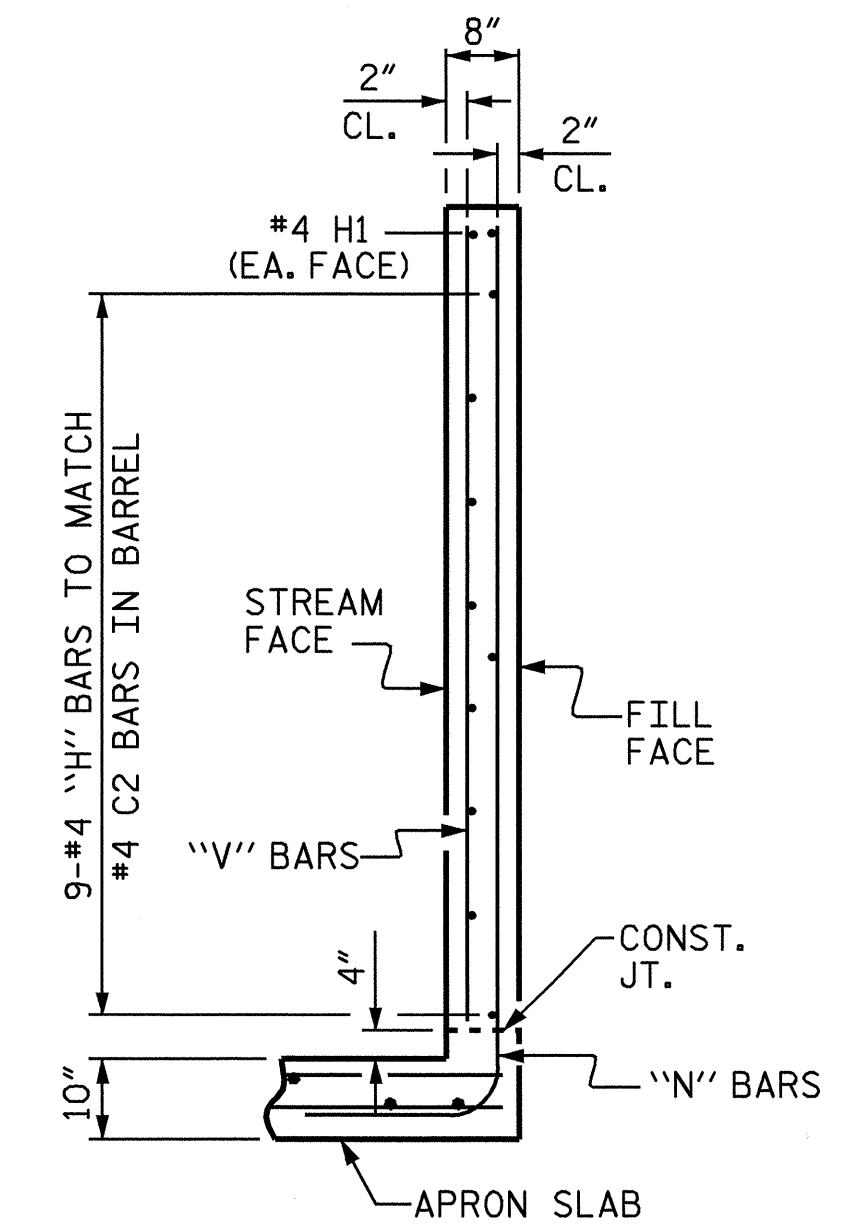
THERE ARE 80 "C" BARS IN SECTION OF BARREL.

BILL OF MATERIAL																	
BAR NO	SIZE	TYPE	LENGTH	WEIGHT	BAR NO	SIZE	TYPE	LENGTH	WEIGHT	BAR NO	SIZE	TYPE	LENGTH	WEIGHT			
A1	272	5	1	4'-9"	1348	A300	114	7	STR	21'-7"	5029	C1	108	4	STR	26'-0"	1876
A2	272	7	1	6'-10"	3799	A301	4	7	STR	19'-5"	159	C2	159	4	STR	27'-8"	2939
A100	76	7	STR	21'-7"	3353	A302	4	7	STR	17'-5"	142	D1	18	6	STR	3'-0"	81
A101	2	7	STR	19'-11"	81	A303	4	7	STR	15'-4"	125	D2	2	6	STR	3'-5"	10
A102	2	7	STR	18'-5"	75	A304	4	7	STR	13'-4"	109	G1	8	5	STR	25'-0"	209
A103	2	7	STR	16'-10"	69	A305	4	7	STR	11'-4"	93	H1	4	4	STR	20'-4"	54
A104	2	7	STR	15'-4"	63	A306	4	7	STR	9'-4"	76	H2	4	4	STR	18'-7"	50
A105	2	7	STR	13'-10"	57	A307	4	7	STR	7'-3"	59	H3	2	4	STR	16'-1"	21
A106	2	7	STR	12'-4"	50	A308	4	7	STR	5'-3"	43	H4	2	4	STR	13'-10"	18
A107	2	7	STR	10'-10"	44	A309	4	7	STR	3'-3"	27	H5	2	4	STR	12'-8"	17
A108	2	7	STR	9'-4"	38	A400	147	7	STR	21'-7"	6485	H6	2	4	STR	11'-7"	15
A109	2	7	STR	7'-9"	32	A401	4	7	STR	19'-5"	159	H7	2	4	STR	9'-4"	12
A110	2	7	STR	6'-3"	26	A402	4	7	STR	17'-5"	142	H8	2	4	STR	7'-2"	10
A111	2	7	STR	4'-9"	19	A403	4	7	STR	15'-4"	125	H9	2	4	STR	4'-11"	7
A112	2	7	STR	3'-3"	13	A404	4	7	STR	13'-4"	109	K1	12	4	2	3'-4"	27
A200	130	5	STR	21'-7"	2926	A405	4	7	STR	11'-4"	93	N1	4	5	1	11'-5"	48
A201	4	5	STR	19'-1"	80	A406	4	7	STR	9'-4"	76	N2	4	5	1	10'-6"	44
A202	4	5	STR	16'-10"	70	A407	4	7	STR	7'-3"	59	N3	4	5	1	9'-8"	40
A203	4	5	STR	14'-6"	60	A408	4	7	STR	5'-3"	43	N4	4	5	1	8'-9"	37
A204	4	5	STR	12'-2"	51	A409	4	7	STR	3'-3"	27	N5	4	5	1	7'-10"	33
A205	4	5	STR	9'-10"	41	B1	158	4	STR	9'-3"	976	N6	4	5	1	6'-11"	29
A206	4	5	STR	7'-7"	32	B2	272	4	STR	7'-4"	1332	N7	4	5	1	6'-1"	25
A207	4	5	STR	5'-3"	22	B3	190	4	STR	9'-3"	1174	N8	4	5	1	5'-2"	22
A208	4	5	STR	2'-11"	12							N9	4	5	1	4'-3"	18

BAR TYPES



REINFORCING STEEL	LBS.	35722
CLASS A CONCRETE		
2 OUTLET WINGS W/FLOOR SLAB, 1 CURTAIN WALL	19.2	CY
1 SILL	1.1	CY
1 HEADWALL	1.2	CY
TOTAL	21.5	CY



SECTION THRU OUTLET WING

PROJECT NO. B-3424
CABARRUS COUNTY
 STATION: 13+14.00 -L-
 SHEET 9 OF 11

STATE OF NORTH CAROLINA
 PROFESSIONAL ENGINEER
 SEVEN L. WALKER
 SEAL 21545
 Steven L. Walker
 09/27/04

DEPARTMENT OF TRANSPORTATION
 RALEIGH
 DOUBLE 10 FT. X 8 FT.
 CONCRETE BOX CULVERT