

8/17/99

LINE NO.	BEARING	DISTANCE
1	S32°07'58"W	17.58'
2	S22°37'52"W	46.20'
3	S23°31'47"W	32.04'
4	S72°16'07"W	20.58'
5	S45°43'45"W	33.89'
6	S69°22'58"W	29.68'
7	S34°16'53"W	38.95'
8	S59°12'00"W	42.34'
9	S30°02'31"W	33.92'
10	S71°03'25"W	8.13'

PROJECT REFERENCE NO. <i>B-3424</i>	SHEET NO. <i>EC-3/CONST.4</i>
RW SHEET NO.	
ROADWAY DESIGN ENGINEER	HYDRAULICS ENGINEER

POINT NO.	ELEVATION	COURSE	BEARING	DISTANCE
BL-3	637.59'	BL-PINC 16+60.73		
T-640	634.67'	BL-3 to T-640	N 58° 48' 16.5" E	113.86'
T-1647	638.73'	BL-3 to T-1647	S35° 32' 45.1"E	83.3'
T-1648	635.77'	T-1647 to T-1648	N 25° 53' 26.5" E	166.38'

NOTE: PLACE TEMPORARY ROCK SEDIMENT DAMS TYPE-B AND TEMPORARY ROCK SILT CHECKS TYPE-A AT DRAINAGE OUTLETS.

CLEARING AND GRUBBING EROSION CONTROL FOR CONSTRUCTION SHEET 4

& WIFE, KATHY DB 574 PG 234

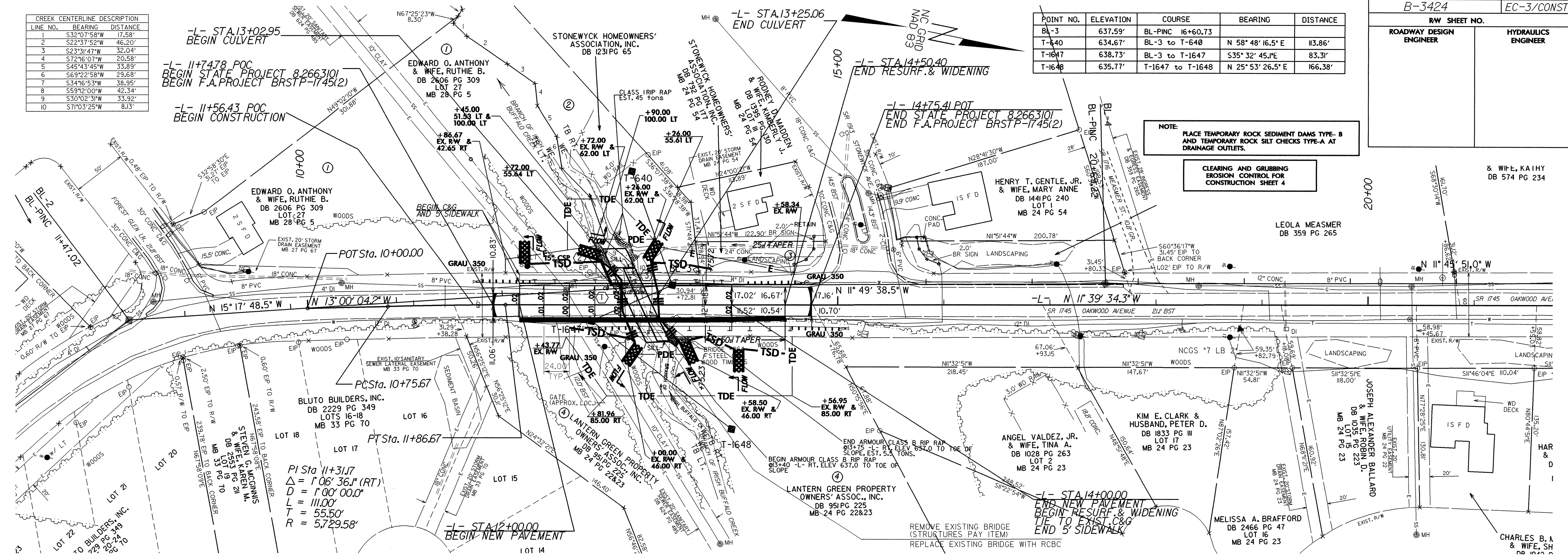
LEOLA MEASMER DB 359 PG 265

KIM E. CLARK & HUSBAND, PETER D. DB 1833 PG III LOT 17 MB 24 PG 23

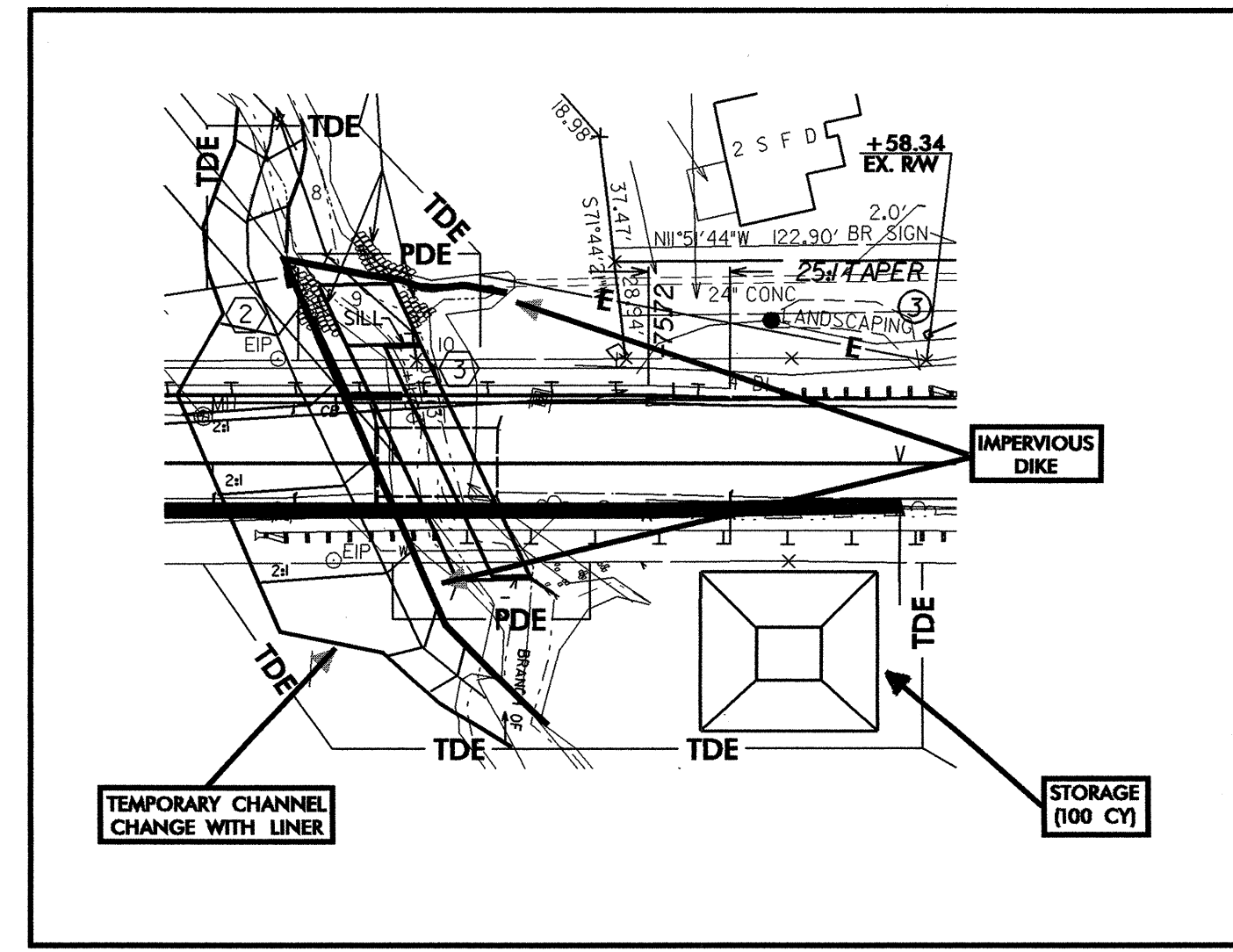
JOSEPH ALEXANDER BALLARD & WIFE, ROBIN D. DB 1035 PG 223 LOT 15 MB 24 PG 23

MELISSA A. BRAFFORD DB 2466 PG 47 LOT 16 MB 24 PG 23

CHARLES B. A & WIFE, SH DB 1020 PG 223



- CONSTRUCTION SEQUENCE (STA. 13+14 -L-)**
1. CONSTRUCT STILLING BASIN (100 CY)
 2. CONSTRUCT TEMPORARY CHANNEL CHANGES WITH LINER
 3. CONSTRUCT CULVERT
 4. DIVERT WATER THROUGH CULVERT
 5. COMPLETE ROADWAY



REVISIONS