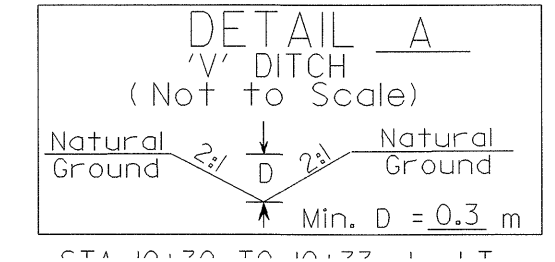


**DATUM DESCRIPTION**  
 THE LOCALIZED COORDINATE SYSTEM DEVELOPED FOR THIS PROJECT IS BASED ON THE STATE PLANE COORDINATES ESTABLISHED BY NCOS FOR MONUMENT "GROWERS" WITH NAD 83 STATE PLANE GRID COORDINATES OF NORTHING: 2041029269(m) EASTING: 627793989(m) THE AVERAGE COMBINED GRID FACTOR USED ON THIS PROJECT (GROUND TO GRID) IS: 0.999874900 THE N.C. LAMBERT GRID BEARING LOCALIZED HORIZONTAL GROUND DISTANCE FROM "GROWERS" TO -L- STA 10+20.000 IS S 29° 05' 09.33" W 40.3537 m ALL LINEAR DIMENSIONS ARE LOCALIZED HORIZONTAL DISTANCES VERTICAL DATUM USED IS NGVD 29

**THE EXISTING WATER LINES ARE OWNED BY THE TOWN OF FUQUAY-VARINA**



**PROP. 1 - 200mm 22 1/2° DI BEND**

L POT 12+06.979 = BL-3 PINC 7+69.838 3.879 LT

**NOTE: CONTRACTOR SHALL MAKE ALL CONNECTIONS USING NECESSARY FITTINGS.**

L POT 12+21.776 = /BY2-8 POT 5+00.000

**PROP. 252.2m of 200mm DI WATER PIPE, CLASS 51, PC 2.41 MPa**

BY2-9 PINC 6+08.692 8.961LT

**PROP. 1 - 200mm x 50mm TAPPING SADDLE, 1 - 50mm CORPORATION STOP AND 20.4m OF 50mm COPPER WATER PIPE, TYPE K, 1 - 50mm GATE VALVE & VALVE BOX, 1.38 MPa WP, AND PLUG**

**PROP. 1 - 200mm GATE VALVE & VALVE BOX, 1.38 MPa WP**

**PROP. 43.0m of 450mm STEEL ENCASEMENT PIPE, 7.92mm THICK, BY BORE AND JACKING**

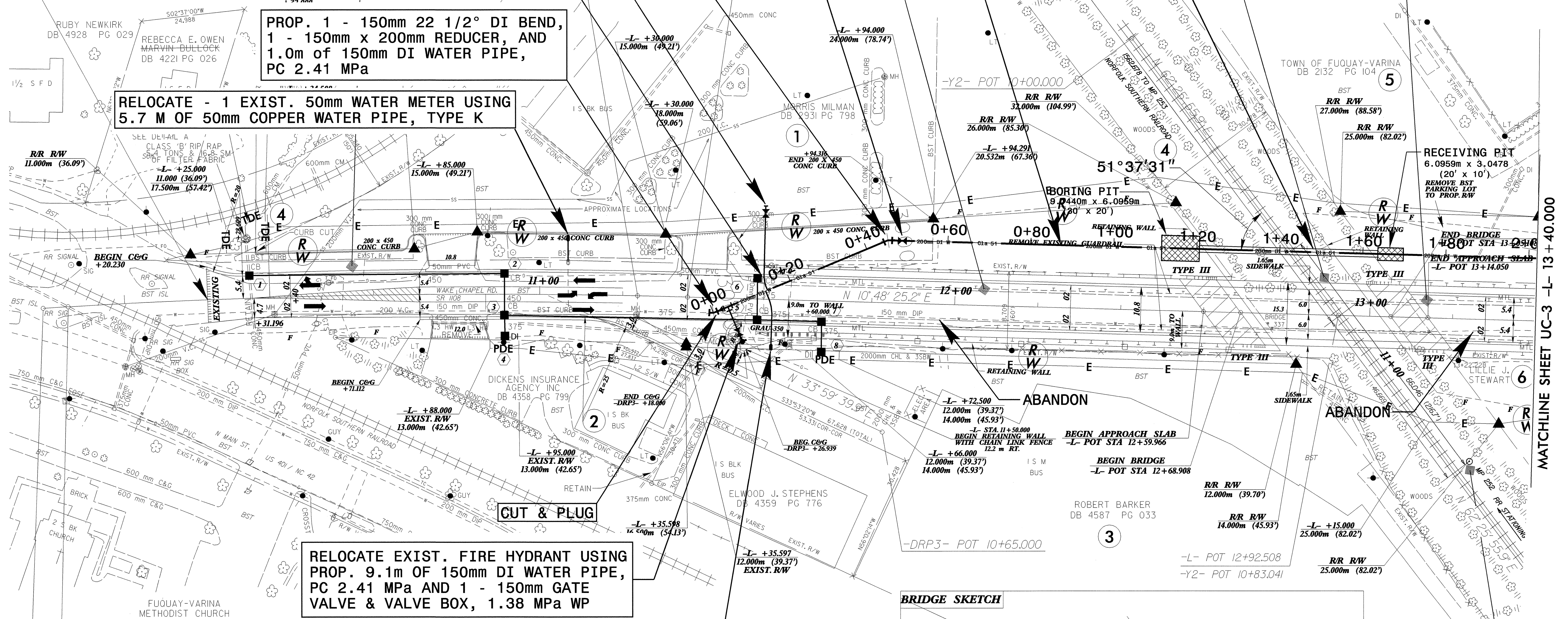
**UTILITY CONSTRUCTION**

**BEGIN STATE PROJECT B-3256 -L- POC STA. 10+20.000**

**REMOVE EXIST. WATER METER - SEE SPEC. FOR ROAD AND STRUCTURES 215.3**

**PROP. 1 - 150mm 22 1/2° DI BEND, 1 - 150mm x 200mm REDUCER, AND 1.0m of 150mm DI WATER PIPE, PC 2.41 MPa**

**RELOCATE - 1 EXIST. 50mm WATER METER USING 5.7 M OF 50mm COPPER WATER PIPE, TYPE K**



IC-MAR-2004 0951  
 R:\Utilities\Projects\B3256\04\_UC2\_ut\_psh.dgn  
 03/10/04

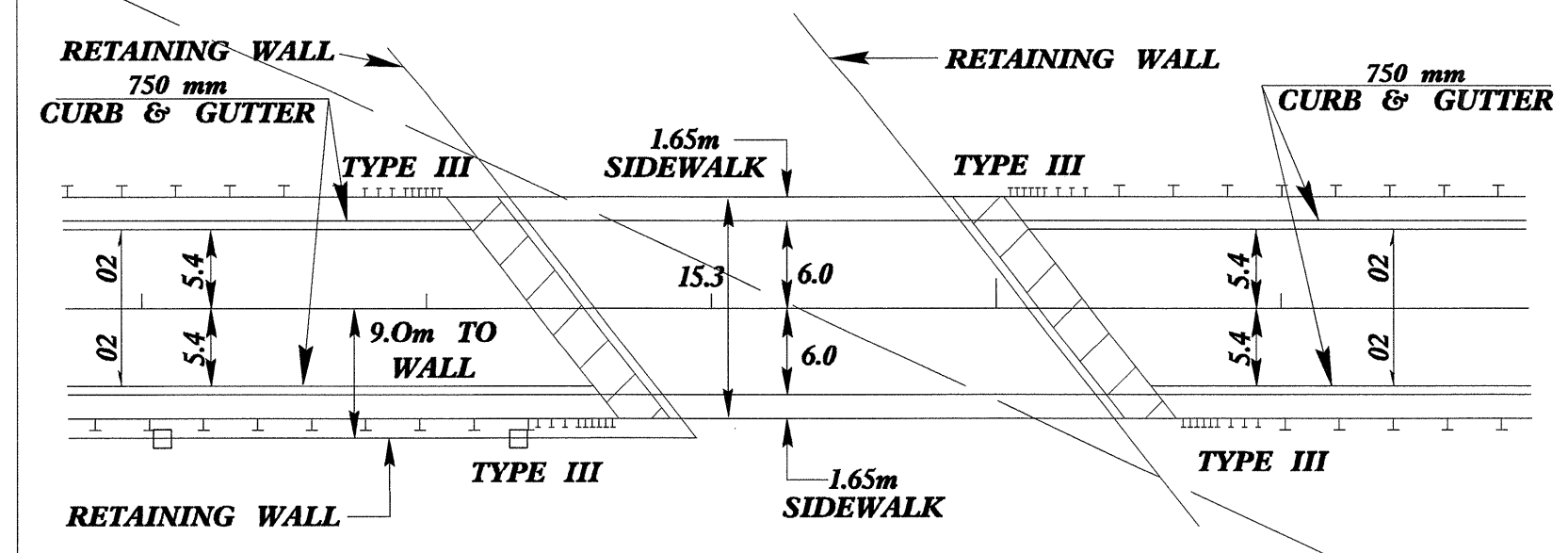
**RELOCATE EXIST. FIRE HYDRANT USING PROP. 9.1m OF 150mm DI WATER PIPE, PC 2.41 MPa AND 1 - 150mm GATE VALVE & VALVE BOX, 1.38 MPa WP**

**RELOCATE 1 - EXIST. 50mm WATER METER USING PROP. 1 - 200mm x 50mm TAPPING SADDLE, 1 - 50mm CORPORATION STOP AND 14.0m OF 50mm COPPER WATER PIPE, TYPE K**

$P = 10 + 61.014$   
 $\Delta = 4' 53'' 12.2'' (RT)$   
 $L = 149.257$   
 $T = 74.674$   
 $R = 1,750.000$   
 $SE = NC$

- NOTES:**
- FOR -L- PROFILE SEE SHEET NO. 6
  - ALL RADII = 2 METERS ON 200 X 450 CHANNELIZATION CURB UNLESS NOTED OTHERWISE.

**BRIDGE SKETCH**



L POT 13+25.152 = BY2-10 POT 6+66.662 36.200 RT

MATCHLINE SHEET UC-3 -L- 13 + 40.000