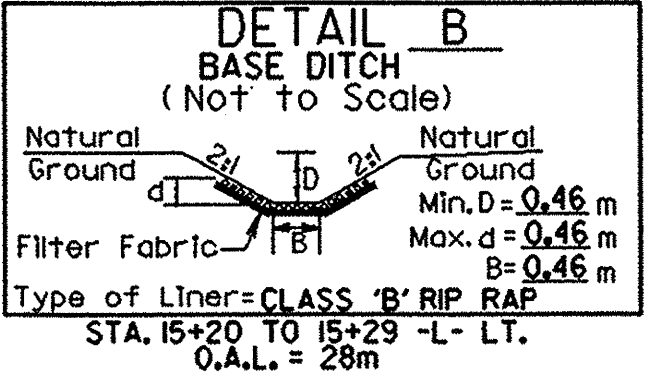
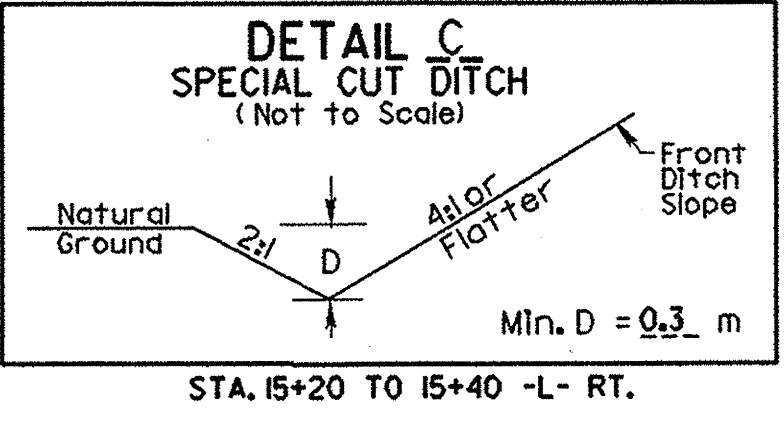
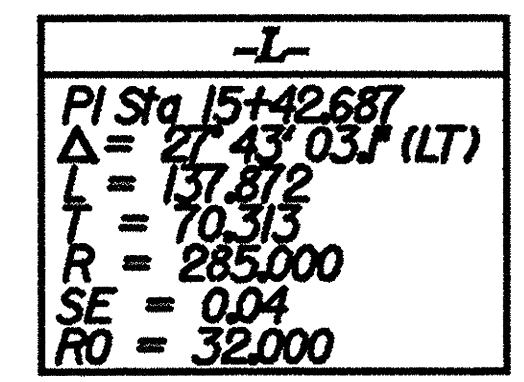
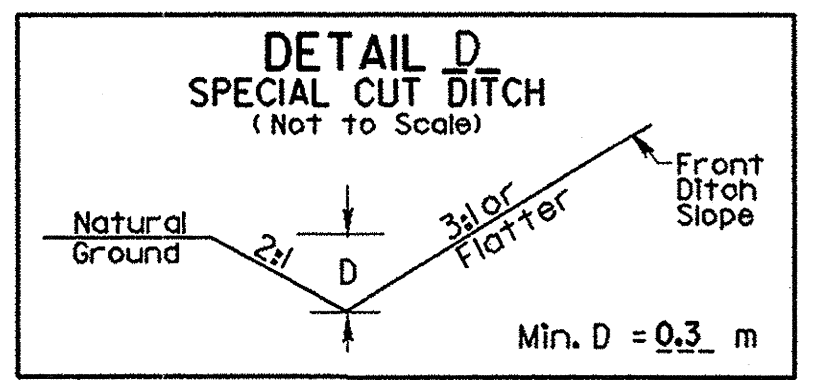
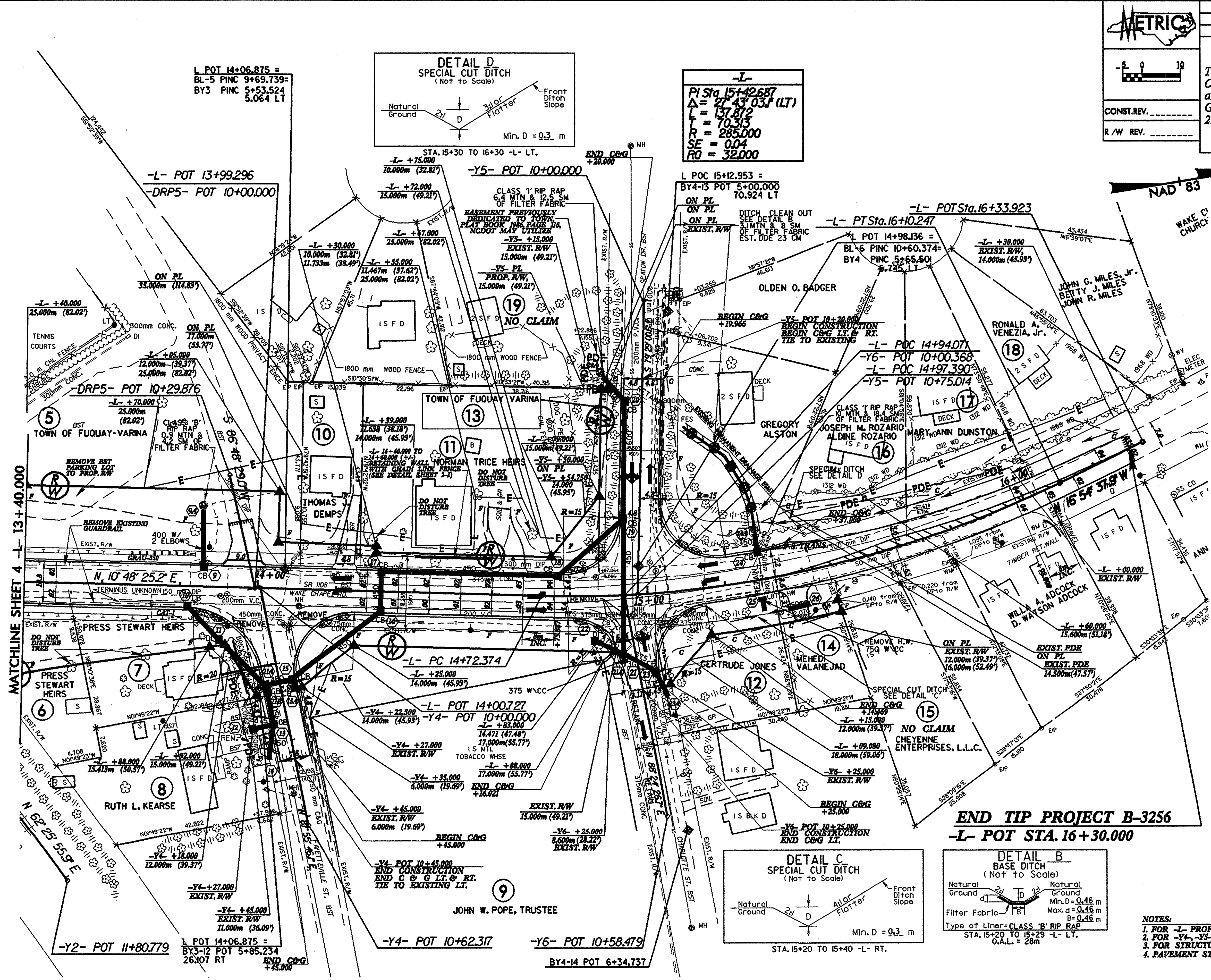


6-27-06 RIGHT OF WAY REVISION: A RIGHT OF WAY MARKER HAS BEEN ADDED ON PARCEL 7 15+13M RIGHT OF -L- STA. 13+88.000. RCB



END TIP PROJECT B-3256
-L- POT STA. 16+30.000

- NOTES:**
- FOR -L- PROFILE SEE SHEET NO. 6
 - FOR -Y4-, -Y5- AND -Y6- PROFILES SEE SHEET NO. 7
 - FOR STRUCTURE PLANS SEE SHEETS S-1 THRU S-31
 - PAVEMENT STRIPING