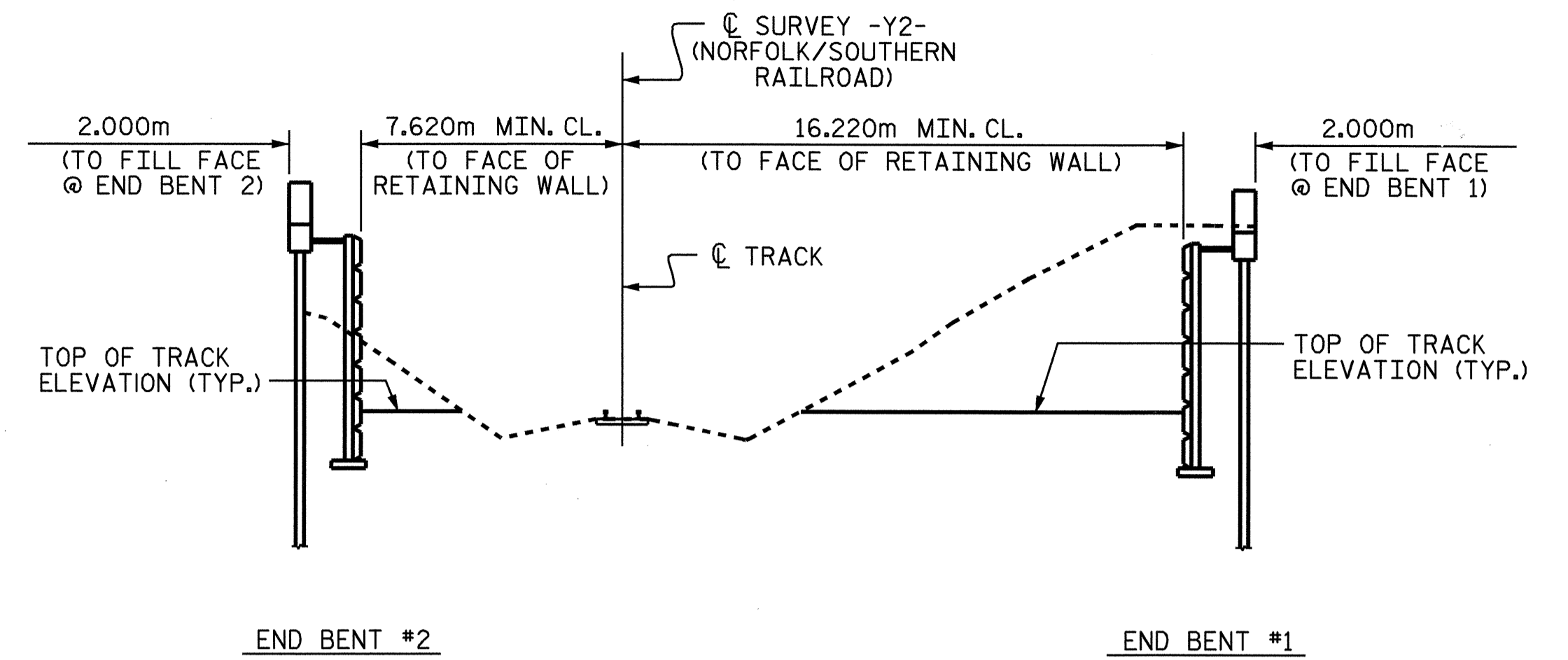
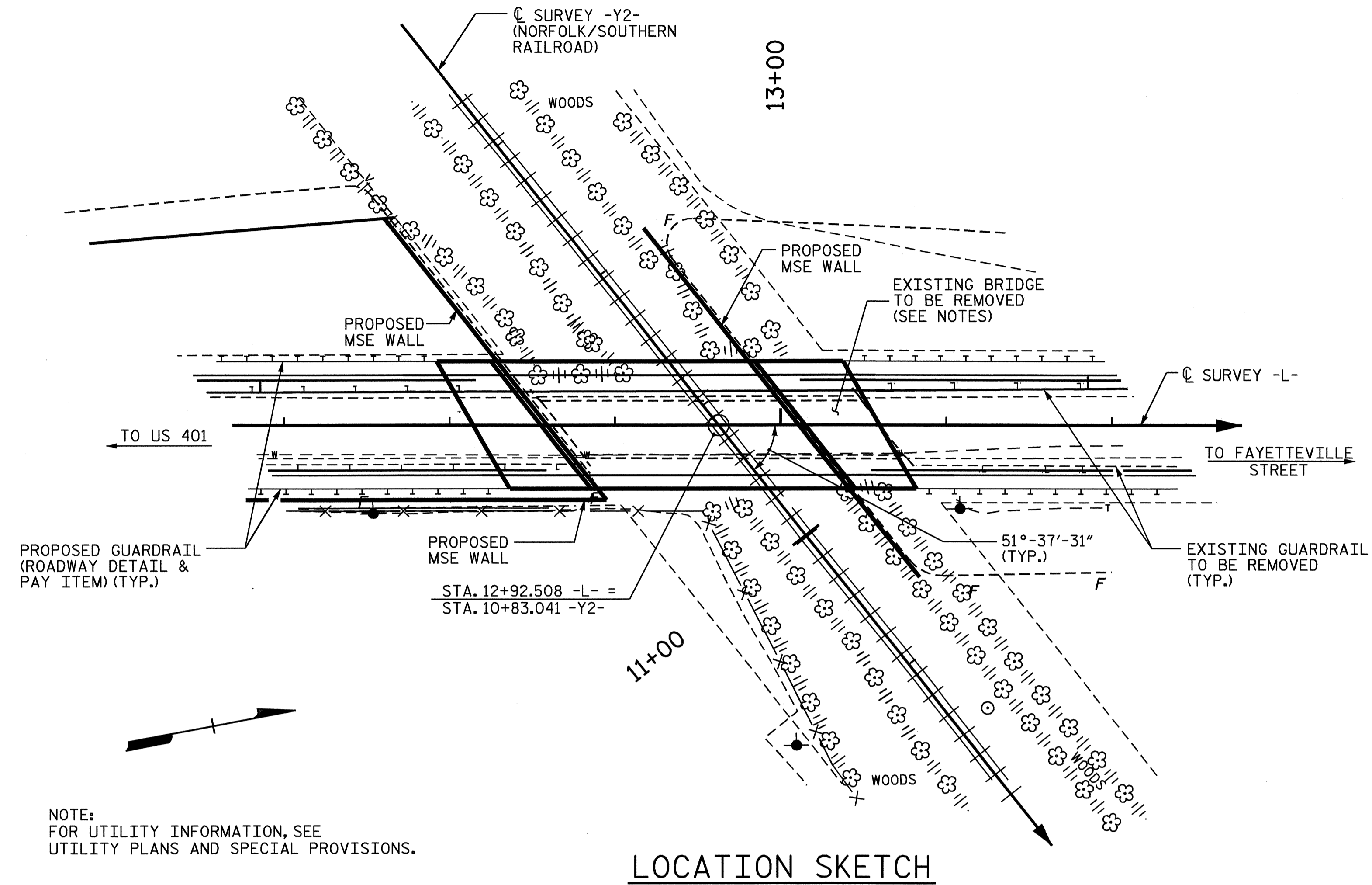


BM#2 : RAILROAD SPIKE IN PP #H137 4.139m LT. OF -L- STA. 13+01.925, ELEV. 132.316.



TOP OF RAIL ELEVATIONS			
STATION -Y2-	LEFT	STATION -Y2-	RIGHT
10+40.030	127.373	10+40.310	127.379
10+60.490	127.521	10+60.430	127.513
10+80.530	127.652	10+80.430	127.657
11+00.560	127.807	11+00.550	127.808
11+20.590	127.987	11+20.560	127.984

TOTAL BILL OF MATERIAL											
	REMOVAL OF EXISTING STRUCTURE	UNCLASSIFIED STRUCTURE EXCAVATION	REINFORCED CONCRETE DECK SLAB	GROOVING BRIDGE FLOORS	CLASS A CONCRETE	BRIDGE APPROACH SLABS	REINFORCING STEEL	STRUCTURAL STEEL	HP 310 x 79 STEEL PILES	THREE BAR METAL RAIL	
	LUMP SUM	CU. M.	SQ. M.	SQ. M.	CU. M.	LUMP SUM	KGS.	APPROX. KGS.	NO.	METERS	METERS
SUPERSTRUCTURE			582.8	597.8		LUMP SUM		81,900			66.020
END BENT 1		1180			31.0		2995		14	343.0	
END BENT 2		220			30.5		3249		14	224.0	
TOTAL	LUMP SUM	1400	582.8	597.8	61.5	LUMP SUM	6244	81,900	28	567.0	66.020

PROJECT NO. B-3256
WAKE COUNTY
 STATION: 12+92.508 -L-

SHEET 3 OF 3

STATE OF NORTH CAROLINA
 DEPARTMENT OF TRANSPORTATION
 RALEIGH

GENERAL DRAWING
 BRIDGE ON SR 1108 OVER
 NORFOLK SOUTHERN RAILROAD
 BETWEEN N. MAIN STREET &
 FAYETTEVILLE STREET
 (FUQUAY-VARINA)



DRAWN BY : G.M.P./K.M.M. DATE : 10/16/03
 CHECKED BY : F.B.POOLE DATE : 11/07/03

REVISIONS						SHEET NO.
NO.	BY:	DATE:	NO.	BY:	DATE:	S-3
1			3			TOTAL SHEETS 26
2			4			