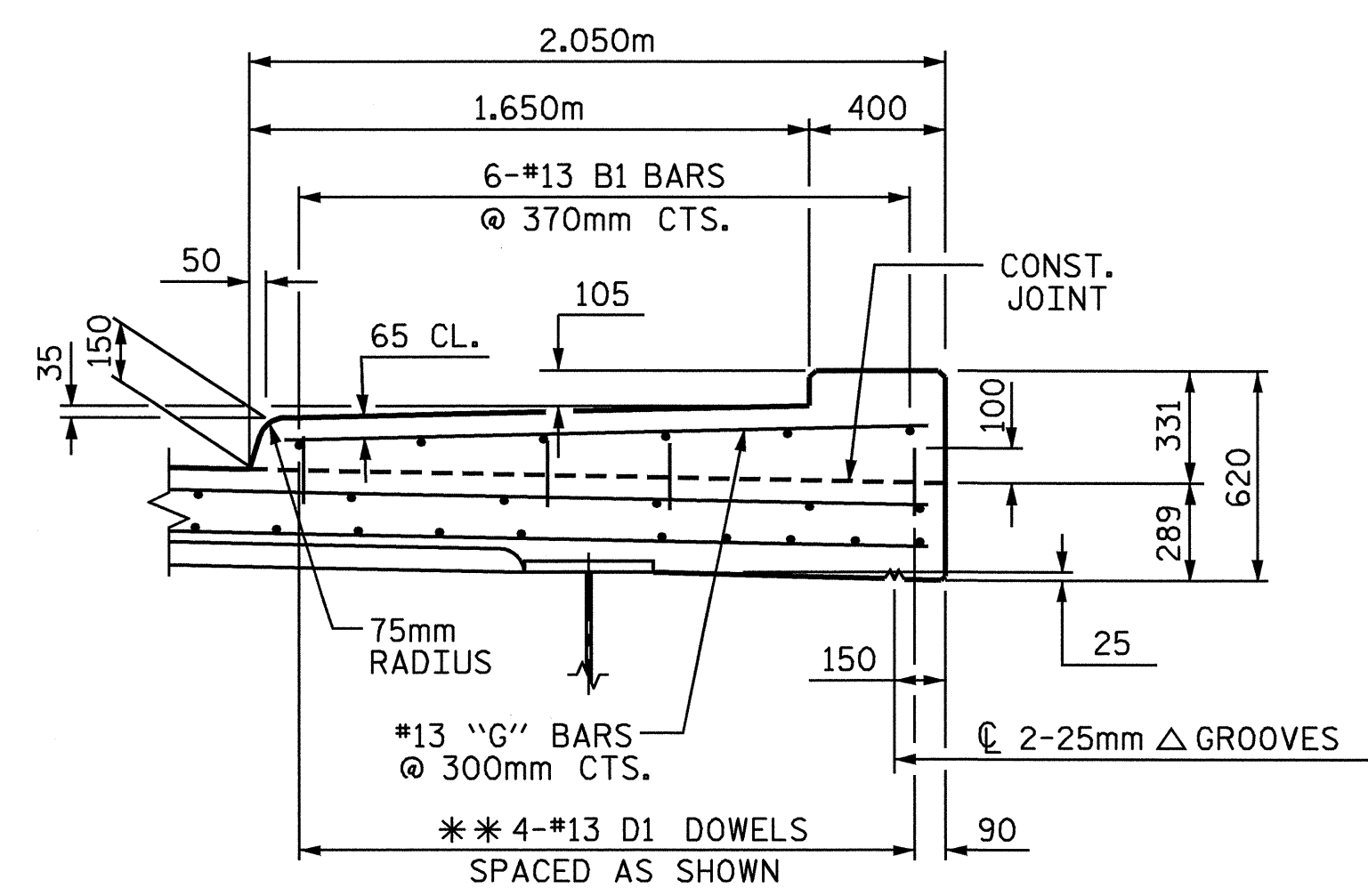


**PLAN OF SIDEWALKS**



**SECTION THRU SIDEWALK**

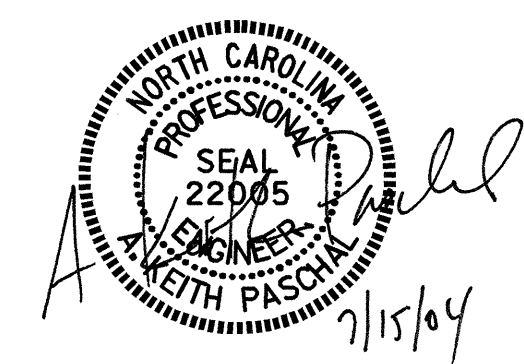
\*\* DOWELS MAY BE PUSHED INTO GREEN CONCRETE AFTER SPAN HAS BEEN SCREEDED OFF.

**NOTES**

- FOR END POST DETAILS AND REINFORCING STEEL, SEE "RAIL POST SPACINGS AND END OF RAIL DETAILS" SHEETS.
- THE SIDEWALK IN EACH SPAN SHALL NOT BE CAST UNTIL ALL SLAB CONCRETE IN THAT SPAN HAS BEEN CAST AND HAS REACHED A MINIMUM COMPRESSIVE STRENGTH OF 20.7 MPa.
- ALL REINFORCING STEEL IN SIDEWALKS SHALL BE EPOXY COATED.
- SIDEWALK REINFORCING STEEL AND CONCRETE ON BRIDGE SHALL BE INCLUDED IN THE PAY ITEM FOR "REINFORCED CONCRETE DECK SLAB".

PROJECT NO. B-3256  
WAKE COUNTY  
 STATION: 12+92.508 -L-

STATE OF NORTH CAROLINA  
 DEPARTMENT OF TRANSPORTATION  
 RALEIGH  
 SUPERSTRUCTURE  
 SIDEWALK DETAILS



REVISIONS						SHEET NO.
NO.	BY:	DATE:	NO.	BY:	DATE:	S-17
1			3			TOTAL SHEETS
2			4			26

DRAWN BY : G.M.P. / K.M.M. DATE : 6/12/03  
 CHECKED BY : F.B. POOLE DATE : 10/21/03

15-JUL-2004 09:27  
 W:\squaddp\3256\kmccauley\B3256\_sd\_SW\_01.dgn  
 kmccauley