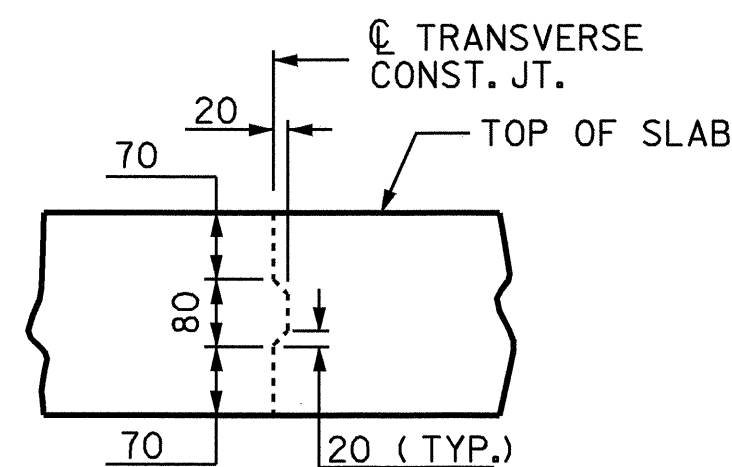


SUPERSTRUCTURE REINFORCING STEEL LENGTHS ARE BASED ON THE FOLLOWING MINIMUM SPLICE LENGTHS

BAR SIZE	SUPERSTRUCTURE EXCEPT APPROACH SLABS, PARAPET, AND BARRIER RAIL		APPROACH SLABS		PARAPET AND BARRIER RAIL
	EPOXY COATED	UNCOATED	EPOXY COATED	UNCOATED	
#13	610	540	610	540	840
#16	770	660	770	660	1050
#19	920	790	1190	790	1330
#22	1580	1060			
#25	2080	1390			



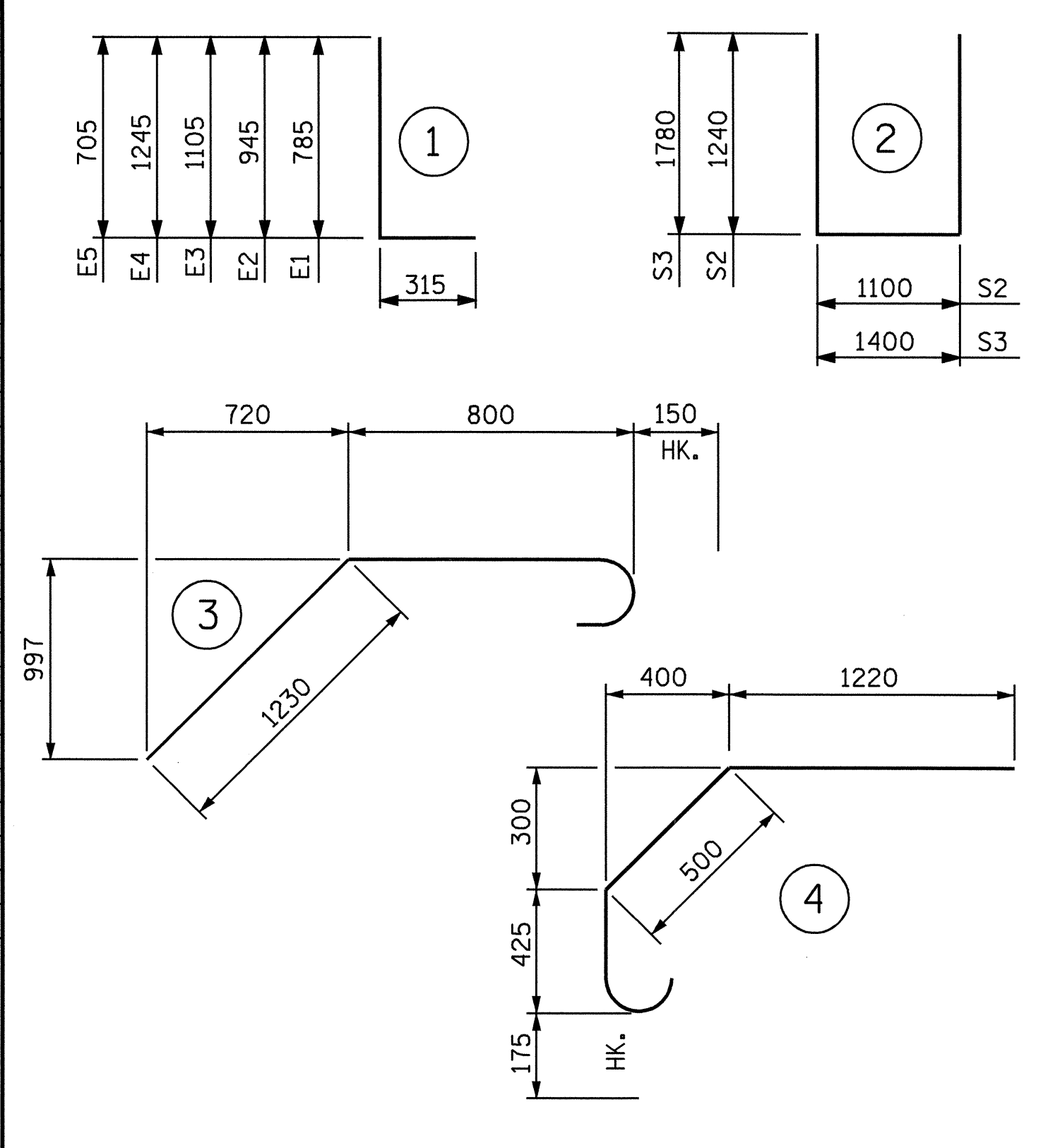
TRANSVERSE CONST. JOINT DETAIL

NOTE: REINFORCING STEEL IN SLAB NOT SHOWN. LONGITUDINAL REINFORCING STEEL SHALL BE CONTINUOUS THRU JOINT.

BILL OF MATERIAL

BAR	NO.	SIZE	TYPE	LENGTH	WEIGHT	BAR	NO.	SIZE	TYPE	LENGTH	WEIGHT	BAR	NO.	SIZE	TYPE	LENGTH	WEIGHT
*A1	143	#16	STR	16000	3551	A205	6	#16	STR	12980	121						
A2	143	#16	STR	16000	3551	A206	6	#16	STR	12380	115	*F1	4	#19	STR	1080	10
						A207	6	#16	STR	11780	110	*F2	8	#19	STR	1260	23
*A101	6	#16	STR	15400	143	A208	6	#16	STR	11160	104	*F3	4	#19	STR	1420	13
*A102	6	#16	STR	14800	138	A209	6	#16	STR	10560	98	*F4	4	#19	STR	1060	9
*A103	6	#16	STR	14200	132	A210	6	#16	STR	9960	93	*F5	8	#19	STR	1060	19
*A104	6	#16	STR	13580	126	A211	6	#16	STR	9340	87	*F6	4	#19	STR	1120	10
*A105	6	#16	STR	12980	121	A212	6	#16	STR	8740	81						
*A106	6	#16	STR	12380	115	A213	6	#16	STR	8140	76						
*A107	6	#16	STR	11780	110	A214	6	#16	STR	7520	70	*G2	228	#13	STR	1900	431
*A108	6	#16	STR	11160	104	A215	6	#16	STR	6920	64	*G11	4	#13	STR	1620	6
*A109	6	#16	STR	10560	98	A216	6	#16	STR	6320	59	*G12	4	#13	STR	1240	5
*A110	6	#16	STR	9960	93	A217	6	#16	STR	5700	53	*G13	4	#13	STR	860	3
*A111	6	#16	STR	9340	87	A218	6	#16	STR	5100	47	*G14	4	#13	STR	480	2
*A112	6	#16	STR	8740	81	A219	6	#16	STR	4500	42						
*A113	6	#16	STR	8140	76	A220	6	#16	STR	3880	36	K1	60	#13	STR	8040	480
*A114	6	#16	STR	7520	70	A221	6	#16	STR	3280	31						
*A115	6	#16	STR	6920	64	A222	6	#16	STR	2680	25	S2	160	#13	2	3580	569
*A116	6	#16	STR	6320	59	A223	6	#16	STR	2080	19	S3	16	#13	2	4960	79
*A117	6	#16	STR	5700	53	A224	6	#16	STR	1460	14	*S4	92	#13	3	2180	199
*A118	6	#16	STR	5100	47	A225	6	#16	STR	880	8	*S5	92	#16	4	2320	331
*A119	6	#16	STR	4500	42												
*A120	6	#16	STR	3880	36	*B1	245	#13	STR	7600	1851						
*A121	6	#16	STR	3280	31	B2	195	#16	STR	12280	3716	REINFORCING STEEL (kg)					10314
*A122	6	#16	STR	2680	25	B3	24	#13	STR	1140	27	*EPOXY COATED REINFORCING STEEL (kg)					8713
*A123	6	#16	STR	2080	19	*B4	72	#16	STR	1520	170						
*A124	6	#16	STR	1460	14												
*A125	6	#16	STR	880	8	*D1	136	#13	STR	200	27						
*A126	6	#19	STR	1350	18												
						*E1	8	#22	1	1100	27	CLASS AA CONCRETE (m3)					
A201	6	#16	STR	15400	143	*E2	8	#22	1	1260	31	POUR 1 (DECK)					124.7
A202	6	#16	STR	14800	138	*E3	8	#22	1	1420	35	POUR 2 (INTEGRAL END BENTS)					99.9
A203	6	#16	STR	14200	132	*E4	8	#22	1	1560	38	POUR 3 (SIDEWALK)					30.4
A204	6	#16	STR	13580	126	*E5	4	#22	1	1020	12	POUR 3 (END POSTS)					1.4
												TOTAL					256.4

BAR TYPES



ALL BAR DIMENSIONS ARE OUT TO OUT

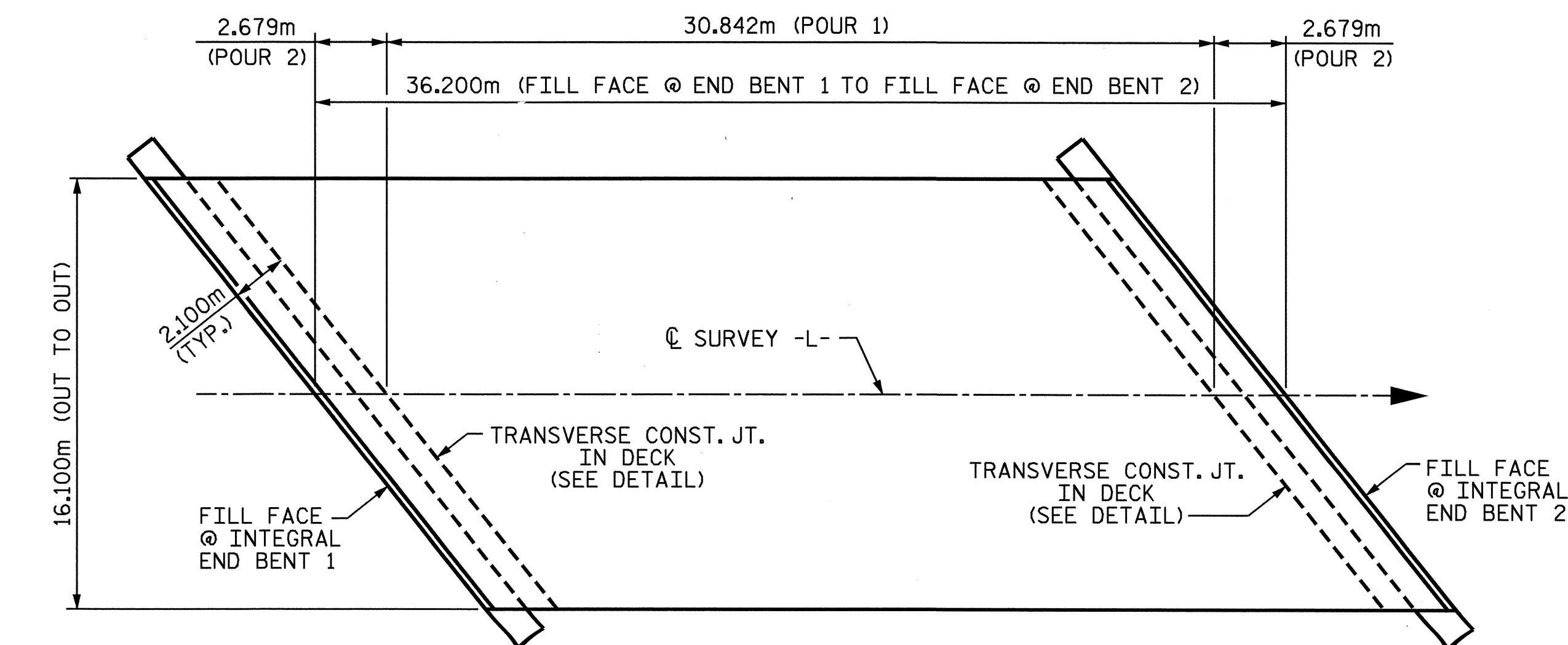
GROOVING BRIDGE FLOORS

APPROACH SLAB	205.2 SQ.METERS
BRIDGE DECK	392.6 SQ.METERS
TOTAL	597.8 SQ.METERS

TOTAL SUPERSTRUCTURE QUANTITIES

	DECK AREA (m ²)	GROOVING AREA (m ²)	CLASS AA CONCRETE (m ³)	REINFORCING STEEL (kg)	EPOXY COATED REINFORCING STEEL (kg)
** TOTALS	582.8	597.8	256.4	10314	8713

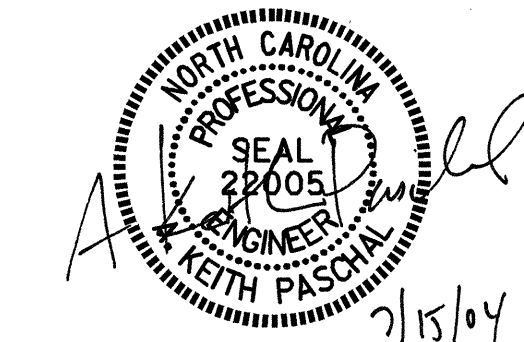
** QUANTITIES FOR SIDEWALK & END POST ARE INCLUDED.



LAYOUT FOR COMPUTING AREA OF REINFORCED CONCRETE DECK SLAB & POURING SEQUENCE (SQ. METERS = 582.8)

PROJECT NO. B-3256
WAKE COUNTY
STATION: 12+92.508 -L-

STATE OF NORTH CAROLINA
DEPARTMENT OF TRANSPORTATION
RALEIGH
SUPERSTRUCTURE
BILL OF MATERIAL



DRAWN BY: G.M.P. / K.M.M. DATE: 5/20/02
CHECKED BY: F.B. POOLE DATE: 12/10/03

15-JUL-2004 09:28
W:\sq\adp\b3256\kmccauley\B3256.sd.BM.01.dgn
kmccauley

REVISIONS				SHEET NO.
NO.	BY:	DATE:	NO.	DATE:
1			3	
2			4	

TOTAL SHEETS 27