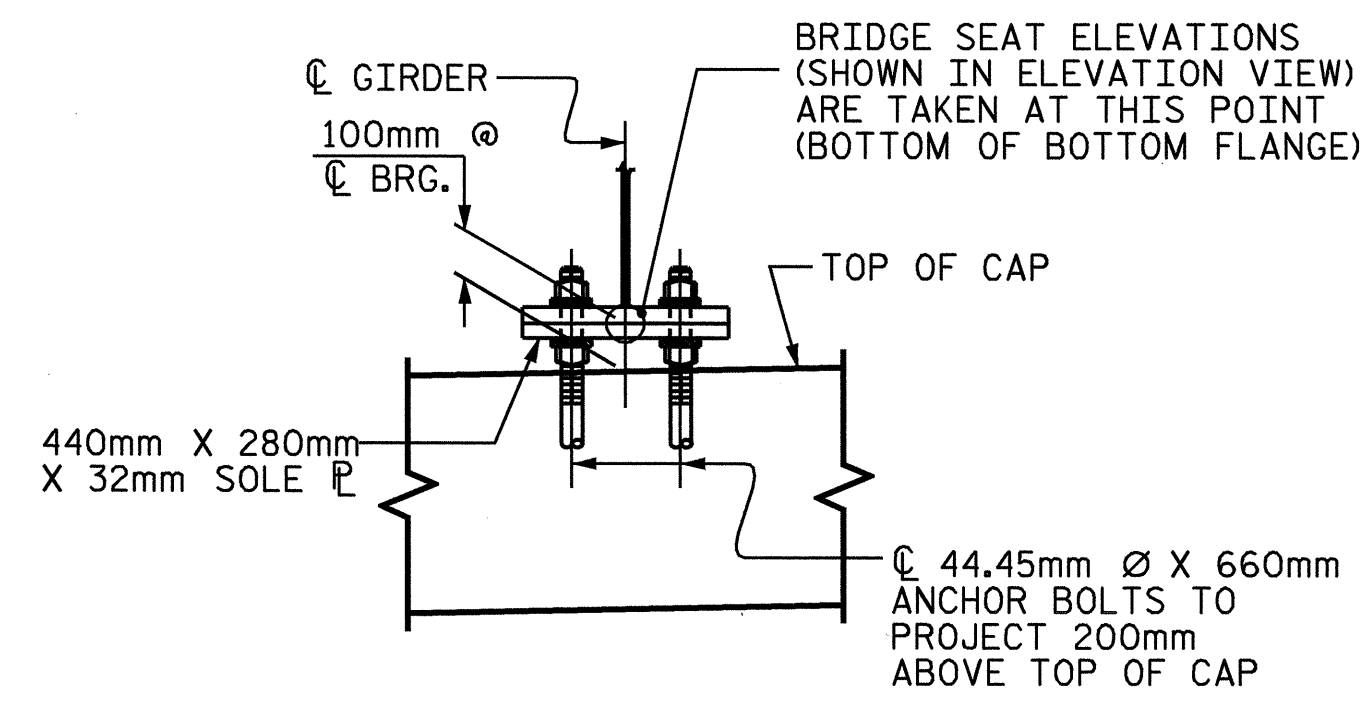


SECTION A-A

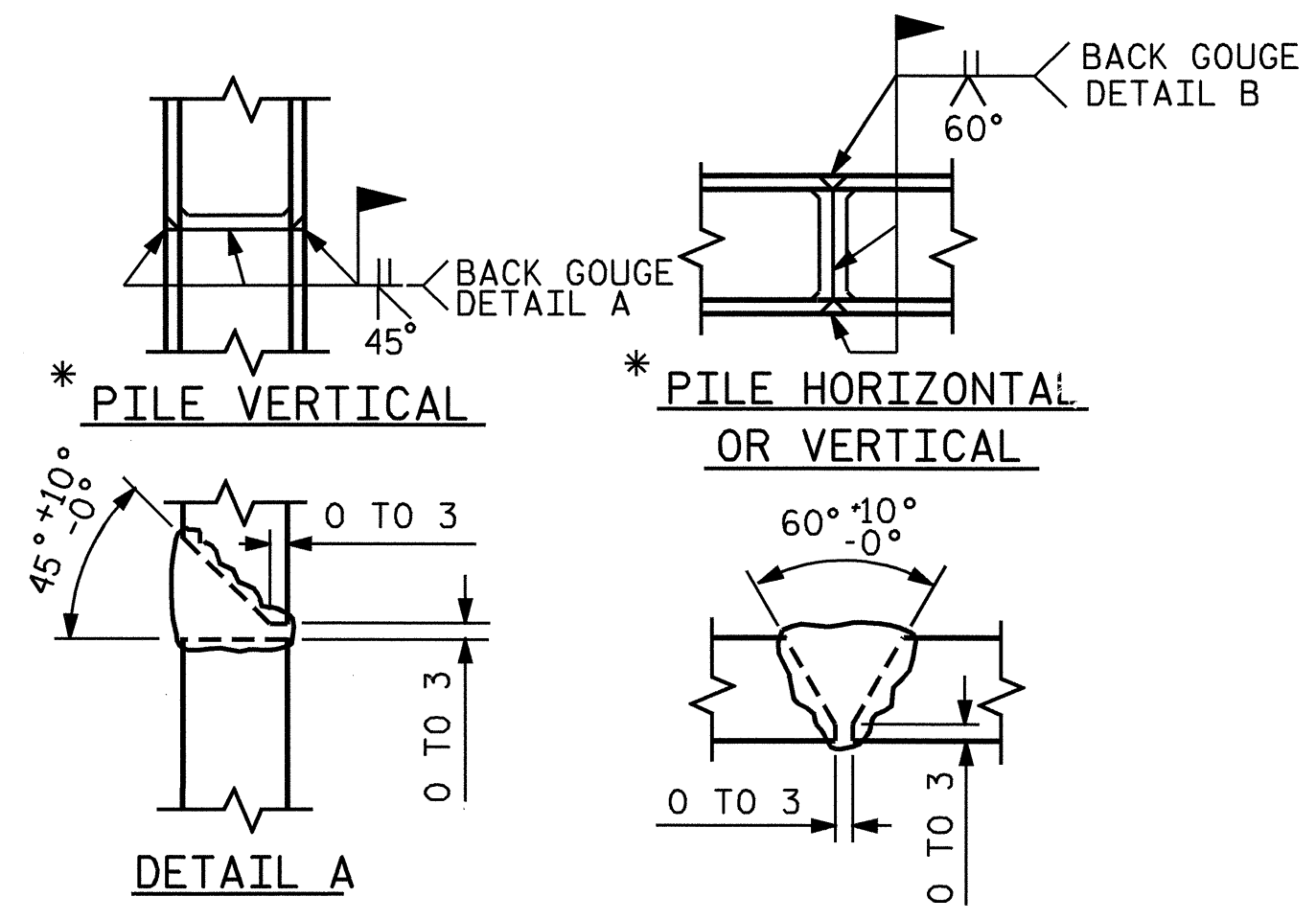


DETAIL A

BAR TYPES					
HK.	①	12965	B1	140	1100
	②	13400	B2	140	1100
	③	380mm LAP			
	④				
	⑤				
	⑥				
	⑦				

BILL OF MATERIAL					
INTEGRAL END BENT 2					
BAR	NO.	SIZE	TYPE	LENGTH	WEIGHT
B1	8	36	1	13440	850
B2	10	32	1	13600	871
B3	4	16	STR	11960	74
B4	5	16	STR	4460	35
B5	5	16	STR	13000	101
B6	5	16	STR	5220	41
H1	4	16	6	3940	24
H2	4	16	6	3780	23
H3	8	16	STR	2160	27
H4	8	16	STR	2000	25
H5	3	16	7	4620	22
H6	3	16	7	4780	22
H7	7	16	STR	3000	33
H8	7	16	STR	2840	31
S1	72	16	2	4260	476
S2	32	16	4	1380	69
S3	32	16	5	2700	134
S4	56	13	3	2000	111
S5	4	16	2	4780	30
U1	47	13	2	2000	93
V1	16	16	STR	2700	67
V2	22	16	STR	2620	90
REINFORCING STEEL					3249 kg
CLASS A CONCRETE					
POUR #1 (CAP & LOWER WING)					27.4m ³
POUR #2 (UPPER WING)					3.1m ³
TOTAL					30.5m ³
HP 310 X 79 STEEL PILES					
NO. 14					224.0m

ALL BAR DIMENSIONS ARE OUT TO OUT.



PILE SPLICE DETAILS

PROJECT NO. B-3256
WAKE COUNTY
 STATION: 12+92.508 -L-

SHEET 3 OF 3

STATE OF NORTH CAROLINA
 DEPARTMENT OF TRANSPORTATION
 RALEIGH

SUBSTRUCTURE
 INTEGRAL END BENT 2

REVISIONS						SHEET NO.
NO.	BY:	DATE:	NO.	BY:	DATE:	S-23
1			3			TOTAL SHEETS
2			4			26

